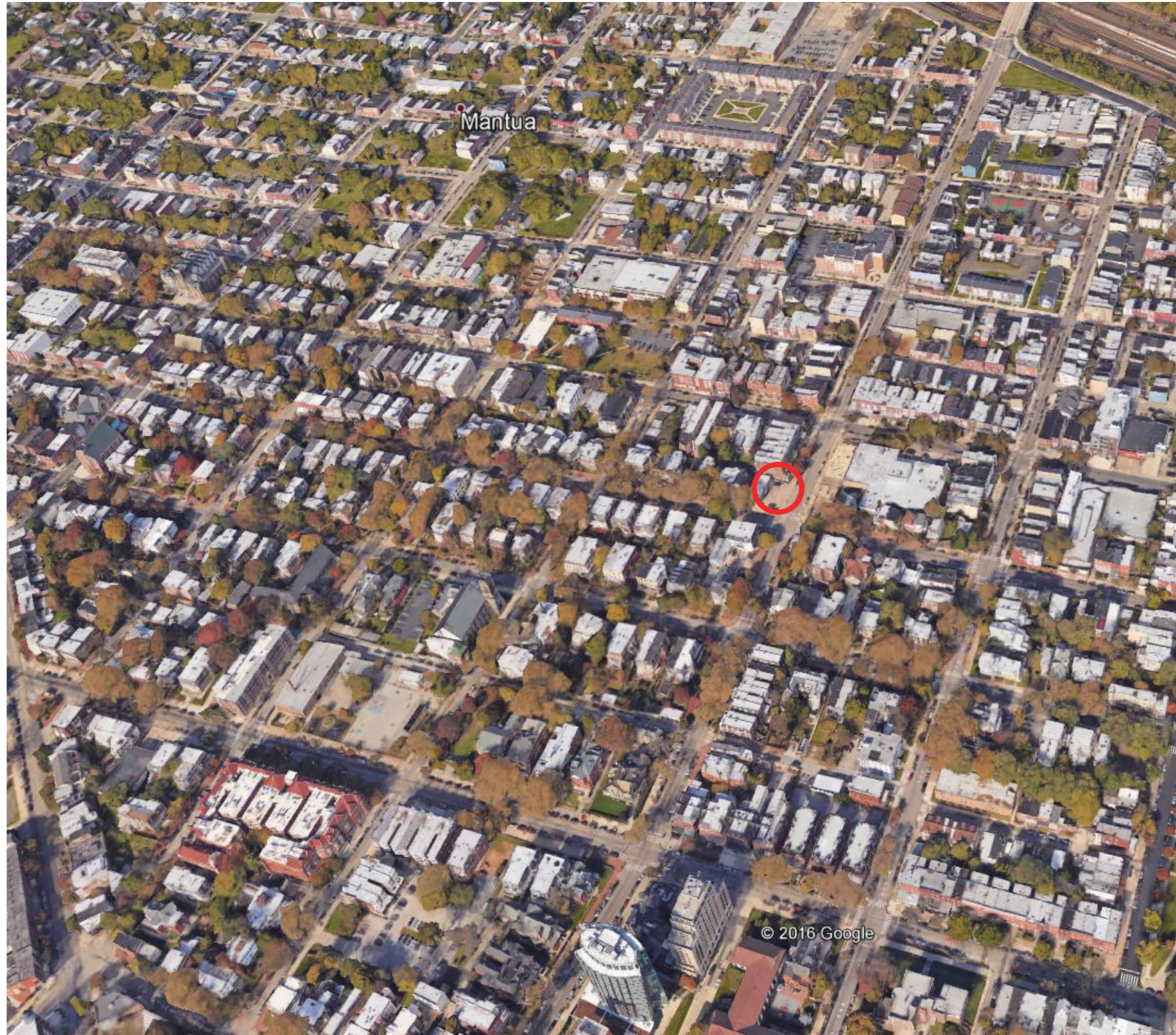




Team Chill:

KIMEYS PLACE

Lauren Gillaspey
Agnes Gummere
Robert Heister
Kai Johnson
Ann Marie Riccio



The design for the re-invigoration of an existing corner market, Kimey's Place, located at 3401 Hamilton St., focuses on creating a beacon for the communities of Mantua and Powelton through color and light. The design addresses the five key principles of Mantua -- Safety, Health, Education, Jobs and Beautification -- by creating different zones in which the community can interact with the newly designed site. The designs for the site include maintaining the existing bodega, creating a walk-up food window, adding additional seating and social spaces and incorporating small-scale farming beds on the new rooftop terrace to help bring more community awareness and involvement to the existing food desert within the neighborhood.

After visiting the site, Team Chill quickly identified the importance of incorporating light and color within the project to act as a beacon, or lantern, for the communities. From sketches and collaborative brainstorming, we produced the idea of growing the lantern from the community, having it culminate at our site, and then leading back into the community as a way to fully integrate the design for the site with the surrounding areas

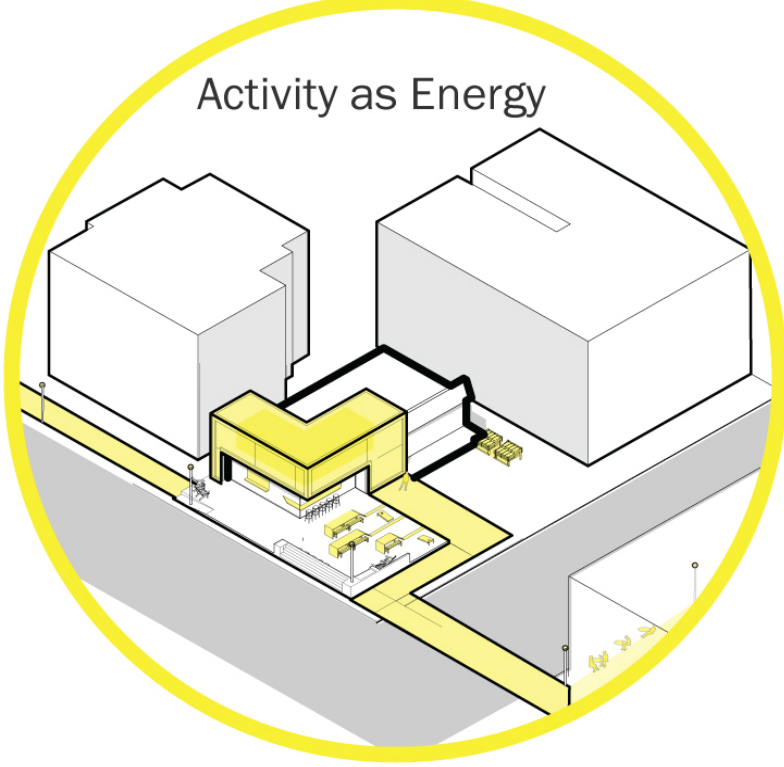
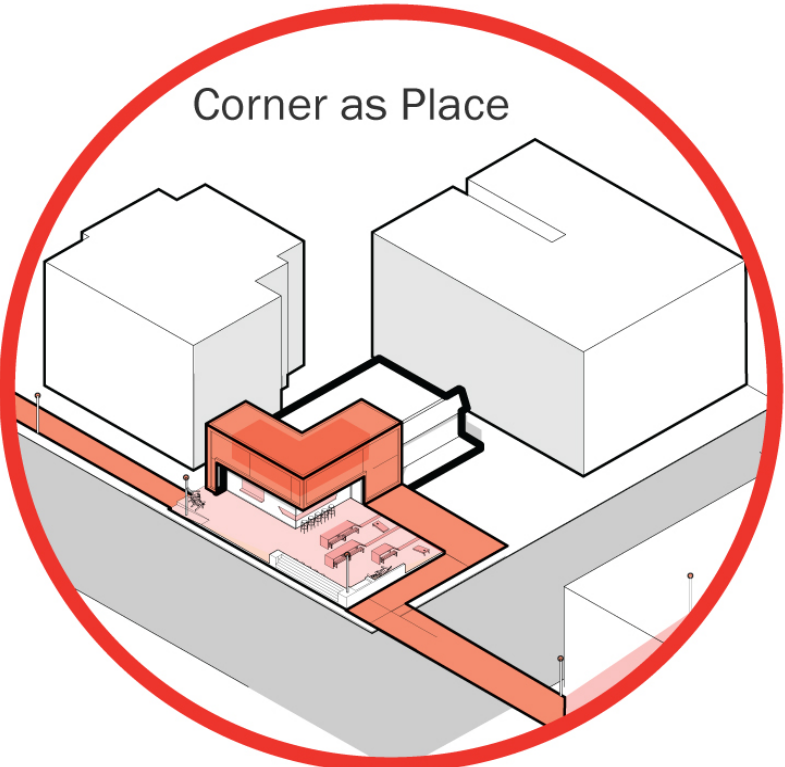
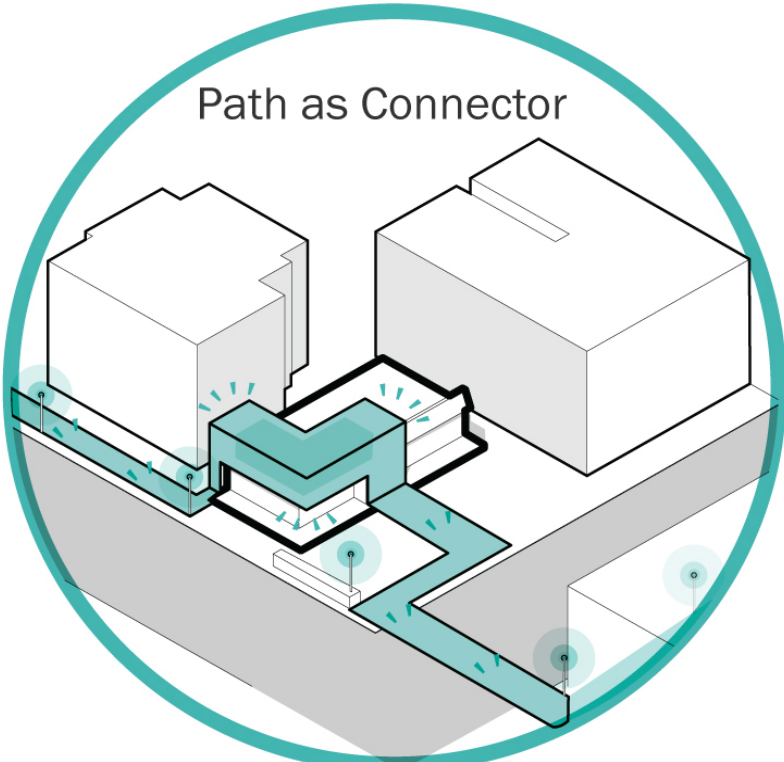
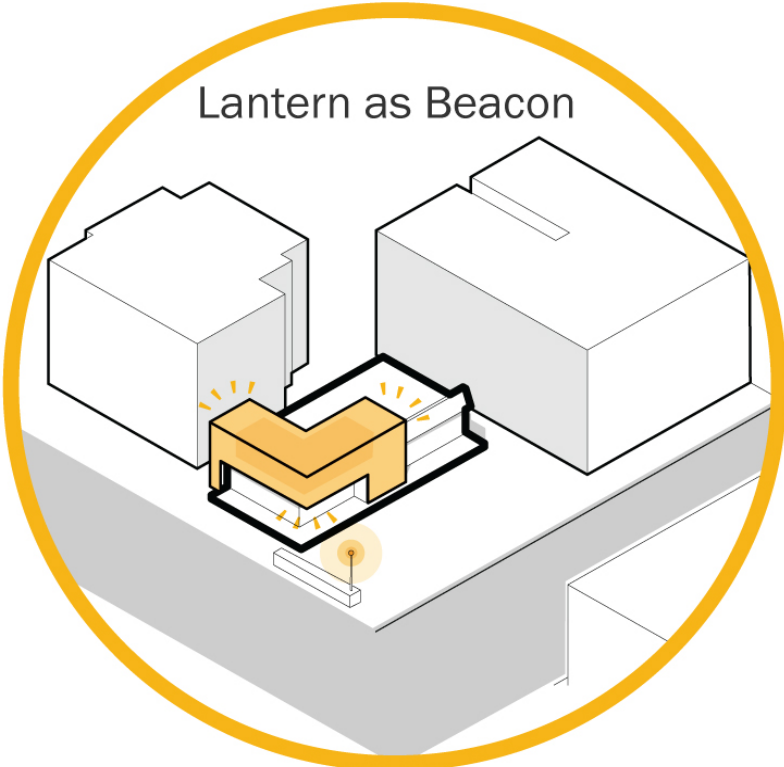
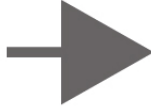
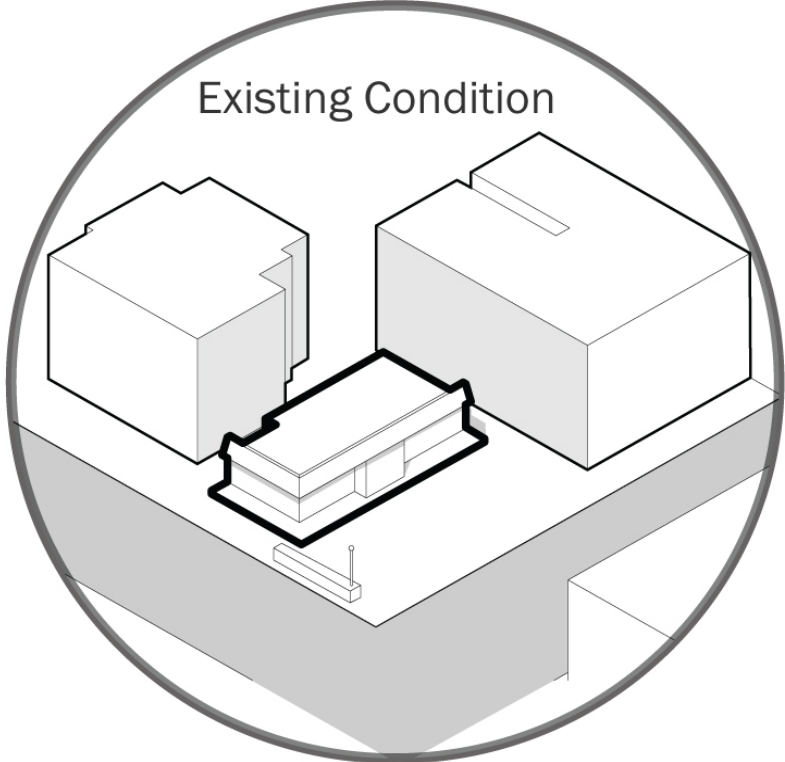
light



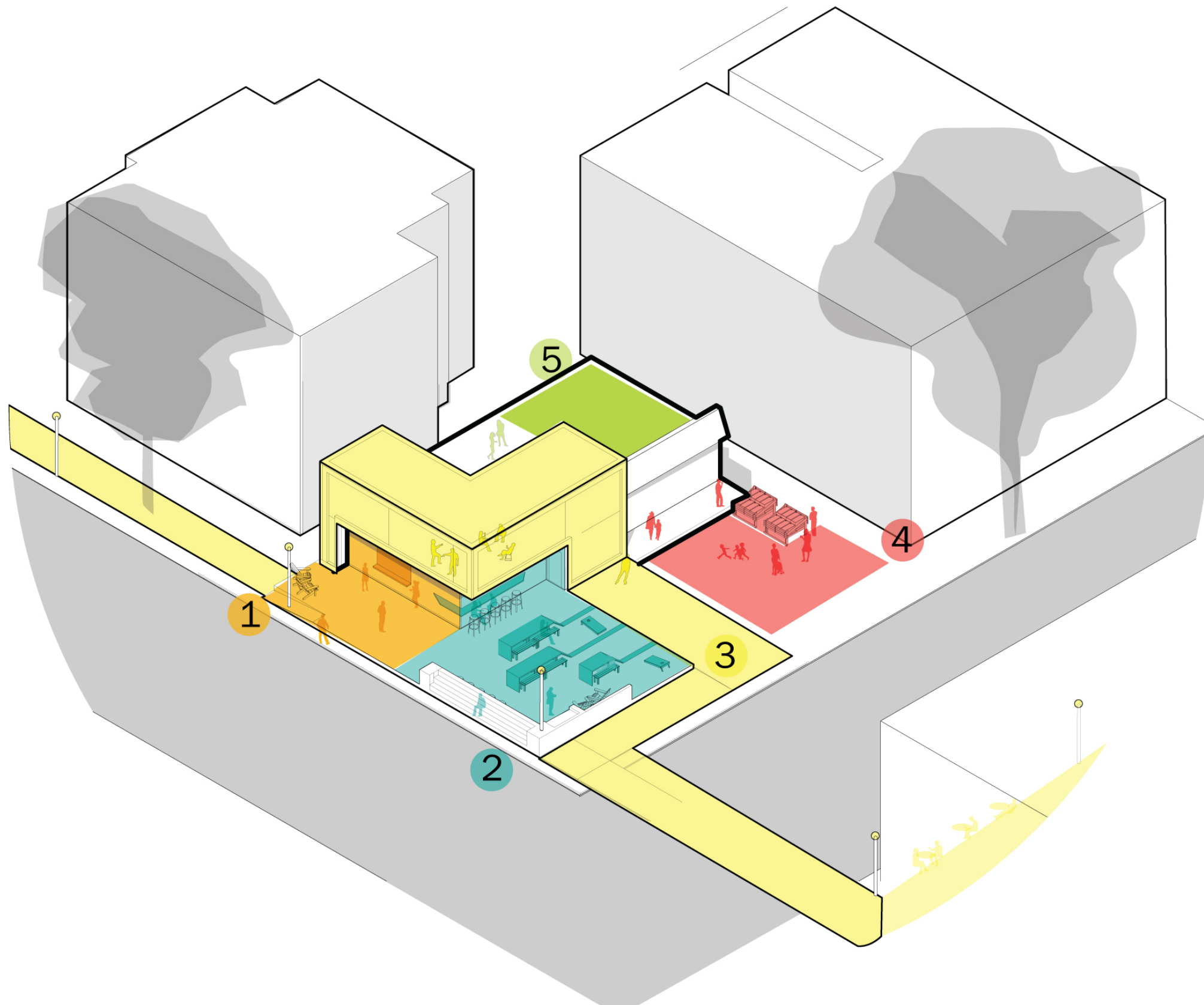
color



design of environment



program of place



- 1 THE KITCHEN**
health
taste
- 2 THE PORCH**
safety
sound
- 3 THE LANTERN**
beautification
sight
- 4 THE MARKET**
employment
touch
- 5 THE GARDEN**
education
smell



4 THE MORTON MCMICHAEL SCHOOL



5 THE MANTUA GREENWAY



2 THE DORNSIFE CENTER



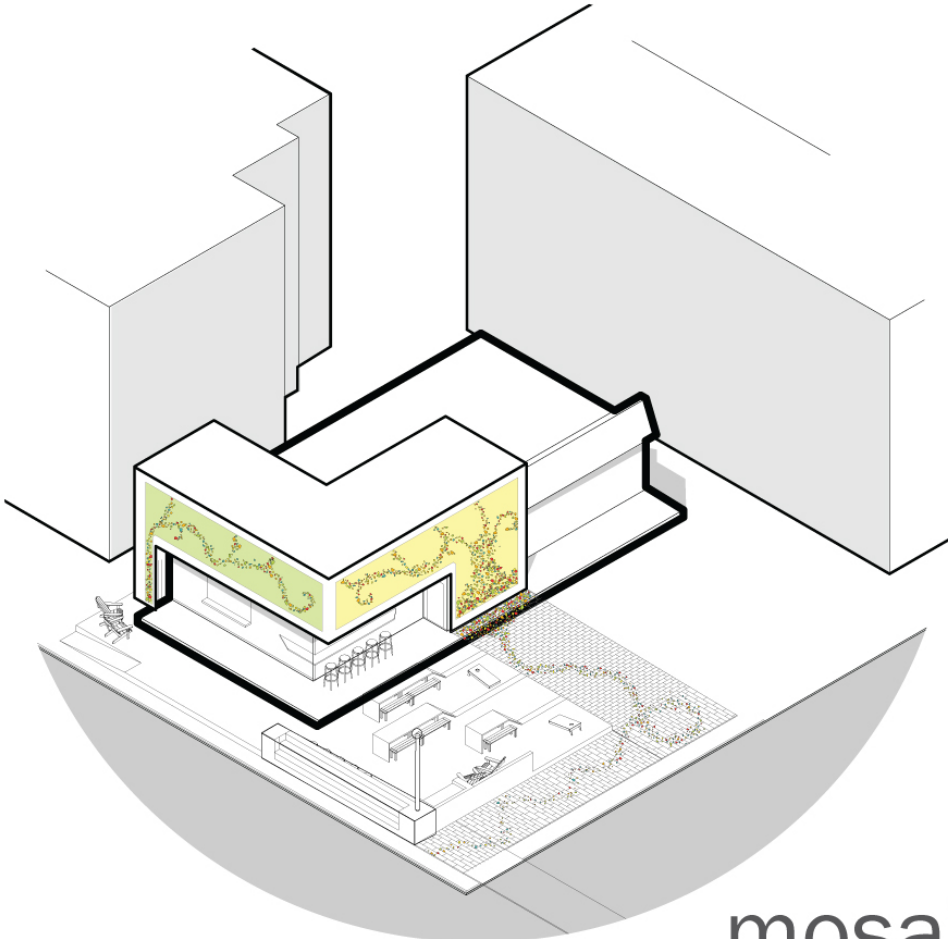
1 KIMEY'S PLACE



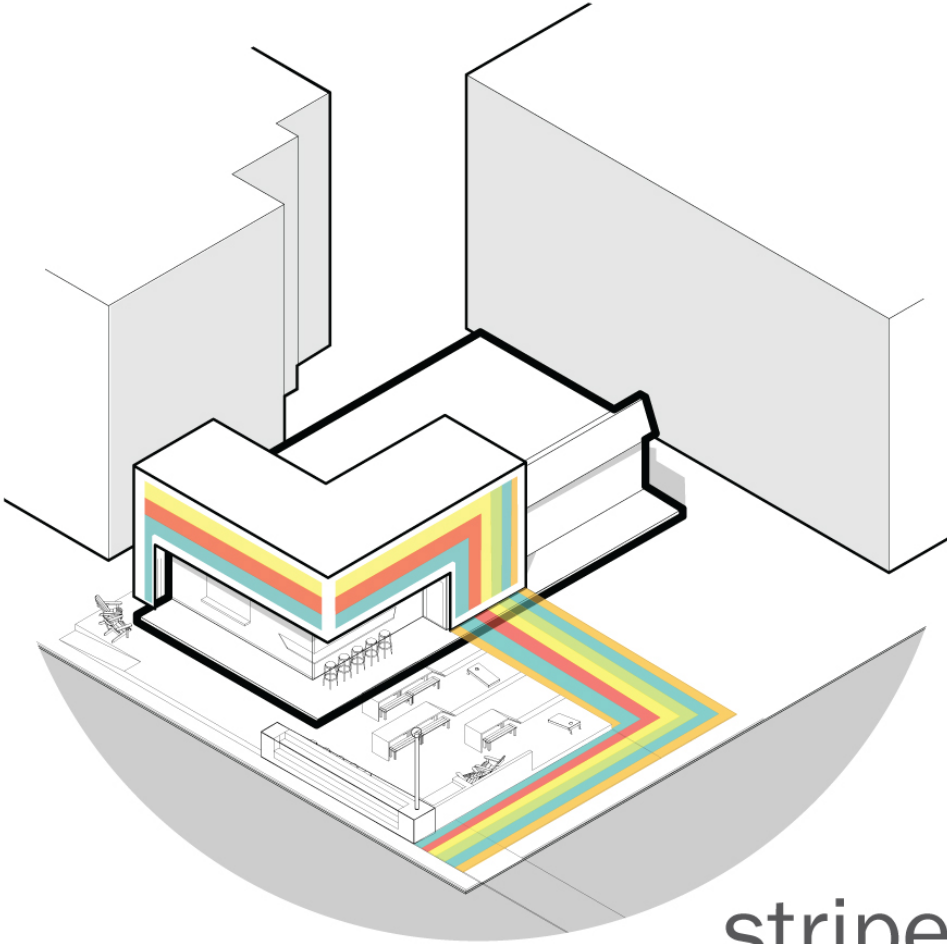
3 DURHAM FREE LIBRARY



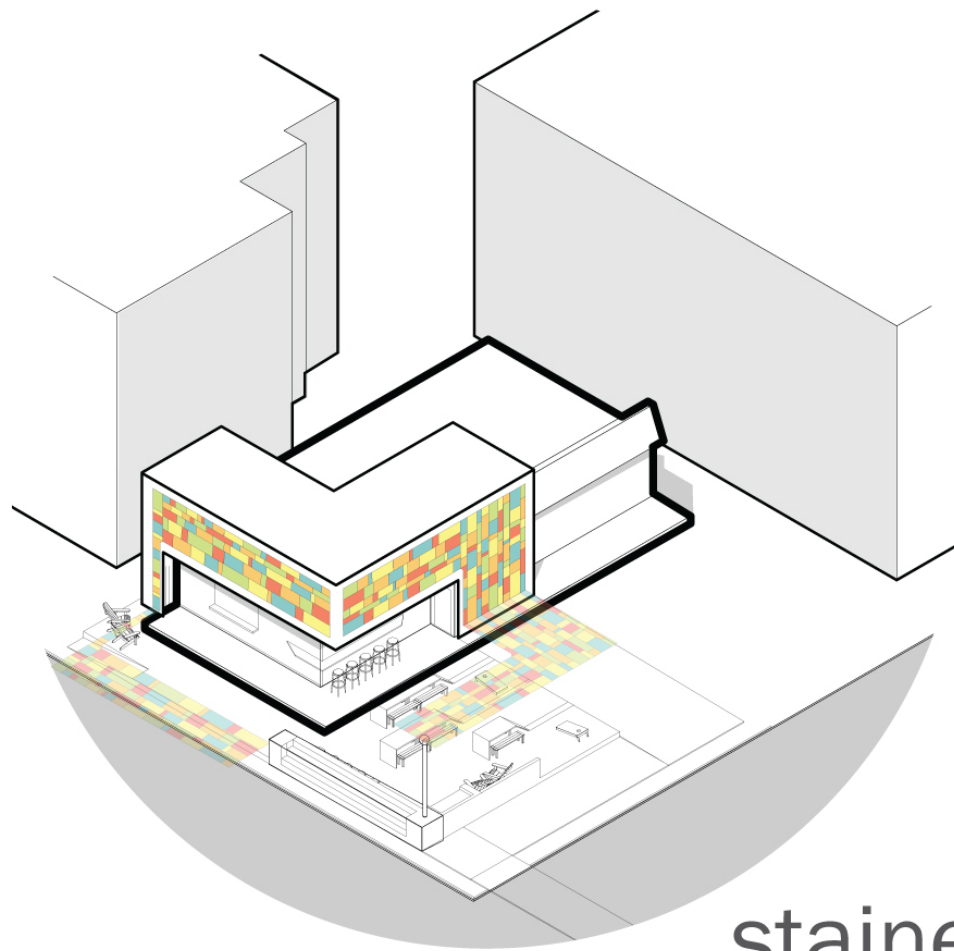
lantern options



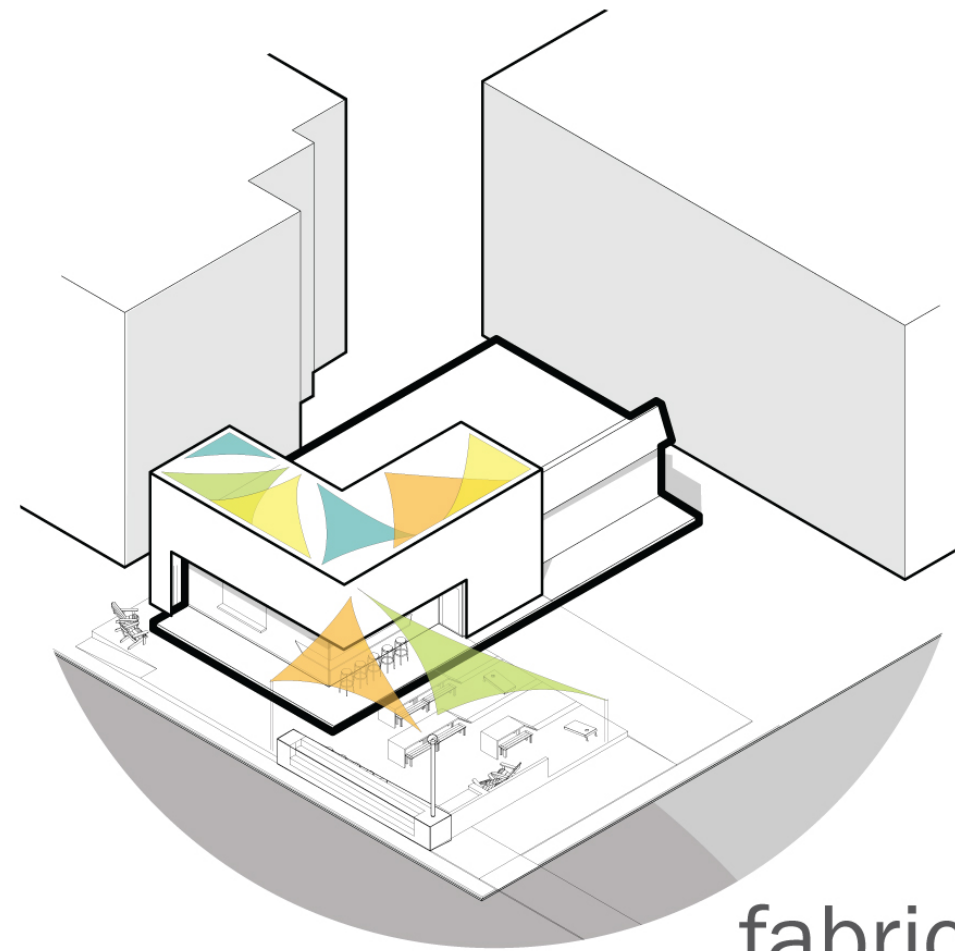
mosaic



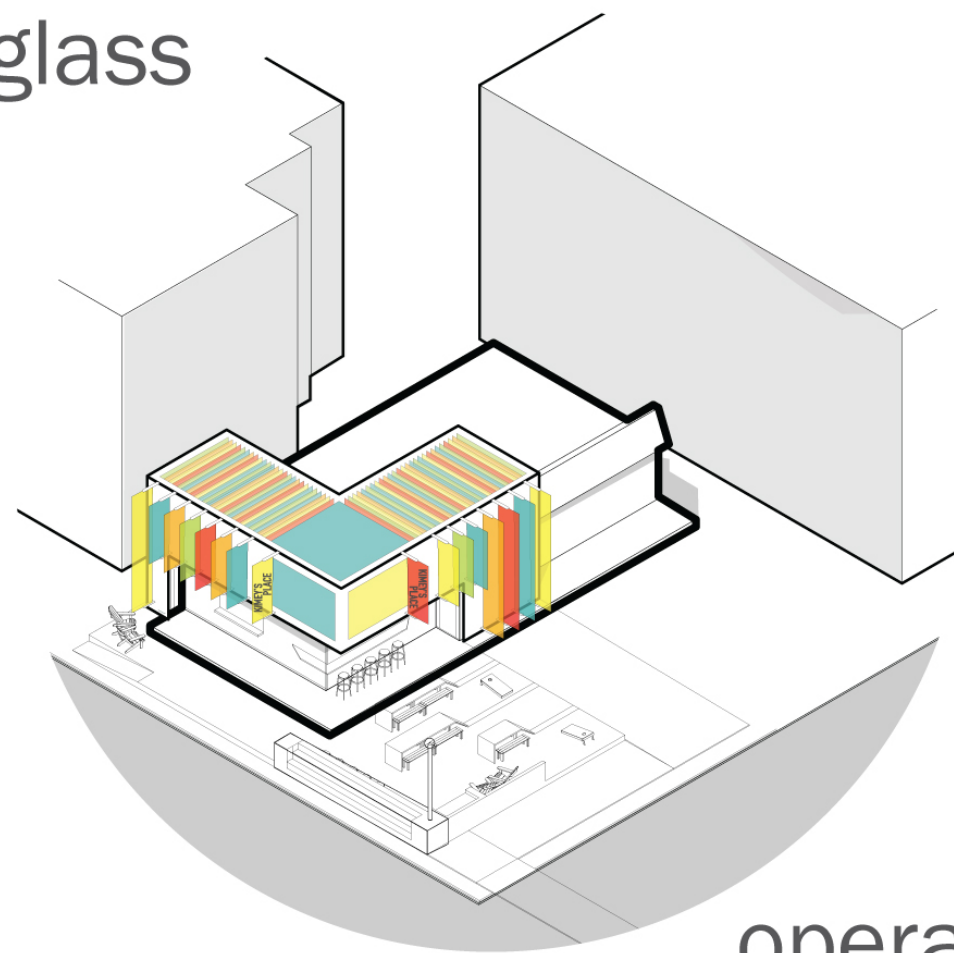
stripes



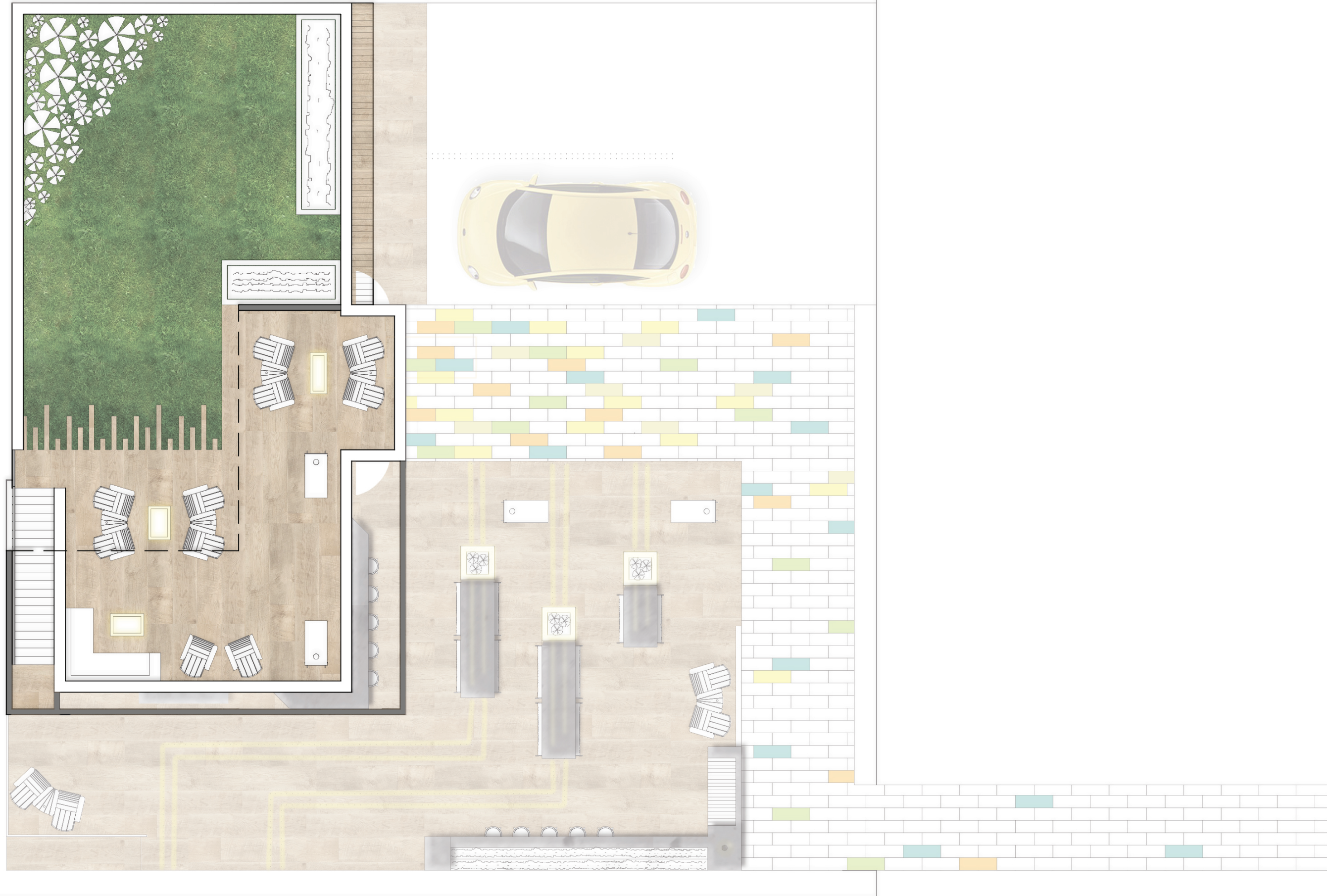
stained glass

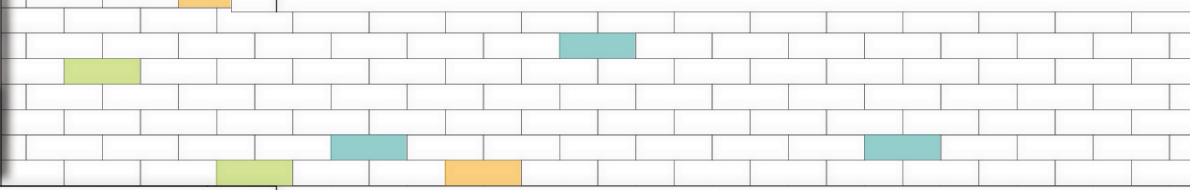
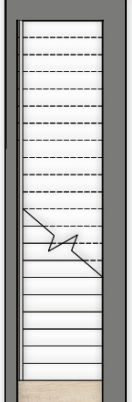
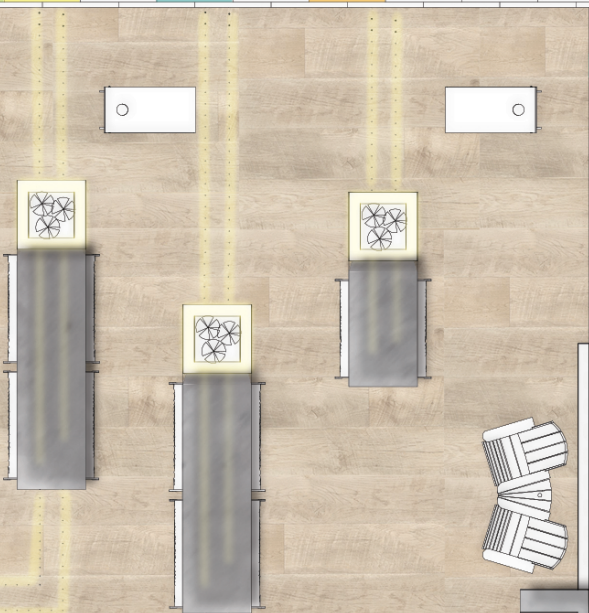
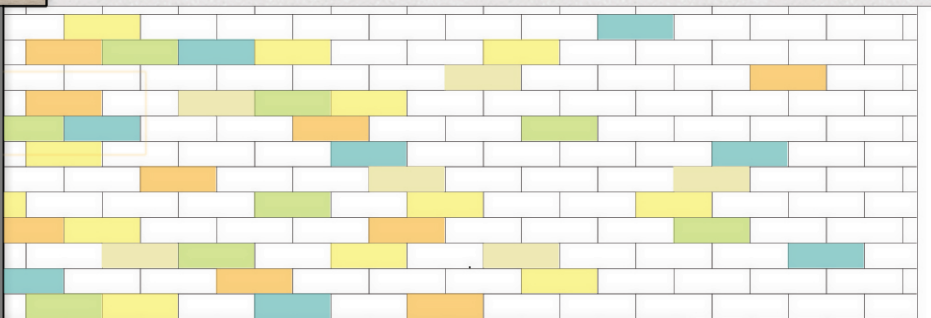
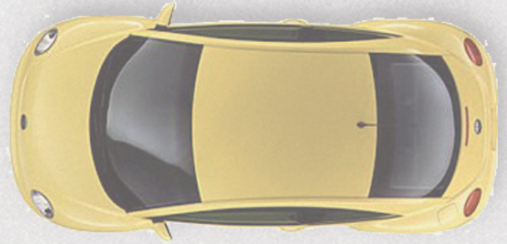
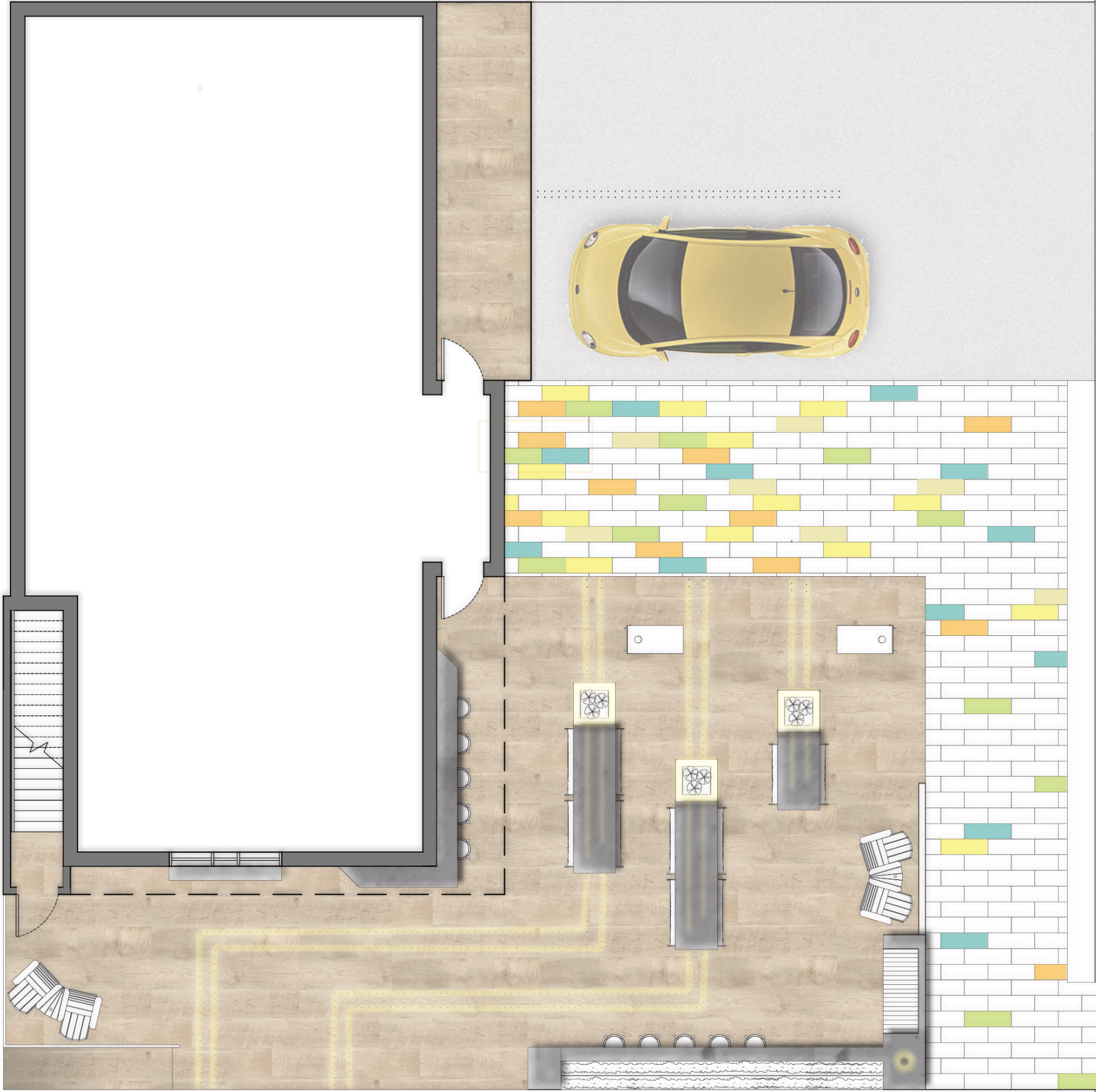
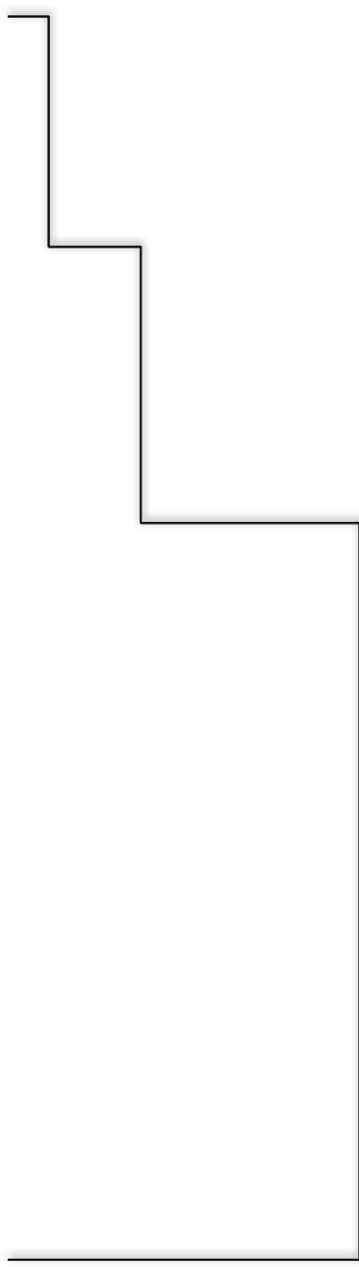


fabric canopies



operable banners





nature as palette

