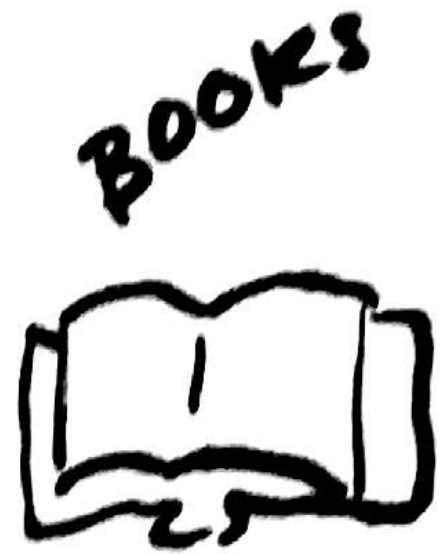
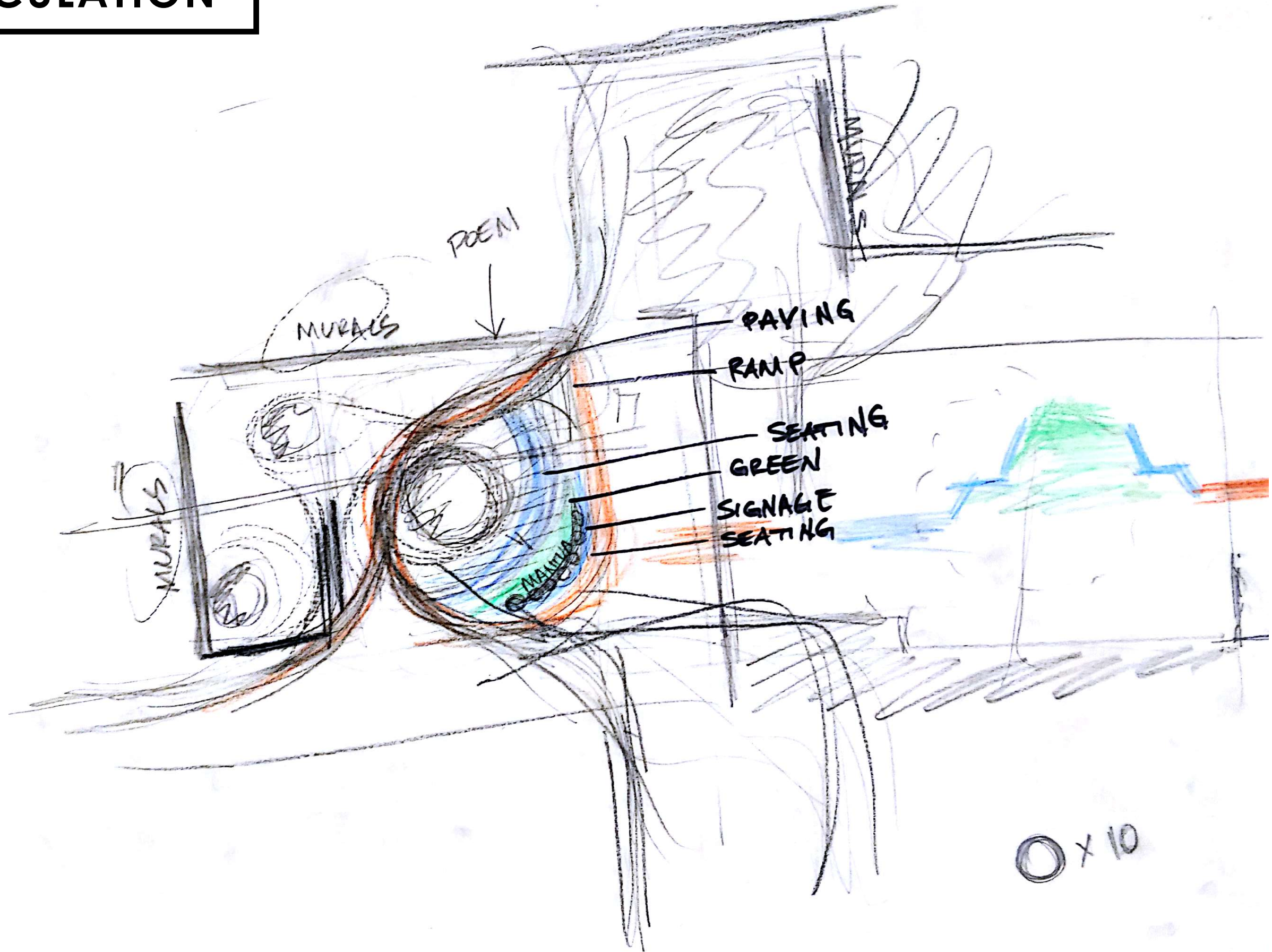


ACTIVITIES

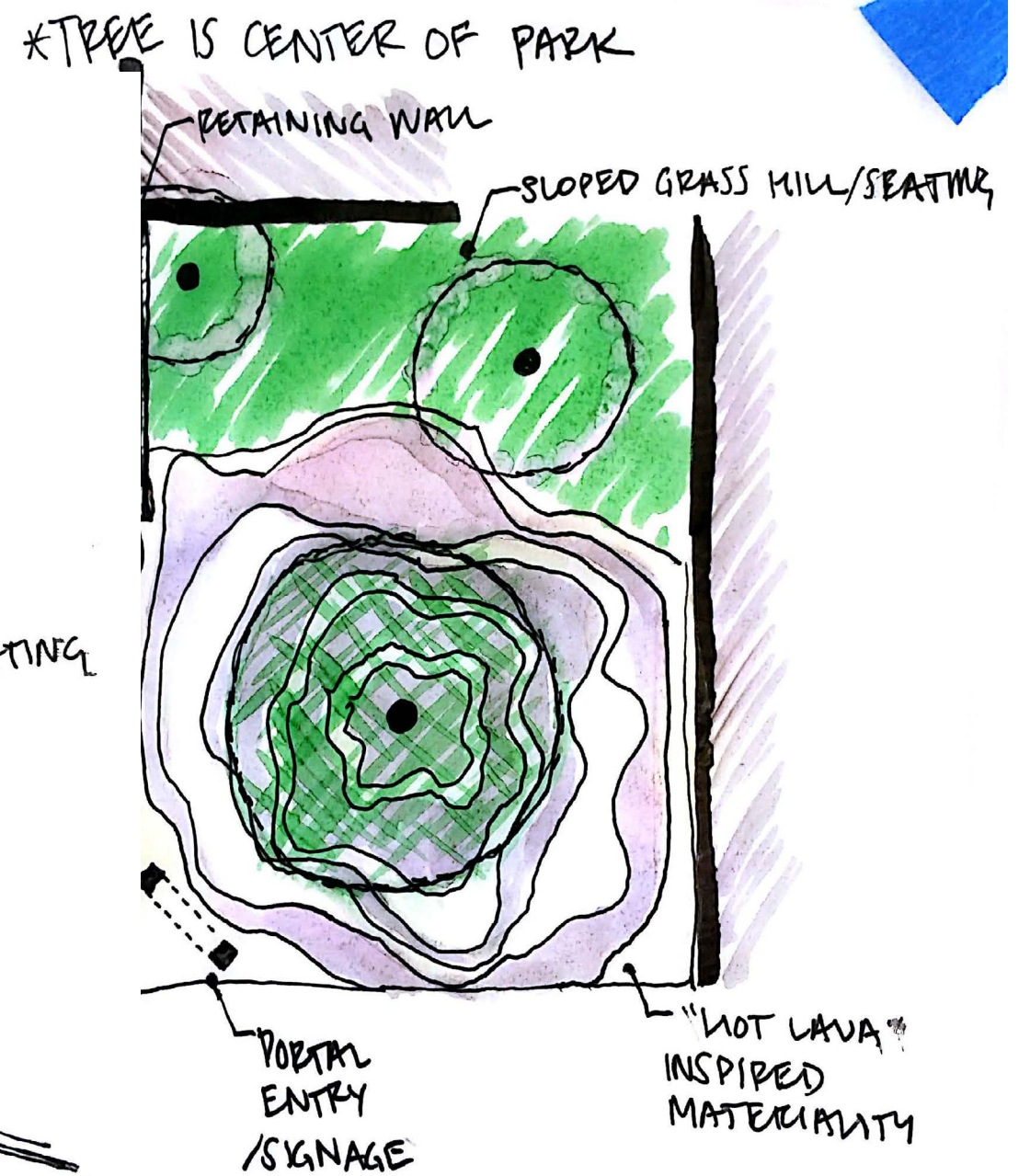
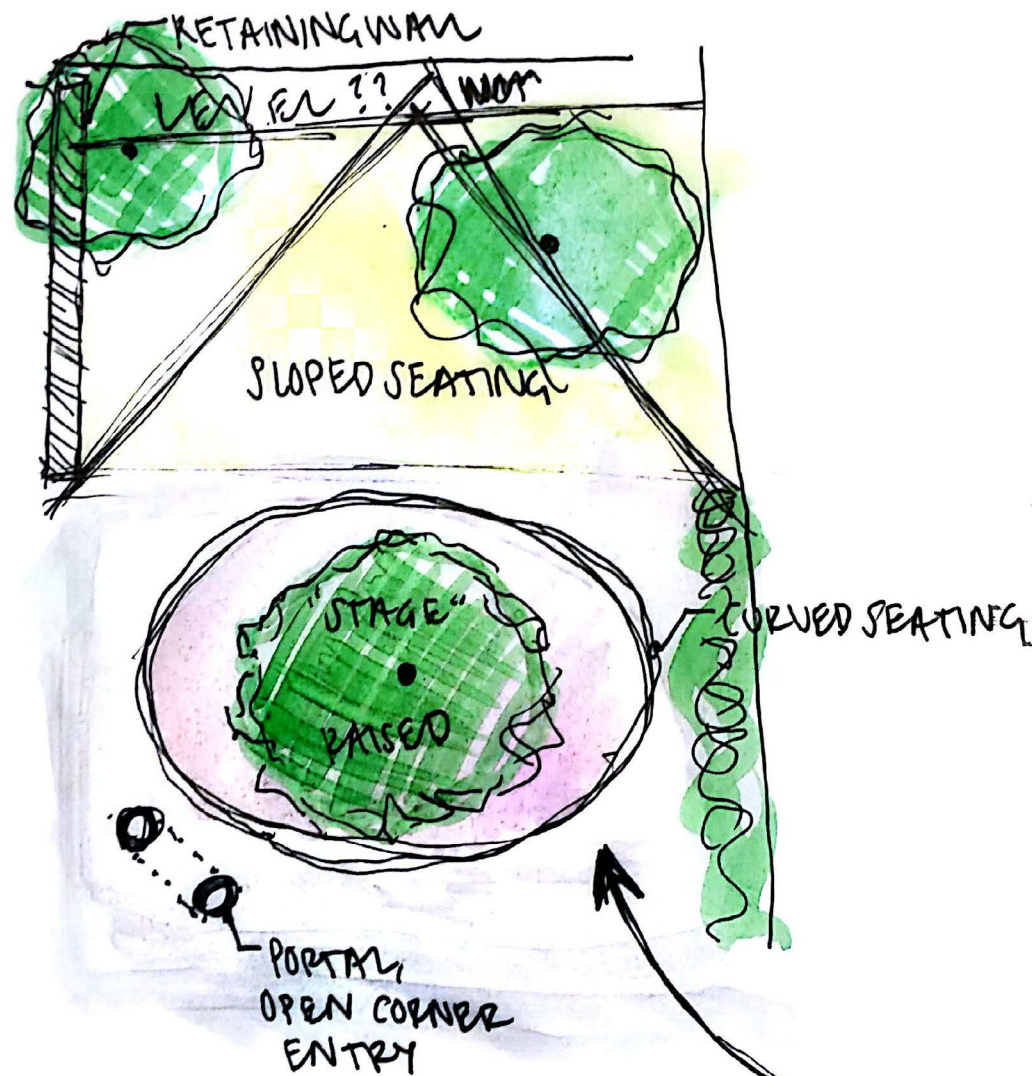


CIRCULATION



○ x 10

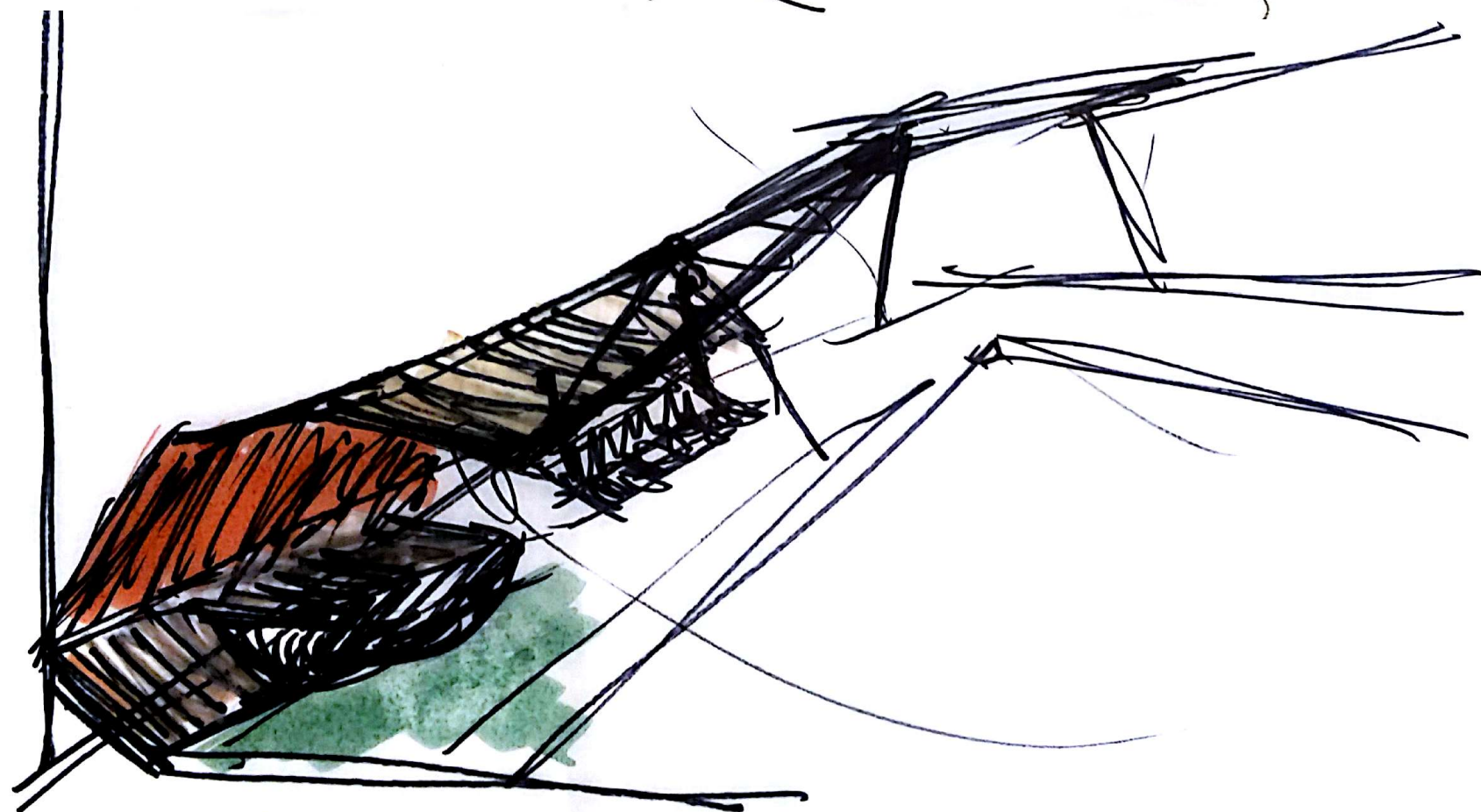
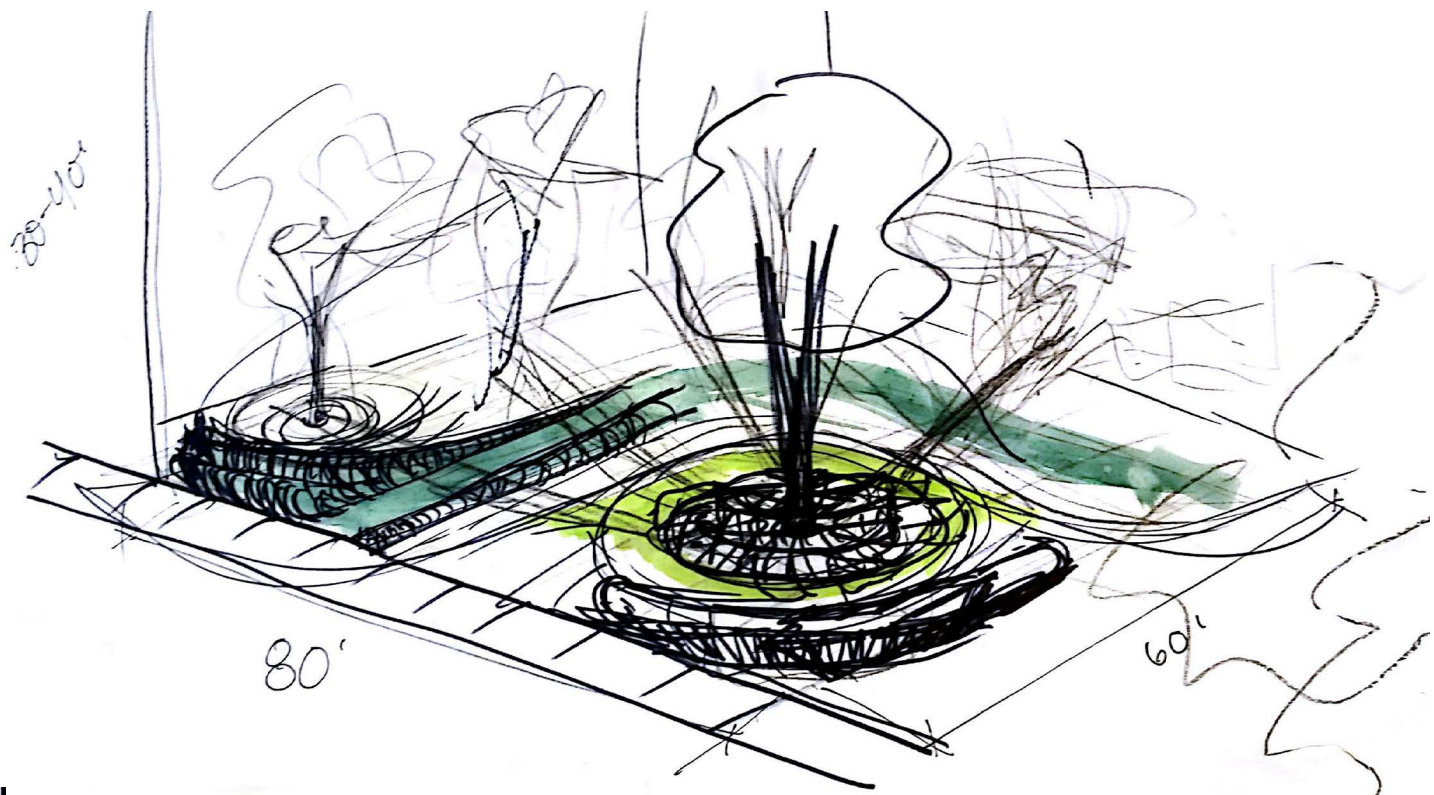
TREE STAGE



SPIRIT



LAYOUT



DETAILS

ELECTRIC
OUTLETS

WHEELCHAIR
ACCESSABILITY

Well executed
trash bins



Firm
seating

SLIDES
PLANTERS
SANDBOX

GLASS
WOOD/COPPER

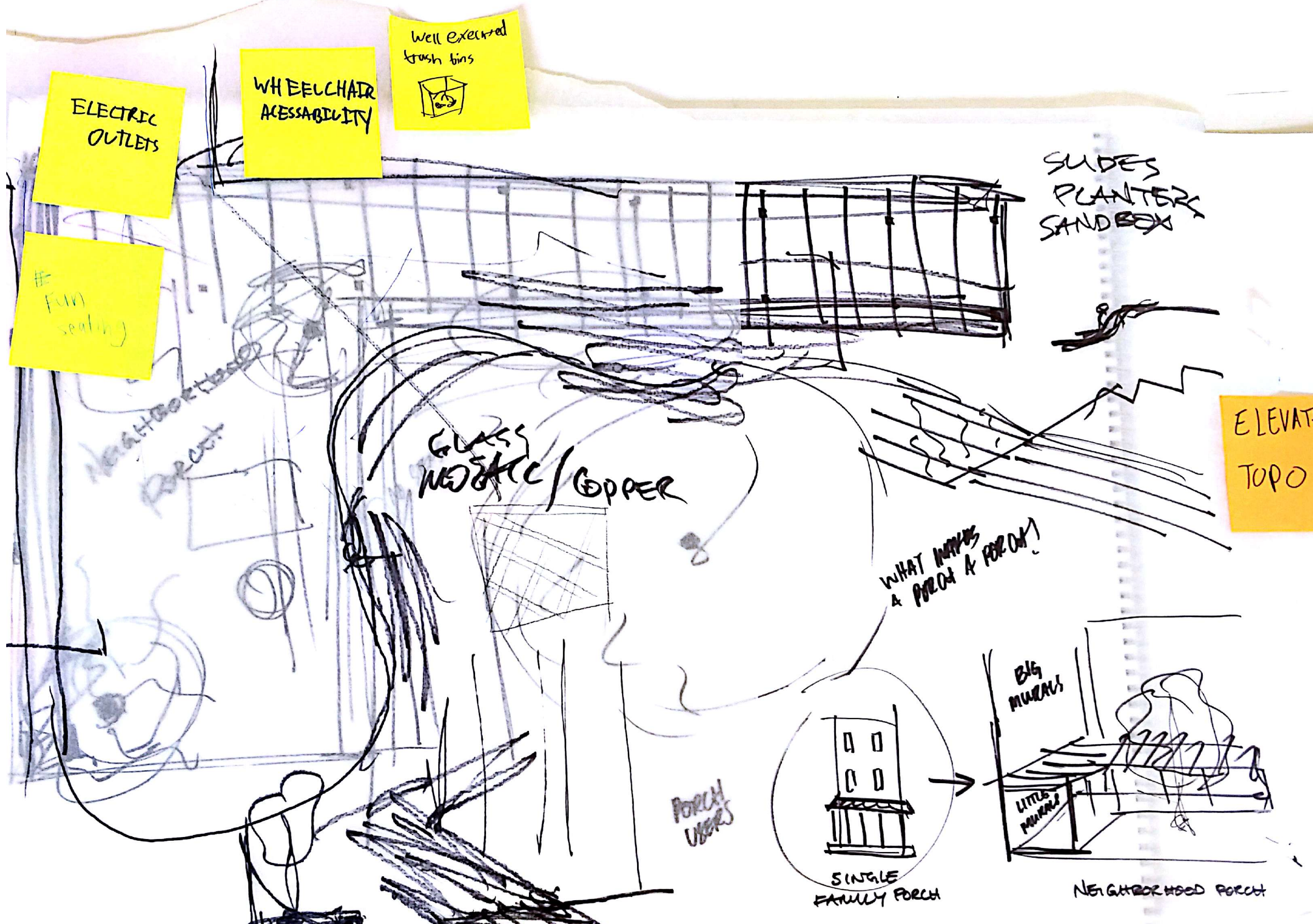
ELEVATE
TOPO

WHAT MAKES
A PORCH A PORCH?

PORCH
USERS

SINGLE
FAMILY PORCH

NEIGHBORHOOD PORCH



CONTEXT



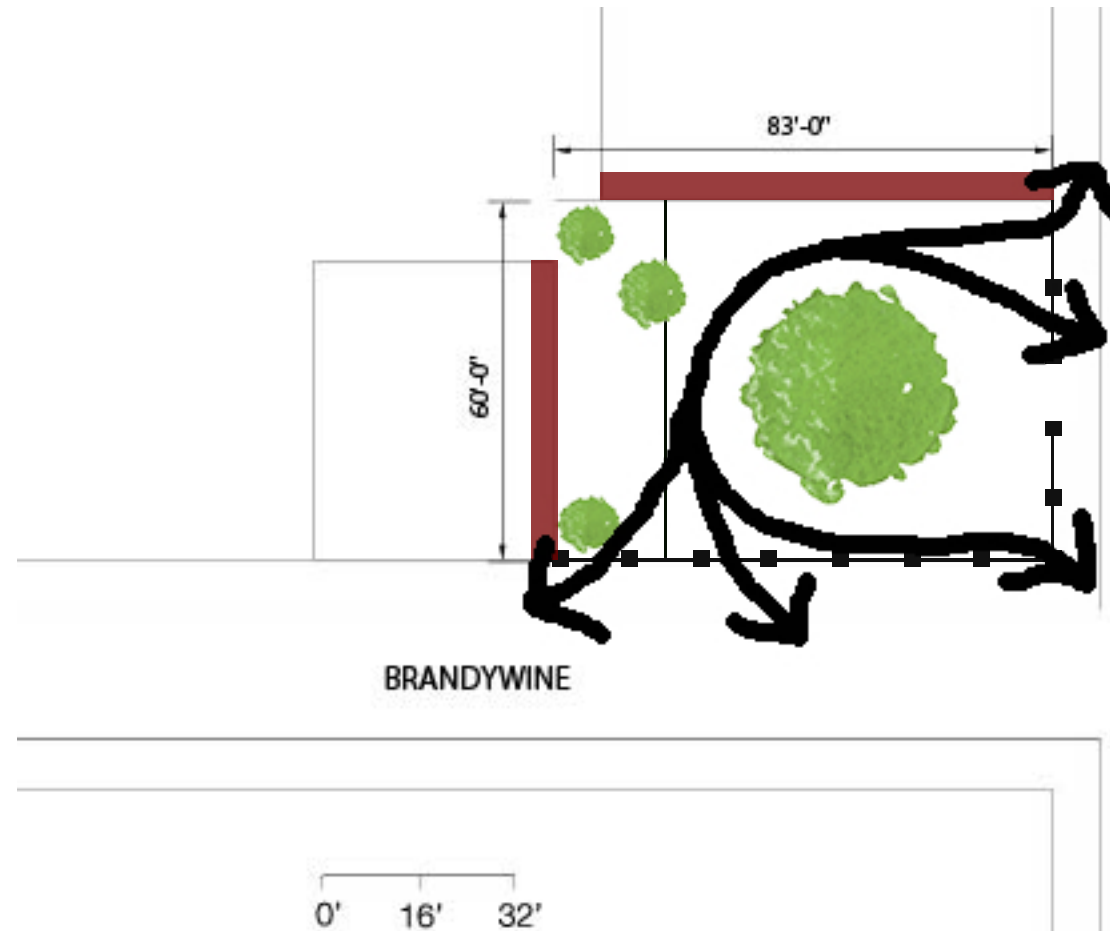
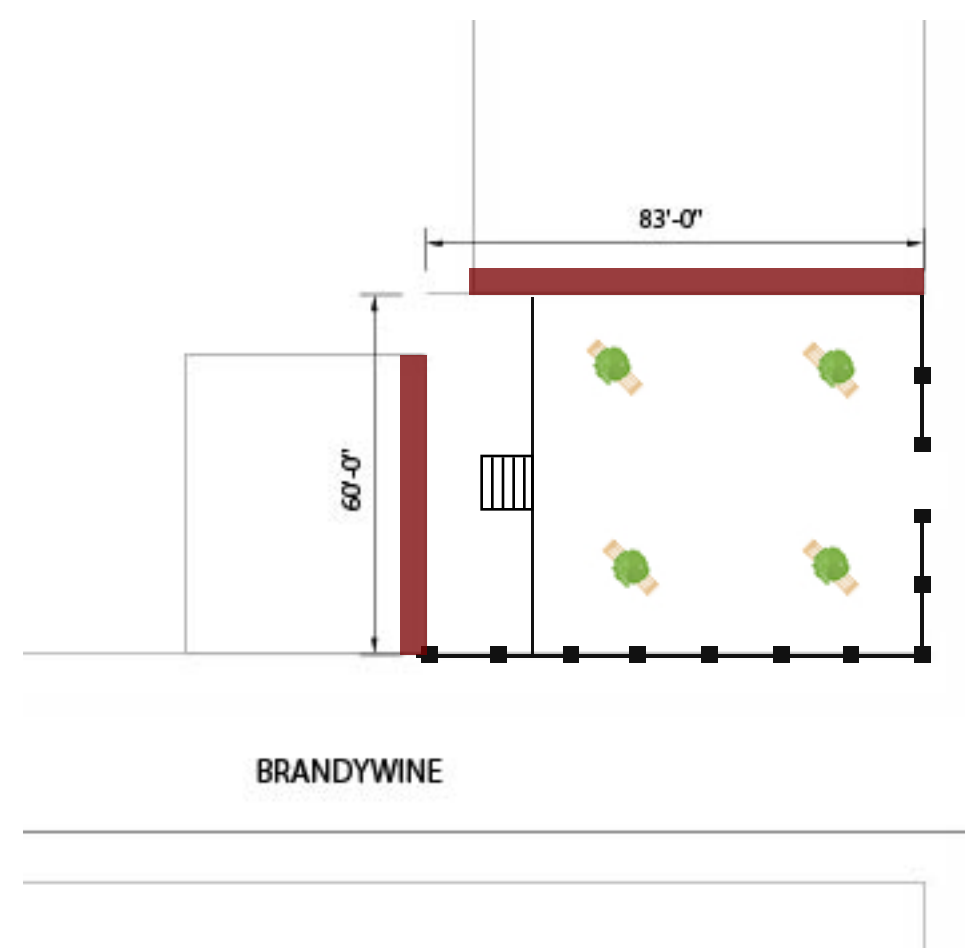
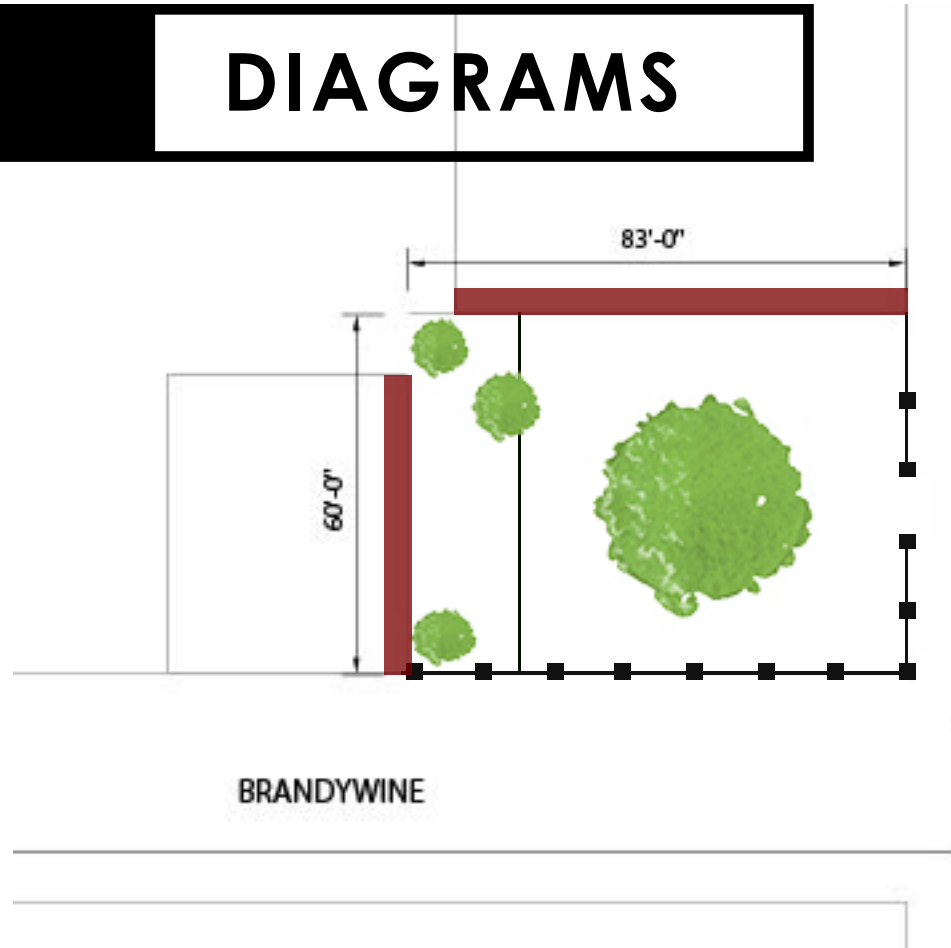
N-S SECTION



E-W SECTION



DIAGRAMS



0' 16' 32'

What if you had a porch and everyone came?

MAIN IDEA

→ Our team's Brandywine Park intervention aims to make a bold statement about the permanence of the existing fabric of the Mantua neighborhood. The spirit of Mantua is represented the existing trees on the site and how the roots of the neighborhood aren't going anywhere; no matter what is physically changing and developing around the park, the spirit and culture of the community will remain.

POTENTIAL NEIGHBORHOOD IMPACT

→ The goal is to create a sense of community and by providing amenities for neighborhood residents of all ages. The neighborhood porch is meant to be a location for sharing stories, relaxing, or enjoying a cookout.

DESIGN PROCESS

→ We looked for anchors in space to reference our design from, complete a circulation study, and leveraged the existing elevation to create active and passive levels within the space. The flexibility afforded by this bi-level design allows for varied programming and accessibility for the elderly residents one block down and the neighboring library.