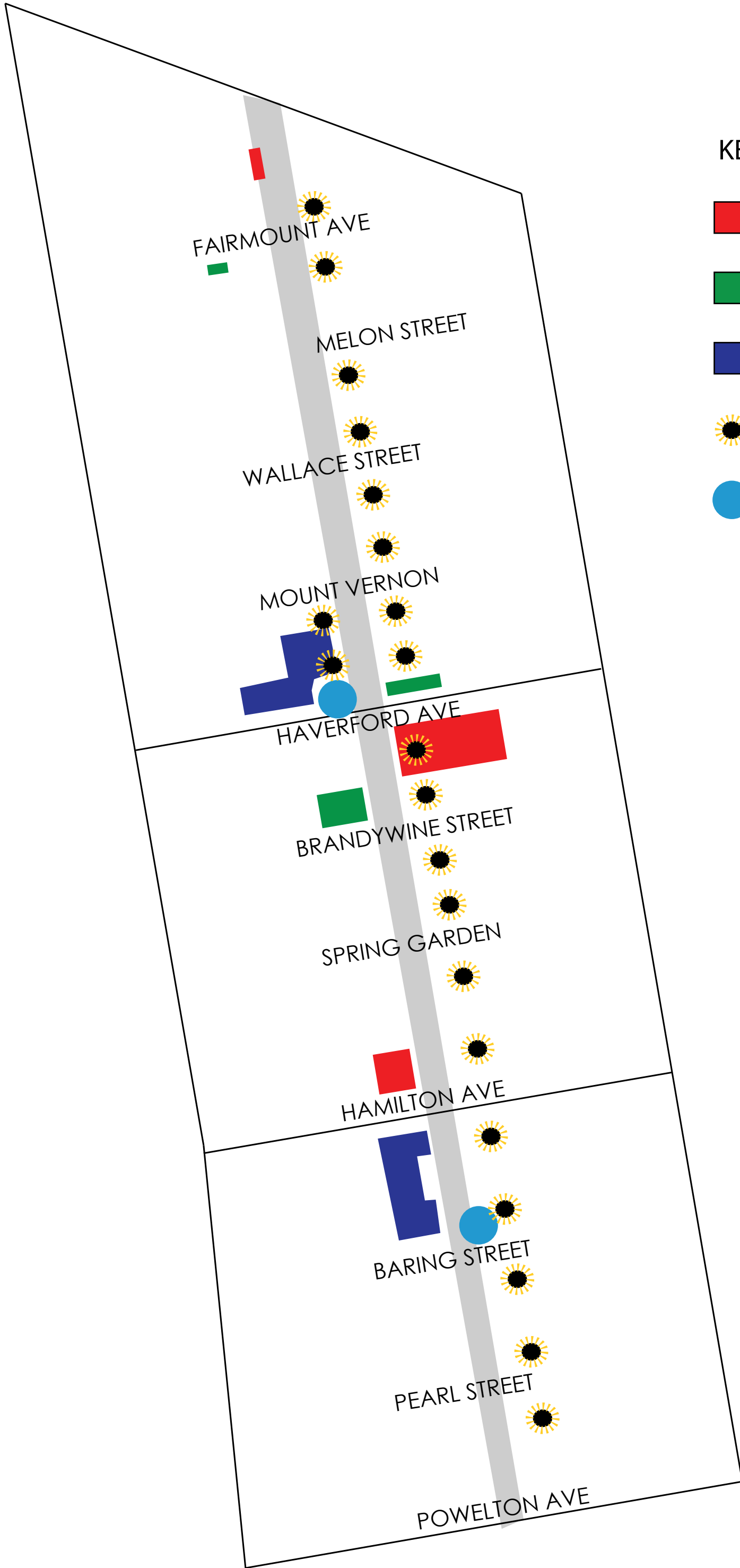


# MAP COMPILATION



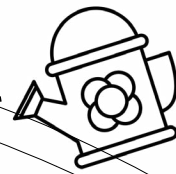
## KEY:

-  PUBLIC SPACE
-  FOOD
-  PRIVATE
-  LIGHT
-  BUS STOP

# USER GROUPS



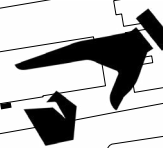
INDEGO BIKE SHARE



HOMEOWNERS BETWEEN FAIRMOUNT AND HAMILTON HAVE WELL MANICURED PORCH GARDENS



RESIDENT SELLING BASIC TOILETRIES FROM HER FRONT PORCH



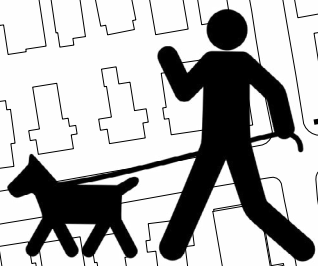
LARGE AMOUNT OF TRASH ON HAVERFORD



DREXEL SECURITY CONGREGATED AROUND BRANDY-WINE PARK



BIRDS AND BEES FROM SYCAMORE TREES

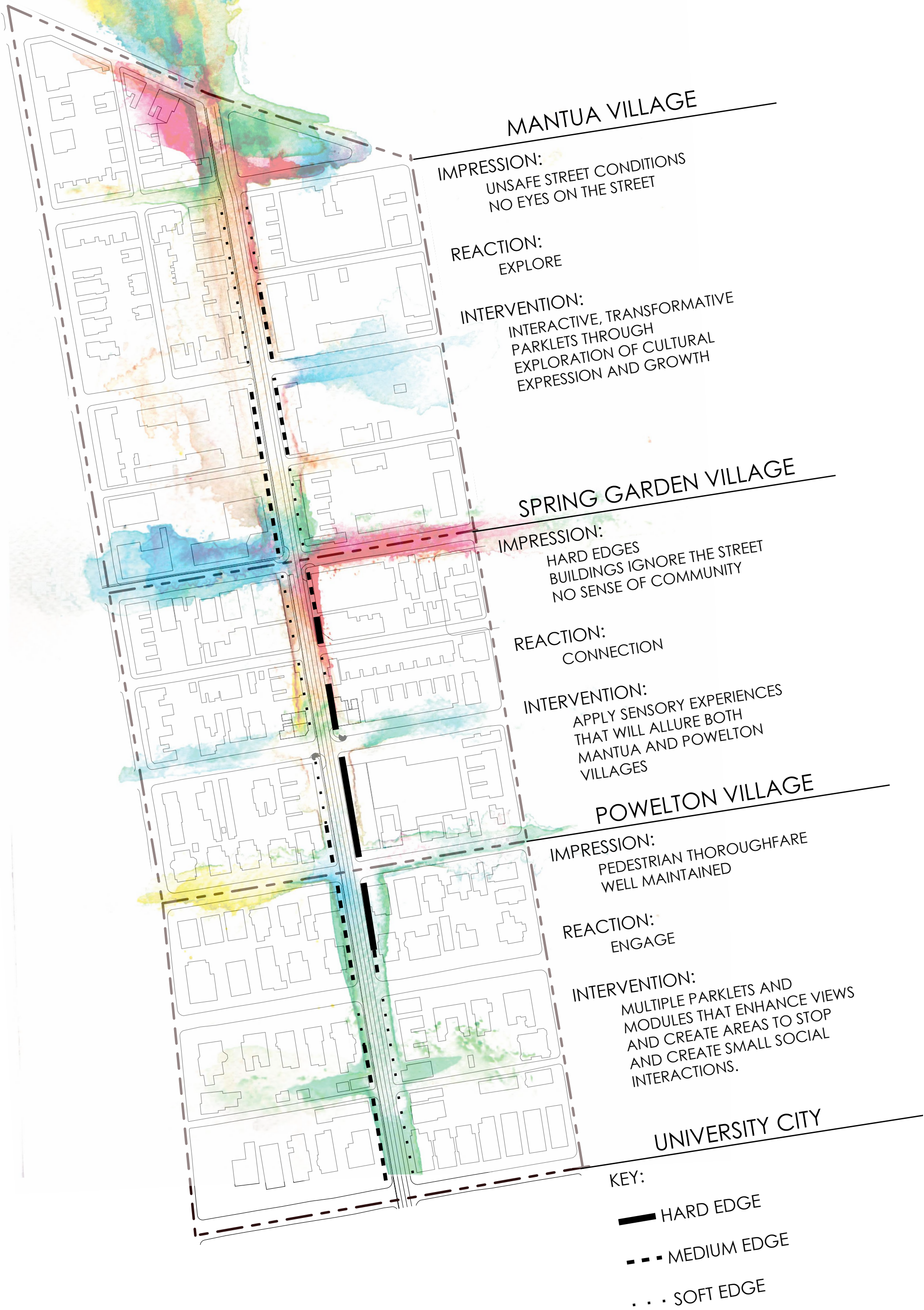


MULTIPLE DOG WALKERS FROM POW-ELTON TO SPRING GARDEN



LARGE AMOUNT OF BICYCLE RIDERS FROM POWELTON TO BRANDYWINE



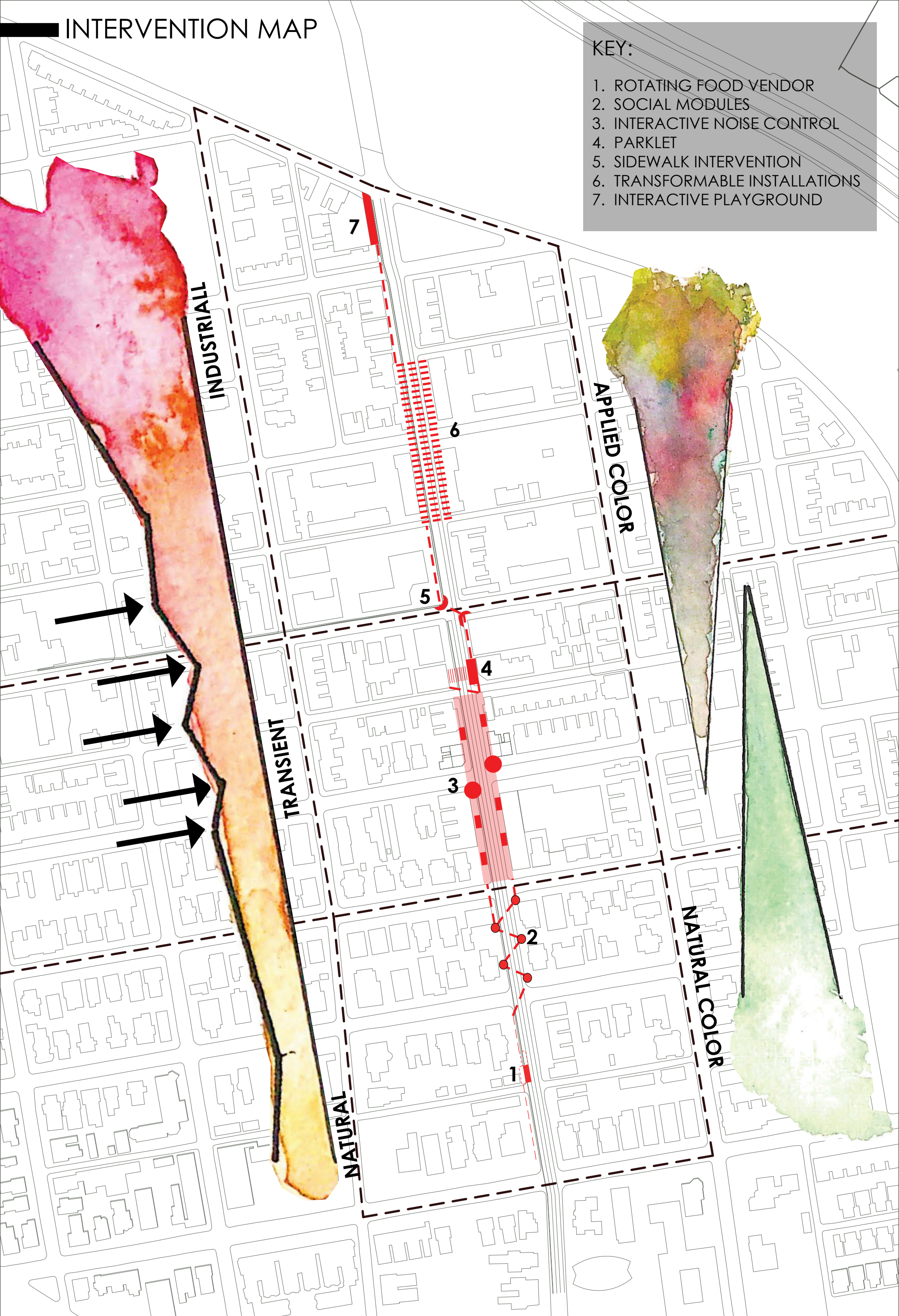




# INTERVENTION MAP

## KEY:

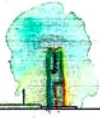
- 1. ROTATING FOOD VENDOR
- 2. SOCIAL MODULES
- 3. INTERACTIVE NOISE CONTROL
- 4. PARKLET
- 5. SIDEWALK INTERVENTION
- 6. TRANSFORMABLE INSTALLATIONS
- 7. INTERACTIVE PLAYGROUND



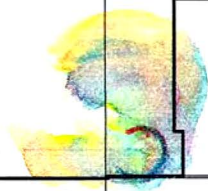
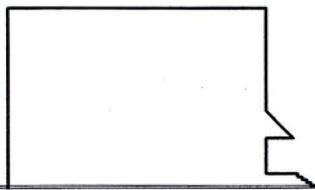


# SERIAL SECTIONS

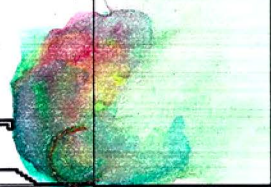
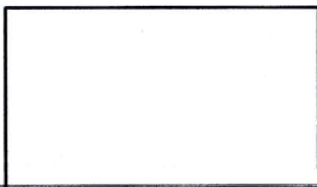
Mantua Ave.



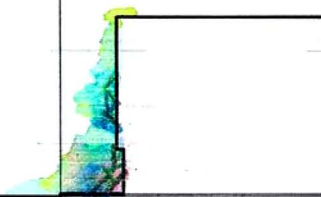
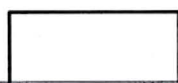
N. Spring Garden St.



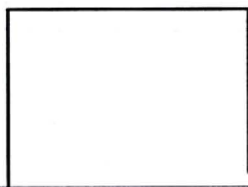
S. Spring Garden St.



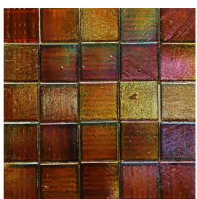
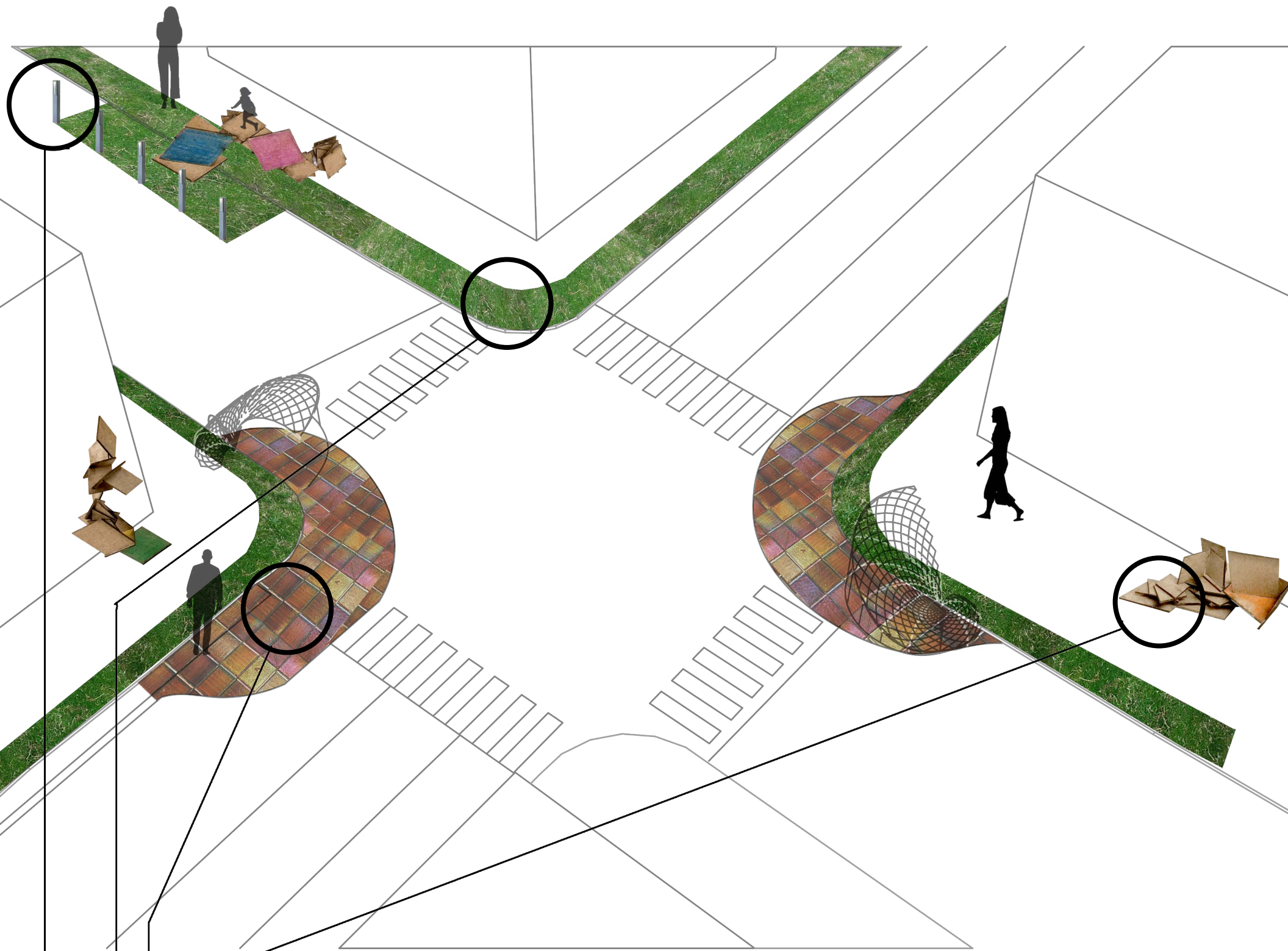
Hamilton St.



Pearl St.



# STREET INTERVENTION



Connection to the neighborhood: creating a hands on, personal connection with the people of Mantua. Art and personal touch seem to be a good way to connect with the people here, so if tiles were given out to people who could paint and build walkways or small plazas with them



Softening the edges: nature is a way to help create a visual and experiential barrier between people and machines. Grass would act as this barrier, and it might create a comfortable place to enjoy the interventions along Spring Garden and 34th St.



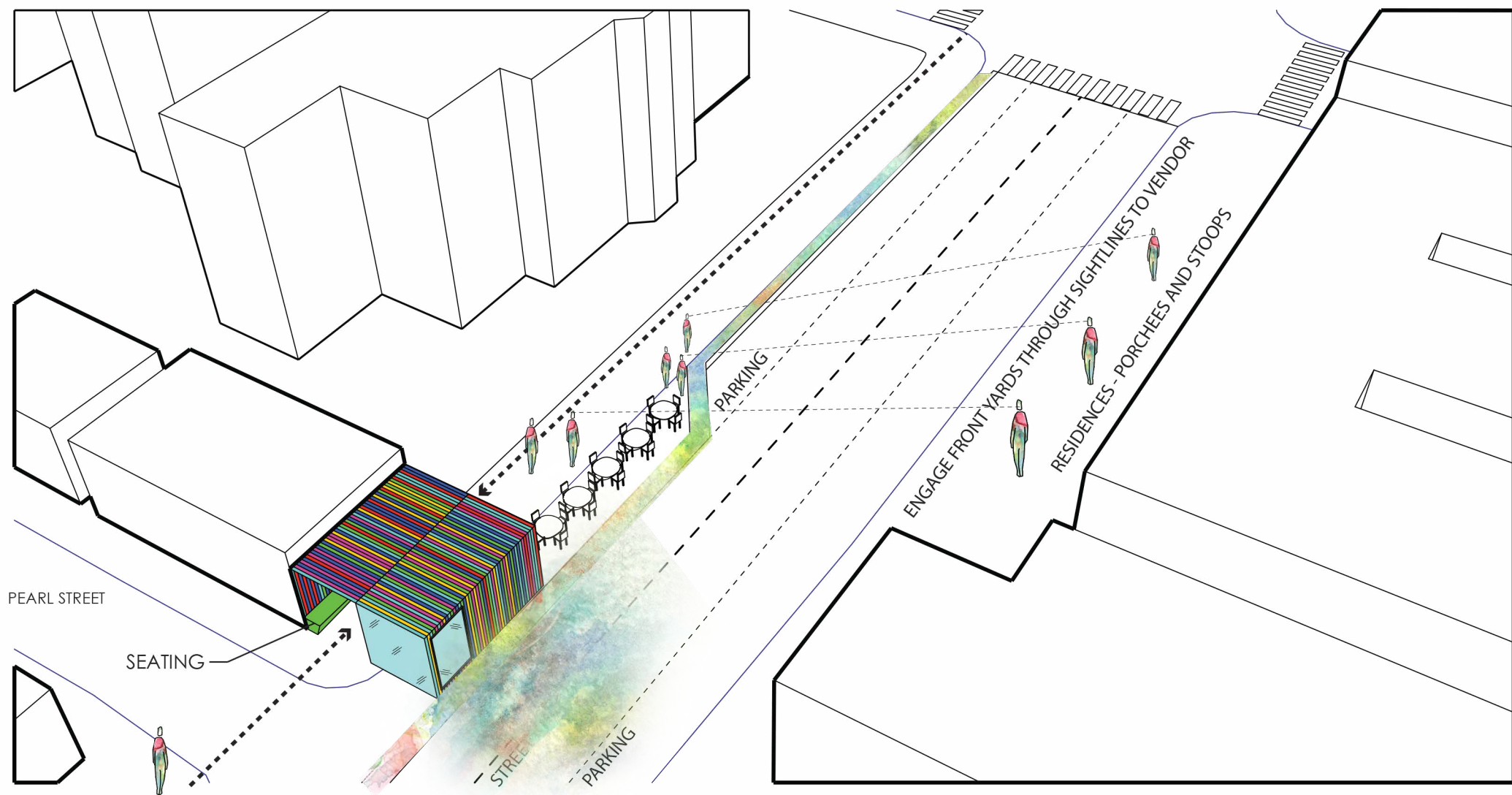
Interventions and Parklets: in addition to the large interventions on the corners of 34th and Spring Garden, smaller, more abstract forms will be placed closer to Brandywine and Hamilton. These act as visual connections along the street, as well as interactive places of rest. They might be designed and built by the people of Mantua



Physical barriers: in the places where the sidewalk extends into parking (parklets), a more concrete, physical barrier is needed for safety. Something that provies safety from cars and also from the dark may be necessary in some of the more run down areas of Mantua, in order to create safer zones to positively activate the areas

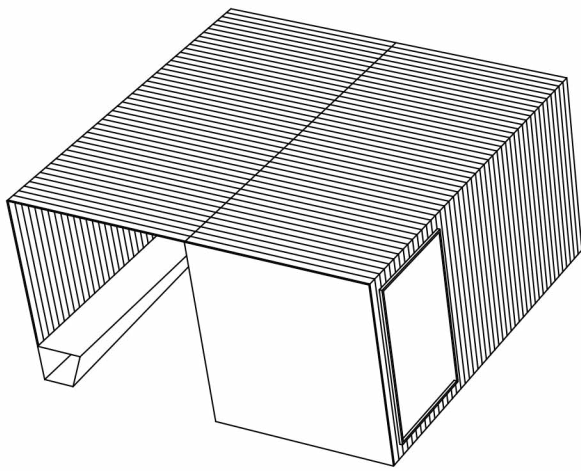


# DINING ALONG THE CORRIDOR

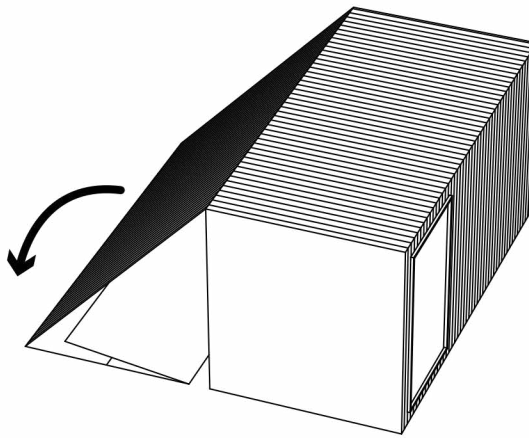


## ROTATING FOOD VENDERS

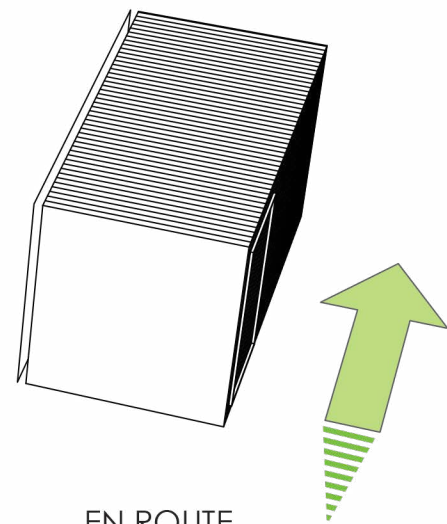
LOCAL, FRESH FOOD TO ATTRACT ALL USERS ALONG THE CORRIDOR



STATIONARY STRUCTURE

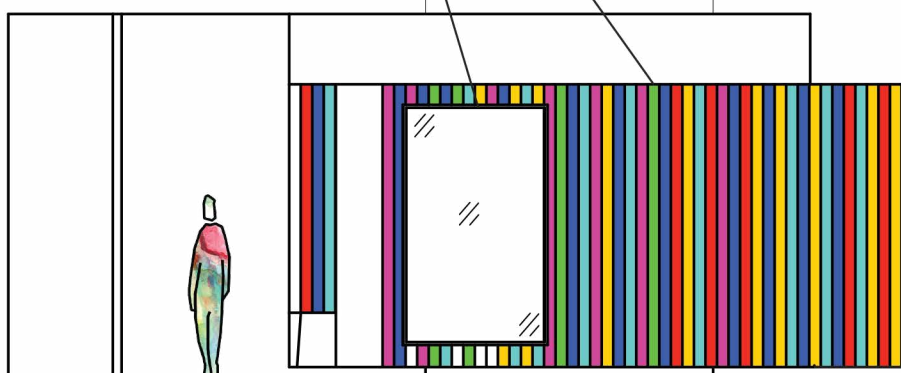


TRANSFORMABILITY



EN ROUTE

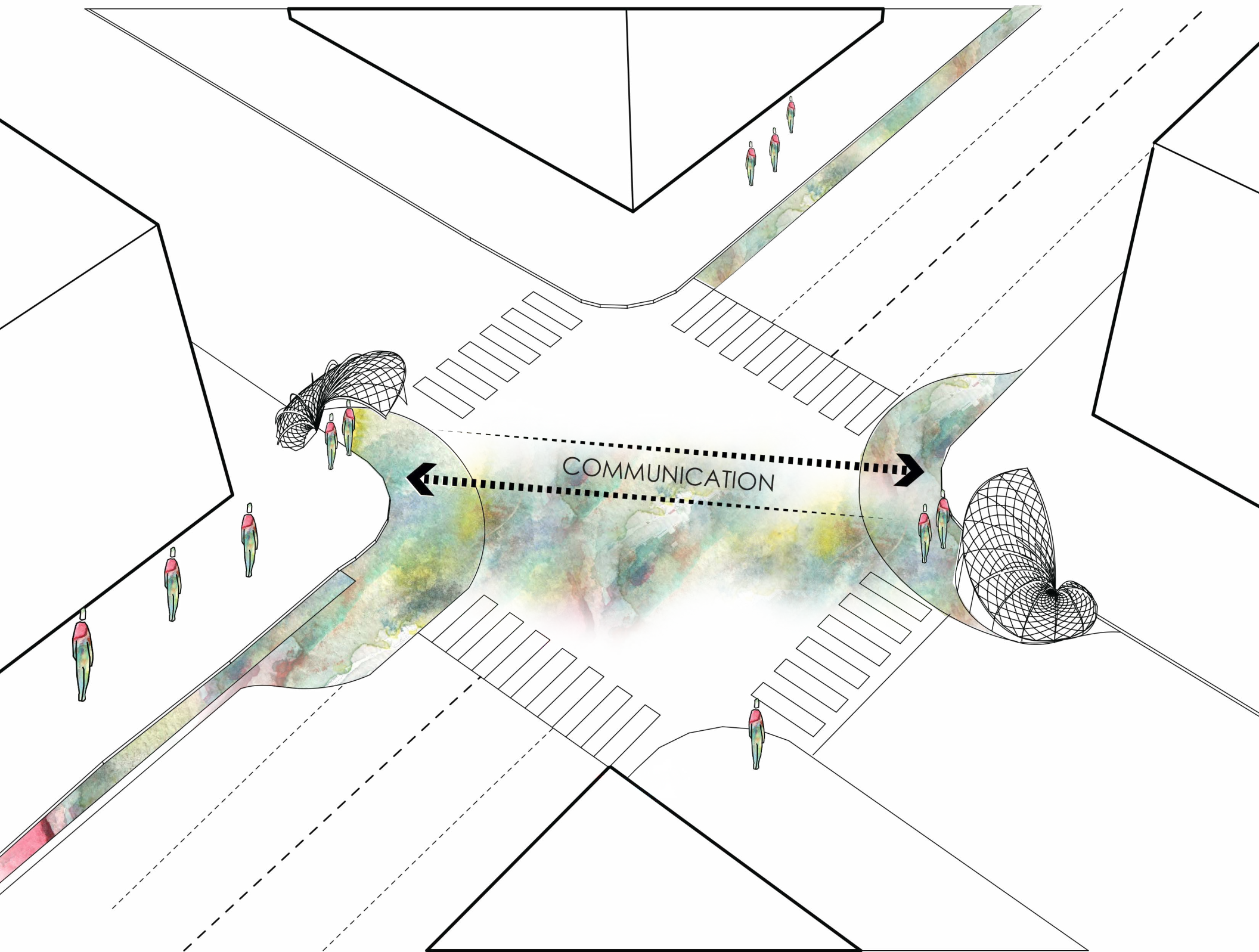
APPLY COLOR TO FORM VISUAL INTEREST  
TRANSPARENCY TO ENGAGE STREET



EXTERIOR SEATING TO CAPTURE THE PASSERBYS

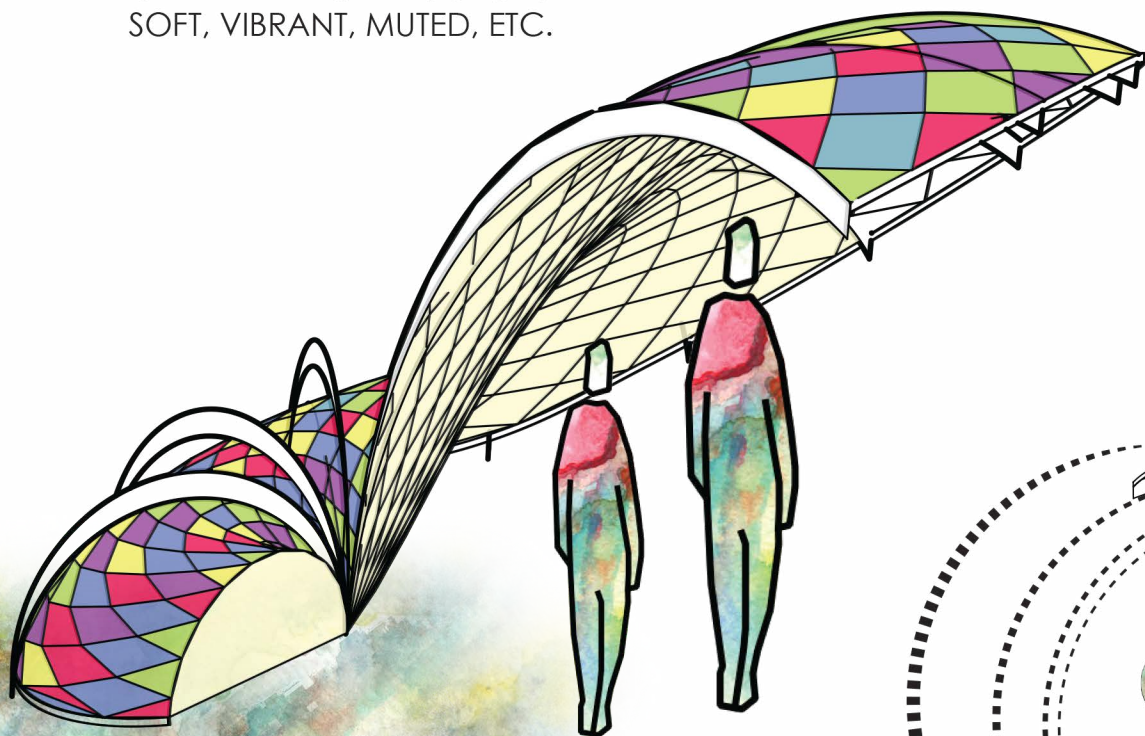




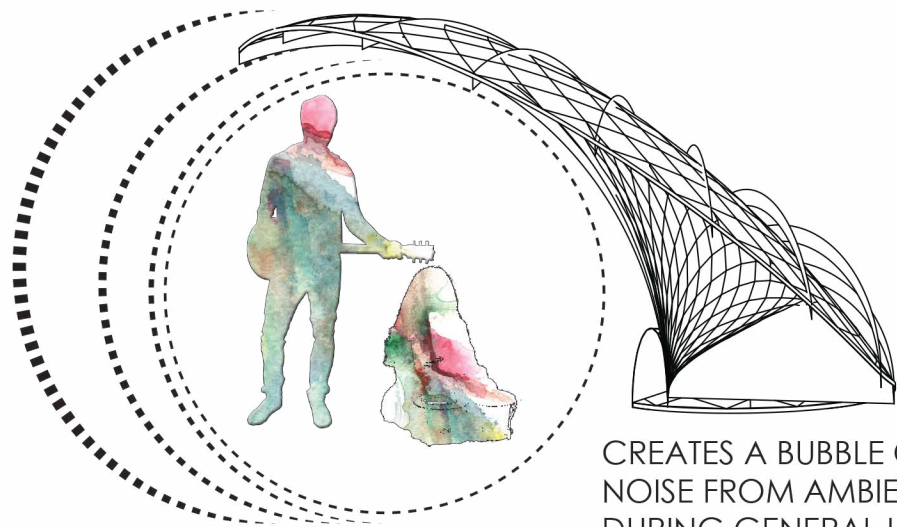


**INTERACTIVE NOISE CONTROL**  
 ENHANCING SENSORY EXPERIENCE & INCITE COMMUNICATION

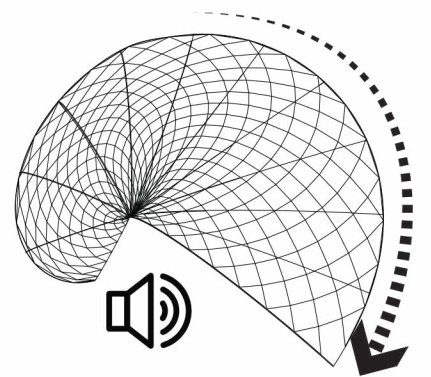
EACH NEIGHBORHOOD CAN CLAIM THEIR OWN COLORS: SOFT, VIBRANT, MUTED, ETC.



**TYPICAL REVERB STATIONS**



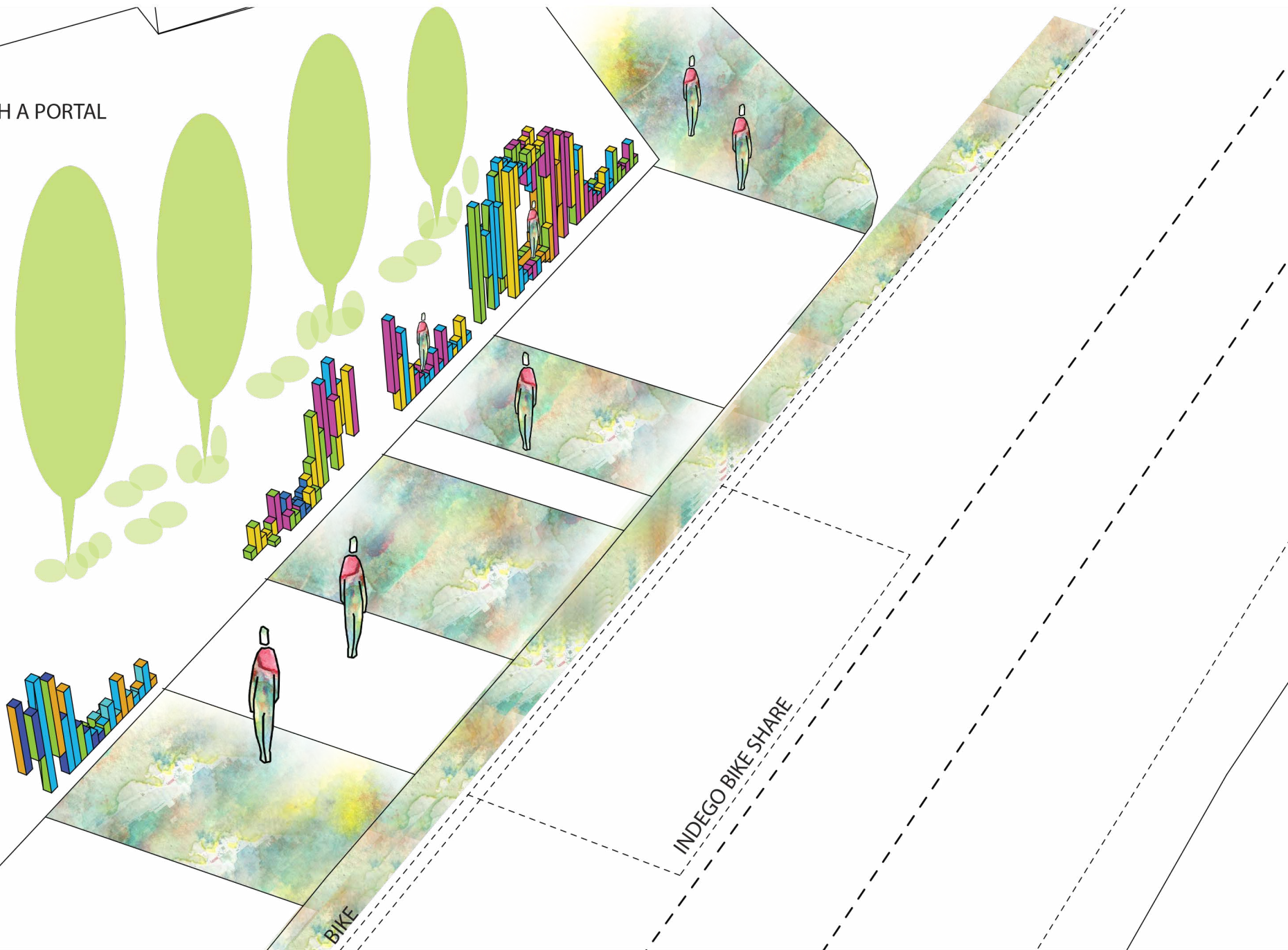
CREATES A BUBBLE OF WHITE NOISE FROM AMBIENT SOUNDS DURING GENERAL USE. AMPLIFIES NOISE FOR PERFORMERS





# CULTURAL/EMOTIONAL EXPLORATION

REESTABLISH A PORTAL



## PROVIDING AN EXPLORATION

COLORFUL INSPIRATION WITH MURAL PAINTINGS AS AN ENTRY

## INTERACTIVE PLAY

THIS AREA OF THE INTERVENTION WILL PROVIDE A SENSE OF IDENTITY ALONG 34TH STREET, RIGHT AT THE BRIDGE BETWEEN MANTUA AVE AND THE

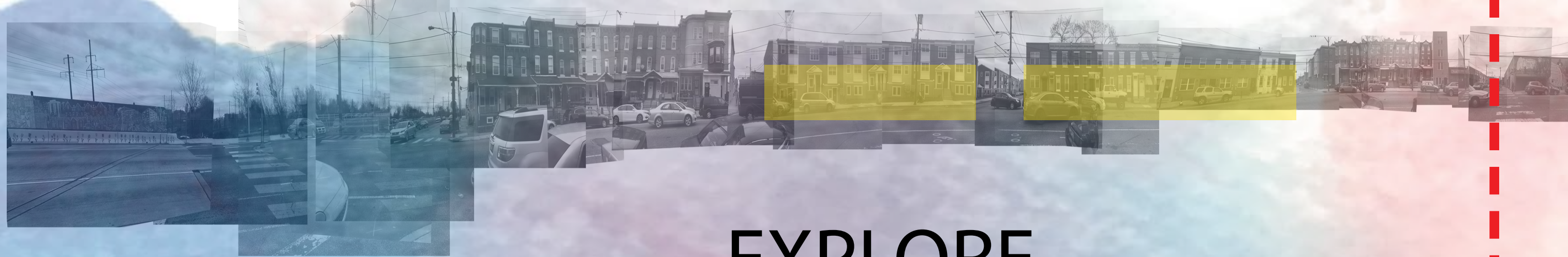
IT WILL PROVIDE SPACE FOR ARTISTIC INSTALLATION AND ALLOW COMMUNITY MEMBERS TO PAINT MURALS AT THE ENTRY POINT OF THEIR OWN NEIGHBORHOOD.





EAST SIDE

MANTUA VILLAGE



# EXPLORE

MANTUA VILLAGE



NORTH



WEST SIDE

NORTH



# OF STREET

SPRING GARDEN VILLAGE

SPRING GARDEN VILLAGE

POWELTON VILLAGE



# CONNECT

# ENGAGE

SOUTH

SPRING GARDEN VILLAGE

SPRING GARDEN VILLAGE

POWELTON VILLAGE



SOUTH

# OF STREET