



Fairmount Ave.



Site Plan

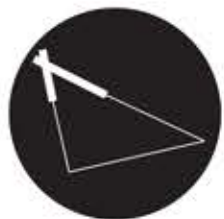


34th Street



Mantua Ave.

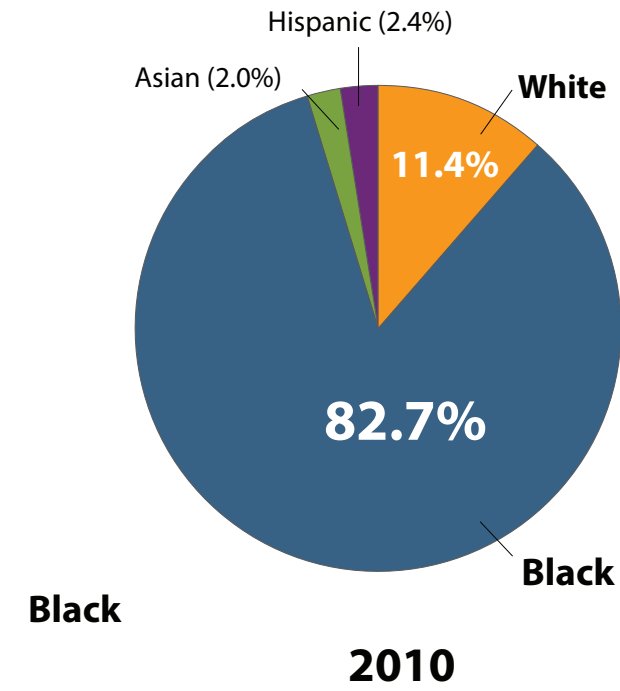
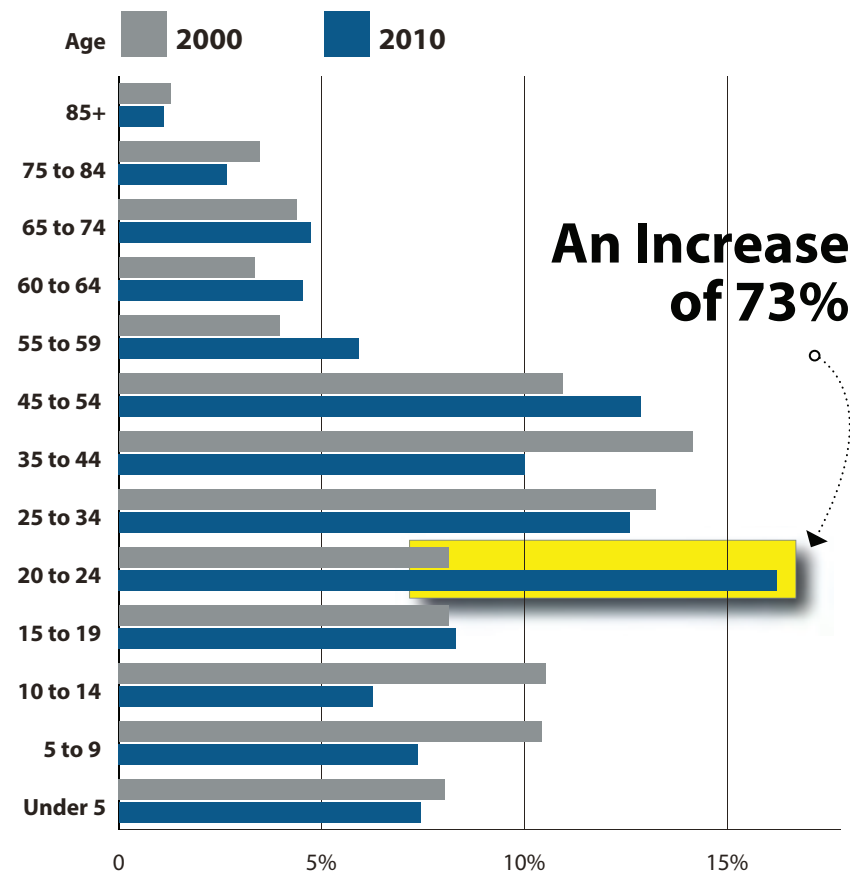
EXISTING CONDITIONS



Less children, a growing number of adults and seniors

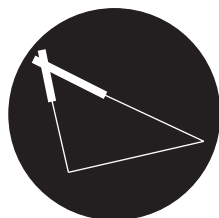
In 2010, Mantua had less children, a growing number of adults and seniors, and a significant growth in the number of young adults, reflecting a growing number of university students who have established residence in Mantua in recent years.

Age Distribution



Source: 2000 and 2010 U.S. Census

Source: "We are Mantua"; http://planphilly.com/uploads/media_items/mantua-transformation-plan-1.original.pdf



DEMOGRAPHICS

CIRCULATION

- Point of major traffic around site
- Mix of one way and two way streets creates dangerous crossings to central site
- Site located in center of vehicle movement
- Poor access through public transportation

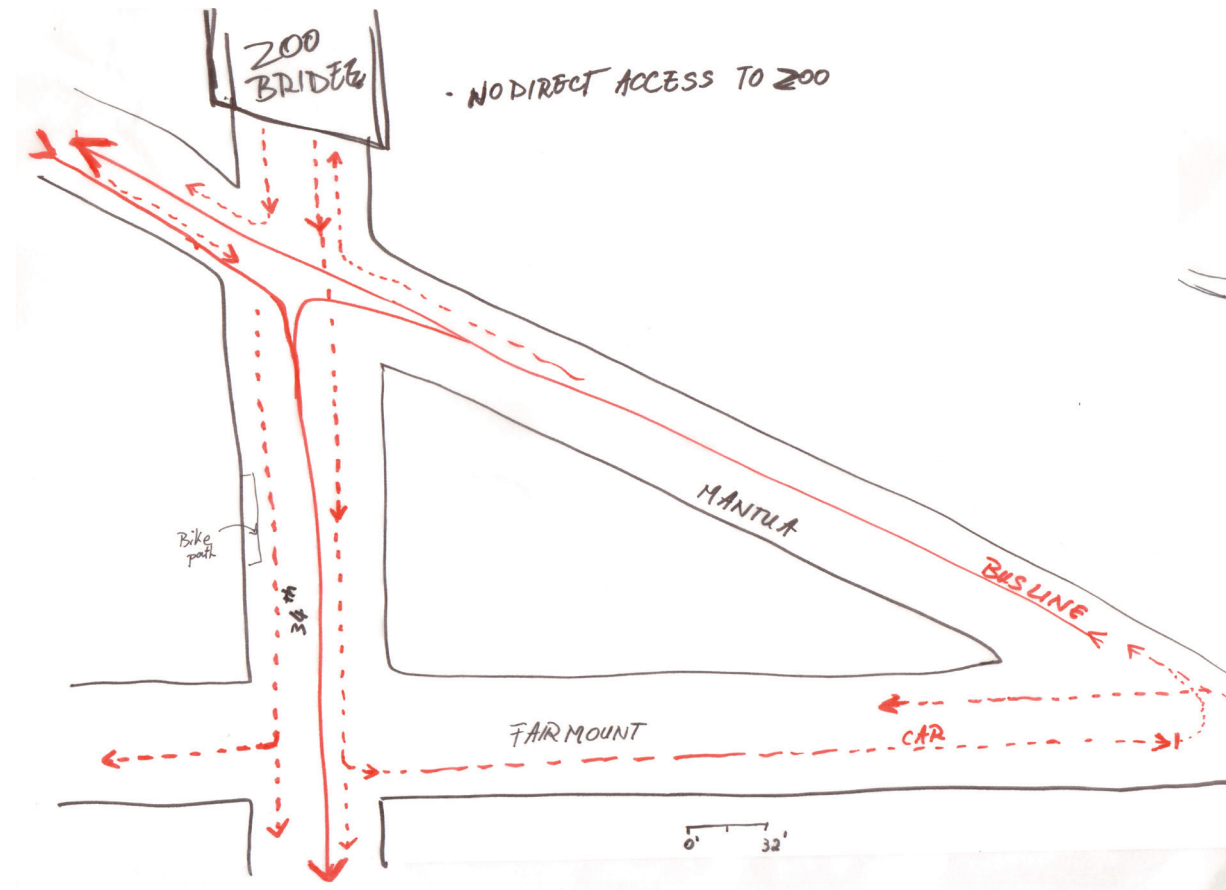


Diagram of Vehicular Circulation Surrounding Site

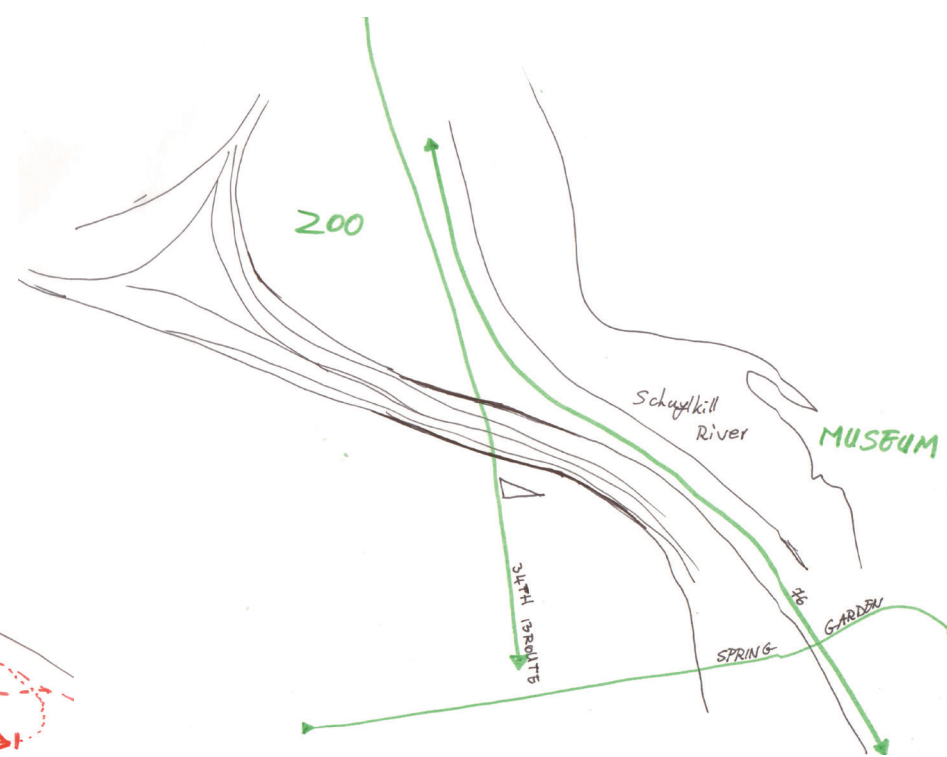


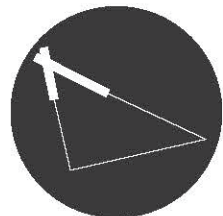
Diagram of Main Roads of Mantua

DESIGN DECISIONS

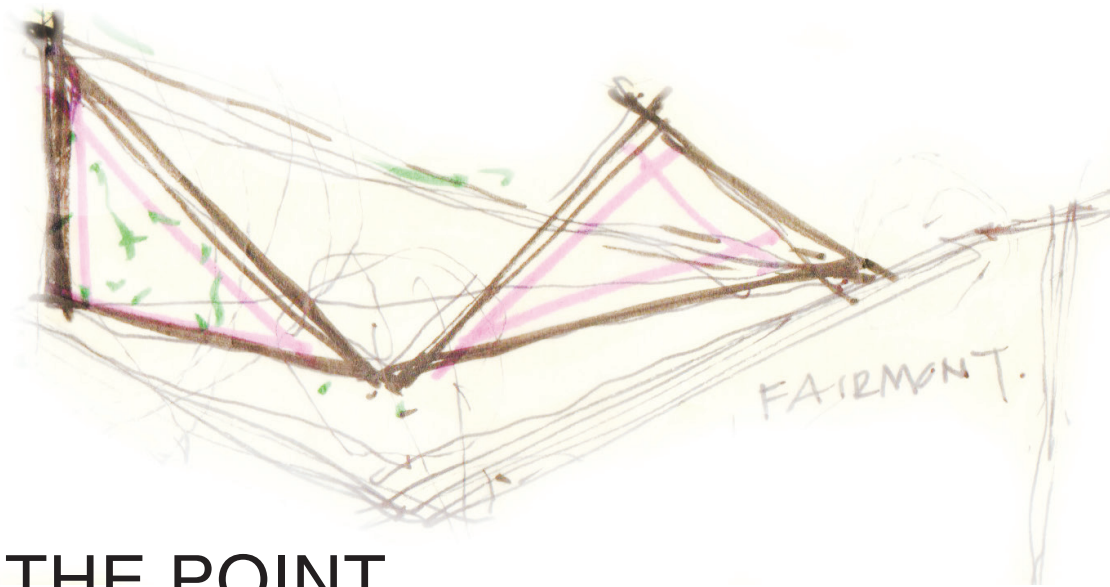
- temporary closure of either street when needed for events
- slowing down traffic by adding stop signs and narrowing corners at intersection



Diagram of Main Bus Line

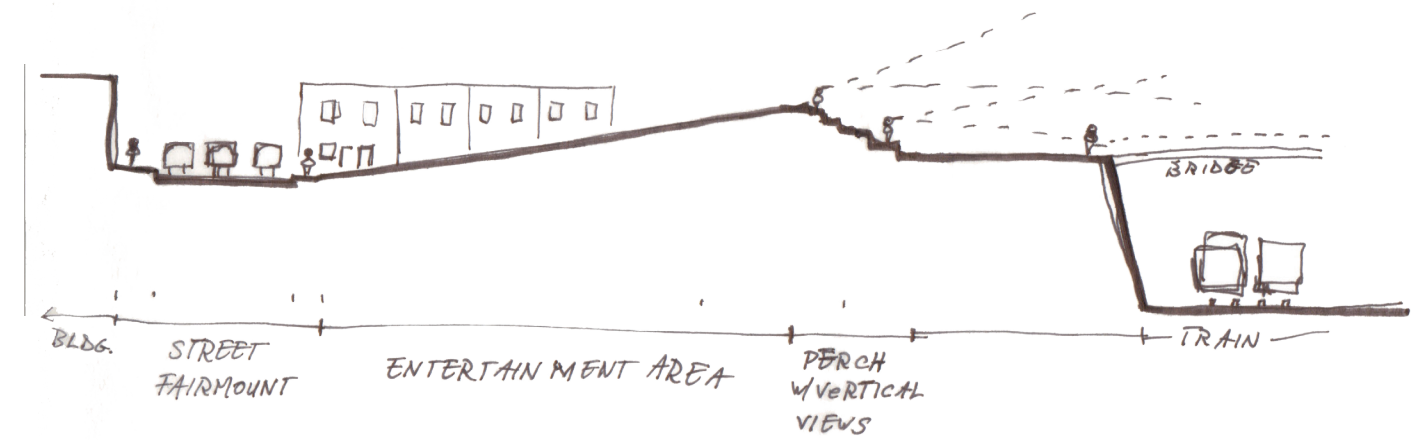


P R O C E S S



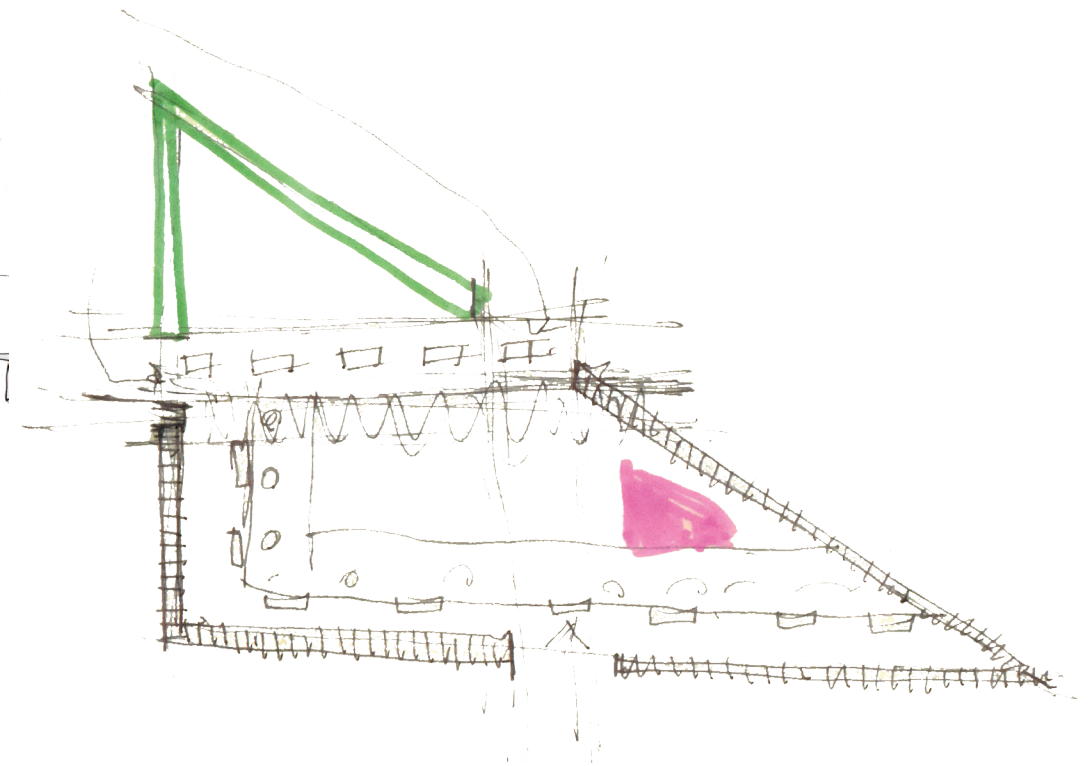
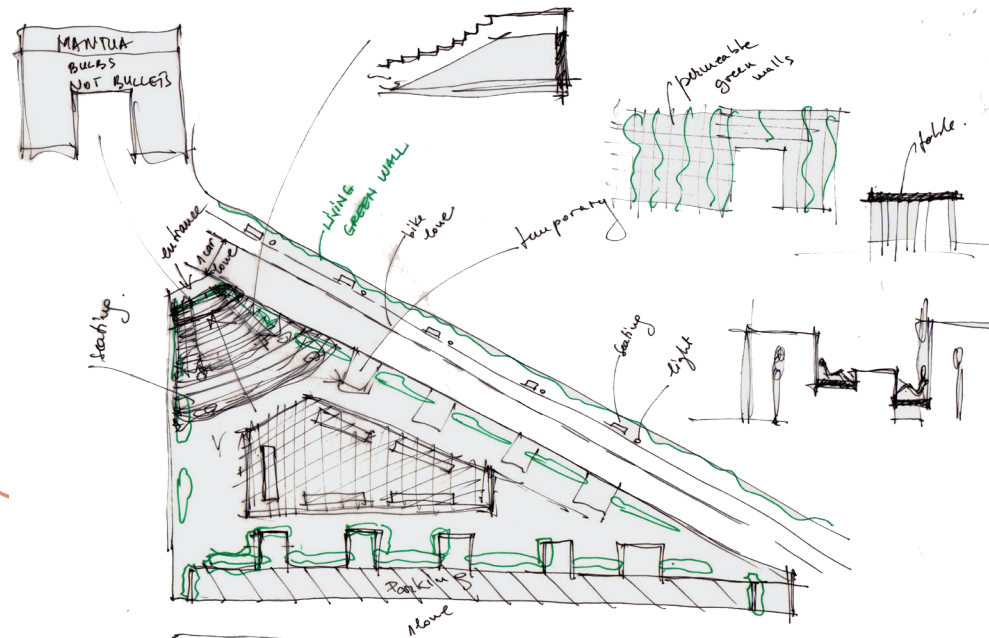
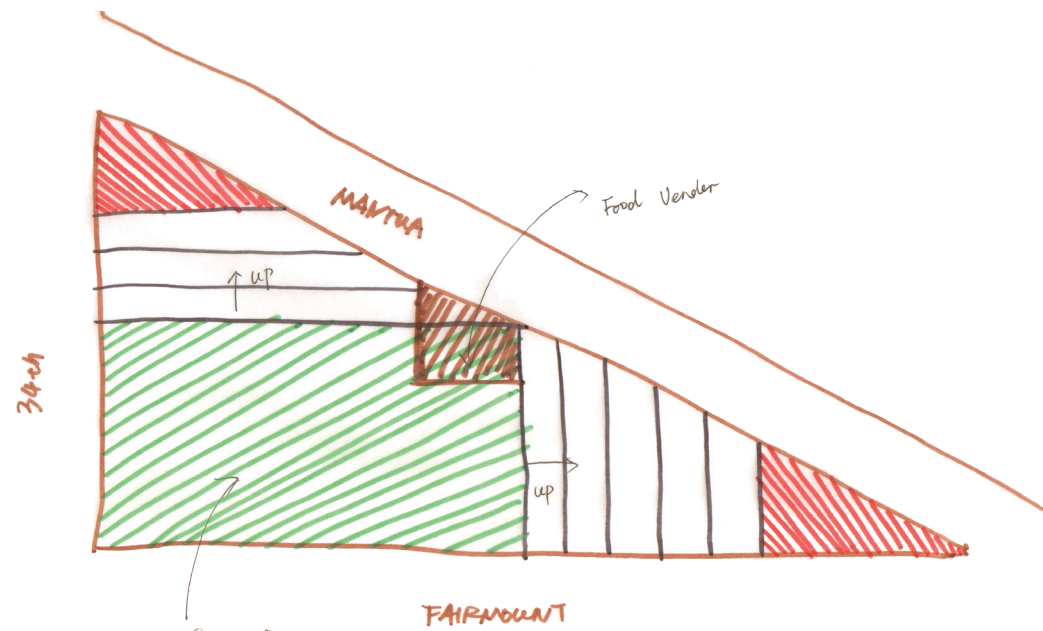
THE POINT

- A clear, welcoming gateway into Mantua
- High landmark seen from afar
- Escaping the city to enjoy the vistas

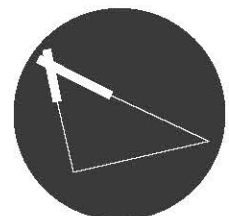


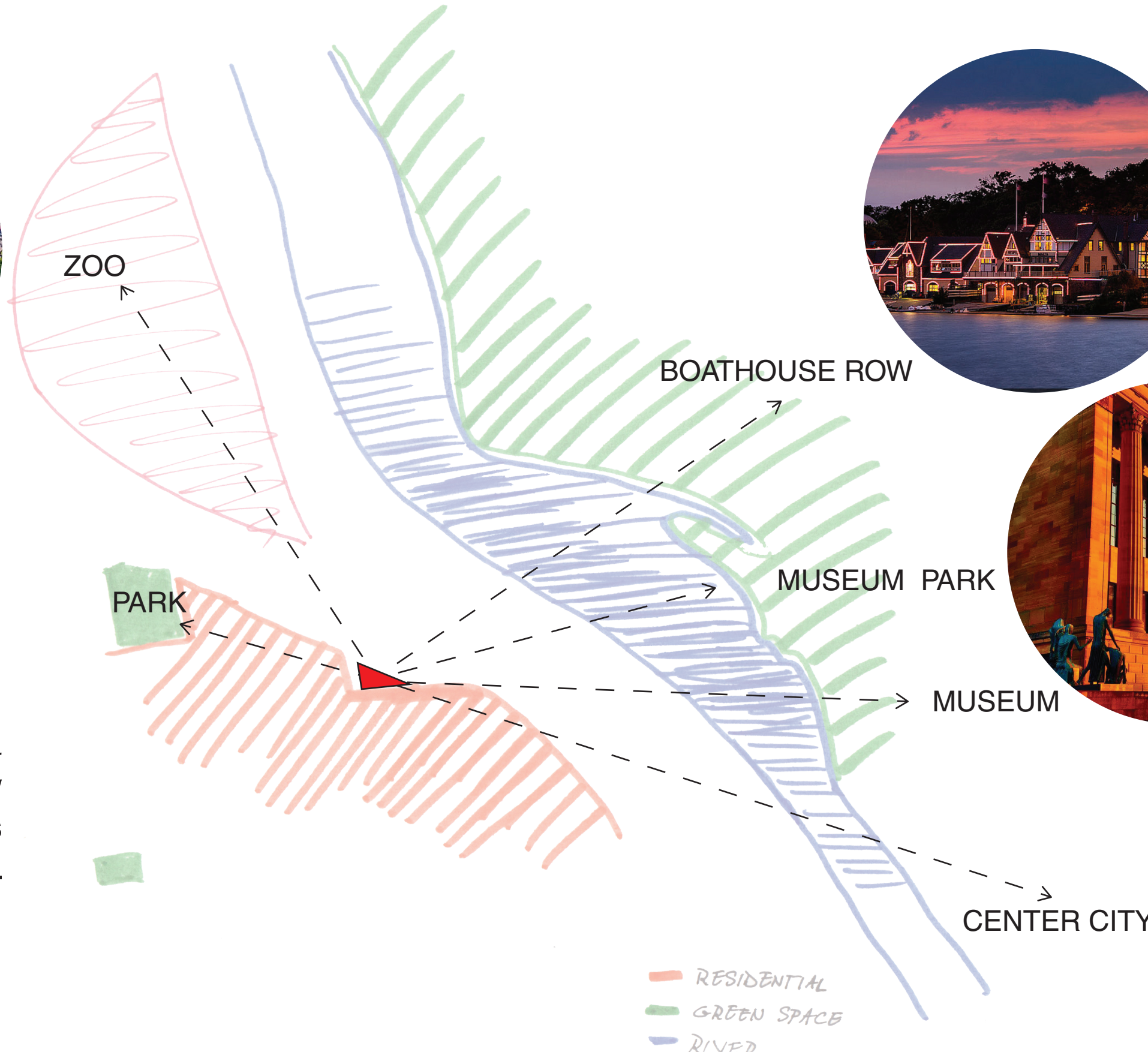
DESIGN DECISIONS

- Signage of "Welcome to Mantua" facing the street
- Gradual change in elevation leading towards a peak
- Street side covering for a bus stop from the landmass



P R O C E S S

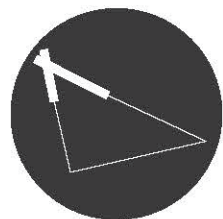


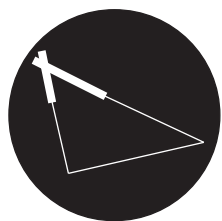


VIEWS

-The Triange at Mantua is elevated to allow vistas of Philadelphia's beautiful landmarks.

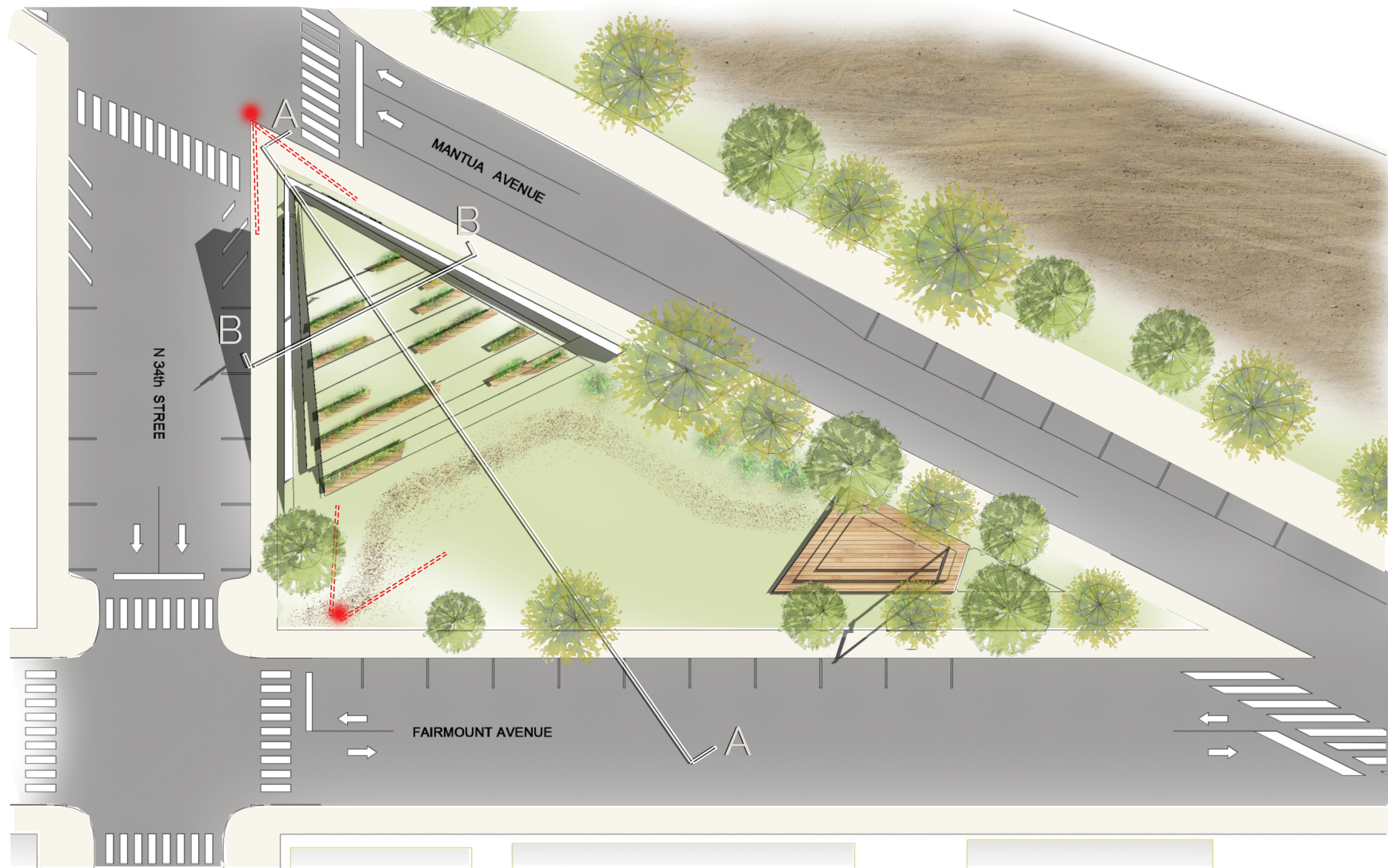
P R O C E S S





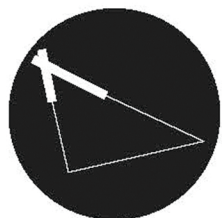
INSPIRATION IMAGES

• GROUP ONE • A. CULCIAR + I. EFTIMIE + T. HAMER + T. KAUFMAN + R. KIMBALL + R. PEREIRA + S. MA + J. MAAMARI



SCALE: 1/32"=1'-0"

S I T E P L A N



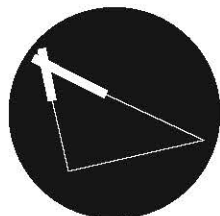


SECTION AA
SCALE: 1/16" = 1'-0"



SECTION BB
SCALE: 1/8" = 1'-0"

SECTION





G A T E W A Y P E R S P E C T I V E

• GROUP ONE • A. GULCIAR + I. EFTIMIE + T. HAMER + T. KAUFMAN + R. KIMBALL + R. PEREIRA + S. MA + J. MAAMARI



P A R K E N T R A N C E V I E W



• GROUP ONE • A. CULCIAR + I. EFTIMIE + T. HAMER + T. KAUFMAN + R. KIMBALL + R. PEREIRA + S. MA + J. MAAMARI