

Navigation Page

The themes below group together different indicators that describe how communities in Philadelphia may be vulnerable to COVID-19.

Click on a theme title beneath an image to view a dashboard with maps and data about that theme.

To come back to this page and view another theme, click "go back to navigation page" or use the tabs at the top of the page.

To learn about how to use this tool, the terms we use and our data sources, click at the bottom of the page.



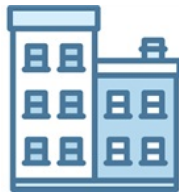
Socioeconomic Status
Theme



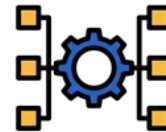
Housing Composition
and Disability Theme



Minority Status
and Language Theme



Housing and
Transportation Theme



Theme Scores

How do I use this tool?

Key terms

Data sources

Here is an example of a dashboard with explanations of each tool. Use these tools on a dashboard to see the information you are interested in.

Hover over this box to see instructions

Click an indicator to see on the map

Click a measure to see on the map

Click here to see different parts of the city

Hover over the map to see information about a census tract

Type in a neighborhood to see on the map

Click on a tract to see this graph change. To see the map again, click on this gray area

How do I use this map?

What indicator would you like to see?
 age 25+ without high school diploma
 living in poverty
 unemployed

What measure would you like to see?
Number of people

What part of the city would you like to see?
Highlight City

What neighborhood would you like to see?
Highlight Neighborhoods

Socioeconomic Status: This theme covers data related to the social standing or class of the individuals that live in this area. This information is useful to understand what social and economic resources are available in times of crisis.

Percent of racial and ethnic groups that are unemployed in Census Tract 108, Mantua

Race	Percent
Black or African American	10.0%
White not Hispanic	8.0%

Race
■ Asian
■ Black or African American
■ Hispanic
■ White not Hispanic

Race and racism play a huge role in affecting vulnerability to COVID-19. For more information, read about our colleagues' Dr. Barber and Dr. Headen's work at <https://drexel.edu/uhc/resources/briefs/Covid-19%20in%20Context/>.

Go back to Navigation Page

© 2020 Mapbox © OpenStreetMap

Philadelphia Vulnerability to COVID-19: Socioeconomic Status

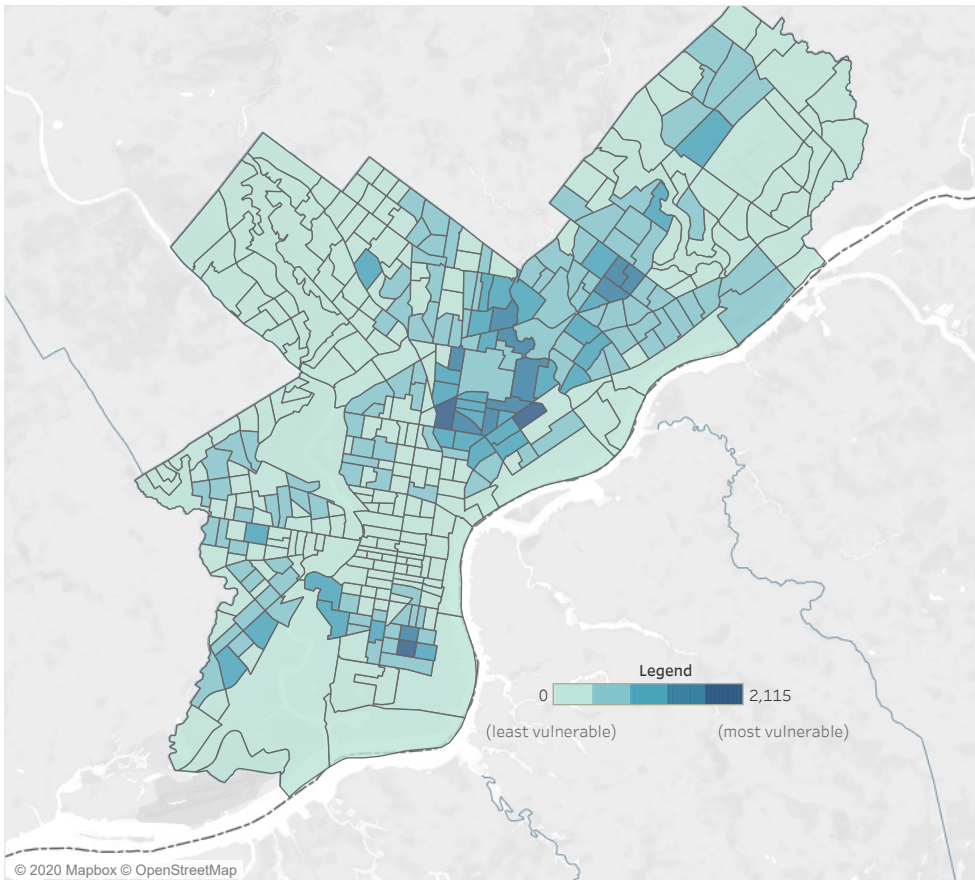
How do I use this map?

What indicator would you like to see?
 age 25+ without high school diploma
 living in poverty
 unemployed

What measure would you like to see?
 Number of people

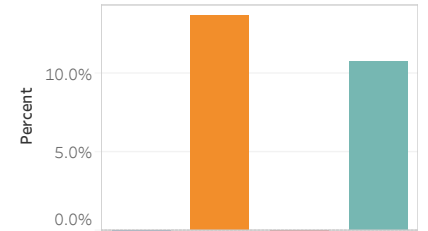
What part of the city would you like to see?
 No items highlighted

What neighborhood would you like to see?
 No items highlighted



Socioeconomic Status: This theme covers data related to the social standing or class of the individuals that live in this area. This information is useful to understand what social and economic resources are available in times of crisis.

Percent of racial and ethnic groups that are unemployed in Census Tract 108, Mantua



Race/Ethnicity
 Asian
 Black or African American
 Hispanic
 White not Hispanic

* Chart percentages do not appear when a racial group has 10 or less residents in the indicator category

Race and racism play a huge role in affecting vulnerability to COVID-19. For more information, read about our colleagues' Dr. Barber and Dr. Headen's work at <https://drexel.edu/uhc/resources/briefs/Covid-19%20in%20Context/>.

Go back to Navigation Page

Philadelphia Vulnerability to COVID-19: Housing Composition and Disability

How do I use this map?

What indicator would you like to see?

- age 17 or younger
- age 65+
- disabled
- single-parent household

What measure would you like to see?

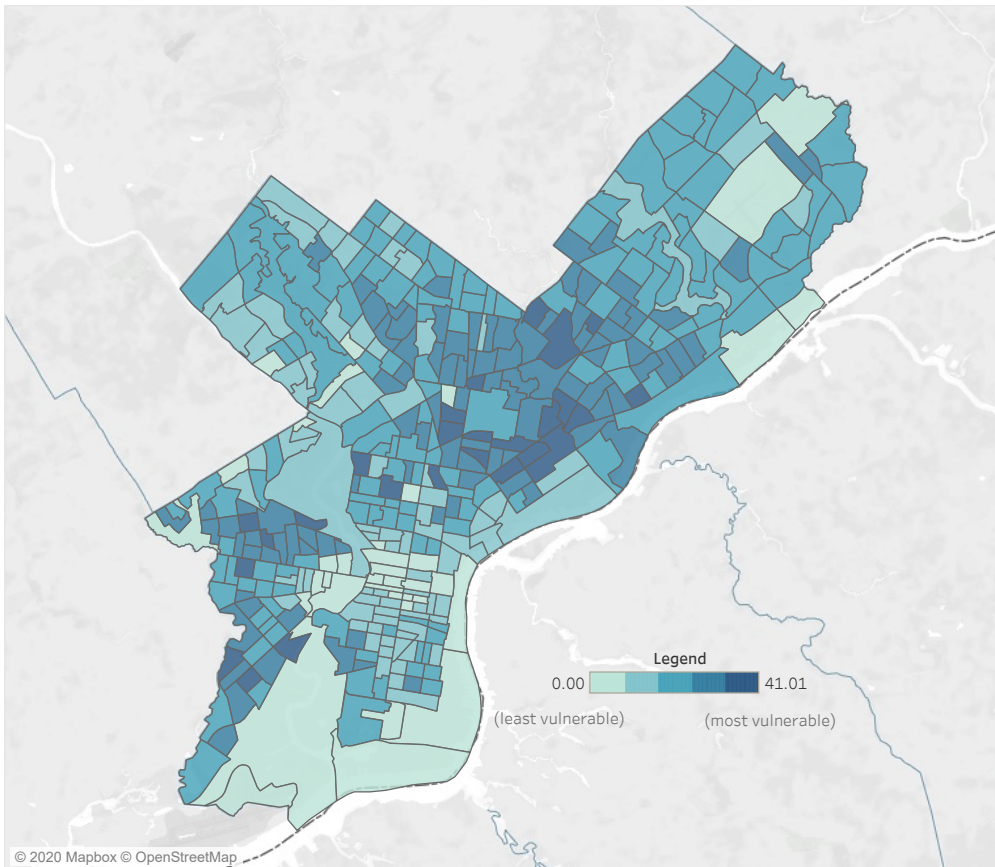
Percent of population

What part of the city would you like to see?

No items highlighted

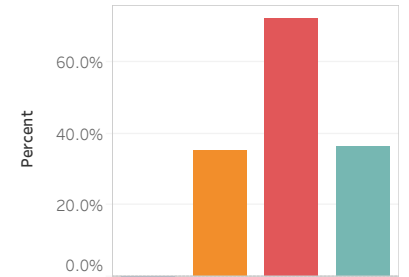
What neighborhood(s) would you like to see?

No items highlighted



Housing Composition and Disability: This theme covers data related to what households look like and what may be their unique needs because of their age group or any disabilities.

Percent of racial and ethnic groups that are age 17 or younger in Census Tract 69, Kingsessing



Data on single-parent households not available by race and ethnicity.

Race/Ethnicity

- Asian
- Black or African American
- Hispanic
- White not Hispanic

Race and racism play a huge role in affecting vulnerability to COVID-19. For more information, read about our colleagues' Dr. Barber and Dr. Headen's work at <https://drexel.edu/uhc/resources/briefs/Covid-19%20in%20Context/>.

[Go back to Navigation Page](#)

Philadelphia Vulnerability to COVID-19: Minority Status & Language

How do I use this map?

What indicator would you like to see?

- minority
- speaks English "less than well"

What measure would you like to see?

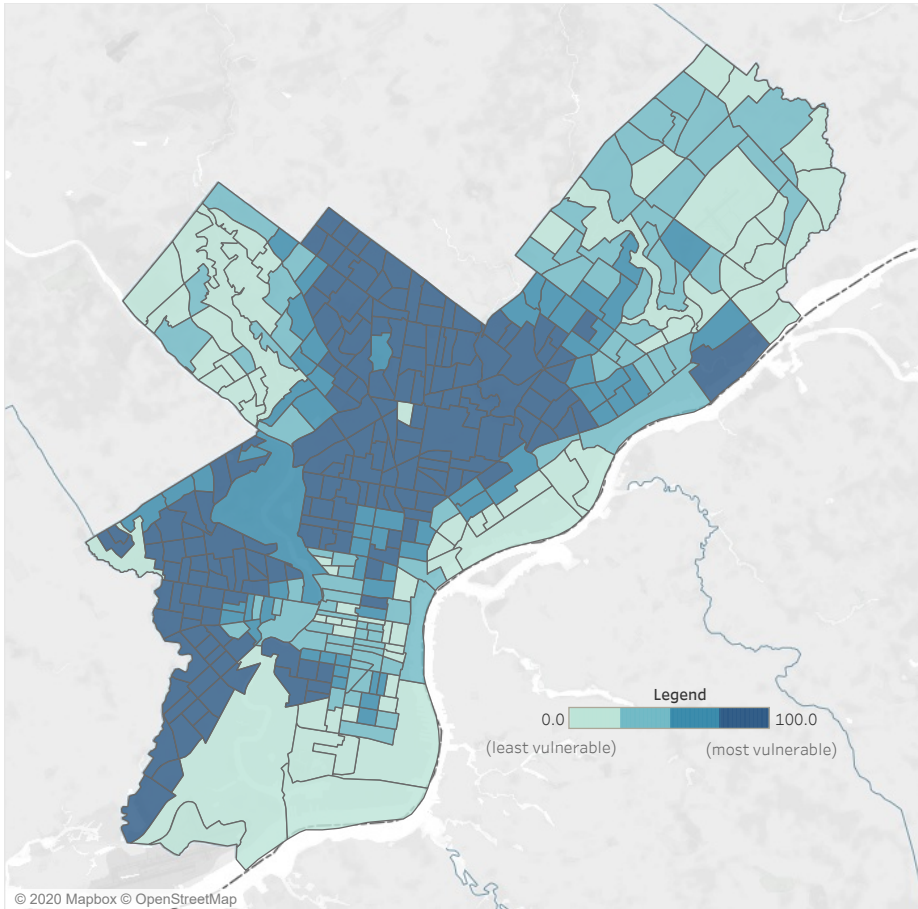
Percent of population

What part of the city would you like to see?

No items highlighted

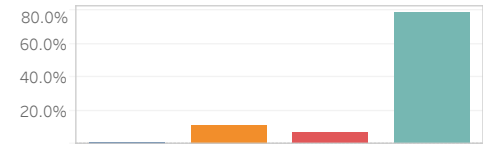
What neighborhood(s) would you like to see?

No items highlighted

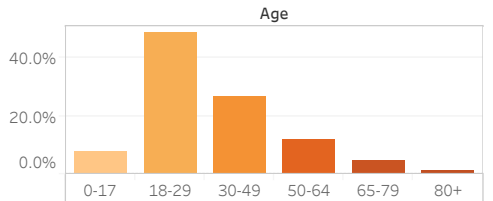


Minority Status and Language Theme: This theme focuses on racial and language minorities because often communities of color, or who speak limited English, experience racism and/or discrimination that creates differences in access and quality of services they receive.

Population of Census Tract 214 in Manayunk by race/ethnicity and age



- Asian
- Black or African American
- Hispanic
- White not Hispanic



Race and racism play a huge role in affecting vulnerability to COVID-19. For more information, read about our colleagues' Dr. Barber and Dr. Headen's work at <https://drexel.edu/uhc/research/briefs/Covid-19%20in%20Context/>.

Go back to Navigation Page

Philadelphia Vulnerability to COVID-19: Housing & Transportation

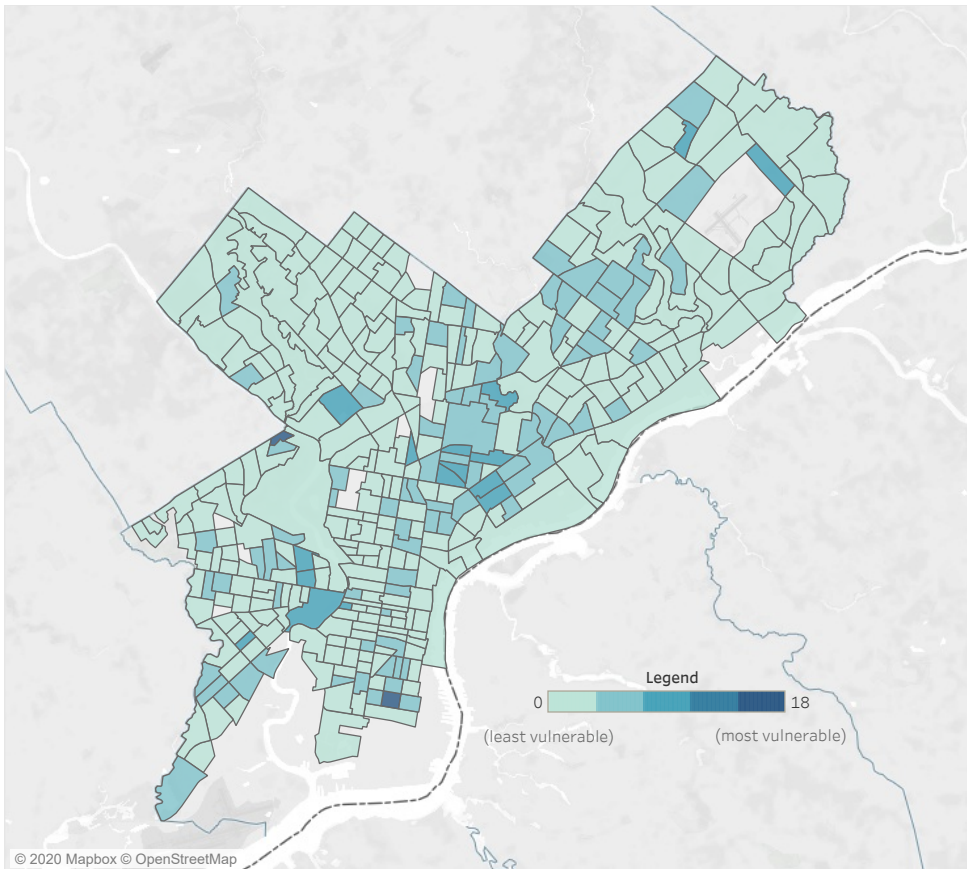
How do I use this map?

- Indicator**
- people in group quarters
 - crowded households
 - households in multi-unit structures
 - households with no vehicle

Number or percent?
Percent

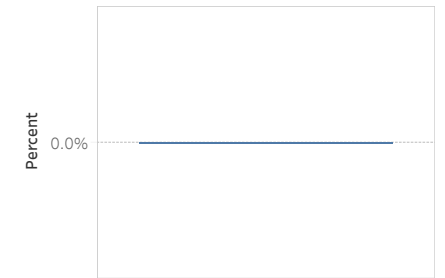
What part of the city would you like to see?
No items highlighted

What neighborhood(s) would you like to see?
No items highlighted



Housing and Transportation Theme: This theme covers data related to the housing environment and how people get around their neighborhood. This is important to consider if people can follow social distance and isolation recommendations and if they have access to resources outside of their community.

Percent of racial and ethnic groups with householders in crowded households in Census Tract 179 in Port Richmond



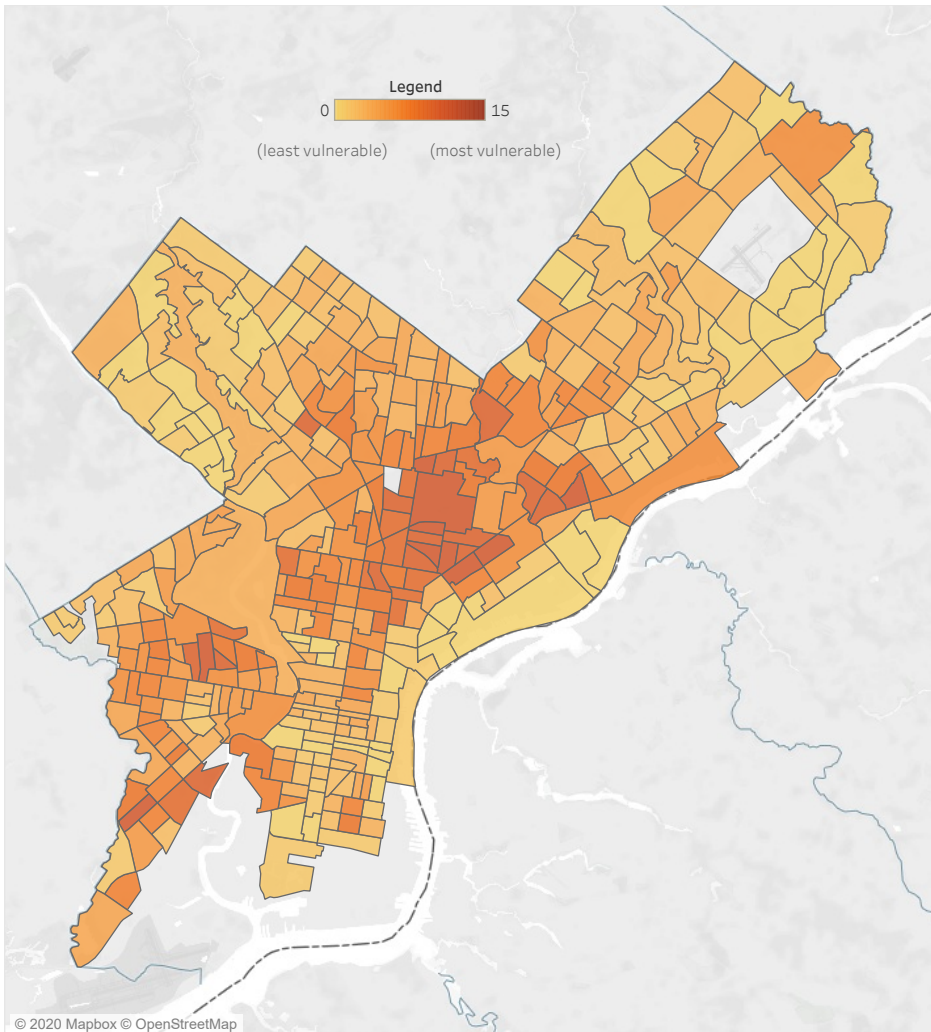
Race1
White not Hispanic

Data on homes with no vehicles and people in group quarters not available by race and ethnicity.

Race and racism play a huge role in affecting vulnerability to COVID-19. For more information, read about our colleagues' Dr. Barber and Dr. Headen's work at <https://drexel.edu/uhc/resources/briefs/Covid-19%20in%20Context/>.

Go back to Navigation Page

Philadelphia Vulnerability to COVID-19: Theme Scores



Which theme would you like to see?

- Housing & Transportation Theme Score
- Housing Composition & Disability Theme Score
- Minority Status & Language Theme Score
- SES Theme Score
- Total Score

What neighborhood(s) would you like to see?

No items highlighted

What part of the city would you like to see?

No items highlighted

This page shows the four themes that make up CDC's Social Vulnerability Index:

- Socioeconomic Status
- Housing Composition and Disability
- Minority Status and Language
- Housing and Transportation

The total score is the sum of these 4 themes.

Overall social vulnerability refers to the resilience of communities when faced with natural or human-caused disasters, or disease outbreaks like COVID-19.

CDC's Social Vulnerability Index ranks census tracts from across the country. Each tract receives a separate ranking for each of the four themes, as well as an overall ranking. Reducing social vulnerability overall can decrease both human suffering and economic loss.

Race and racism play a huge role in affecting vulnerability to COVID-19. For more information, read about our colleagues' Dr. Barber and Dr. Headen's work at <https://drexel.edu/uhc/resources/briefs/Covid-19%20in%20Context/>.

[Go back to Navigation Page](#)

Data Sources

All data besides neighborhood boundaries are from the American Community Survey (the U.S. Census).

All American Community Survey data are from the 2018 5-year estimate. The 5-year estimate averages data collected over a period of 5 years. The 2018 5-year estimate averages data collected between January 1, 2014 and December 31, 2018.

Neighborhood boundary information comes from the Azavea Philadelphia Neighborhoods dataset from OpenDataPhilly. Because census tract and neighborhood boundaries differ, census tracts and neighborhoods were overlaid in ArcGIS to calculate the percentage of a census tract which fell within a neighborhood. A census tract is included in a neighborhood (or neighborhoods) if at least 10% of the tract is within the neighborhood.

A tract's neighborhoods are listed in order of how much of the tract is in that neighborhood. For example, Census Tract 111's neighborhoods are listed as West Parkside, Carroll Park, Mill Creek. This means that the largest part of Census Tract 111 is in West Parkside, a smaller part of Census Tract 111 is in Carroll Park, and the smallest part of Census Tract 111 is in Mill Creek.

Some smaller neighborhoods were combined, based on historical commonalities and research on current neighborhood boundaries, to reduce the number of neighborhoods associated with individual census tracts.

[Go back to Navigation Page](#)

Key Terms

Indicator: an indicator is a data point that describes the condition of something.

Measure: a measure is the way data is presented (for example, as a number or as a percent).

Census tract: is a geographic area defined by the US census, that is much smaller than a zip code. In Philadelphia, a neighborhood is usually made up of 1-3 census tracts.

Vulnerability: is a condition of an area that means it is at a higher risk for a negative impact. This can be measured in many different ways. For this data tool, we started off with CDC's measurements and added what we wanted to know related to COVID-19 and Philadelphia's communities.

[Go back to Navigation Page](#)