

**DREXEL**

**STUDENT  
SUSTAINABILITY  
GUIDE**



# Drexel Land Acknowledgment

The land on which Drexel University stands and upon which we gather is part of the traditional territory of the Lenape called “Lenapehokink” (pronunciation: Lun-nah-pay-ho-king). It is here that the people called the ‘grandfather tribe’ and the ‘peacemakers’ have lived their lives, spoken their language, and held their ceremonies for thousands of years. Indeed, Lenape is translated as “real or original person.” During the colonial and early federal period, many were removed west and north, but some also remain in their homeland. The Lenape were subjected to 250 years of colonization that included cultural suppression and erasure, forced removal from this land and continue to experience systemic discrimination and marginalization.

Acknowledging this history, our privilege to be on this land, and the Lenape tribe’s continued presence, is consistent with Drexel University’s commitment to diversity, equity, and inclusion. We openly recognize the Lenape tribe as the original inhabitants of eastern Pennsylvania, as well as their continuing presence and relationship with their territory. We acknowledge the Lenape people as the Indigenous stewards of their homelands as well as the spiritual keepers of the Lenape Sipu, or Delaware River, and Drexel University does hereby commit to actively supporting our Lenape community members in whatever way we are able, helping to maintain the Indigenous cultural identity of Pennsylvania, Delaware, New Jersey and southern New York. We hope that, by recognizing this Indigenous history, it will inspire you to think about your place on this land, engage in efforts to promote a community that values work towards decolonization and strengthening of Indigenous communities, here and elsewhere.

"The land on which Drexel University stands is part of the traditional territory of the Lenni-Lenape, called "Lenapehoking," where the Lenape People lived for thousands of years. During the colonial and early federal period, many were removed from the land or subjected to colonization that included cultural suppression and erasure.

We openly recognize the Lenape Indian tribe as the original inhabitants of eastern Pennsylvania, as well as their continuing presence and relationship as stewards of the homelands. Drexel University does hereby commit to actively supporting our Lenape community members in whatever way we are able, helping to maintain the cultural identity of Indigenous people."



This acknowledgment marker is located between the Korman Center and Pearlstein Business Learning Center.

# Table of Contents

Meet the Climate and Sustainability Team.....	<a href="#">4</a>
Student Groups on Campus.....	<a href="#">5</a>
Undergraduate Student Government Association.....	<a href="#">6</a>
Sustainability Tracking Assessment and Rating System (STARS).....	<a href="#">7</a>
Climate Action Plan.....	<a href="#">8</a>
Research Opportunities.....	<a href="#">9</a>
Climate and Sustainability Coursework.....	<a href="#">10</a>
Dining.....	<a href="#">11</a>
Hydration Stations.....	<a href="#">12</a>
Recycling.....	<a href="#">13</a>
Reuse and Exchange Programs.....	<a href="#">14</a>
Campus and Landscaping.....	<a href="#">15</a>
Residence Hall.....	<a href="#">16</a>
Transportation.....	<a href="#">17</a>
Additional Resources for the Drexel Community .....	<a href="#">18</a>
The Environmental Collaboratory .....	<a href="#">19</a>
Academy of Natural Sciences of Drexel University .....	<a href="#">20</a>
Voting.....	<a href="#">21</a>
Contact.....	<a href="#">22</a>

# Meet The Climate & Sustainability Team

## Jennifer Britton



Jen has had several roles at Drexel since 2002, including managing the Drexel Engineering Cities research initiative and serving as the founding director of the Dornsife Center for Neighborhood Partnerships. She works on linking Drexel's sustainability agenda with the anchor mission to create local economic impact. With a background in STS – Science, Technology and Society – Jen has published about Drexel's civic engagement and anchor mission and she additionally pursues a human-animal studies research agenda focused on wild horses and burros. As a wild horse photographer in her free time, she lends her volunteer efforts to wild horse and burro advocacy, with the Assateague Island Alliance and the Wild Horse Photography Collective. Jen lives in Philadelphia's Fairmount neighborhood.

## Co-op and Work-Study Opportunities

The Climate and Sustainability Team hires a co-op student each cycle to work closely with them on developing Drexel's climate and sustainability strategy. Co-ops work on Drexel's annual STARS submission, support the Climate Action Plan Process, coordinate EcoReps meetings and activities, help with tabling at public events and programs, support their social media content, and more.

The team also has a number of work-study positions supporting EcoReps, the Climate Action Plan, and our STARS performance. It's a great opportunity to get paid to work on the sustainability issues that you feel passionate about!



Bo came to Drexel in 2014 after working at the University of Missouri, the University of Kansas and the University of Texas. He ran the Surplus Property program for the University of Missouri System. Bo operates Drexel's Surplus Property Program to sell, donate and divert equipment, furniture and other items that are no longer needed by Drexel from the waste stream. He oversees Drexel's annual reporting to AASHE STARS to track sustainability efforts on campus. He is treasurer of the University Surplus Property Association (USPA). He hires and supervises Climate & Sustainability co-op students, who help the team guide sustainability efforts on campus. He is married with three children and lives in South Philadelphia. He bikes, kayaks, tends to outdoor gardens and collects jukeboxes.

## Bo Solomon





# Student Groups On Campus

## EcoReps

EcoReps is a student group that collaborates with Drexel's Climate and Sustainability team to promote a more environmentally-friendly and climate-conscious university. The group organizes events and raises awareness about the importance of climate action and implementing sustainable practices within Drexel. They hold tabling events with Climate & Sustainability throughout the year and co-host events like the Tree of the Year pageant, a climate change songwriting contest, and clothing upcycling workshops.



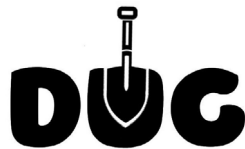
## Sierra Club

The Drexel Sierra Club is an environmentally-focused club that connects students through nature. Their mission reflects the nationally recognized Sierra Club's mission: to explore, enjoy, and protect wild places, promote responsible ecosystem use, and educate and engage in environmental protection. Some of their events include gardening days at the Summer-Winter Garden across from North Hall, on and off-campus cleanups, hikes, and environmental crafts!



## Drexel Urban Growers

Drexel Urban Growers is a student organization where members can gain experience in raising and maintaining vegetable garden beds, volunteer with local organizations in Philadelphia, engage with the local community, participate in community clean-ups, re-envision sustainable and local urban food systems, learn about and address food insecurity, and work towards food justice. Their community garden is located at the Dornsife Center on Spring Garden St.



## Weekend Warriors

Weekend Warriors is a student organization dedicated to providing the Drexel community with exciting opportunities to engage with the outdoor world. Their mission is to bring the outdoors to students that have never before realized the benefits that nature can bring. Their events include activities such as hiking, paintball, kayaking, and whitewater rafting!



## SHARP

SHARP is an organization that aims to raise awareness about water, sanitation, and hygiene (WASH) issues faced by marginalized populations locally and globally. SHARP provides a platform for students to brainstorm and design sustainable solutions for public health related issues.



## Sharing Excess

Sharing Excess is a student-powered movement to fight food insecurity both on campus and in the surrounding community. They partner with local restaurants to deliver excess food to hunger relief organizations and also operate Drexel's Guest Meal Swipe Donation program.



# USGA

## Undergraduate Student Government Association

### Buildings and Properties

The Buildings & Properties Committee focuses on the physical aspects of campus, concentrating on business services, campus safety, and sustainability. Their job is to bring student voices into decisions regarding these topics. This includes construction, renovations, maintenance, vending operations, dining services, and green spaces.

### Civic Engagement

The Civic Engagement Committee works to bridge connections between Drexel students and the broader West Philadelphia community on student education and involvement, sustainability, community engagement, and voter registration and resources. This is done through participation and collaboration with local neighborhood initiatives, expanding volunteer opportunities, and encouraging students to become active members of their community.

### Sustainability Subcommittee

The Sustainability Subcommittee focuses on ensuring environmental stewardship that aligns with Drexel's commitment to innovative and responsible practices. This is possible through the addition of green spaces, composting of organic waste, use of renewable energy on campus, promoting sustainable transportation, reducing water consumption, and increasing awareness and education on environmental issues within the university community.

### Current Initiatives

**Dining Hall Sustainability:** USGA's Buildings and Properties Chairs are engaging in conversations with Aramark and Drexel's Business Services staff to find ways to increase sustainability within dining halls.

**Neighborhood Trash Clean-Ups:** The Civic Engagement Committee organizes quarterly community clean-up events with Mantua Worldwide in the West Philadelphia neighborhood to foster community pride, promote environmental stewardship, and build stronger neighborhood connections.

**Lindy Scholars Program:** This fall term we will be partnering with the Lindy Scholars program to develop and lead a hands-on after school session focused on sustainability and public health with 15-20 middle schools students once a week for 90 minutes over six weeks.

# STARS

## Sustainability Tracking, Assessment and Rating System

STARS is a self-reporting program for colleges and universities to measure their sustainability performance. It measures efforts across a range of categories, from academic opportunities and resources in student life to governance and greenhouse gas emissions. Drexel is a member of the Association for the Advancement of Sustainability in Higher Education (AASHE) and participates in the annual STARS sustainability tracking system. The university is currently at a Silver rating with an identified pathway to achieving Gold within the next few years.



### Drexel's STARS Rankings Over the Years

2021: Bronze

2022: Bronze

2023: Silver



# Climate Action Plan

## Goal

Drexel's Climate Action Plan, currently in development, will be a roadmap for reductions in our greenhouse gas emissions across university functions, alongside a plan for boosting Drexel's institutional identity as a climate problem solver.

## Co-Chairs

The Co-chairs are the project sponsors and champions of the Climate Action Plan. These are the individuals that advocate for both the CAP development process and the final product with Drexel's leadership.

## CAP Task Force

The Climate Action Plan Task Force is charged with determining the parameters of the plan and the process, including which issues should be addressed in the plan, what values it will uphold, and the duration of the plan.

## Subcommittees

### Academics and Research

This subcommittee is considering how to support opportunities for teaching, research, and learning relevant to climate change.

### Campus Infrastructure

The Campus Infrastructure committee is tackling questions about how to reduce greenhouse gases in functions like our campus fleet, building design, and landscape management.

### Buildings and Energy

This subcommittee is addressing issues of campus energy consumption, identifying necessary building upgrades, opportunities for district energy, and energy sourcing and purchasing.

### Civic Engagement & Community Impact

Civic Engagement & Community Impact is focusing on connections with the community, local business and nonprofits.

### Business Practices

The Business Practices subcommittee is working on sustainability related issues regarding procurement, university transportation, waste management, single-use plastics, and dining.

### Institutional Culture

This subcommittee is developing a plan to improve climate literacy on campus, identify necessary administrative structures for climate and sustainability oversight, and develop an institutional climate identity.



# Research Opportunities

Dozens of Drexel professors and their teams of graduate and undergraduate students across the university are conducting research related to climate and sustainability, including renewable energy generation and storage, food systems, water resource management, transportation, policy, communications, and environmental justice. Find faculty and research opportunities of interest through department websites or ForagerOne.

## EXEL Magazine

EXEL Magazine is Drexel's research publication, showcasing current and past projects in science, technology, health, engineering, and design. It highlights work from faculty, students, and collaborators, demonstrating the progress and innovation happening across the university.

## ForagerOne

ForagerOne is a platform Drexel students can utilize to find research opportunities. The database allows you to search by Divisions and Departments and types of projects.

## Undergrad Research Mini Grants

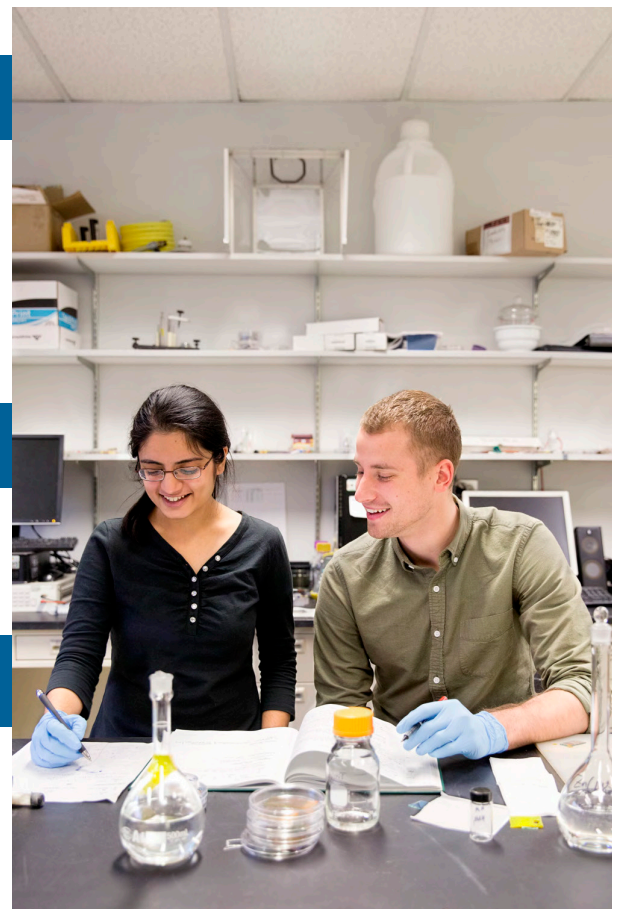
These grants are available for both faculty and student collaborators to further their work together. Any students that are actively working with faculty are eligible to apply. Applications open twice a year, in the fall and winter terms. For more information, click [here](#).

## Federal Work Study-Positions

For students eligible for federal work-study, visit [DrexelOne](#) to see open positions.

## STAR Scholars

The STAR (Students Tackling Advanced Research) Scholars Program is a research program for first year students to participate in faculty-led research projects during the summer after their first year of courses.



# Coursework

## Climate & Sustainability Related Majors

Environmental Science BS

Environmental Studies and Sustainability BA

Environmental Engineering BSENE

Sustainability and Innovation BS

## Climate & Sustainability Related Minors

Climate Change

Environmental Studies

Environmental Sociology

Environmental Public Health

Environmental Engineering

Green Energy and Sustainability

Science, Technology, and Society

Sustainability in the Built Environment

## Students' Favorite Climate & Sustainability Courses

*These are some students' favorite climate and sustainability related courses outside the BEES department.*

CHE-381 Solutions to Climate Change  
with Jason Baxter

COM-317 Environmental Communication  
with Elizabeth Kaminsky

FASH-200 Sustainable Practice in Fashion  
with Ali Howell Abolo

PHIL-340 Environmental Ethics  
with Eric Fleming

PSCI-338 Cities and Climate Change  
with Ali Kenner

PSY-352 Psychology of Sustainability  
with Ludo Scheffer





# Dining

Dining halls have the potential to be incredibly wasteful. One third of all food produced in the world goes to waste. Both food waste as well as food choices can generate substantial greenhouse gas emissions. Drexel is conscious of this and constantly working to make our dining halls more climate and sustainability friendly.

## Biodigester

In 2023, the Handschumacher Dining Center acquired an Orca Biodigester. A biodigester is a machine that utilizes microorganisms in the presence of oxygen to break down organic waste material. It's an environmentally-friendly approach to disposing of food waste. Currently, it is only used to break down pre-consumer waste: food that wasn't eaten by the end of the day as well as some scraps from food prep.



In 11 months, the biodigester has diverted **8,495.00 lbs** of food waste from the landfill.

This is the equivalent to **2.2 tons of CO<sub>2</sub>-eq** emissions that would have been released if the food instead ended up in a landfill.

## Composting

Beginning in fall 2024, Drexel dining halls will be piloting a composting program with Circle Compost. This is a big step towards reducing the amount of organic waste that is sent to the landfill from dining halls, as well as lessening Drexel's carbon footprint. Both front- and back-of-house food waste will be able to be composted.

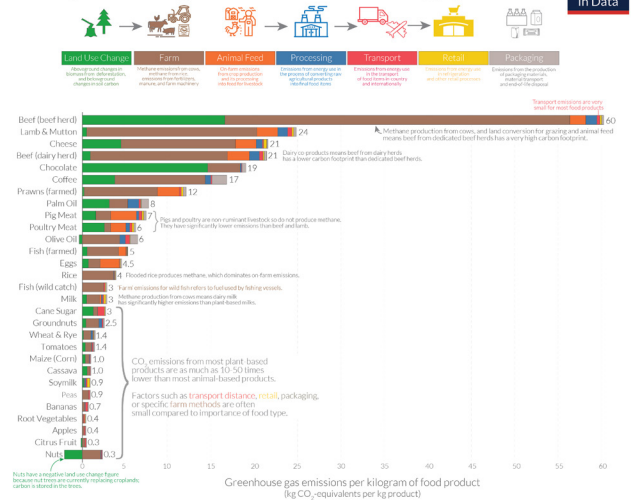
Circle Compost is a local, women-owned company that utilizes the food scraps to create organic compost for Philly's urban farmers and gardeners.

## Plant-Based Foods

From 2020 to 2023, Drexel Dining increased plant-based food purchases by **237%**

UC Veg is the vegan and vegetarian station in Urban Eatery. It was recently renovated and expanded in the summer of 2024 to accommodate the greater demand for plant-based options. The [graph](#) on the right demonstrates the great discrepancies between different food choices and their associated greenhouse gas emissions.

Food: greenhouse gas emissions across the supply chain



## Meal Swipe Donation Program

In 2019, Sharing Excess and Drexel Dining worked together to create a program for students to donate guest meal swipes to students in need. It can be done via the DragonCard portal.

Since its inception in 2019, **400** Drexel students have been provided with meals.

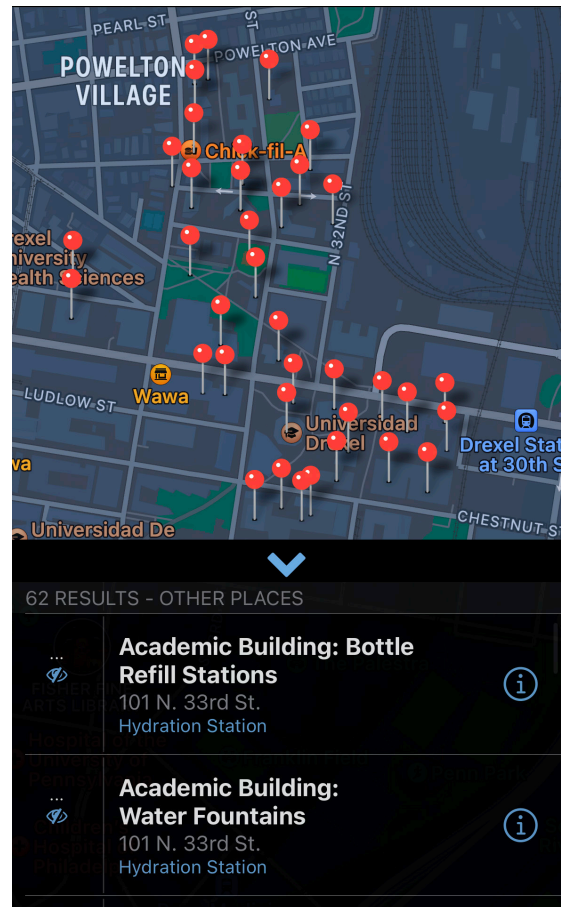
# Hydration Stations

Drexel encourages faculty and staff to drink filtered fountain water rather than purchasing water that is sold in single-use plastic bottles. Philadelphia’s tap water is also safe to drink and is another free alternative to purchasing bottled water. There is a water map available on the DrexelOne mobile app that pinpoints every hydration station on campus.

To access the map, log in to the app, open the navigation menu on the left, select “Other Places” from the “FIND” menu, select the three-dot icon from the bottom-right corner, and make sure only “Hydration Station” and “University City” are selected.



Bottle refill stations on campus save the equivalent of over **300,000** plastic water bottles every year.



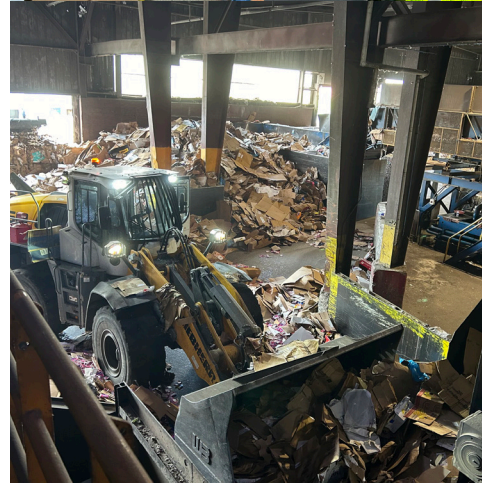
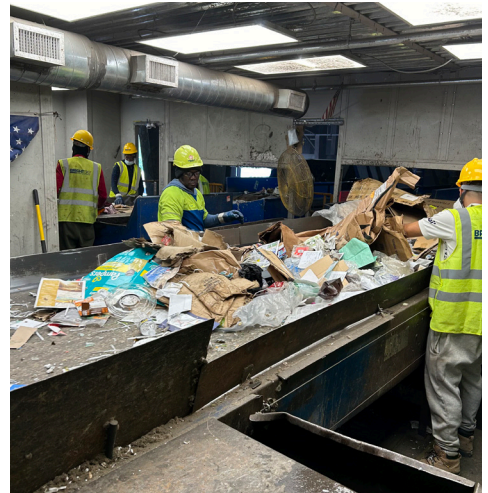
This saves an estimated **\$800,000** that would be spent on plastic water bottles.





# Recycling

Recycling is a top sustainability concern for students and faculty. Many feel that there aren't clearly designated trash and recycling receptacles on campus or have concerns regarding the proper sorting of recyclable waste. To learn more about what happens to Drexel's recycling after it leaves the university, the Climate & Sustainability Team visited Republic Services recycling processing facility. They took a tour of the facility and talked with Republic staff about best practices for recycling, and about what happens to our waste once it is picked up. The team is using this information to improve how Drexel recycles.



## Don't Wreck The Recycling

The Basics of Recycling on Drexel's Campus

<p>plastic bags</p> 	<p>coffee cups</p> 	<p>aluminum cans</p> 	<p>cardboard</p> 
	<p>food packaging</p> 	<p>paper</p> 	<p>plastic bottles</p> 
<p>styrofoam</p>		<p>glass</p> 	
<p>materials contaminated with food</p>	<p>utensils</p> 	<p>** everything must be cleaned and rinsed **</p>	
<h3>Trash/Landfill</h3>		<h3>Recycling</h3>	

# Surplus Property Program

Drexel has a [Surplus Property Program](#) that departments can use to sell items they no longer need. This generates funding for the department and allows buyers to reuse excess Drexel material while keeping most items from going to the landfill. It is a program created to increase the circularity of goods.



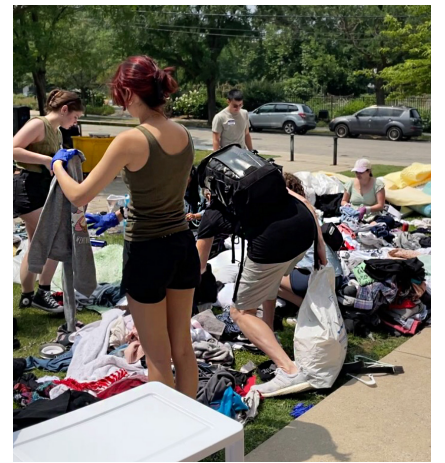
Drexel's [Buy Nothing Depot](#) is a free supply exchange program for the Drexel community with the goal of diverting still useful office supplies from the landfill. Students and employees can take anything they want from the depot for work, school, or personal use. We also accept donations: gently used clothing, school supplies, and household goods.



# Buy Nothing Depot

# Too Good To Toss

[Too Good to Toss](#) is a recycling effort held each spring to divert clothing and other dorm room items like bedding from the landfill. Collection begins in the dorms in May and at the end of move-out week all donated items are offered to students and neighbors to take for free. The program connects with Goodwill Industries and local animal shelters to donate excess items.



# Electronics Recycling

Drexel holds an annual event in conjunction with Campus Race to Zero Waste to collect recyclable and no-longer-useful electronics from Drexel departments and offices. This recycling event keeps recyclable items from the landfill and helps us avoid disposal costs. Electronics collections take place in University City, New College Building at Center City, and at Queen Lane in March of each year.



# Campus Grounds and Landscaping

## Organic Greenspace Management

In 2024, Drexel discontinued the use of synthetic pesticides and herbicides and transitioned to all-organic landscape management. These efforts were championed by Toxic Free Philly Drexel, a student group on campus that advocated for the mitigation of toxic synthetic herbicide usage on campus. Utilizing Drexel Park as a pilot location the year prior, they were able to demonstrate that the grass was healthier and required less maintenance than other greenspaces on campus.

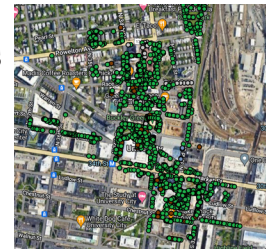
## Stratton Greenhouse

Located on the third floor of Stratton Hall, Drexel has a rooftop greenhouse available for students, faculty, and staff to use for their own gardening projects. Space is fairly limited though, so reach out to [greenhouse@drexel.edu](mailto:greenhouse@drexel.edu) if you're interested in securing a spot. All students and faculty have access to the greenhouse during regular 9-5 business hours and can use the space to study or spend time.



## ArborPro

Drexel has a tree inventory that highlights every tree on campus. This [ArborPro map](#) shows what our urban tree canopy looks like.



## Green Roof

Drexel has three green roofs located at Millennium Hall, Gerri C. Lebow Hall, and at the Queens Lane campus. Lebow is home to the largest green roof on campus which was established over 10 years ago and is covered in a variety of sedum succulents. Green roof benefits are substantial and include reducing the stormwater runoff that hurts our river water quality and cooling building roof temperatures.



## Electric Grounds Vehicles

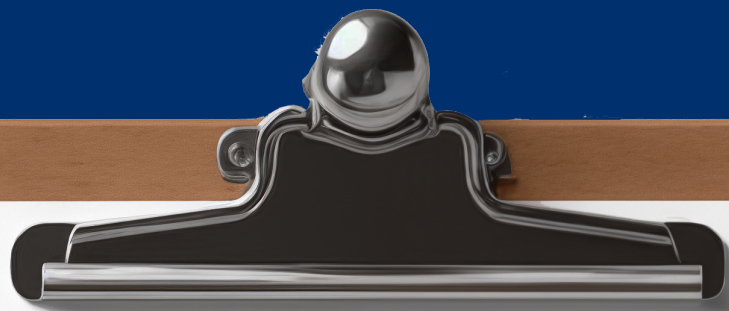
The Grounds team understands the environmental benefits of electric vehicles and have invested in their first electric Club Car to replace a gas engine John Deere gator. The vehicle is used to patrol campus for things like weeds, litter and graffiti to maintain the cleanliness of our campus.

## Sustainable Water Usage and Irrigation

Drexel uses a rain sensor system that stops programmed watering cycles if a moisture threshold has been reached at the sensor. This prevents overwatering of our lawns and reduces campus water usage.







## Our Tips for Living Sustainably in Drexel's Residence Halls

- Choose plant-based or meatless options in the dining halls.
- Only take the food you will eat when at the dining halls to reduce your food waste.
- Turn off lights when leaving your dorm.
- Unplug appliances when leaving for the weekend or holiday breaks.
- Keep a recycle bin in your dorm to sort trash and recyclables.
- Use reusable plates, bowls, utensils, and cups in your dorm.
- Use a reusable water bottle and refill it at one of the hydration station locations on campus or from the tap.
- Take shorter showers to reduce water consumption.
- Walk, bike, or take public transportation to get around the city.
- Utilize a drying rack in place of a dryer to reduce energy consumption.





# Transportation

Philadelphia is an very walkable city. For greater distances, biking and taking public transportation are popular alternatives. Philadelphia is home to the 6th largest mass transit system in the United States.

## Biking

Indego is a popular bike share program in the city. There are bike racks around campus, and for only \$4 a month, you can purchase unlimited 60-minute rides with Indego.

There are 8 different Indego stations located around campus, so you will never have to go far to find a bike. There are both electric and non-electric bike options at most stations.



SEPTA states that public transit commuters have

# 1/3

the commuting carbon footprint as those who travel by car



## SEPTA

Septa is Philadelphia's public transit system and includes a subway, buses, trolleys, and regional rail. There are stops for each of these transit modes on or near campus. Click [here](#) to view the SEPTA transit map.

All full-time Drexel students are able to get a 10% discount on monthly SEPTA TransPasses and TrailPasses. They can be loaded onto your SEPTA Key card via [DrexelOne](#).

## NJ Transit

Full-time students have access to 25% discounts on NJ Transit rail, bus, or light rail monthly passes.

## Drexel Shuttle Buses

Drexel University provides free shuttle bus transportation for students, faculty, and staff, connecting the University City, Center City, and Queen Lane campuses. To view the bus schedules, students can download the Drexel Transit app or visit the Drexel website for details.



# Mario's Market

Mario's Market is a food pantry for students who may be experiencing food insecurity. It is operated and managed by Drexel's Student Center for Diversity and Inclusion and is located on the 2nd floor of the Rush Building. Visit [SCDI on Instagram](#) to view the current hours.



If you are in need of meal assistance, email [feedadragon@drexel.edu](mailto:feedadragon@drexel.edu)

Free Dining Swipes

# Additional Resources for the Drexel Community

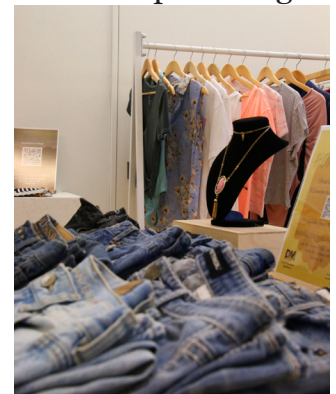
Drexel's Dornsife Center hosts a free community dinner on the second Tuesday of every month at 6pm. It's a great opportunity for Drexel students to meet and share a meal with their West Philadelphia neighbors.



Dornsife Monthly Community Dinner

## Drexel Thrift Store: Reworn

Reworn is a thrift store run by Fashion Industry and Merchandising students. It was created to maximize the value of the clothing we have in our community, create a circular textile system for the Drexel community and eliminate textile waste from entering the landfill while providing a real-life merchandising experience to our students. Students can shop Reworn in the URBN Center Lobby (room 109) Monday-Thursday from 9am-4pm. At this time, students must have access to the URBN Center to access the shop.





# Environmental Collaboratory

As part of the Drexel 2030 Strategic Plan, the Environmental Collaboratory, situated in the Office of the Provost, utilizes a community-centered approach to addressing climate and environmental justice. The Environmental Collaboratory seeks to co-fund, co-design, and co-implement climate justice solutions with community partners that are grounded in addressing systemic, environmental, and socio-economic justice. The Environmental Collaboratory seeks to drive solutions through new models and innovative approaches to often-disparate fields such as financing, entrepreneurship, engineering, business, law, policy, public health, medicine, data and information technology, history, infrastructure design and management, and civil and human rights, along with environmental fields. Emphasizing collaboration between faculty, staff, students, industry partners, and the public sector, the Collaboratory aims to develop community-based solutions.

## Climate Hub Grant Program

The Environmental Collaboratory's Climate Hub Grant Program supports ideation and collaboration around project ideas aimed at strengthening Drexel's commitment to sustainability and climate resilience, creating new connections across academic and administrative units, and incorporating community knowledge and expertise with the potential to scale at levels meaningful to Drexel's 2030 Strategic Plan.

### Grant Projects:

Drexel University Climate Pedagogy Incubator for Community-Based Learning

Philadelphia 2.0: Community-Driven Visioning for the Future Climate

Curriculum for Sustainable Food Systems Innovation

Climate Hub Student Project Fund

## Opportunities for Students

### Climate Hub Student Project Fund

The Collaboratory recently created the Climate Hub Student Project Fund that provides grants for students to further a community-oriented project within the climate sphere. Over a one-year funding period, student projects have the potential to receive up to \$5000 in funding.

#### *Awarded Projects*

Toxic Free Philly

Sustainable Fashion Center/Drexel Thrift

A Student-Led Film Festival Confronting Water Crisis due to Climate Change

Mantua Urban Peace Garden Solar Power System

Creating a Holistic Curricula Understanding Climate Change Impacts in Philadelphia

### Nina Henderson Provost Scholars

The Nina Henderson Provost Scholars Program is an annual scholarship program of 12 students that work with the Office of the Provost to develop and uphold the goals of the Drexel 2030 Strategic plan. TEC's talented NHPS are developing university-wide recommendations related to workforce development and civic engagement in the climate and sustainability space.

### Environmental Justice Co-op

The Environmental Collaboratory will be joined by their third EJ Co-op in the Fall of 2024. TEC's EJ Co-ops have contributed to the development of residential energy education materials that are being used by a cohort of municipalities to help residents access income-based rebates under the Inflation Reduction Act as well as contributing to the Philadelphia Climate Justice Collective and related community-centered forums and publications.

### Local Conference of Youth

The Environmental Collaboratory supported the first Local Conference of Youth hosted at Drexel in September 2022. The conference is part of the United Nations Framework Convention on Climate Change and focuses on themes of climate empowerment, climate adaptation, climate justice, food systems, and health and climate change.

# The Academy of Natural Sciences of Drexel University

The Academy of Natural Sciences of Drexel University (ANS) was founded in 1812 “for the encouragement and cultivation of the sciences, and the advancement of useful learning.” The unique aspect of this statement of purpose lies in the word “useful,” a mandate the Academy has continuously redefined through research and education that reflects the needs of the times. ANS is on a mission to understand the natural world and inspire everyone to care about it, to be a “Force for Nature.” It houses over 18 million specimens and archival works from naturalists including those that predate the academy’s founding like Thomas Jefferson, John James Audubon, and Lewis & Clark. Drexel students have free entry to the museum with their DragonCard, and it’s accessible via the Dragon shuttle through the Dragon Route Loop.

## Plastic Free Philly

Plastic Free Philly is an effort led by the Academy to encourage a reduction in single-use plastic usage. Plastic pollution is a major issue in Philadelphia. Plastic waste made up 56% of the trash removed by the Philadelphia Water Department from the Schuylkill and Delaware rivers. These bodies of water are part of the Delaware River watershed and provide drinking water to over 15 million people.

## Patrick Center for Environmental Research

The Academy’s Patrick Center for Environmental Research has been devoted to understanding, protecting, and restoring the health of watersheds since 1947. It consists of a multidisciplinary group of environmental scientists and engineers focused on understanding aquatic and terrestrial ecosystems and applying this knowledge to assess ecosystem health and develop watershed-level strategies for enhancing environmental quality. The Patrick Center also works with diverse stakeholders, including government, community groups, industry, and environmental organizations to improve environmental stewardship.

## Student Opportunities

### Co-ops

The Academy has a variety of co-op positions available for students each co-op term. For more information, you can visit the ES&P archives.

### Volunteering

The Academy has a variety of volunteer opportunities for students: live animal center, outside/in exhibit, collections assistants, mediated experiences, and special events volunteers.

### Research Internships and Jobs

To learn more about the current internships and jobs available at the Academy, visit their website.

## Register to Vote

As a student, you are able to register to vote with your school address or your home address.

If you want to register to vote in Pennsylvania, visit [PA Voter Services](#).

To register to vote in your home state, visit [vote.gov](#)

Every state has its own voter registration deadline, click [here](#) to find your states.

In PA, October 21, 2024 is the last day to register to vote for the 2024 Presidential Election.

If you have any questions, call 1.877.VOTESPA (1-877-868-3772)

## Update Voter Registration

If you are already registered to vote but need to update registration information like home address, visit [Vote.gov](#).

To check your voter registration status, click [here](#).

## Register to Vote Absentee or Vote-by-Mail

Any registered voter can request a mail-in ballot. You do not need to provide a reason.

If you will be outside of the municipality in which you are registered to vote or if you have a disability or illness that prevents you from going to your polling place on Election Day, you can request a absentee ballot type. It does require you to provide a reason for the request.

Visit [Can I Vote](#) to determine if you are able to vote absentee or by mail in your home state.

In Pennsylvania, registered voters can request both [no-excuse mail-in ballots](#) or [absentee ballot](#).

## Election Day

Polling hours vary from state to state. Check [here](#) to confirm the opening and closing times of the polls.

If you are unsure of your polling location, click [here](#).

# Voting

# Sustainability News



The Climate & Sustainability website hosts news about sustainability-related projects and events on campus.

If you have a news story or update about an event or program, we would love to post it to our new section or social media pages. Email [sustainability@drexel.edu](mailto:sustainability@drexel.edu) with your news blurb.

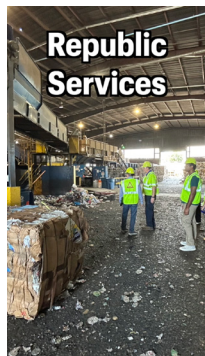
## Questions?

If you have any questions regarding the Student Sustainability Guide or general climate and sustainability topics at Drexel, email [sustainability@drexel.edu](mailto:sustainability@drexel.edu)

If you're interested in joining Drexel's Climate & Sustainability email list for related events and opportunities, send a request to [sustainability@drexel.edu](mailto:sustainability@drexel.edu)

## Social Media

Follow [@sustainabledrexel](https://www.instagram.com/sustainabledrexel) on Instagram and TikTok to stay updated on the current projects and events the Climate & Sustainability team and EcoReps are working on!



## Climate Action Resources

[NASA: Climate Change](#)

[United Nations: Climate Action](#)

[Project Drawdown: Climate Solutions](#)

