

2017

Drexel University School of Education's IMPACT

ON EDUCATION IN PHILADELPHIA



**Drexel Dragons
are Teaching in
Many Philadelphia
Public Schools**

91

2016-2017
SCHOOLS SUPPORTED
BY DREXEL STUDENT
TEACHERS

146

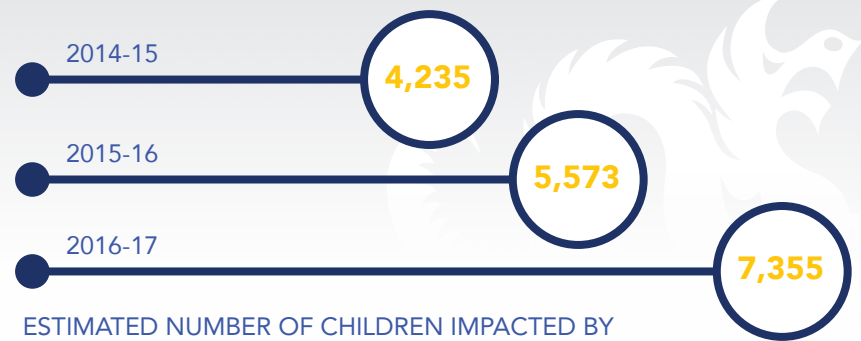
Last 5 years
SCHOOLS SUPPORTED
BY DREXEL STUDENT
TEACHERS

SNAPSHOT OF SCHOOLS SERVED BY DREXEL

- ▶ Albert M. Greenfield Elementary School
- ▶ Anthony J. Infante School
- ▶ Freire Charter School
- ▶ Samuel Powel Elementary School
- ▶ The Parent & Infant Center
- ▶ Central High School



**Drexel Undergraduate Students
Taking Courses Toward Becoming Teachers**



ESTIMATED NUMBER OF CHILDREN IMPACTED BY
DREXEL UNIVERSITY PRE-SERVICE TEACHERS

**DREXEL UNIVERSITY SCHOOL
OF EDUCATION'S SCHOOL
WORK STUDIO PROVIDES
DIRECT SUPPORT TO SEVEN
PHILADELPHIA SCHOOLS**

- 1 Alain Locke Elementary School
- 2 Belmont Charter School
- 3 Martha Washington School
- 4 Morton McMichael School
- 5 Samuel Powel Elementary School
- 6 Science Leadership Academy Middle School
- 7 West Philadelphia High School

EDUCATION PARTNERS

- ▶ National Center for Teacher Residencies
- ▶ TeachingWorks
- ▶ The New Teacher Project
- ▶ 100Kin10
- ▶ U.S. Department of Education
- ▶ School District of Philadelphia
- ▶ National Science Foundation
- ▶ Peco/Exelon
- ▶ Philadelphia School Partnership
- ▶ Steppingstone Scholars

FAST FACTS

ABOUT THE
SCHOOL OF EDUCATION



1,136
STUDENTS



41
DEGREE &
CERTIFICATION
PROGRAMS



47
FULL-TIME FACULTY



31
ADMINISTRATIVE
& ADVISING STAFF

PHILADELPHIA TEACHER RESIDENCY PROGRAM PREPARES SUCCESSFUL TEACHERS FOR PHILADELPHIA SCHOOLS

- 87%** | OF STUDENT TEACHERS COMPLETE THEIR RESIDENCY YEAR
- 88%** | OF TEACHER RESIDENCY GRADUATES TEACH IN PHILADELPHIA SCHOOLS
- 22%** | HAVE ACCEPTED ADDITIONAL LEADERSHIP POSITIONS IN THEIR SCHOOLS
- 100%** | BELIEVE THEY ARE READY TO TEACH AFTER THEIR RESIDENCY

WHAT IS THE PHILADELPHIA TEACHER RESIDENCY PROGRAM?

The Philadelphia Teacher Residency Program (PTR) is an accelerated teacher education program that prepares students to be successful teachers by pairing students with mentor teachers for a full year. The program has resulted in a 100% placement rate in Philadelphia schools for students who completed the program.



PTR (My teacher preparation program at Drexel) really helped me understand why I wanted to teach, which is to give the students everything I have to offer so that they might succeed.

EUAL PHILLIPS

*Philadelphia Teacher Residency Program Completer, 2014-15
Science Teacher (Hill-Freedman World Academy)*

Drexel prepared me for teaching by placing us in the classroom for field experience starting in freshman year. My experience observing veteran teachers and working in many different school helped prepare me for the many situations I encounter as a teacher.

STEPHANIE ZEITZ

*Drexel 2014
Teacher, Young Scholars Charter School*

The unique community of young educators, mentor teachers, site directors, facilitators, and professors created by the PTR program (Drexel program) has been invaluable to my first year teaching and I believe it is the most important asset to the program.

ETHAN RIOUX

*Philadelphia Teacher Woodrow Wilson MS
Reflection on his Residency Program*



44,920

HOURS OF LEARNING
FOR PHILADELPHIA CHILDREN

DREXEL MATH COACHES MAKING A DIFFERENCE FOR PARTNERSHIP SCHOOLS

Through a generous donation, Drexel University School of Education provides a math coach for Samuel Powel Elementary School and Morton McMichael School

	2016	2017
3 RD GRADE	41.9%	63.2%
4 TH GRADE	38.7%	45.6%
5 TH GRADE	41.1%	57.8%

*McMichael School Sees
Big Gains on State Test Scores
Thanks to New Math Coach*



50

TEACHERS
EARNING SPECIAL EDUCATION
LEADERSHIP CERTIFICATION

*Through the Philadelphia
Special Education Leaders of
Tomorrow Program*



DREXEL UNIVERSITY
School of
Education