

Publications

- Aaron, E., Criniti, S. M., **Bonacquisti, A.**, & Geller, P. A. (in press). Providing sensitive care for adult HIV-infected women with a history of childhood sexual abuse. *Journal of the Association of Nurses in AIDS Care*.
- Bonacquisti, A.**, & Geller, P. A. (in press). Condom use intentions and the influence of partner-related barriers among women at risk for HIV. *Journal of Clinical Nursing*.
- Brooks Holliday, S.**, Heilbrun, K., & Fretz, R. (2012). Examining improvements in criminogenic needs: The risk reduction potential of a structured reentry program. *Behavioral Sciences and the Law*, 30, 431-447.
- DeMatteo, D., & **Davis, J. P.** (In press). Mental health courts. Chapter to appear in Cautin, R., & Lilienfeld, S. (Eds.), *The Encyclopedia of Clinical Psychology*. Wiley-Blackwell.
- DeMatteo, D., **Filone, S.**, & **Davis, J. P.** (In press). Substance Abuse and Crime. Chapter to appear in Culter, B., & Zapf, P. (Eds.), *APA Handbook of Forensic Psychology*. Washington, D.C.: American Psychology Association.
- DeMatteo, D., **LaDuke, C.**, **Locklair, B.**, & Heilbrun, K. (2012). Community-based alternatives for justice-involved individuals with severe mental illness: Diversion, problem-solving courts, and reentry. *Journal of Criminal Justice*. <http://dx.doi.org/10.1016/j.jcrimjus.2012.09.002>
- Hildenbrand, A. K.**, Daly, B. P., **Nicholls, E.**, **Brooks Holliday, S.**, & Kloss, J. D. (in press). Increased risk for school violence-related behaviors among adolescents with insufficient sleep. *Journal of School Health*.
- Martin, L. M.**, Plumb-Villardaga, J. C., **Timko, C. A.** (2012). Examining the relationships amongst varieties of interpersonal valuing and mindfulness processes in eating pathology. *Mindfulness*, 1-13. doi: 10.1007/s12671-012-0156-8.
- Nezu, C. M., Lee, M., & **Ricelli, S.** (2012). Complementary and alternative therapies. In I. B. Weiner (Series Ed.), A. M. Nezu, C. M. Nezu, & P. A. Geller (Vol. Eds.), *Handbook of psychology: Vol. 9. Health psychology* (2nd ed.). Hoboken, NJ: John Wiley & Sons.
- Nicholls, E.**, **Hildenbrand, A. K.**, **Aggarwal, R.**, McCarthy, L., & Daly, B. P. (2012). The use of stimulant medication to treat neurocognitive deficits in patients with pediatric cancer, traumatic brain injury, and sickle cell disease: A review. *Postgraduate Medicine*, 124(5), 78-90.
- Shah, S.**, DeMatteo, D., **Keesler, M.**, **Davis, J. P.**, & Heilbrun, K. (In press). Addiction Severity Index scores and urine drug screens at baseline as predictors of graduation from drug court. *Crime & Delinquency*.
- Witt, A. A.**, Katterman, S. N., & Lowe, M. R. (In press). Assessing the three types of dieting in the three-factor model of dieting: The Dieting and Weight History Questionnaire. *Appetite*.



Recent Presentations

- Aggarwal, R., Nicholls, E., Brooks-Holliday, S., & Daly, B. P.** (2012, August). *Insufficient sleep, weight perceptions, and unhealthy weight management practices in adolescents*. Poster presented at the 120th Annual Convention of the American Psychological Association, Orlando, FL.
- Berkowitz, S. A., Herzog, D. B., Swanson, S. A., Eddy, K. T., Franko, D. L., Berner, L. A., Witt, A. A., Krishna, M., Davis, M. & Lowe, M. R.** (2012, November). *Weight Suppression Predicts Time to Remission from Anorexia Nervosa*. Poster presented at the 46th Annual Convention of the Association for Behavioral and Cognitive Therapies, National Harbor, MD.
- Berner, L. A., Izzetoglu, M., Ayaz, H., Shewokis, P. A., Matteucci, A. J., & Lowe, M. R.** (2012, November). *Prefrontal neural activity during eating response inhibition: Preliminary functional near-infrared spectroscopy results and applications for eating and weight disorders*. Poster presented at the 46th Annual Convention of the Association for Behavioral and Cognitive Therapies, National Harbor, MD.
- Berner, L. A., Izzetoglu, M., Ayaz, H., Shewokis, P. A., Matteucci, A. J., & Lowe, M. R.** (2012, September). *Development of a go/no-go paradigm to study eating-specific self-regulatory control and neural activity in bulimia nervosa*. Poster presented at the annual meeting of the Eating Disorders Research Society, Porto, Portugal.
- Berner, L. A., Shaw, J. A., Witt, A. A., Bunnell, D. & Lowe, M. R.** (2012, November). *Weight suppression in anorexia nervosa: A preliminary investigation of clinical significance*. Poster presented at the 46th Annual Convention of the Association for Behavioral and Cognitive Therapies, National Harbor, MD.
- Bonacquisti, A., Geller, P. A., & Patterson, C. A.** (2012, August). *Addressing parental stress in a neonatal intensive care unit*. Poster presented at the 120th Annual Convention of the American Psychological Association, Orlando, FL.
- Bradley, L. E., Forman, E. F., & Butryn, M. L.** (2012, September). *Long-term weight control strategies and their association with weight maintenance in a behavioral weight loss program*. Poster presented at the 30th Obesity Society Annual Scientific Meeting, San Antonio, TX.
- Brinckman, D., Schultheis, M., Ehrhart, L. Weisser, V., Medaglia, J., & Merzagora, A.** *Demonstration of diurnal patterns of brain activity using fNIRS*. (2012, November). Poster presented at the 2012 conference of the National Academy of Neuropsychology, Nashville, TN.
- Criniti, S. M., Bonacquisti, A. & Aaron, E.** (2012, October). *Partner support and stable housing predict contraceptive use in a cohort of women with HIV*. Poster presented at the 2012 North American Forum on Family Planning, Denver, CO.
- Davis, J. P.** (2012, August). *Weighing the evidence: Legal implications of the alleged CSI effect*. Poster presented at the 120th Annual Convention of the American Psychological Association, Orlando, FL.
- Eichenbaum, E., Khaksari, M., & Geller, P.A.** (2012, August). *An examination of African American and white women's religious coping behaviors following pregnancy loss*. Poster presented at the 120th Annual Convention of the American Psychological Association, Orlando, FL.
- Geller, P. A., Patterson, C. A., Bonacquisti, A., Eichenbaum, E., & Khaksari, M.** (2012, August). *Development and pilot test of the "N/IICU Survival Guide" program for parents with infants in the NICU*. In S. Lassen (Chair), *Assessment and interventions with family and staff in the Neonatal Intensive Care Unit*. Symposium presented at the 120th Annual Convention of the American Psychological Association, Orlando, FL.
- Goldstein, S. P., Glassman, L. H., Martin, L. M., Bradley, L. B., Ibrahim, A., Herbert, J. D., & Forman, E. M.** (2012, September). *The relationship between distress tolerance and disordered eating related constructs*. Poster presented at the 30th Obesity Society Annual Scientific Meeting, San Antonio, TX.
- Hildenbrand, A. K., Kassam-Adams, N., Kohser, K. L., Kenardy, J., March, S., Winston, F. K., & Marsac, M. L.** (2012, November). *Integrating theory and evidence to develop an innovative web-based intervention for children*. Poster presented at the International Society for Traumatic Stress Studies 28th Annual Meeting, Los Angeles, CA.

Recent Presentations, Continued

- Hildenbrand, A. K., Nicholls, E. G.,** Brown, R. T., Kral, M., & Daly, B. P. (2012, October). *Executive Function and Attention in Children with Sickle Cell Disease: Comparing Cerebrovascular Accident and Elevated TCD*. Poster presented at the National Conference in Clinical Child and Adolescent Psychology, Lawrence, KS.
- Hildenbrand, A. K., Nicholls, E. G.,** Pfeiffer, B., & Daly, B. P. (2012, October). *Sensory Processing Dysfunction in Children with ADHD*. Poster presented at the National Conference in Clinical Child and Adolescent Psychology, Lawrence, KS.
- Ibrahim, A.** (2012, October). *A proposed mixed methods analysis of Iraqi refugees with trauma histories*. Poster presented at the 2nd Annual Diversity Forum, La Salle University, Philadelphia, PA.
- Keppler-Noreuil, K. M., **Brinckman, D.,** Wiggs, E., Blumhorst, C., Sapp, J. C., Johnston, J., Nopoulos, P. C., & Biesecker, L. G. (2012, August). *Brain abnormalities on volumetric MRI scans in 21 patients with Bardet-Biedl syndrome (BBS) correlate with neurodevelopmental findings*. Platform Presentation, David W. Smith Workshop on Malformations and Morphogenesis meeting, Lake Arrowhead, CA. Proceedings of the Greenwood Genetic Center.
- Khaksari, M.,** & Geller, P. A. (2012, October). *Perceived barriers to use of infertility treatment by minority women*. Poster presented at the 2nd Annual Diversity Forum, La Salle University, Philadelphia, PA.
- Kloss, J. D., **Culnan, E., & Zamzow, J. A.** (2012, August). *College Student Health. Translating Research in Chronobiology and Sleep into Practical Applications*. Philadelphia, PA.
- LaDuke, C.,** DeMatteo, D., Heilbrun, K., & Swirsky-Sacchetti, T. (2012, November). *Is forensic neuropsychology different? A discussion for practitioners and field leaders*. Poster presented at the 32nd Annual Conference of the National Academy of Neuropsychology, Nashville, Tennessee.
- Makwana, B., **Tart-Zelvin, A.,** Pollak, A., & Williams, J.M. (2012, August). *Effects of music and gender on cognitive performance*. Poster presented at the Students Tackling Advanced Research (STAR) 10th Annual Summer Showcase, Philadelphia, PA.
- Martin, L. M.** (2012, December). *Behavior Modification for Obesity in a Primary Care Setting*. Invited talk presented to Drexel Family Medicine, Philadelphia, PA.
- Martin, L. M.** (2012, July). *ACT for Disordered Eating: Recent Findings*. Symposium presented at the 10th annual world meeting of the Association for Contextual Behavioral Science, Washington, D.C. Presented by Masuda, A.
- Martin, L. M.** (2012, July). *Are Anxiety Treatments Focusing on the Wrong Outcomes?* Symposium presented at the 10th annual world meeting of the Association for Contextual Behavioral Science, Washington, D.C. Presented by Glassman, L. H.
- Martin, L. M.** (2012, July). *The Role of ACT in Battling the Obesity Epidemic: Current Research and Future Directions*. Symposium presented at the 10th annual world meeting of the Association for Contextual Behavioral Science, Washington, D.C. Presented by Hooper, N.
- McGrath, M. C. Irani, F., Rodriguez Merzagora, A. C., **Brinckman, D.,** & Schultheis, M. T. (2012, October). *Examining Resting State Functional Activity in the Medial Prefrontal Cortex Using fNIRS: A "Proof-of-Concept" Study*. Poster presented at the 2012 conference of Functional Near Infrared Spectroscopy, London, UK.
- Murphy, M., & Strohmaier, H.** (2012, August). *Perceptions of negative consequences of youth sexting*. Poster presented at the 120th Annual Convention of the American Psychological Association, Orlando, FL.
- Nicholls, E., Aggarwal, R.,** & Daly, B. P. (2012, October). *Collaborative teacher training for promoting social, emotional, and behavioral health in urban preschool students*. Poster presented at the 17th Annual Conference on Advancing School Mental Health, Salt Lake City, UT.
- Nicholls, E., Aggarwal, R., Brooks-Holliday, S.,** & Daly, B. P. (2012, August). *Relationships between insufficient sleep, intimate partner violence, and rape among a national sample of adolescents*. Poster presented at the 120th Annual Convention of the American Psychological Association, Orlando, FL.

Recent Presentations, Continued

- Nicholls, E., Brooks-Holliday, S., Aggarwal, R., & Daly, B. P.** (2012, August). *Insufficient sleep and school engagement: Is there a connection?* Poster presented at the 120th Annual Convention of the American Psychological Association, Orlando, FL.
- Patrick, K. E., Hurewitz, F., & Booth, A. E.** (2012, November). *Word-mapping in autism: Evidence for backwards bootstrapping of social gaze strategies.* Paper presented at the Boston University Child Language Development Conference, Boston, MA.
- Patrick, K. E., Hurewitz, F., Chute, D. L., & Booth, A. E.** (2012, November). *Peabody Picture Vocabulary Test (PPVT) and Autism Diagnostic Observation Schedule (ADOS) as predictors of word-learning abilities of children with autism.* Poster presented at National Academy of Neuropsychology Conference, Nashville, TN.
- Perry, M., Tart-Zelvin, A., & Spiers, M.** (2012, August). *Autism spectrum disorder and savant syndrome in popular films.* Poster presented at the Students Tackling Advanced Research (STAR) 10th Annual Summer Showcase, Philadelphia, PA.
- Rabin, S. J., Herbert, J. D., Forman, E. M., Ibrahim, A., Matteucci, A. J., & Goldstein, S. P.** (2012, November). *The roles of therapist experiential avoidance and extraneous clinical information in predicting therapist preference for exposure treatment for OCD: Preliminary results.* Poster presented at the 46th Annual Convention of Association for Behavioral and Cognitive Therapies, National Harbor, MD.
- Ricelli, S., Salber, K., Segal, A., Greenberg, L., Nezu, A. M., & Nezu, C. M.** (2012, November). *Negative problem orientation as a predictor of worsening cardiac function and increased cardiac events among patients with congestive heart failure at 2-year follow up.* Poster presented at the 46th Annual Convention of the Association for Behavioral and Cognitive Therapies, National Harbor, MD.
- Rosen, T., Patrick, K. E., & Hurewitz, F.** (2012, October). *Preliminary exploration of peer mentor supported goal setting through the Drexel Autism Support Program.* Poster Presented at Autism New Jersey Conference, Atlantic City, NJ.
- Tart-Zelvin, A.S., Eppig, J., Nieves, C., Tabby, D., Libon, D.J., & Williams, J.M.** (2012, June). *A process approach to letter fluency performance in Multiple Sclerosis: Evidence for derailed temporal gradients.* Poster presented at the Annual Conference of the American Academy of Clinical Neuropsychology, Seattle, WA.
- Timko, C. A., Merwin, R. M., Orloff, N., Martin, L. M., Herbert, J. D., & Zucker, N.** (2012, September). *Acceptance-based separated family treatment for adolescents with Anorexia Nervosa.* Poster presented at the annual meeting of the Eating Disorder Research Society, Porto, Portugal.
- Witt, A. A., Ely, A. V., & Lowe, M. R.** (2012, November). *Hedonic hunger and binge eating frequency in bulimia nervosa.* Poster presented at the 46th Annual Convention of the Association for Behavioral and Cognitive Therapies, National Harbor, MD.
- Zamzow, J.A., Culnan, E., Nash, C. O., & Kloss J. D.** (2012, June). *The relationship between napping, academic performance, and depressed mood.* Poster presented at the Annual Convention of the Association of Sleep Research Societies. Boston, MA.

Grants and Awards



Arwa Ibrahim was awarded a Yates Foundation grant totaling \$2,000. Funds will go toward her Master's thesis, entitled "Mixed-Methods Analysis of Iraqi Refugees with Potential Trauma Histories." Arwa prepared the project under the supervision of her advisor, James Herbert, Ph.D.

Efrat Eichenbaum and **Mitra Khaksari** won the 2012 Anne Anastasi Student Poster Award for outstanding student research at the 120th Annual Convention of the American Psychological Society. This award includes a certificate and a \$100 monetary component. Their poster was entitled "Examination of African American and White women's religious coping behaviors following pregnancy loss." Efrat and Mitra both work under the mentorship of Pam Geller, Ph.D.

Mitra Khaksari was also awarded the La Salle University Student Research Award for her poster presentation titled "Perceived barriers to use of infertility treatment by minority women," under the supervision of her advisor, Pam Geller, Ph.D.

Laura Berner was awarded the highly competitive Ruth L. Kirschstein National Research Service Award for Individual Predoctoral Fellows through the National Institute of Mental Health, National Institutes of Health. Her project, entitled "Self-regulatory control and eating: A Neuroimaging study of Bulimia Nervosa," was prepared under the mentorship of Michael R. Lowe, Ph.D., Douglas L. Chute, Ph.D., and Anna Rose Childress, Ph.D. Laura also received an American Psychological Association Dissertation Research Award, totaling \$1,000, to fund her work using fNIRS to investigate eating disorders. In addition, Laura received a \$700 International Travel Fellowship award through Drexel's Office of International Programs and won first place in the Neurocognitive Therapies/Translational Research Special Interest Group Poster Competition at the 2012 Annual Meeting of the Association for Behavioral and Cognitive Therapies.

Casey LaDuke won the Ted Blau Memorial Award for Best Student Poster Presentation at the 32nd Annual Conference of the National Academy of Neuropsychology. This award also included a \$500 prize. Casey works under the mentorship of Dave DeMatteo, Ph.D.

Chris King was awarded \$750 by the American Psychology-Law Society Student Grants-in-Aid Committee to fund his research project entitled "The Utility of RNR-Based Assessment Feedback and Offender Self-Estimate of Risk." Chris works under the mentorship of Kirk Heilbrun, Ph.D.

Professional Service

- ♦ **Kristina Patrick** and Diana D'Argenio work as Trainers for the Drexel Autism Support Program (DASP) which provides peer-mediated autism-specific support services for Drexel students.
- ♦ **Stephanie Brooks Holliday** was elected to be a Member-at-Large of the Graduate Student Committee of the Society for the Psychological Study of Social Issues (SPSSI).
- ♦ **Chris King** was elected Chair-Elect of American Psychology-Law Society Student Section Committee.
- ♦ **Dan Smith** co-mentored two Drexel STAR students through a summer co-op. The goal of the STAR project was to create an electronic and game-like version of a commonly used neuropsychological task (Trail Making Test), designed to assist in administration to so-called "low-functioning" populations.

Program Milestones



Renee Mikorski proposed her Master's thesis , entitled "The effects of a cognitive defusion intervention on body image, body-focused anxiety, and negative affect after viewing ultra-thin media ideals," in September.

Richa Aggarwal proposed her Master's thesis ,entitled "Evaluating the efficacy of an evidence-based teacher training program promoting behavior management and social competence in at-risk pre-school children," in June.

Danielle Brinckman proposed her Master's thesis, entitled "An fNIRS study of the effects of medication on cognitive functioning and cerebral hemodynamics in adults with Attention-Deficit/

Hyperactivity Disorder," in September.

Elizabeth Nicholls proposed her Master's thesis, "Psychological functioning in children and adolescents living with Spinal Cord Injury and their caregivers in Colombia, South America" in July.

Kara Douglas proposed her dissertation, "Heavy alcohol use in individuals with HIV: An evaluation of cognitive factors," in September. Through a partnership with the University of Pennsylvania Center for AIDS Research (CFAR), Kara's project will examine neuropsychological correlates of heavy drinking in a sample of HIV+ individuals. The study is being conducted within a pilot clinical trial of the medication Topiramate to treat alcohol abuse among HIV+ heavy drinkers.

Dan Smith proposed his Master's thesis in May. The primary goals of the thesis are to create normative measures of implicit learning ability and examine the relationship of those measures to IQ and language processing ability. In addition, Dan will be collecting some pilot data of these tasks in a population of children with an autism spectrum disorder, a disorder potentially characterized in part by implicit learning impairments.

Personal News

Alexa Bonacquisti was engaged to marry Zach Powers in August 2012. Alexa and Zach met at Drexel as undergraduate students!

Lauren Bradley was engaged to marry Joshua Popejoy in November!

Heidi Strohmaier was engaged to marry Aldis Kurmis in November!

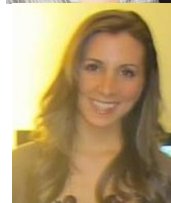


Alexa and Zach

SPOTLIGHT: First-Year Drexel Psychology Ph.D. Students



Leah Brogan graduated from the University of Pennsylvania and has joined Dr. Naomi Goldstein's lab. Her research interests include assessing factors influencing risk taking behaviors of juvenile delinquents, intervention strategies for justice-involved youth, and juveniles' and adults' legal abilities and competencies.



Sarah Filone received a BA (with Honors) from Lafayette College and an MA in Clinical Psychology from Columbia University. For the last 2 years, Sarah has worked at Drexel coordinating the Pennsylvania Mental Health and Justice Center of Excellence and the Statewide Forensic Peer Support Program. As a member of Dr. Dave DeMatteo's lab, her interests include psychopathy, forensic assessment, capital sentencing, and rehabilitation.



Aimee Hildenbrand completed her undergraduate studies at Drexel University and is a member of Dr. Brian Daly's lab. Her research interests include psychosocial and neurocognitive sequelae of pediatric chronic illness and acute medical trauma, as well as the development and evaluation of preventative and early interventions for pediatric medical conditions and underserved youth.



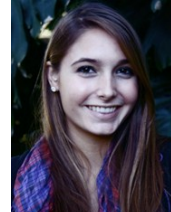
Peter Hitchcock is a first-year doctoral student in the Forman and Herbert lab. His interests include hemispheric lateralization in anxiety and depression, and applications of mindfulness training to clinical treatments.



Stephanie Kerrigan graduated from Rowan University. She has joined Dr. Meghan Butryn's lab. Her research interests include novel treatments for eating disorders and obesity and technology-based dissemination.



Stephanie Manasse graduated from the University of California, Berkeley and is working with Dr. Evan Forman. Her research interests include the neurocognition of maladaptive eating behavior and the development of novel treatments for eating and weight disorders.



Caterina Mosti graduated from the University of Florida and is currently a member of Dr. Mary Spiers' and Dr. Jackie Kloss' lab. Her research interests include sleep and neuropsychology, specifically changes in sleep and sleep disturbance following traumatic brain injury.

SPOTLIGHT: First-Year Drexel Psychology Ph. D. Students, Continued



Jessica Stern graduated from New York University and currently works in the lab of Drs. Art and Chris Nezu. Her research and clinical interests include CBT and other therapy based treatments for people with mood and anxiety disorders, particularly in chronic illness and military/veteran populations.

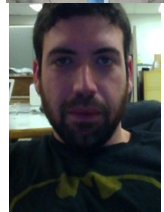


Elizabeth Whipple is a first-year doctoral student in the Neuropsychology Concentration with Maria Schultheis's lab. Her main research interests include neuropsychological evaluation and rehabilitation, particularly in veterans with brain injury and PTSD.

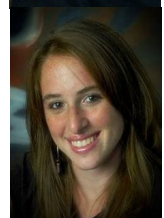
First-Year Applied Cognitive and Behavioral Sciences Students



Brian Erickson holds BS and MS degrees from Drexel, in Mechanical and Neuroengineering, respectively. He is working in the lab of Dr. John Kounios examining resting state data of insightful vs. analytic problem solvers for network differences via AR modeling, coherence and Granger causality analysis. He intends to specialize in non-invasive neural stimulation techniques for cognitive enhancement (i.e., tDCS for enhancement of creativity.)



David Rosen received an M.S. in Teaching and Instruction from Drexel University and a B.A in Psychology from Emory University. He has joined Dr. Youngmoo Kim's Music and Entertainment Technology Lab (MetLab), where he is researching the impact of technology on musical creativity.



Samantha Winter, BA. & B.M. graduated from the University of Michigan and is a first year student in Drexel's ACBS program. She is a member of Dr. Michael Lowe's lab, where she is interested in examining the neural correlates of obesity and eating disorders through neuroimaging. She hopes to specifically assess comorbidity of eating disorders and other psychological or biological disorders.

First-Year JD/Ph.D. Students



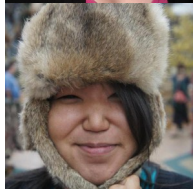
Jaymes Fairfax-Colombo is a 2010 graduate of Swarthmore College, where he majored in Psychology and Political Science. His major interests in Clinical-Forensic Psychology are recidivism reduction, re-entry planning, and diversionary courts; he also has an interest in high-profile offenders. Away from school, Jaymes likes socializing, music, sports, long walks on the beach, and making really corny jokes.

Suraji Wagage

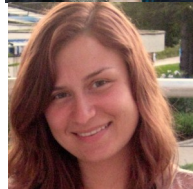
First-Year Drexel Psychology M.S. Students



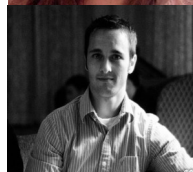
Caroline Grady graduated from Johns Hopkins University. She is a member of Dr. Pam Geller's lab. Her clinical and research interests include health psychology regarding women's health and chronic illnesses.



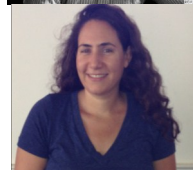
Dayonna Park currently works for Dr. Thomas Hewett in the Cognitive psychology lab and also conducts research at the AJ Drexel Plasma Institute. She received her B. A. in 2008 from West Chester University in Psychology. Dayonna's goal is to find an interdisciplinary connection between psychology, neuroscience, and plasma (the fourth state of matter).



Ana Prelic graduated from Drexel University. She is a member of Dr. Goldstein's lab. Her research and clinical interests include forensic psychology and particularly juvenile probation.



Joseph Hengoe graduated from Hiram College and is a member of Dr. Kirk Heilbrun's lab. His clinical and research interests include the neuroscience underlying forensic psychology.



Julia Grayer graduated from Haverford College and is a member of Dr. Felicia Hurewitz's lab. Her clinical and research interests include autism spectrum disorders.

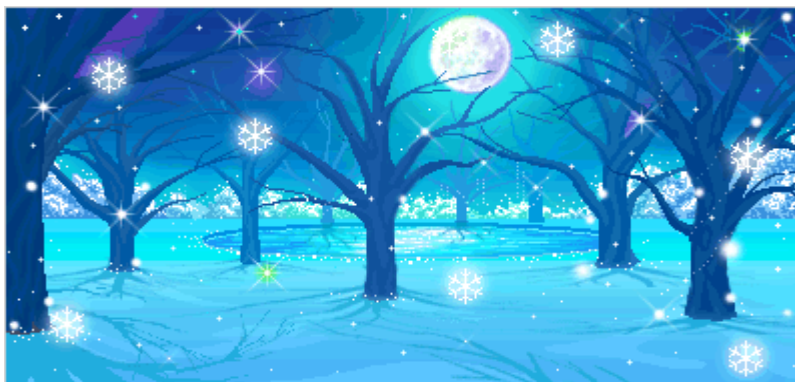
Epiphania Agordo

Diana D'Argenio

Leah Schumacher

Sarka Turecka

***Wishing all of you a
wonderful Holiday sea-
son with family and
friends, and a Happy
New Year!***



Happy Holidays!