

GRADUATE PROGRAM IN NEUROSCIENCE



DREXEL UNIVERSITY
Graduate School of
**Biomedical Sciences
and Professional Studies**
College of Medicine

ABOUT US

The Graduate Program in Neuroscience is a collaborative training community centered in the Drexel University College of Medicine Queen Lane Campus. Our students come from around the world and typically have undergraduate degrees in biology, biochemistry, neuroscience, psychology or physiology. With a commitment to excellence, we prepare students for success in various careers across both academia and industry. Our graduate program offers a research-intensive training experience that emphasizes critical thinking, state-of-the-art techniques and communication.



Queen Lane Campus

PhD program: Each year, we admit seven to ten PhD students who receive full tuition coverage, an annual stipend (\$33,000 for 2020-21), and subsidized health insurance. Our PhD students typically graduate in five years.

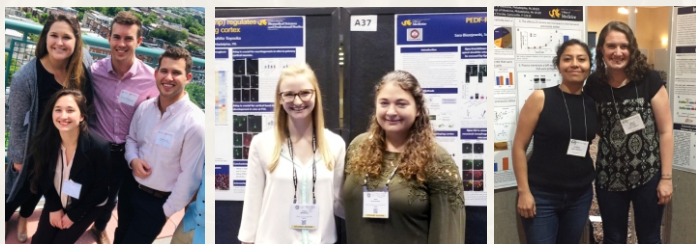
MS program: We enroll four to seven MS students each year who fully participate in our graduate coursework and gain valuable hands-on research experience. Our MS students typically graduate in two years.

NETWORKING

Our students are exceptionally collaborative – often working in teams and becoming lifelong colleagues and friends.



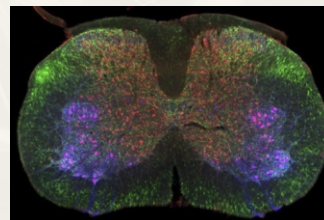
Students have many opportunities each year to attend national and international conferences, which affords them the opportunity to meet leaders in their fields.



OUR RESEARCH

The Drexel Graduate Program in Neuroscience covers a wide range of neuroscience areas, with five specialities.

Marion Murray Spinal Cord Research Center

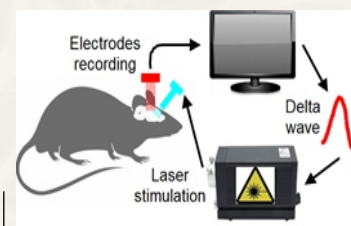


motor, sensory and autonomic dysfunction, neural regeneration, rehabilitation, stem cell therapy

spinal cord

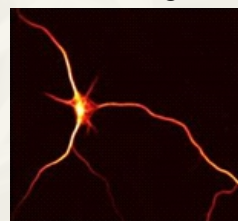
Systems and Behavioral Neuroscience

autism, addiction, cognitive dysfunction, memory, PTSD, schizophrenia, sleep, stress, TBI



closed-loop optogenetic control

Cellular Neuroscience, Neurodevelopment and Neurodegeneration

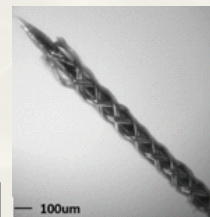


axon growth and guidance, mutations with disease, cellular reprogramming, neural stem cell biology and engineering

developing neuron

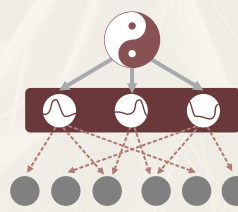
Neuroengineering

design and function of neural circuits, motor and sensory function, engineering framework, interdisciplinary approaches



braided multi-electrode probe

Computational Neuroscience



computational models of neurons, neuronal networks, and biomechanics, data science, machine learning, dynamical systems

the locomotor central pattern generator

GRADUATE PROGRAM IN NEUROSCIENCE



DREXEL UNIVERSITY
Graduate School of
**Biomedical Sciences
and Professional Studies**
College of Medicine

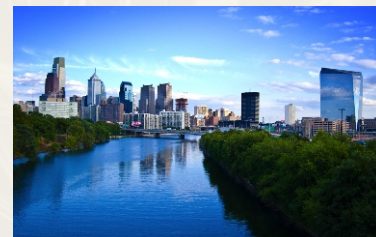
PHILADELPHIA, A CITY RICH IN HISTORY, DIVERSITY AND CREATIVITY



Philadelphia was named a top city to visit by the National Geographic



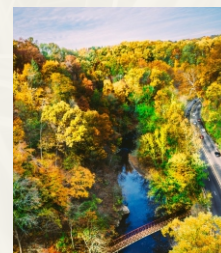
The Philadelphia Museum of Art is just one of many attractions



Philadelphia is a hub for research and entrepreneurship

EAST FALLS NEIGHBORHOOD

Drexel University College of Medicine is located in the East Falls section of Philadelphia, just outside the hustle and bustle of Center City. East Falls is a great place to live, with many great restaurants and the expansive Fairmount Park along the Schuylkill River just a few blocks away. A free Drexel shuttle route connects the College with the rest of the city. Our students live either close to campus in East Falls or in Center City. The choice is yours!



GRADUATE STUDENT ASSOCIATION

The Graduate Student Association (GSA) represents all students enrolled in the program. The GSA supports networking, fosters career development (from resume building to meeting people with diverse backgrounds and expertise), and offers travel awards to attend scientific meetings.



OUTLOOK FOR OUR TRAINEES

Our students graduate not only with high-quality peer-reviewed scientific papers, but also with a network of mentors and peers who will continue to support them for the rest of their careers. Our trainees have had highly successful careers in academia, industry and government. Some of our recent graduates who are now postdoctoral fellows:



Brielle Ferguson, PhD
Dept. Neurology
Stanford University
Graduated 2017

Lyandysha Zholudeva, PhD
Gladstone Institutes
University of California, SF
Graduated 2018



Eugene Mironets, PhD
Basic & Translational Sci.
University of Pennsylvania
Graduated 2019

Austin Coley, PhD
Salk Institute
University of California, SD
Graduated 2019



Get in Touch

Program Director:
Peter Baas, PhD
pwb22@drexel.edu

Program Administrator:
Ipatia Daigle
ied26@drexel.edu

Chair of PhD Admission Committee:
Jessica Barson, PhD
jrb455@drexel.edu

Chair of MS Admission Committee:
Marie-Pascale Côté, PhD
mc849@drexel.edu