

Photo by: Kevin Egan, doctoral candidate, Laboratory of Stephen Jennings, PhD



DREXEL UNIVERSITY
Graduate School of
**Biomedical Sciences
and Professional Studies**
College of Medicine

Microbiology & Immunology, MS or PhD

Our Microbiology & Immunology graduate programs offer multidisciplinary education and training, culminating in an MS or PhD degree. Rigorous training and expert mentoring allow you to experience and participate in research ranging from cellular and molecular pathogenesis of infectious agents, host response to the pathogens, to the discovery and development of immunotherapies and pharmaceuticals against a variety of diseases. Our programs prepare you for leading roles in academic, government, pharmaceutical, biotech or clinical research environments.

THE RESEARCH: BROAD RANGE OF SUBJECT AREAS

New approaches to the study of basic and applied aspects of microbiological and immunological research have opened avenues in the study of infectious disease and host defense. Our students and their mentors study a wide variety of topics including:

- Microbial pathogenesis and genomics
- Neuroimmune disorders
- Malaria
- Viral infection and pathogenesis
- Vaccine development
- Computational Biology in Infectious Disease

THE DEGREES: TO SUIT YOUR CAREER GOALS

MS: We offer both thesis-based and non-thesis based Master of Science degrees. Students with a thesis-based MS may apply to the PhD program following graduation, and credits may be eligible for transfer into the advanced program.

PhD: The PhD program involves a set of rigorous courses and an intensive research component. Graduates will be thoroughly prepared for a variety of careers, including postdoctoral work at the world's most prestigious research institutions.

THE FACULTY: EXPERTS IN THEIR FIELD

Faculty in the Microbiology & Immunology programs provide comprehensive instruction and training in molecular and cell biology, biochemistry, microbiology and immunology, as well as in-depth training in their own area of research. Collaboration allows our students to train in laboratories in the departments of Microbiology & Immunology, Biochemistry & Molecular Biology, Medicine, and Pharmacology & Physiology, Biomedical Engineering, or with affiliate faculty at the Fox Chase Cancer Center, the Baruch S. Blumberg Institute, or the Lankenau Institute for Medical Research.

Admissions Requirements

- Completed online application
- All supplementary material submitted by deadline
- Deadline for PhD:
 - Domestic – December 15
 - International – December 15
- Deadlines for MS:
 - Domestic – July 15
 - International – May 15
- Bachelor's degree from an accredited college or university
- GRE scores are not required for admission
- International students must submit TOEFL or IELTS score; Waivers may be granted on a case-by-case basis
- Official transcripts from all post-secondary institutions attended
- International students must submit a course-by-course evaluation by WES or another NACES organization
- Essay or personal statement
- Résumé
- Three letters of recommendation
- Application fee: \$75.00

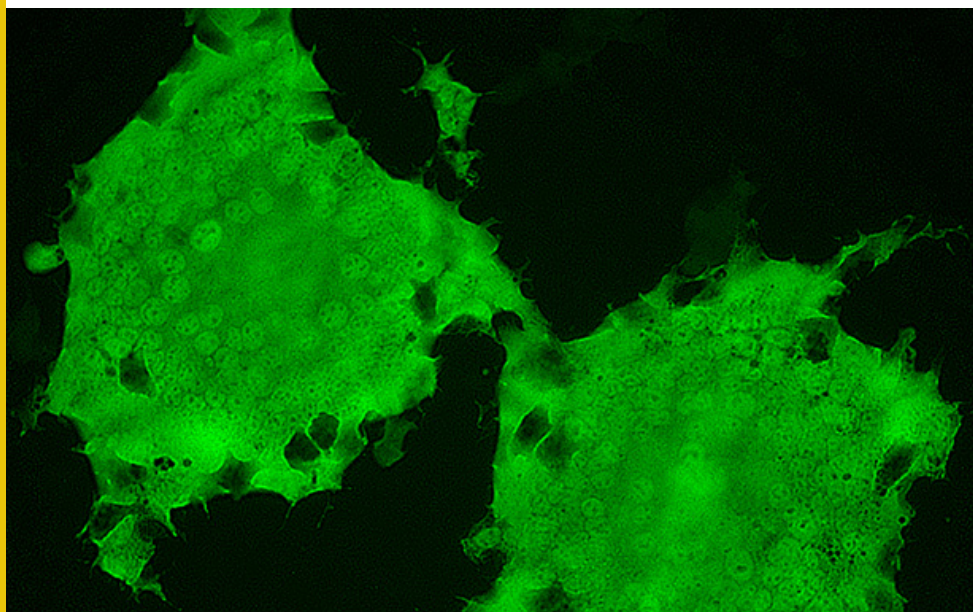
For more information about how to apply to the Microbiology & Immunology (MI) program, visit drexel.edu/medicine/academics/graduate-school/microbiology-immunology/how-to-apply/

CURRICULUM:

The Microbiology & Immunology curriculum includes a selection of core courses in the fundamentals of biomedical sciences and a series of interdisciplinary graduate courses in Microbiology & Immunology. Elective courses allow students to specialize in a particular field of study and amplify their knowledge base. Course topics include Experimental Therapeutics, Molecular Pathogenesis, Immunology, Molecular Virology and Emerging Infectious Diseases.

PhD students complete three required research rotations before a thesis laboratory is determined. Thesis-based MS students are also required to conduct research during their training.

For more detailed information on the curriculum, please visit the program website at drexel.edu/medicine/microimmuno.



Cytopathic effects in coronavirus infected cells | Source: Dr. Sonia Navas-Martin

CONTACT US!

Microbiology & Immunology
Graduate School of Biomedical Sciences and Professional Studies

James M. Burns Jr., PhD
Program Director
215.991.8490
jmb53@drexel.edu

Joris Beld, PhD
Associate Program Director
267.359.2355
jb3669@drexel.edu

Ipatia Daigle
Academic Administrator
215.991.8157 or 215.762.1420
ied26@drexel.edu
biograd@drexelmed.edu

Michael Nonnemacher, PhD
Director, Division of Biomedical Sciences Programs
267.359.2340
mm25@drexel.edu

Bency Onnoony
Director, Admissions and Recruitment
267.359.2316
bo25@drexel.edu