

The graphic features a dark blue background with a faint, stylized world map. A large, multi-colored 'elam' logo is at the top. Below it is the text 'Executive Leadership in Academic Medicine'. In the center is a dark blue circle containing 'ELAM celebrating 30 1995'. The number '30' is large and multi-colored. A ring of yellow dots surrounds the circle. At the bottom is '1995-2025' in white outline font, with a dashed line leading to a dot on the map of South America.

elam

Executive Leadership in Academic Medicine

ELAM
celebrating
30
1995

1995-2025



welcome

Thirty years ago, the first ELAM graduate received her certificate. Today, in 2025, our network has grown to more than 1,600 graduates at 300 institutions worldwide, all working to shape the future of academic health care. With nearly 150 fellows in each annual class, ELAM continues to evolve, ensuring our graduates are equipped to navigate and lead in an ever-changing health care landscape.

Founded in 1995, ELAM honors the legacy of Woman's Medical College, which was founded in 1850 as the Female Medical College of Pennsylvania. What began as a leadership development program for women in medicine with just 25 participants has become the premier leadership program for women in academic medicine, dentistry, public health, and pharmacy. In 2022, we expanded our reach with the Executive Leadership in Health Care track, supporting leaders in health care and hospital systems. This year, we launched Allyship at ELAM, a track designed to foster inclusive work environments and address organizational and institutional structural barriers. Leadership that reflects a broad range of perspectives and experiences is essential to advancing science and achieving the best outcomes for patients.

Despite remarkable achievements by our graduates and the increasing presence of women in medical schools, progress toward equity in leadership has been frustratingly slow. Women remain underrepresented in top positions across academia and hospital leadership. Persistent disparities in promotion rates, compensation, funding, academic publishing and board representation, continue to hinder career advancement.

As Dr. Page Morahan has said, when ELAM was launched in 1995, she genuinely did not believe we would need such a program two decades later. And yet here we are thirty years later. As a community of leaders and institutions, we

need to accelerate the concepts of moving from “fixing the woman” to fixing the system. While leadership training and networking remain critical, institutions must also implement systemic changes to create equitable opportunities. Looking ahead, we aim to develop new programs that support leadership at every level—from mid-career faculty to programs that support the highest-level leaders once they achieve those roles. Strengthening and empowering our alumnae network, our greatest asset, will remain a core priority.

When D. Walter Cohen, DDS founded ELAM in 1995, he understood that transforming academic medicine required persistent culture change. His vision, along with the dedication of co-founder Patricia P. Cormier, EdD, and the leadership of our founding director Page Morahan, PhD, and co-director Rosalyn Richman, MA, built the foundation for our continued success. We are deeply grateful for their contributions and for the ongoing support of the ELAM community as we work toward a more equitable future in health care leadership.

Warmly,

Nancy D. Spector, MD

Professor of Pediatrics | Betty A. Cohen Chair in Women's Health | Senior Vice Dean for Faculty
Executive Director, Lynn Yeakel Institute for Women's Health and Leadership (IWHL) | Executive Director,
Executive Leadership in Academic Medicine® (ELAM) and Executive Leadership in Health Care (ELH)

thank you to our generous sponsors

anniversary level



catalyst level



innovator level



Tonika Lam, PhD and
Nicholas Molino, PhD



Nancy Spector, MD, ELAM 2010,
and the Spector family, Jeffrey, Zachary,
Paula, Tyler and Hannah



patron level



Monica Kraft, MD,
ELAM 2018



champion level



Erika Brown, PhD,
ELAM 2015



Sheetal Desai, MD, MSEd
ELAM 2024
UCI Department of Medicine



Deborah C. German, MD,
ELAM Inaugural Class
1995-1996



Donna McNelis, PhD



Anne Mosenthal, MD,
ELAM 2012



Amanda M. Termuhlen MD,
ELAM 2010



elam

about

Established in 1995, the *Hedwig van Ameringen* Executive Leadership in Academic Medicine® (ELAM) program offers an intensive one-year fellowship of leadership training with extensive coaching, networking and mentoring opportunities aimed at expanding the national pool of qualified women candidates for leadership in academic medicine, dentistry, public health and pharmacy. The program is dedicated to developing the professional and personal skills required to lead and manage in today's complex health care environment, with special attention to the unique challenges facing women in leadership positions. More than 1,600 ELAM alumni hold leadership positions in institutions around the world.

Despite the greater numbers of women matriculating at our nation's medical, dental and public health schools, women are still significantly underrepresented within the topmost administrative ranks of academic health centers (AHCs), even though there is a widely acknowledged need to diversify leadership and improve cultural and gender sensitivity in health care training and delivery. Placing more women in positions of senior leadership at AHCs will provide important new perspectives for decision making and help speed the curricular, organizational and policy changes needed to ensure a more effective, representative and responsive health care system.

Since its inception, ELAM's goals have been:

- To advance women in leadership positions
- To support and sustain women who attain leadership positions
- To change the culture of academic health care so that contributions of women are recognized and valued

**More than
1,600 ELAM
alumni hold
leadership
positions in
institutions
around the
world**

drexel.edu/elam



mission

ELAM develops and connects successful professionals so they can confidently lead academic health care into the future.

vision

To transform health care by seating and sustaining the most talented and dedicated leaders.

shared values

- Act with integrity and authenticity.
- Spread joy with your work.
- Act with empathy and respect.
- Listen to truly understand.
- Work collaboratively and uplift others.
- Stretch and challenge others positively.
- Support, encourage and exude optimism.
- Recognize and celebrate others' strengths.
- Commit to lifelong learning.





event schedule

may 1

5:30–6 p.m.	VIP Cocktail Reception (Invitation Only)
6–7 p.m.	Registration and Cocktails
7–8 p.m.	Dinner
8–8:15 p.m.	Welcome and Introductions
8:15–9 p.m.	Keynote conversation with Katalin Karikó, PhD Moderator: Cathie Siders, PhD
9–9:15 p.m.	Report on ELAM Network Survey Inga Carboni, PhD
9:15–9:45 p.m.	Awards and Honors
9:45 p.m.	Closing

may 2

7–8:40 a.m.	Breakfast
8:40–8:55 a.m.	Opening Remarks
8:55–10:10 a.m.	Session 1: Panel: Managing People, Money and Boards Moderator: Jill Baren, MD, MS, MBA (ELAM '10) Panelists: Evie Alessandrini, MD, MSCE (ELAM '12) Bettina Beech, DrPH, MPH (ELAM '12) Cherri Hobgood, MD (ELAM '14)
10:10–10:40 a.m.	Break
10:40 a.m.–12 p.m.	Session 2: Panel: Leading Through Challenging Times Moderator: Lilly Marks Panelists: Ana López Fuentes, DMD, MPH (ELAM '08) Catherine Lucey, MD (ELAM '06) Megan Ranney, MD, MPH

12–2 p.m.	Lunch and Networking
12:45–1:45 p.m.	Legacy Center Archives Presentation
1–1:50 p.m.	Working With Search Firms Panelists: Joyce De Leo, PhD (ELAM '02), Toni Lam, PhD
2–2:45 p.m.	Session 3: Fireside Chat With Anthony Fauci, MD Moderator: Megan Ranney, MD, MPH
2:45–3:30 p.m.	Session 4: Managing Reorganization Moderator: Monica Lypson, MD, MHPE (ELAM '13) Panelists: Nadine Katz, MD (ELAM '10) Amy Murtha, MD (ELAM '15)
3:30–4:00 p.m.	Break
4–5:15 p.m.	Session 5: Closing Keynote: Lilly Marks on Legacy
5:30–6:30 p.m.	Cocktail Reception

Keynote Speaker



Katalin Karikó, PhD is professor at University of Szeged, Hungary and adjunct professor of neurosurgery at the Perelman School of Medicine, University of Pennsylvania, where she worked for 24 years. She is a former senior vice president of BioNTech SE, Mainz, Germany, where she worked between 2013-2022. She received her PhD in biochemistry from University of Szeged in 1982. For four decades, her research has been focusing on RNA-mediated mechanisms with the ultimate goal of developing in vitro-transcribed mRNA for protein therapy. She investigated RNA-mediated immune activation and co-discovered that nucleoside modifications suppress immunogenicity of RNA, which widened the therapeutic potentials of mRNA. She co-founded and from 2006-2013 served as CEO of RNARx, a company dedicated to developing nucleoside-modified mRNA for therapy. Her patents - for

application of non-immunogenic, modified RNA - co-invented with Drew Weissman were used to create the FDA-approved COVID-19 mRNA vaccines by BioNTech/Pfizer and Moderna to fight the pandemic. For her achievements she received many prestigious awards, including the 2023 Nobel Prize in Physiology or Medicine.

Fireside Chat



Anthony S. Fauci, MD has served as a distinguished university professor at Georgetown University School of Medicine and McCourt School of Public Policy since 2023. He also is a distinguished senior scholar at the O'Neill Institute for National and Global Health Law at Georgetown. Previously, Dr. Fauci directed the National Institute of Allergy and Infectious Diseases at the National Institutes of Health from 1984 to 2022. In that role, Dr. Fauci was a key advisor to seven presidents on global HIV/AIDS issues, and on preparedness against emerging infectious disease threats. He also served as the chief medical advisor to President Joe Biden. Dr. Fauci was one of the principal architects of the President's Emergency Plan for AIDS Relief (PEPFAR), which has helped save more than 25 million lives throughout the developing world.

Dr. Fauci is a member of the National Academy of Sciences, the National Academy of Medicine, the American Academy of Arts and Sciences, and many other professional societies. He has received numerous awards including the Presidential Medal of Freedom, the National Medal of Science, and the Mary Woodard Lasker Award for Public Service. He has been awarded 62 honorary doctoral degrees from universities in the United States and throughout the world, and is the author, coauthor, or editor of more than 1,400 scientific publications.

Program presenters and panelists



Evaline A. Alessandrini, MD, MSCE (ELAM '12)

Evaline (Evie) Alessandrini, MD, MSCE, is chief operating officer of Cincinnati Children's, a nonprofit, comprehensive pediatric health system. As a leader in clinical care and innovation, Cincinnati Children's ranked #1 in *U.S. News & World Report's* 2023-2024 list of best children's hospitals in the nation. Dr. Alessandrini is a mother of three, wife and daughter from a large Italian-American family. She grew up in the northern Delaware/Philadelphia area and is a committed Philadelphia sports fan. She is driven by working with teams to design healthcare transformation initiatives that lead to measurable improvements in outcomes and relentlessly focus on the wellness of both patients and employees.

Professionally, Dr. Alessandrini graduated from Jefferson Medical College and completed her pediatric residency and chief residency at Children's National in Washington, DC. where she fell in love with emergency medicine – working in a very busy ED with terrific role models. This led her to a pediatric emergency medicine fellowship at Children's Hospital of Philadelphia, where mentors challenged her to excel in health services research, so she received her Master's degree in Clinical Epidemiology at the University of Pennsylvania and completed an NIH career development award.



Jill M. Baren, MD, MS, MBA (ELAM '10)

Dr. Baren has over 30 years of progressive leadership experience in academic medicine and higher education. She is the immediate past president of Lake Forest College, serving as the 14th president and the first woman president in the College's history. Under her leadership, Lake Forest College was ranked as the top liberal-arts college in the Midwest by the *Wall Street Journal* and the #1 college in the country for Social Mobility by *U.S. News & World Report*. Dr. Baren was also the former provost and vice-president of academic affairs at University of the Sciences, and former department chair and chief of emergency services at Penn Medicine.

Dr. Baren was a fellow with the American Council on Education where she served in the office of the president at Villanova University. She has served in multiple leadership roles in the specialty of emergency medicine, including president of the

American Board of Emergency Medicine, president of the Society for Academic Emergency Medicine (SAEM), and chair and medical editor of the Pediatric Emergency Medicine sub board of the American Board of Pediatrics. She was the 2017 recipient of the John A. Marx leadership award from SAEM in honor of exceptional leadership contributions to the specialty and the Association of Academic Chairs in Emergency Medicine award for outstanding academic leadership.



Bettina M. Beech, DrPH, MPH, FAHA (ELAM '12)

Bettina M. Beech, DrPH, MPH, FAHA, is chief of Population Health and Translational Science and clinical professor of Clinical Sciences at the University of Houston. She is a population and public health scientist whose work spans clinical, population health, community-partnered, and health policy research to examine intergenerational transmission of behavioral, social, and environmental risks for cardiovascular and cardiometabolic diseases among African American children, adolescents, parents, and grandparents. Dr. Beech's work has been continuously funded by the National Institutes of Health (NIH) for over two decades and she has received funding from nine institutes during this period. She has provided leadership on

important studies such as the Jackson Heart KIDS Study (an ancillary offspring study to the Jackson Heart Study), Girl's Health Enrichment Multi-site Studies (GEMS), the Healthy Families Study (a childhood obesity cluster RCT with Hispanic families), and Parents and Children Together Preventing Diabetes (PACT-PD) (one of the first studies translating the Diabetes Prevention Study for African American parents and children). Dr. Beech has been committed to scaling family-based interventions to reduce health disparities and improve health outcomes and overall quality-of-life, particularly among high-risk populations.



Inga Carboni, PhD

For more than 25 years, Dr. Carboni has helped individuals and organizations increase engagement, innovation, and leadership effectiveness by applying the science of networks and network analysis to the development and management of productive working relationships. She has served as a consultant for Fortune 500 firms, leveraging her network insights to build more gender-inclusive organizations. Dr. Carboni is the author of *Connect the Dots: How to Build, Nurture, and Leverage Your Network to Achieve Your Personal and Professional Goals* and her work has been featured in *Harvard Business Review*, *Organizational Dynamics*, *California Management Review*, and *MIT Sloan Management Review*. Grants from the National Institutes of Health, the National Institute of Justice, and the William T. Grant Foundation

have supported her scholarship. An award-winning teacher and researcher, Dr. Carboni is a professor of organizational behavior at the College of William & Mary. For more information, visit www.ingacarboni.com.



Joyce A. De Leo, PhD (ELAM '02)

Joyce De Leo, PhD (she/her), applies the knowledge, experience, and dedication to proven research techniques gained during a distinguished career in academia to her Of Counsel role for WittKieffer's Academic Medicine Practice. With an appreciation for the unique qualities needed in today's leaders, Dr. De Leo recruits senior executives, clinician leaders, and senior scientists on behalf of prominent academic medical centers, hospitals and health systems, research institutes, faculty group practices, health sciences universities, colleges and universities, public health organizations and not-for-profit institutions. Based in the Boston area as well as Charleston, SC, Dr. De Leo has more than 25 years of experience in research, academic program building, strategic planning, mentoring and teaching. Prior to joining

WittKieffer, Dr. De Leo served as vice president of Academic Affairs for Emmanuel College in Boston, MA. In this role, she oversaw undergraduate and graduate academic programs, faculty and community research and education partnerships in the Boston area. Before this, Dr. De Leo held several leadership positions in more than

20 years with Dartmouth College and Dartmouth Medical School in Hanover, NH, including chair of Pharmacology and Toxicology and founding director of the Neuroscience Center at Dartmouth.



Cherri Hobgood, MD, FACEP, FIFEM (ELAM '14)

Cherri Hobgood, MD, is a visionary physician executive with a distinguished career in academic medicine, , and founder of the Center for Leadership Life. A graduate of the UNC School of Medicine, Dr. Hobgood has held leadership roles in the dean's office, practice plan management, and as a pioneering department chair. Her contributions to academic medicine have been recognized with prestigious awards, including the 2019 UNC-School of Medicine Distinguished Medical Alumna and the Society for Academic Emergency Medicine Jon Marx Leadership Award and the Advancement of Women in Academic Medicine. She holds the Order of the IFEM from the International Federation for Emergency Medicine.

Dr. Hobgood's groundbreaking research into the intersection of gender and leadership emerged from her firsthand observation of the powerful impact senior women leaders can have on organizational culture. Driven by curiosity and a passion for fostering diverse leadership, she embarked on a rigorous multi-year study to uncover the hidden forces that shape the experiences of women in leadership roles. Through her in-depth analysis, Dr. Hobgood gained a unique perspective on how organizational culture can both hinder and support the advancement of diverse leaders



Nadine T. Katz, MD (ELAM '10)

Dr. Nadine Katz is vice president at Montefiore Medical Center and medical director of the Einstein Hospital, and is professor of Ob Gyn and Women's Health and the Inaugural Irwin R. Merkat, MD Women's Health Faculty Scholar at Albert Einstein College of Medicine.

Dr. Katz has been a volunteer leader for the Association of Professors of Gynecology and Obstetrics (APGO). She chaired the APGO Development Committee and led a highly successful fundraising campaign. Dr. Katz served as APGO President during the COVID pandemic and under her leadership the organization provided timely educational resources for medical educators and students. As APGO president, she launched the APGO Diversity, Equity and Inclusion (DEI) Guidelines Task Force to develop an anti-racist, race-conscious, inclusive and equitable method of evaluating and developing educational materials. Along with members of the Task Force, she continues to share these resources to expand the impact of this work in and beyond Ob Gyn, with the perspective to set expectations and help medical schools and academic health systems achieve this standard of mitigating institutionalized racism and bias towards all groups, by promoting inclusivity and opportunities in medical education, research, and practice.



Tonika Lam, PhD

Tonika (Toni) Lam, PhD serves as the global leader for the Academic Medicine Practice of Korn Ferry. She is a senior client partner in the Philadelphia office, representing the Firm's Healthcare Services Practice.

Dr. Lam focuses her executive search work on board assignments, c-suite (president, CMO, CAO, and COO), presidents, deans, department chairs and other executive leadership positions, notably identifying distinguished leaders across the academy, industry, and non-profit organizations. Her consulting work is focused nationally on academic health systems and medical centers, NCI-designated comprehensive cancer centers, research institutions, biopharma, non-profits, professional associations, and organizations.

She is an author and frequent speaker and has partnered with leading organizations, including the Association of American Medical Colleges (AAMC), the Hedwig van Ameringen Executive Leadership in Academic Medicine and Executive Leadership in Health Care (ELAM and ELH).

She previously served on the Editorial Board for two scientific journals, Autoimmunity and Biomarkers, and has over 10 years of basic sciences and translational research experience.



Ana López-Fuentes, DMD, MPH, FACD, FICD (ELAM '08)

Dr. López-Fuentes is a tenured professor, at the Community Dentistry Section of the University of Puerto Rico School of Dental Medicine (UPRSDM). She is past president of American Dental Education Association (ADEA) Board of Directors, the 2024-2025 immediate past-chair, 2023-2024 chair and 2022-2023 chair elect of the ADEA Board of Directors. She is faculty and coach of ADEA's Council of Deans' Fellowship. She is a member of the American Dental Association (ADA) Stakeholder Advisory Panel. Dr. López-Fuentes served as dean of the UPRSDM from 2014-2018. At the UPRSDM, she serves as president of the Infection Control and Quality Assurance Standing Committees. She earned a certificate in dental infection prevention and control from OSAP and the DALE Foundation. She is a member of the ADEA

Collaborative on Dental Education Climate Assessment (CDECA), and UPRSDM's ADEA women liaison officer since 2006.



Catherine R. Lucey, MD, MACP (ELAM '06)

Catherine R. Lucey, MD, MACP, a practicing physician and leading national voice on medical school education, took the helm as executive vice chancellor and provost (EVCP) in January 2023. As EVCP, Dr. Lucey leads both UCSF's robust research enterprise as well as its highly ranked academic programs, comprising four professional schools and the Graduate Division. She works in close collaboration with the chancellor and the leadership team to develop and implement campus priorities and vision, maintain the University's status as an international leader in health sciences education and research, and oversees external partnerships representing UCSF's best interests across the University of California system, at the UC Office of the President, and beyond. Renowned for her leadership, Dr. Lucey was vice dean for Education

and executive vice dean for the School of Medicine, reporting to Dr. Talmadge E. King, Jr. In these roles, she directed the undergraduate, graduate, and continuing medical education programs of the School of Medicine and the Office of Medical Education. A champion of diversity, equity, and inclusion, Dr. Lucey also was on the executive management team for the School of Medicine's Differences Matters Initiative and oversaw other strategic projects across the campus.



Monica Lypson, MD, MHPE (ELAM '13)

Dr. Monica Lypson is the vice dean for Education at Columbia University's Vagelos College of Physicians and Surgeons and holds the title of Rolf H. Scholdager professor of Medicine at Columbia University Irving Medical Center. She is dedicated to advancing medical education, improving equity in healthcare, and preparing a culturally competent workforce.

Dr. Lypson served as the director of Medical and Dental Education for the Veterans Health Administration, where she oversaw national programs aimed at improving training and delivering care to our nation's veterans. She has also held roles as vice-chair of Medicine and division director of General Internal Medicine at The George Washington University School of Medical and Health Sciences and served

as secretary and president of the Society of General Internal Medicine.

Board-certified in general internal medicine, Dr. Lypson has significant leadership experience in clinical, educational, and administrative settings. At the Ann Arbor VA Healthcare System, she served in roles including acting chief of staff. At the University of Michigan Medical School, she was assistant dean for Graduate Medical Education and faculty director of the Standardized Patient Program.



Lilly Marks

Lilly Marks served from 2010-2020 as Vice President for Health Affairs for the University of Colorado leading the Anschutz Medical Campus, which includes the University's Schools of Medicine, Dental Medicine, Pharmacy, Public Health, College of Nursing and Graduate School and the University of Colorado Hospital and Children's Hospital Colorado. Prior to her health campus leadership role, Ms. Marks spent two decades as both senior associate dean for Finance and Administration of the School of Medicine and as CEO of University of Colorado Medicine, the 501(c)(3) faculty practice organization.

Ms. Marks's extensive board experience includes serving as chair of the board of directors of the Association of American Medical Colleges, University of Colorado Hospital, and the Association of Academic Health Centers. She has also served on the board of directors of the Federal Reserve Bank of Kansas City, University of Colorado Health System, Children's Hospital Colorado, and the Advisory Board for Clinical Research of the National Institutes of Health. She has served on numerous additional local and national boards as well as the board of a publicly traded corporation.



Amy P Murtha, MD (ELAM '15)

Amy Murtha, MD, joined Rutgers Robert Wood Johnson Medical School as dean in August 2022. An accomplished researcher and maternal-fetal medicine specialist, she focuses her research and clinical work on caring for complicated pregnancies and on identifying the best ways to diagnose and care for patients at risk for preterm birth. Before becoming dean, Dr. Murtha served as professor and chair of the Department of Obstetrics, Gynecology and Reproductive Sciences and chief medical officer of Women's Health at University of California, San Francisco (UCSF), where she made a tremendous impact through clinical expansion across the health system, led the establishment of a women's health service line, and increased support for faculty researchers. Dr. Murtha joined UCSF after a 20-year career

on faculty at Duke University, where she assumed increasing leadership roles following her residency and fellowship training there.



Megan Ranney, MD, MPH

Dr. Megan L. Ranney is an emergency physician, researcher, and leading advocate for innovative approaches to public health. She is the dean of the Yale School of Public Health, the C.-E. A. Winslow professor of Public Health, and a professor of Emergency Medicine at Yale University. Dr. Ranney is the first dean to lead the school since its independence in 2024. Under her leadership, the school is pursuing a bold new strategic vision of linking science and society, making public health foundational to communities everywhere.

Dr. Ranney's career has been driven by her front-row seat to preventable public health crises, from her formative years in the Peace Corps to her 20+ years as a practicing emergency medicine physician. Whether addressing road traffic injuries and firearm violence, HIV and COVID-19, or the importance of healthcare access, her first-hand experiences have fueled her commitment to high-quality science but also to making sure the science is used and understood by communities across the globe.



Cathie T. Siders, PhD

Dr. Siders provides consultation to leaders in academic medicine and science. Her professional experience reflects strong interest in the issues effecting the lives of women leaders in such organizations. In response to current events, Dr. Siders's consulting practice targets three leadership themes—leading an organization under duress, supporting the individual executive's resilience, and guiding leaders as they support and sustain resilience in their direct reports. Dr. Siders takes great pride in being a long-time friend of ELAM.

Nancy Spector, MD, (ELAM '10)

Executive Director, ELAM Program

Donna McNelis, PhD

Chief Operating Officer, ELAM and ELH Programs

Erika Brown, PhD, (ELAM '15)

Associate Director, ELAM Program

Sara Jo Grethlein, MD, MBA, (ELAM '07)

Associate Director, ELH Program

Leon McCrea II, MD, MPH, FAAFP

Associate Director, Allyship at ELAM Program

Joyce M. Collins, MA

Associate Director, Communications & Coalitions

Takiyah Fortune

Finance Coordinator

Brian Kall

Senior Director, Strategic Operations and Logistics

Shermika Lightfoot

Associate Director of Operations

Barbara Overholser, MA

Director of Stakeholder Engagement and Communications

Indee Phillpotts

Program Coordinator

Clare Reckner

Program Manager

Katie Stanton

Executive Assistant

Kristan M. Stengel, MS

Communications Analyst



anniversary planning committee members

Committee Co-Chairs

Ann Brown, MD, MHS (ELAM '09)

Michaela Jansen, PharmD, PhD (ELAM '24)

Committee Members

Denise Adams, MD (ELAM '16)

Linda Berardi-Demo, EdD

Joyce De Leo, PhD (ELAM '02)

Marissa Galicia-Castillo, MD (ELH '23)

Lindsey Grossman, MD (ELAM '98)

Wendy Hobson-Rohrer, MD, MSPH (ELAM '15)

Eve Kerr, MD, MPH (ELAM '11)

Sandhya Kortagere, PhD (ELAM '24)

Ana López Fuentes, DMD, MPH (ELAM '08)

Ana Maria Lopez, MD, MPH, FACP (ELAM '08)

Michele Lossius, MD (ELH '24)

Donna Parker, MD (ELAM '21)

Susan Pollart, MD, MS (ELAM '17)

Erin Pukenas, MD (ELAM '23)

Judith Regensteiner, PhD (ELAM '13)

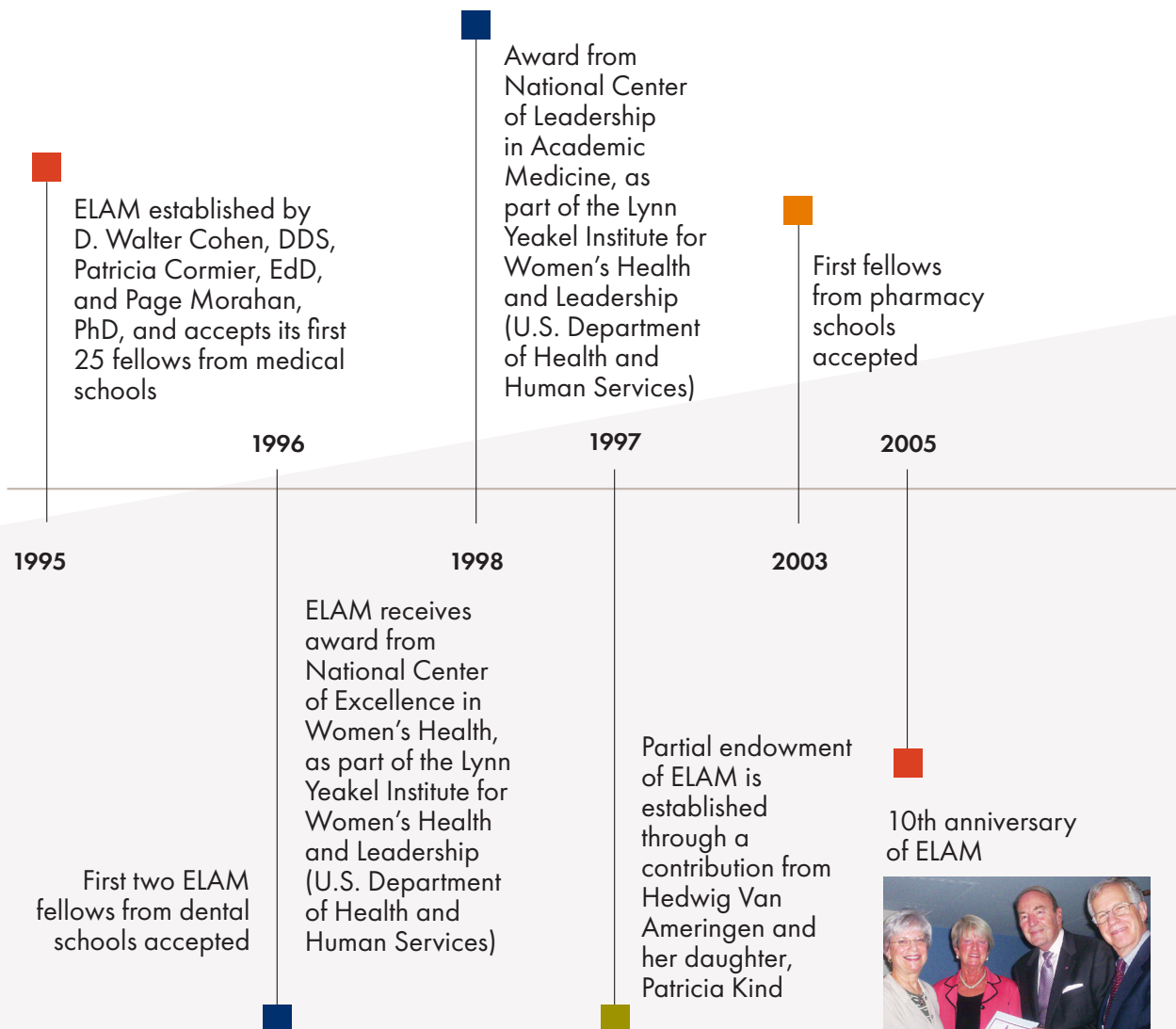
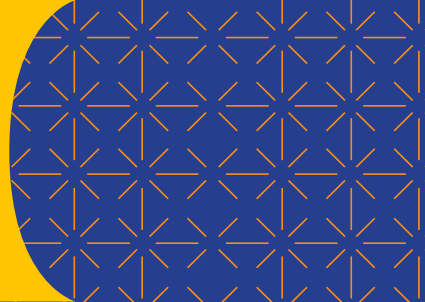
Abby Spencer, MD, MS (ELAM '22)

Elizabeth Travis, PhD (ELAM '00)

Pamela Zarkowski, JD, MPH (ELAM '97)

highlights

from the past 30 years



2006

ELAM receives Association of American Medical Colleges' Women in Medicine Leadership Development Award

ELAM accepts first Fellows from schools of public health

2010

First fellows from international medical schools accepted

2012

ELATES program established

ELAM receives American Dental Education Association Gies Award for Outstanding Vision, Public or Private

2015

2016

ELAM's current executive director, Nancy D. Spector, MD, begins her role



2020

ELAM celebrates 25th anniversary

2022

Executive Leadership in Health Care (ELH) program established

2025

2025

Allyship at ELAM established

ELAM celebrates 30th anniversary



1995 – 1996

Joanna Cain, M.D.
 PonJola Coney, M.D.
 Margaret Dunn, M.D., M.B.A.
 Martha Elks, M.D., Ph.D.
 Lorraine Fitzpatrick, M.D.
 Clair Francomano, M.D.
 Deborah German, M.D.
 Nancy Hardt, M.D.
 Susan Johnson, M.D.
 Rashida Khakoo, M.D.
 Suzanne Landis, M.D.
 Janis Letourneau, M.D.
 Mariana Morris, Ph.D.
 Deborah Nelson, Ph.D.
 M. O'Dorisio, M.D., Ph.D.
 Cynthia Olsen, M.D.
 Stephanie Seremetis, M.D.
 Darlene Shaw, Ph.D.
 Kailie Shaw, M.D.
 Elizabeth Sherertz, M.D., M.B.A.
 Susan Skochelak, M.D., M.P.H.
 Angelina Trujillo, M.D.
 Patience White, M.D., M.A.
 Wendy Wolf, M.D., M.P.H.

1996 – 1997

Nancy Adams, M.D.
 Susan Brozena, M.D.
 G. Cather, M.D.
 Lourdes Corman, M.D.
 Shermine Dabbagh, M.D.
 Suanne Daves, M.D.
 Gilla Davis, M.D.
 Julie Djeu, Ph.D.
 Mary Dombovy, M.D., M.S.H.S.
 Julie Freischlag, M.D.
 Linda Fried, M.D., M.P.H.
 Susan Frost, Ph.D.
 Vanessa Gamble, M.D., Ph.D.
 Laurie Gaspar, M.D.
 Ellen Ginzler, M.D., M.P.H.
 Donna Hammond, Ph.D.
 Fran Kaiser, M.D.
 Margaret Kripke, Ph.D.
 Jennifer Larsen, M.D.
 Roberta Locko, M.D.
 Christine Matson, M.D.
 Lynn Moscinski, M.D.
 Kathleen Nelson, M.D.
 Lois Nora, M.D., J.D., M.B.A.

Sara Rusch, M.D.
 Kiran Sagar, M.D.
 Barbara Schindler, M.D.
 Lisa Tedesco, Ph.D.
 Pamela Zarkowski, J. D., M.P.H.

1997 – 1998

Phyllis Beemsterboer, M.S., Ed.D.
 Barbara Bregman, Ph.D.
 Wendy Brown, M.D., M.P.H.
 Joanne Conroy, M.D.
 Sandra Degen, Ph.D.
 Marilyn Frederiksen, M.D.
 Lindsey Grossman, M.D.
 Loreen Herwaldt, M.D.
 Leslie Kahl, M.D.
 Kim Kahng, M.D.
 Kathleen Kim, M.D., M.P.H.
 Mary Klotman, M.D.
 Nancy Lane, M.D.
 Lorrie Langdale, M.D.
 Kristine Lohr, M.D., M.S.
 Nancy Mann, M.D.
 Karen Marcante, M.D.
 Lynn Matrisian, Ph.D., M.B.A.
 Sarah Morgan, M.D., M.S., R.D.
 Ann Ouyang, M.D.
 Maria Padilla, M.D.
 Vivian Reznik, M.D., M.P.H.
 Kathleen Szama, M.D., J. D.
 Sally Shumaker, Ph.D.
 Patricia Simmons, M.D.
 Roberta Sonnino, M.D.
 Alice Speer, M.D.
 Louise Strong, M.D.
 Marijo Tamburrino, M.D.
 Sharon Turner, D.D.S., J.D.
 Lynn Wecker, Ph.D.

1998 – 1999

Christine Abrass, M.D.
 Penny Asbell, M.D.
 Sally Atherton, Ph.D.
 Linda Austin, M.D.
 Barbara Bayer, Ph.D.
 Colleen Brophy, M.D.
 Ann Chinnis, M.D., M.S.H.A.
 Catherine deVries, M.D.
 Rosemarie Fisher, M.D.
 Valerie Gilchrist, M.D.
 Marla Gold, M.D.
 Rose Goldstein, M.D., C.M.

Paula Hillard, M.D.
 Lydia Howell, M.D.
 Renee Jenkins, M.D.
 Sarah Kilpatrick, M.D., Ph.D.
 Patricia Kokotailo, M.D., M.P.H.
 Katherine Loveland, Ph.D.
 Kathleen McCarroll, M.D.
 Kathleen McIntyre-Seltman, M.D.
 Amie McLain, M.D.
 Catherine Otto, M.D.
 Lynda Powell, Ph.D.
 Susan Reisine, Ph.D.
 Carol Rumack, M.D.
 Laura Schweitzer, Ph.D.
 Debra Schwinn, M.D.
 Shumei Sun, Ph.D.
 Carolyn Voss, M.D.
 Leigh Washburn, Ph.D.
 Karen West, D.M.D., M.P.H.
 Judith Westman, M.D.
 Earnestine Willis, M.D., M.P.H.
 Katherine Wisner, M.D., M.S.

1999 – 2000

Linda Adkison, Ph.D.
 Valerie Arkoosh, M.D., M.P.H.
 Virginia Broudy, M.D.
 Halina Brukner, M.D.
 Patricia Butler, M.D.
 Ellen Clayton, M.D., J.D.
 Jannette Collins, M.D., M.Ed.
 Kathryn Cunningham, Ph.D.
 Simin Dadparvar, M.D.,
 FACNM, FACR
 Bonnie Dattel, M.D.
 Kathleen Digre, M.D.
 Theola Douglas, D.D.S., M.B.A.
 Eva Feldman, M.D., Ph.D.
 Jeanne Heard, M.D., Ph.D.
 Florence Hutchison, M.D.
 Lisa Kaplowitz, M.D., M.S.H.A.
 Helen Li, M.D.
 Brenda Lonsbury-Martin, Ph.D.
 Linda Lucas, M.D.
 Mary Martin, D.D.S., M.Ed.
 Valerie Murrah, D.M.D., M.S.
 Kathy Porter, M.D., M.B.A.
 Marlene Rabinovitch, M.D.
 Carolyn Reed, M.D.
 Sophia Socaris, M.D.
 Marilyn Telen, M.D.
 Mary Townsley, Ph.D.

Cynthia Tracy, M.D.
 Elizabeth Travis, Ph.D.
 Margaret Turk, M.D.
 Kathleen Weatherstone, M.D.
 Laura Wexler, M.D.
 Leslie Will, D.M.D., M.S.D.
 Janet Williams, M.D.
 Sandra Willsie, D.O., M.A. *

2000 – 2001

Miriam Blitzer, Ph.D.
 Soo Borson, M.D.
 Lisa Bryant, M.D.
 Katherine Cauley, Ph.D.
 Cheryl Coffin, M.D.
 Angela Diaz, M.D.
 Cherae Farmer-Dixon,
 D.D.S., M.S.P.H.
 Jane Fitch, M.D.
 Hope Haefner, M.D.
 Eve Higginbotham, M.D.
 Maria Hordinsky, M.D.
 Victoria Judd, M.D.
 Barbara Kahn, M.D.
 Sharon Kaminer, M.D., M.H.S.
 Bronya Keats, Ph.D.
 Lela Lee, M.D.
 Theresa Lura, M.D.
 Marilyn Marx, M.D., M.B.A.
 M. Menard, M.D., M.P.H.
 Dawn Milliner, M.D.
 Ardythe Morrow, Ph.D.
 Donna Murasko, Ph.D.
 Mary Nettleman, M.D., M.S.
 Debra Romberger, M.D.
 Teresa Rummans, M.D.
 Maryjean Schenk, M.D.,
 M.P.H., M.S.
 Susan Shurin, M.D.
 Maria Soto-Greene, M.D., MS-HPED
 Lori Stark, Ph.D.
 Denise Tate, Ph.D., A.B.P.P.
 Patricia Thomas, M.D.
 Ann Thompson, M.D.
 Ann Thor, M.D.
 Gretchen Tietjen, M.D.
 Nanci Tofsky, D.D.S.
 Janet Townsend, M.D.
 Amparo Villablanca, M.D.
 Elizabeth Wagar, M.D.
 Sharon Whiting, M.B.B.S.
 Pam Williams, M.D.
 Barbara Wittebort, Ph.D.

2001 – 2002

Elizabeth Allen, M.D.

Annlouise Assaf, Ph.D.
 Ann Bonham, Ph.D.
 Judith Buchanan, Ph.D., D.M.D.
 Yvonne Chalkley, D.D.S.,
 M.S., Ph.D.
 Nancy Chescheir, M.D.
 Amanda Clark, MD, MCR,
 NCMF
 Jane Clifford, Ph.D.
 Deborah Cotton, M.D., M.P.H.
 Joyce De Leo, Ph.D.
 Gail D'Onofrio, M.D., M.S.
 Betty Drees, M.D.
 Connie Drisko, D.D.S.
 Marilyn Escobedo, M.D.
 Jacqueline Feldman, M.D.
 Karen Fields, M.D.
 Michele Follen, M.D., Ph.D.
 Susan Galandiuk, M.D.
 Tana Grady-Weliky, M.D.
 Cornelia Graves, M.D.
 Martha Grayson, M.D.
 Kristene Gugliuzza, M.D.
 Michele Halyard, M.D.
 Brenda Hoffman, M.D.
 Debra Klamen, M.D., M.H.P.E.
 Uma Kotagal, M.B.B.S., M.Sc.
 Claudine Legault, Ph.D.
 Janet McElhaney, M.D.
 Ana Murphy, M.D.
 Mary Ann Myers, M.D.
 J. Nelson, M.D.
 Paula O'Neill, Ed.D.
 Rebecca Pauly, M.D.
 Shelia Price, D.D.S., Ed.D.
 Karen Sanders, M.D.
 Jill Siegfried, Ph.D.
 Laura Siminoff, Ph.D.
 Anne Taylor, M.D.
 Luanne Thorndyke, M.D.
 Margaret Uthman, M.D.
 Carolyn Westhoff, M.D.
 Jeanine Wiener-Kronish, M.D.
 Karen Zier, Ph.D.

2002 – 2003

Rebecca Bahn, M.D.
 L'Tanya Bailey, D.D.S., M.S.
 Abbey Berenson, M.D.
 Carol Bernstein, M.D.
 Brigitte Bonin, M.D.
 Anne Burdick, M.D., M.P.H.
 Kathleen Clem, R.N., B.S.N., M.D.
 Mary Coleman, M.D., Ph.D.
 Colleen Conry, M.D.
 Kim Ephgrave, M.D.

Vicky Evangelidis-Sakellson,
 D.D.S., M.P.H.
 Leslie Fuchs, Ph.D.
 Linda Giudice, M.D., Ph.D.
 Barbara Graves, Ph.D.
 Ellen Gritz, Ph.D.
 Martha Hargraves, Ph.D., M.P.H.
 Katherine Heilpern, M.D.
 Denise Kassebaum, D.D.S.,
 M.S.
 Jane Koehler, M.D.
 Maria Kolar, M.D.
 Omofolasade Kosoko-Lasaki, M.D.,
 M.S.P.H., M.B.A.
 Pascale Lane, M.D.
 Debra Leonard, M.D., Ph.D.
 Julia Lewis, M.D.
 Diane Magrane, M.D.
 Carolyn Meltzer, M.D.
 Karin Muraszko, M.D.
 Victoria Norwood, M.D.
 Elizabeth Ofili, M.D., M.P.H.
 Olufunmilayo Olopade, M.B.B.S.
 Vijay Rao, M.D.
 Michelle Riba, M.D., M.S.
 Ann Richmond, Ph.D.
 Nanette Schwann, M.D.
 Jane Schwebke, M.D.
 Gabriele Sonnenberg, M.D.
 Aradhana Sood, M.D., M.S.H.A.
 Lisa Staiano-Coico, Ph.D.
 Margaret Stuber, M.D.
 Linda Toth, D.V.M., Ph.D.
 Belinda Vail, M.D., M.S.
 Mary Lou Voytko, Ph.D.
 Sandra Weller, Ph.D.
 Marilyn Woolfolk, M.S., D.D.S.,
 M.P.H.

2003 – 2004

Sharon Anderson, M.D.
 Susan Blaney, M.D.
 Angela Caliendo, M.D., Ph.D.
 Linda Carson, M.D.
 Jocelyn Chertoff, M.D.
 Linda Crnic, Ph.D.
 Kathleen Egli, M.D.
 Diana Farmer, M.D.
 Karen Freund, M.D., M.P.H.
 Karen Gale, Ph.D.
 Toni Ganzel, M.D., M.B.A.
 Lois Geist, M.D.
 Carole Hanes, D.M.D.
 Sandra Harris-Hooker, Ph.D.
 Mary Hoy, Ph.D.
 Susan Hutson, Ph.D.

Betty Anne Johnson, M.D., Ph.D.
Nadine Kaslow, Ph.D., A.B.P.P.
Lois Killewich, M.D., Ph.D.
Terri Kinzy, Ph.D.
Elisabeth Kunkel, M.D.
Cathy Lazarus, M.D.
Susan LeDoux, Ph.D.
Vivian Lewis, M.D.
Janet Lindemann, M.D., M.B.A.
Carol Lippa, M.D.
Meredith Marks, M.D., M.Ed.
Mary Faith Marshall, Ph.D.
Carolyn Mazure, Ph.D.
Valerie Montgomery Rice, M.D.
Susan Murin, M.D., M.Sc.
Carol Newlon, Ph.D.
Kim Olthoff, M.D.
Ann Otto, Ph.D.
Ana Pajor, Ph.D.
Owen Phillips, M.D.
Etta Pisano, M.D.
Marsha Pyle, D.D.S., M.Ed.
Ilka Rios, D.M.D., M.S.
M. Shear, M.D.
Marca Sipski, M.D.
Gail Slap, M.D., M.S.
M. Christine Stock, M.D.
Tracey Weigel, M.D.
Suzanne White, M.D.

2004 – 2005

Stephanie Abbuhl, M.D.
Kathryn Atchison, D.D.S.,
M.P.H.
Juliana Barr, M.D.
Ruth Benca, M.D., Ph.D.
Kathleen Brady, M.D., Ph.D.
Claire Brindis, D.P.H.
Karen Calhoun, M.D.
Margaretha Casselbrant,
M.D., Ph.D.
Marcelle Cedars, M.D.
Setsuko Chambers, M.D.
Nancy Connell, Ph.D.
Barbara Cromer, M.D.
Frances Dunston, M.D., M.P.H.
Diane Ede-Nichols,
D.M.D., M.H.L.
Renee Fox, M.D.
Amy Goldberg, M.D.
Maureen Goodenow, Ph.D.
Carmen Green, M.D.
Alison Hall, Ph.D.
Diane Hartmann, M.D.
Catherine Kuhn, M.D.
Linda Lawrence, M.D.

Margaret Lawson, M.D., M.Sc.
Deborah Lightner, M.D.
Maria Lima, Ph.D.
Guillermina Lozano, Ph.D.
Martha McGrew, M.D.
Dianna Milewicz, M.D., Ph.D.
Mary Murray, M.D.
Ana Núñez, M.D.
Amy O'Brien-Ladner, M.D.
Sandra O'Neal, D.M.D., M.S.
Valerie Opipari, M.D.
Mary Otterson, M.D.
Pamela Overman, B.S.D.H.,
M.S., Ed.D.
Leslie Parise, Ph.D.
Jan Patterson, M.D.
Patti Patterson, M.D., M.P.H.
Arti Prasad, M.D.
Jan Richardson, P.T.,
Ph.D., O.C.S.
Virginia Shepherd, Ph.D.
Cecile Skinner, D.D.S., Ph.D.
Cheryl Watson, Ph.D.
Michelle Whitehurst-Cook, M.D.
Martha Zeiger, M.D.

2005 – 2006

Marjorie Ariano, Ph.D.
Mary Beckerle, Ph.D.
Maria Britto, M.D., M.P.H.
Nancy Brown, M.D.
Rachel Brown, M.B.B.S.
Martha Brown, M.D.
Latha Chandran, M.D., M.P.H.
Sonia Crandall, Ph.D., M.S.
Deborah Deas, M.D., M.P.H.
Phyllis Dennerly, M.D.
Susan Edwards, M.D.
Elise Eisenberg, D.D.S., M.A.
Susan Essock, Ph.D.
Brenda Fahy, M.D.
Janet Fleetwood, Ph.D.
Lily Garcia, D.D.S., M.S.
Lisa Guay-Woodford, M.D.
Margaret Gyetko, M.D.
Katherine Hartmann, M.D., Ph.D.
Karen Hendricks-Múñoz,
M.D., M.P.H.
Mary Casey Jacob, Ph.D.
Karen Johnston, M.D., M.Sc.
Susan Kornstein, M.D.
Razelle Kurzrock, M.D.
Carol Lefebvre, D.D.S., M.S.
Catherine Lucey, M.D.
Simin Meydani, D.V.M., Ph.D.
Jill Moormeier, M.D., M.P.H.

Karen Novielli, M.D.
Gabriella Pridjian, M.D., M.B.A.
Nancy Raymond, M.D.
Kathryn Reed, M.D.
Susan Rosenthal, Ph.D.
Joan Schiller, M.D.
Rosalyn Scott, M.D., M.S.H.A.
Kathleen Scotto, Ph.D.
Mary-Ann Shafer, M.D.
Ruth Slack, Ph.D.
Ellen Tedaldi, M.D.
Dena Townner, M.D.
Jacqueline Tulsy,
Hannah Valentine, M.D.,
M.R.C.P.
Georgia Wiesner, M.D.
Catherine Woodman, M.D.
Nancy Zahniser, Ph.D.

2006 – 2007

Donna Arnett, Ph.D., M.S.P.H.
Suzanne Barbour, Ph.D.
Iris Borowsky, M.D., Ph.D.
Allison Brashear, M.D.
Ferne Braveman, M.D.
Robin Brey, M.D.
Sally Camper, Ph.D.
Joan Cangiarella, M.D.
Mary Carnes, M.D., M.S.
Karen Colley, Ph.D.
Doris Cope, M.D.
Giselle Corbie-Smith, M.D., M.Sc.
Linda Cottler, Ph.D.,
M.P.H., F.A.C.E.
Myriam Curet, M.D.
Anne Curtis, M.D.
Diane Davey, M.D.
Cheryl DeVore, R.D.H.,
M.S., J.D.
Teresa Dolan, D.D.S., M.P.H.
Mona Fouad, M.D., M.P.H.
Barbara Greenberg, M.
Sc., Ph.D.
Sara Grethlein, M.D., FACP
Cheryl Hanau, M.D.
Jeri Hepworth, Ph.D.
Joanne Hilden, M.D.
Robin Jarrett, Ph.D.
Judith Jones, D.D.S., M.P.H.
Cynthia Jumper, M.D., M.P.H.
Ella Kazerooni, M.D.
Judy Kersten, M.D.
Janice Lage, M.D.
Veronica Mallett, M.D.
Martha Medrano, M.D., M.P.H.
Joyce Mitchell, Ph.D.

Alicia Monroe, M.D.
 Wendy Mouradian, M.D.
 Aina Puce, Ph.D.
 Michele Pugnaire, M.D.
 Sandra Quinn, Ph.D.
 Veronique Roger, M.D., M.P.H.
 Shelley Smith, Ph.D.
 Linda Speer, M.D.
 Carol Terregino, M.D.
 Debara Tucci, M.D., M.S., M.B.A.
 Brenda Wilson, M.B.Ch.B., M.Sc.
 Anne Wright, Ph.D.
 Helen Yin, Ph.D.
 Zofia Zukowska, M.D., Ph.D.
 Mary Zutter, M.D.

2007 – 2008

Lucile Adams-Campbell, Ph.D.
 Shari Barkin, M.D., M.S.H.S.
 Miriam Bar-on, M.D.
 Cynthia Beeman, D.D.S., Ph.D.
 Emelia Benjamin, M.D., Sc.M.
 Vera Bittner, M.D., M.S.P.H.
 Jan Busby-Whitehead, M.D.
 Carrie Byington, M.D.
 Diana Cardenas, M.D.
 Baretta Casey, M.D., M.P.H.
 Archana Chatterjee, M.D., Ph.D.
 Ellen Cosgrove, M.D., FACP
 Mary Anne Delaney, M.D.
 Elizabeth Drum, M.D.
 Barbara Ducatman, M.D.
 Karen Emmons, Ph.D.
 Stacie Geller, Ph.D., M.P.A.
 Lynn Gordon, M.D., Ph.D.
 Bonnie Green, Ph.D.
 Janice Herbert-Carter,
 M.D., M.G.A.
 Sheryl Heron, M.D., M.P.H.
 Sharon Hull, M.D., M.P.H.
 Jesse Joad, M.D., M.S.
 Julia Johnson, M.D.
 Veronnie Jones, M.D.,
 Ph.D., M.S.P.H.
 Janice Knebl, D.O., M.B.A..
 Leslie Kohman, M.D.
 Jean Kutner, M.D., M.S.P.H.
 Katherine Liu, M.D.
 Ana Maria Lopez, M.D.,
 M.P.H., FACP
 Ana Lopez Fuentes, D.M.D.,
 M.P.H.
 Robin Miskimins, Ph.D.
 Geneviève Moineau, M.D.
 Mary Moran, M.D.
 Debra Perina, M.D.

Andrea Pozez, M.D.
 Victoria Seewaldt, M.D.
 Rache Simmons, M.D.
 Mary Spires, M.D., M.A.
 Margaret Steele, M.D.
 Lisa Sullivan, Ph.D.
 Dale Vidal, M.D.
 Janet Williams, M.D.
 Marsha Wills-Karp, Ph.D.
 Patricia Winokur, M.D.
 Jennifer Woodward, Ph.D.
 Sherry Wren, M.D.
 Dani Zander, M.D.

2008 – 2009

Sandra Andrieu, Ph.D.
 Kathy Baumgartner, Ph.D.
 Diana Bianchi, M.D.
 Nina Bickell, M.D., M.P.H.
 Joann Bodurtha, M.D., M.P.H.
 Linda Boyd, D.O.
 Carol Bradford, M.D.
 Ann Brown, M.D., M.H.S.
 Deborah Burnet, M.D.
 Sharon Dent, Ph.D.
 Robin Detering, M.D.
 Beth Drolet, M.D.
 Helen Evans, M.D., Ph.D.
 Sydney Evans, V.M.D., M.S.
 Mindy Fain, M.D.
 Susan Fisher, Ph.D.
 Ellen Gold, Ph.D.
 Kathy Griendling, Ph.D.
 Maryellen Gusic, M.D.
 Ellen Hartenbach, M.D.
 Susan Harvey, M.D.
 Gurjit Hershey, M.D., Ph.D.
 Harriet Hopf, M.D.
 Carlayne Jackson, M.D.
 Marjorie Jenkins, M.D.
 Leslie Karns, D.M.D.
 Deborah Larsen, Ph.D., P.T.
 Sharon Levine, M.D.
 Sarah Lisanby, M.D.
 Susan Mayne, Ph.D.
 Jane McGowan, M.D.
 Georgeann McGuinness, M.D.
 Edith Mitchell, M.D.
 Martha Morris, Sc.D.
 Leslie Morrison, M.D.
 Mary Ottolini, M.D., M.P.H.
 Kamala Patel, Ph.D.
 Melanie Peterson, D.M.D., M.B.A.
 Susan Redline, M.D., M.P.H.
 Gloria Richard-Davis, M.D.
 Lynne Richardson, M.D.

Doris Rubio, Ph.D.
 Maria Ryan, D.D.S., Ph.D.
 Paula Schomberg, M.D.
 Elizabeth Seaquist, M.D.
 Paula Termuhlen, M.D.
 Ann Tilton, M.D.
 Lynne Wagenknecht, Dr.P.H.

2009 – 2010

Meenakshy Aiyer, M.D.
 Christine Arenson, M.D.
 Jill Baren, M.D., M.S, M.B.A.,
 F.A.C.E.P., F.A.A.P.
 Yolanda Becker, M.D.
 Vivian Bellofatto, Ph.D.
 M. Boechat, M.D.
 Deborah Bowen, Ph.D.
 Brenda Bucklin, M.D.
 Penny Castellano, M.D.
 Anees Chagpar, M.D., M.Sc.,
 M.A., M.P.H.
 Heidi Chumley, M.D.
 Deborah DeMarco, M.D.
 Luisa DiPietro, D.D.S., Ph.D.
 Patricia Donohoue, M.D.
 Rena D'Souza, D.D.S., M.S., Ph.D.
 Margarita Dubocovich, Ph.D.
 Patricia Emmanuel, M.D.
 Karen Fagan, M.D.
 Patricia Gallagher, Ph.D., P.E.
 Jennifer Havens, M.D.
 Deborah Helitzer, Sc.D.
 Shuk-mei Ho, Ph.D.
 Jean Jacob, Ph.D.
 Joanne Jordan, M.D., M.P.H.
 Adina Kalet, M.D., M.P.H.
 Nadine Katz, M.D.
 Norma Kenyon, Ph.D.
 Abigail Klemsz, M.D., Ph.D.
 Elizabeth Kovacs, Ph.D.
 Valerae Lewis, M.D.
 Alma Littles, M.D.
 Pauline Maki, Ph.D.
 Stephanie McClure, M.D.
 Diana Messadi, D.D.S., M.M.
 Sc., D.M.Sc.
 Janet Niemeier, Ph.D., A.B.P.P.
 Maureen Novak, M.D.
 Barbara Ostrov, M.D.
 Tina Palmieri, M.D.
 Katherine Paton, M.D.
 Elizabeth Petty, M.D.
 Donna Russo, Ph.D.
 Darshana Shah, Ph.D.
 Nancy Spector, M.D.
 Mary Stavropoulos, D.D.S.

Gyongyi Szabo, M.D., Ph.D.
Pamela Teaster, Ph.D.
Amanda Termuhlen, M.D.
Melanie Thomas, M.D., M.S.
Gail Tomlinson, M.D., Ph.D.
Elisabeth Van Bockstaele, Ph.D.
Monica Vetter, Ph.D.
Janice Wagner, D.V.M., Ph.D.
Debrah Wirtzfeld, M.D., CEC,
CCPE, ICD.D,
Terri Young, M.D.

2010 – 2011

Julia Andrieni, M.D. FACP
Nancy Arbree, D.D.S.
Sandra Burge, Ph.D.
Elizabeth Burnside, M.D., M.P.H.
Melanie Cushion, Ph.D.
Mary Dankoski, Ph.D.
Elizabeth Datner, M.D.
Sherin Devaskar, M.D.
Geri Donenberg, Ph.D.
Anna Dongari-Bagtzoglou,
D.D.S., Ph.D.
Nisha D'Silva, B.D.S.,
M.S.D., Ph.D.
Lisa Elferink, Ph.D.
Sheila Ellis, M.D.
Elena Fuentes-Afflick,
M.D., M.P.H.
Laura Goetzl, M.D., M.P.H.
Gayle Gordillo, M.D.
Eleanor Harris, M.D.
Tina Hartert, M.D., M.P.H.
Mary Hooks, M.D., M.B.A.
Susan Hyman, M.D.
Betsy Jones, Ed.D.
Anne Kenny, M.D.
Eve Kerr, M.D., M.P.H.
Lian Li, Ph.D.
Katherine Luzuriaga, M.D.
Jeanette Magnus, M.D., Ph.D.
Michele Marcolongo, Ph.D.
Shannon Marquez, Ph.D.,
M.Eng.
Christine Marx, M.D., M.A.
Carol Mason, M.D.
Susan Nedorost, M.D.
Lucia Notterpek, Ph.D.
Ann-Christine Nyquist, M.D.,
M.S.P.H.
Susan Pannullo, M.D.
Susan Pepin, M.D.
Linda Perkowski, Ph.D.
Elizabeth Puscheck, M.D.,
M.S.

Ann Reed, M.D.
Lesley Regan, M.B.B.S., M.D., D.
Sc., FRCOG.
Fonda Robinson, D.M.D.
Valerie Romero-Leggott, M.D.
Susan Rosenthal, M.D., M.S.
Kathleen Ryan, M.D.
Marilyn Schapira, M.D.,
M.P.H.
Sylvia Smith, Ph.D.
Kim Smith-Whitley, M.D.
Mary Stephenson, M.D.,
M.Sc.
Jill Suttles, Ph.D.
Lynn Tanoue, M.D.
Joanne Todesco, M.D.
Omaira Velazquez, M.D.
Ora Weisz, Ph.D.
Gretchen Wells, M.D., Ph.D.
Cynthia Wright, Ph.D.

2011 – 2012

Evaline Alessandrini, M.D., M.S.C.E.
Bettina Beech, Dr.P.H., M.P.H.
Wendy Brewster, M.D., Ph.D.
Erica Brownfield, M.D.
Evalina Burger, B.Med.Sc., MBCh.B.,
M.Med.
Carmen Canavier, Ph.D.
Adela Casas-Melley, M.D.
Judie Charlton, M.D.
Constance Chu, M.D.
Nily Dan, Ph.D.
Sylvia Daunert, Ph.D.
Sarah Dry, M.D.
Karin Esposito, M.D., Ph.D.
Marquetta Faulkner, M.D.
Margherita Fontana, D.D.S.,
Ph.D.
Cheryl Gore-Felton, Ph.D.
Wendy Hansen, M.D.
Zena Leah Harris, M.D.
Petra Kaufmann, M.D., M.Sc.
Karen Kaul, M.D., Ph.D.
Ellie Kelepouris, M.D.
Melina Kibbe, M.D.
Jean King, Ph.D.
Michele Kipke, Ph.D.
Colleen Koch, M.D., M.S.
Deborah Levine, M.D.
Karen Lu, M.D.
Tsveti Markova, M.D.
Madhu Mazumdar, Ph.D.
Susan McDaniel, Ph.D.
Amy McMichael, M.D.
A. Menko, Ph.D.

Olimpia Meucci, M.D., Ph.D.
Anne Mosenthal, M.D.
Anne Newman, M.D., M.P.H.
Joan Nichols, Ph.D.
Julie Panepinto, M.D., M.S.P.H.
Anna Pavlick, D.O.
Corinne Peek-Asa, M.P.H.,
Ph.D.
Marina Picciotto, Ph.D.
Elizabeth Pilcher, D.M.D.
J. Raj, M.D.
Jane Reusch, M.D.
Olga Rodriguez de Arzola, M.D.
Ellie Schoenbaum, M.D.
Paula Shireman, M.D.
Cathy Sila, M.D.
Meenakshi Singh, M.D.
Shyrl Sistrunk, M.D.
Nancy Thomas, M.D., Ph.D.
Karen Williams, Ph.D.
Bronwyn Wilson, M.D., M.P.H.,
M.S.
Ozlem Yilmaz, D.D.S., Ph.D.
Verna Yiu, M.D.

2012 – 2013

Aviva Abosch, M.D., Ph.D.
Marie Acierno, M.D.
Hanan Al-Kadri, M.D., Ph.D., M.Sc.,
H.P.E.
Julia Arnsten, M.D., M.P.H.
Judy Aschner, M.D.
Vimla Band, Ph.D.
Margaret Baron, M.D., Ph.D.
Sarah Berga, M.D.
Giulia Bonaminio, Ph.D.
Pamela Carmines, Ph.D.
Ilana Cass, M.D.
Yuhchyan Chen, M.D., Ph.D.
Janet de Groot, M.D.
Rinske de Leeuw, D.D.S., Ph.D.,
M.P.H.
Debra Diz, Ph.D.
Kelli Dunn, M.D.
Mercedes Falciglia, M.D.
Leslie Fall, M.D.
Marian Fitzgibbon, Ph.D.
Amy Fuchs, M.D.
Sabine Girod, M.D., D.D.S.,
Ph.D.
Evelyn Gopez, M.D.
Ellen Gravallese, M.D.
Yolangel Hernandez Suarez, M.D.,
M.B.A.
Kathryn Horn, M.D.
Ivonne Jimenez-Velazquez, M.D.

Donna Johnson, M.D.
 Karen Kelly, M.D.
 Diane Krause, M.D., Ph.D.
 Deborah Kuhls, M.D.
 Rakhshanda Layeequr-Rahman,
 M.D.
 Cheryl Lee, M.D.
 Catherine Lynch, M.D.
 Monica Lypson, M.D.,
 M.H.P.E.
 Sharmila Makhija, M.D.,
 M.B.A.
 Melvina McCabe, M.D.
 Susan Moffatt-Bruce, M.D.,
 Ph.D., M.B.A.
 Carol Murdoch-Kinch, D.D.S.,
 Ph.D.
 Elizabeth Nelson, M.D.
 Shawna Nesbitt, M.D., M.S.
 Melinda Pettigrew, Ph.D.
 Judith Regensteiner, Ph.D.
 Brenda Roman, M.D.
 Ann Rosenthal, M.D.
 Kathryn Sandberg, Ph.D.
 Kathryn Schmitz, Ph.D., M.P.H.
 Christie Seibert, M.D.
 Caroline Shiboski, D.D.S., M.P.H.,
 Ph.D.
 Anne Simpson, M.D.
 Rebecca Slayton, D.D.S., Ph.D.
 Barbara Vickrey, M.D., M.P.H.
 Deborah Wing, M.D., MBA
 Cynthia Wong, M.D.

2013 – 2014

Marsha Anderson, M.D.
 Gladys Ayala, M.D., M.P.H.
 Lynne Bemis, Ph.D.
 Lori Boardman, M.D., Sc.M.
 Maria Bottazzi, Ph.D.
 Diane Braza, M.D.
 Yvette Calderon, M.D., M.S.
 Ruth Carlos, M.D.
 Mercedes Carnethon, Ph.D.
 Millicent Channell, D.O.
 Linda Chaudron, M.D., M.S.
 Susan Chubinskaya, Ph.D.
 Lorraine Conroy, Sc.D.
 Cynthia Dunbar, M.D.
 Francesca Dwamena, M.D., M.S.
 Helen Egger, M.D.
 Dee Fenner, M.D.
 Digna Forbes, M.D.
 Jeanne-Marie Guise, M.D.,
 M.P.H.
 Barbara Hempstead, M.D.,

Ph.D.
 Cherri Hobgood, M.D.
 Debra Houry, M.D., M.P.H.
 Denise Hynes, Ph.D., M.P.H.,
 R.N.
 Sharon Inouye, M.D., M.P.H.
 Beth Kirkpatrick, M.D.,
 D.T.M.H.
 Anh Le, D.D.S., Ph.D.
 Janice Lee, D.D.S., M.D., M.S.
 Sharon Lehman, M.D.
 Jennifer Lodge, Ph.D.
 Ambika Mathur, Ph.D.
 Sarah Millar, Ph.D.
 Eileen Moser, M.D., M.H.P.E.
 Leigh Neumayer, M.D., M.S.
 Anuradha Paranjape, M.D.,
 M.P.H.
 Tassy Parker, Ph.D., R.N.
 Elizabeth Peck, M.D.
 Irina Petrache, M.D.
 Ismene Petrakis, M.D.
 Carla Pugh, M.D., Ph.D.
 Jane Reckelhoff, Ph.D.
 Sheila Riggs, D.D.S., D.M.Sc.
 Monica Shaw, M.D.
 Elizabeth Shenkman, Ph.D.
 Melissa Simon, M.D., M.P.H.
 Maureen Smith, M.D., Ph.D.,
 M.P.H.
 Anna Spagnoli, M.D.
 Tamara Thomas, M.D.
 Debra Waldron, M.D., M.P.H.
 Leslie Walker-Harding, M.D.
 Karen Williams, Ph.D.
 Yolanda Wimberly, M.D.,
 M.Sc.
 Shanta Zimmer, M.D.

2014 – 2015

Eva Aagaard, M.D.
 Eliana Amaral, M.D., Ph.D.
 Susan Anderson, M.D.
 Jessica Bienstock, M.D., M.P.H.
 Diane Bodurka, M.D., M.P.H.
 Adrienne Bonham, M.D.
 Marie Borum, M.D.,
 Ed.D., M.P.H.
 Chantal Brazeau, M.D.
 Erika Brown, Ph.D.
 Vivian Budnik, Ph.D.
 Wendy Chapman, Ph.D.
 Tracie Collins, M.D., M.P.H.
 Tamera Coyne-Beasley, M.D.,
 M.P.H.
 Chinazo Cunningham, M.D.

Vani Dandolu, M.D., M.P.H.,
 M.B.A.
 Lisa Edelmann, Ph.D.
 Cynthia Epperson, M.D.
 Monica Farley, M.D.
 Geraldine Fox, M.D., M.H.P.E.
 Priscilla Furth, M.D.
 Mary Gallant, Ph.D., M.P.H.
 Nisha Garg, Ph.D.
 Jane Gibson, Ph.D.
 Mary Hawn, M.D., M.P.H.
 Wendy Hobson-Rohrer, M.D.,
 M.S.P.H.
 Kimberly Hoffman, Ph.D.
 Terrie Inder, M.D., Ph.D.
 Lynnea Johnson, Ph.D.
 Janet Jokela, M.D., M.P.H.
 Marcia Katz, M.D.
 Rainu Kaushal, M.D., M.P.H.
 Karen Kim, M.D.
 Mary Lee, M.D.
 Lorelei Lingard, Ph.D.
 Robinna Lorenz, M.D., Ph.D.
 Lucinda Lyon, R.D.H., D.D.S.,
 Ed.D.
 Beth Malow, M.D., M.S.
 Patricia Manning-Courtney, M.D.
 Barbara Miller, M.D.
 Amy Murtha, M.D.
 Susan Perlis, Ed.D.
 Carrie Redlich, M.D., M.P.H.
 Cynthia Reyes, M.D.
 Taylor Riall, M.D., Ph.D.
 Hope Ricciotti, M.D.
 Pamela Sass, M.D.
 Susan Schultz, M.D.
 Angela Sharkey, M.D.
 Martha Tingen, Ph.D.
 Ezgi Tiryaki, M.D.
 Consuelo Wilkins, M.D. M.S.
 Amy Williams, M.D.
 Jennifer Wisdom, Ph.D., M.P.H.

2015 – 2016

Denise Adams, M.D.
 Christine Albert, M.D., M.P.H.
 Jennifer Bailit, M.D., M.P.H.
 Beatrice Beck Schimmer, M.D.
 Shilpa Buch, Ph.D.
 Nicoleta Bugnariu, P.T., Ph.D.
 Julie Byerley, M.D., M.P.H.
 Diana Callender, M.B.B.S.
 Kimberle Chapin-Robertson, M.D.
 Joanna Chikwe, M.D.
 Elizabeth Chrischilles, Ph.D.
 Colleen Clancy, Ph.D.

Loretta Cordova de Ortega, M.D.
 Stephanie Davis, M.D.
 Georgia Dounis, D.D.S., M.S.
 Jannette Dufour, Ph.D.
 Elizabeth Ellinas, M.D.
 Cristina Fernandez-Valle, Ph.D.
 Barbara Fivush, M.D.
 Wendy Frankel, M.D.
 Susan Furth, M.D., Ph.D.
 Iris Gibbs, M.D.
 Gabriella Gosman, M.D.
 Diane Harper, M.D., M.P.H., M.S.
 Ai-Xuan Holterman, M.D.
 Mira Irons, M.D.
 Barbara Jobst, M.D.
 Jessica Kandel, M.D.
 Emanuela Keller, M.D.
 Shou-Ling Leong, M.D.
 Mary Mahoney, M.D.
 Carol Mathews, M.D.
 Yvonne Michael, Sc.D., S.M.
 Kathleen Montone, M.D.
 Karen Murray, M.D.
 Katherine Poehling, M.D.,
 M.P.H.
 Sireesha Reddy, M.D.
 Vijaya Reddy, M.D., M.B.A.
 Caroline Richardson, M.D.
 Nicole Roberts, Ph.D.
 Yun Saksena, D.M.D.,
 M.M.Sc.
 Nanette Santoro, M.D.
 Judy Schaechter, M.D., M.B.A.
 Lynn Schnapp, M.D.
 Adriana Segura, D.D.S., M.S.
 Shubhra Shetty, M.D.
 Lori Shutter, M.D.
 Julie Ann Sosa, M.D., M.A.
 Sara Tariq, M.D.
 Areti Tillou, M.D., M.S.Ed.
 Sonal Tuli, M.D., M.Ed.
 Angela Tyner, Ph.D.
 Beth Virnig, Ph.D., M.P.H.

2016 – 2017

Nita Ahuja, M.D., M.B.A.
 Martha Alexander-Miller, Ph.D.
 Terri Ashmeade, M.D.
 Karen Basen-Engquist,
 Ph.D., M.P.H.
 Laura Borgelt, Pharm.D.
 Dawn Bragg, Ph.D.
 Cynthia Brown, M.D., M.S.P.H.
 Kathryn Cardarelli, Ph.D.
 Jenny Chang, M.D.
 Jennifer Christner, M.D.

Rebecca Cunningham, M.D.
 Nancy DeMore, M.D.
 Linda DiMeglio, M.D., M.P.H.
 Sharmila Dissanaik, M.D.
 Linda Duska, M.D., M.P.H.
 Corita Grudzen, M.D.
 Isabella Grumbach, M.D.,
 Ph.D.
 Ming Guo, M.D., Ph.D.
 Odette Harris, M.D., M.P.H.
 Alyssa Hasty, Ph.D.
 Christy Holland, Ph.D.
 Amy Holthouser, M.D.
 Jan Ching-Chun Hu, B.D.S.,
 Ph.D.
 Rebecca Jacobson, M.D., M.S.
 Narmin Kassam, M.D.,
 M.H.P.E.
 Dawn Kleindorfer, M.D.
 Sangeeta Lamba, M.D., M.S.,
 H.P.Ed.
 Nita Limdi, Pharm.D, Ph.D.
 Lia Logio, M.D.
 Yvonne Lui, M.D.
 Annette Medina-Walpole,
 M.D.
 Mary Maral Mouradian, M.D.
 Myra Muramoto, M.D., M.P.H.
 Kathryn Myers, M.D., Ed.M.
 Dianne Neumark-Sztainer, Ph.D.,
 M.P.H., R.D.
 Vivian Obeso, M.D.
 Suzette Oyeku, M.D., M.P.H.
 Leslie Parent, M.D.
 Roberta Pileggi, D.D.S., M.S.
 Margareta Pisarska, M.D.
 Arnyce Pock, M.D.
 Susan Pollart, M.D., M.S.
 Heather Prendergast, M.D., M.S.,
 M.P.H.
 Angeles Ribera, Ph.D.
 Daisy Sahoo, Ph.D., FAHA
 Nancy Schoenberg, Ph.D.
 Pam Shaw, M.D.
 Pamela Sklar, M.D., Ph.D.
 Elizabeth Trowbridge, M.D.
 Jayne Weiss, M.D.
 Joanne Wolfe, M.D., M.P.H.
 Wei Yang, M.D.
 Kimberly Yonkers, M.D.
 Laine Young-Walker, M.D.

2017 – 2018

Elizabeth Alpern, M.D., M.S.C.E.
 Lisa Barnes, Ph.D.
 A.M. Barrett, M.D.

Ana Karina Bedran-Russo,
 Ph.D., D.D.S.
 Kimberly Boland, M.D.
 Daniela Bota, M.D., Ph.D.
 Suzanne Brandenburg, M.D.
 Laura Cassidy, M.S., Ph.D.
 Judy Chang, M.D., M.P.H.
 Rita Charon, M.D., Ph.D.
 Amy Chen, M.D., M.P.H.
 Mary-Margaret Chren, M.D.
 Linda Cripe, M.D.
 Coleen Cunningham, M.D.
 Isabelle Deschenes, Ph.D.
 Maryam Fouladi, M.D.
 Nancy Freitag, Ph.D.
 Caroline Genco, Ph.D.
 Michelle Gong, M.D., M.S.
 Sara Gordon, D.D.S., M.Sc.
 Sharon Griswold, M.D.,
 M.P.H.
 Flora Hammond, M.D.
 Carrie Haskell-Luevano, Ph.D.
 Michele Heisler, M.D., M.P.A.
 Karen Horton, M.D.
 Pamela Hughes, D.D.S.
 Melinda Irwin, Ph.D.
 Yvonne Kapila, D.D.S., Ph.D.
 Mary Killackey, M.D.
 Richelle Koopman, M.D., M.S.
 Monica Kraft, M.D.
 Michele Kutzler, Ph.D.
 Stacie Levine, M.D.
 Leslie McClure, Ph.D.
 Karen Mustian, Ph.D., M.P.H.
 Genevieve Neal-Perry, M.D.,
 Ph.D.
 Adesuwa Olomu, M.D.
 Karlett Parra, Ph.D.
 Anne Pereira, M.D., M.P.H.
 Lori Post, Ph.D.
 Susan Promes, M.D., M.B.A.
 Elizabeth Ripley, M.D., M.S,
 R.A.C.
 Tara Sabo-Attwood, Ph.D.
 Shlomit Schaal, M.D., Ph.D.
 Kari Simonsen, M.D.
 Helen Simpson, M.D., Ph.D.
 Sarah Tishkoff, Ph.D.
 Ann Van Heest, M.D.
 Sandhya Venugopal, M.D.,
 MHPE
 Kristin Victoroff, D.D.S., Ph.D.
 Margaret Wierman, M.D.
 Karen Wilson, M.D., M.P.H.
 Ellen Zimmermann, M.D.

2018 – 2019

Cheryl Al-Mateen, M.D.
Thurayya Arayssi, M.D.
Carol Bennett, M.D.
Zea Borok, M.D.
Sheana Bull, Ph.D.
Sharon Calaman, M.D.
Sonia Chimienti, M.D.
Renee Edwards, M.D., M.B.A.
Celeste Finnerty, Ph.D.
Karen Frank, M.D., Ph.D.
Debra Furr-Holden, Ph.D.
Maureen Gannon, Ph.D.
Nina Gentile, M.D.
Laura Gibson, Ph.D.
Carmen Guerra, M.D., M.S.C.E.
Martha Gulati, M.D., M.S.
Maya Hammoud, M.D., M.B.A.
Donna Hansel, M.D., Ph.D.
Toi Harris, M.D.
Rachel Hess, M.D., M.S.
Susan Hingle, M.D.
Charlotte Hobbs, M.D., Ph.D.
E. Hwang, M.D., M.P.H.
Elizabeth Jacobs, M.D.
Annette Johnson, M.D., M.S.
Stephanie Jones, M.D.
Madhavi Kadakia, Ph.D.
Barbara Kazmierczak, M.D.,
Ph.D.
Donna Kern, M.D.
Annette Khaled, Ph.D.
Mary Klingensmith, M.D.
Antonia Kolokythas, D.D.S.,
M.Sc.
Anne Libby, Ph.D.
Jane Liebschutz, M.D., M.P.H.
Joyce Lloyd, Ph.D.
Julie Lumeng, M.D.
Ayesha Mian, M.D.
Lavinia Middleton, M.D.
Angela Mills, M.D.
Bhramar Mukherjee, Ph.D.
Wendy Nembhard, Ph.D.,
M.P.H.
Cheryl O'Malley, M.D.
Sang Park, D.D.S., M.MSc.
Leigh Patterson, M.D., M.A.Ed.
Sallie Permar, M.D., Ph.D.
Jennifer Potter, Ph.D., M.P.H.
Aruna Ramesh, D.M.D., M.S.
Tiina Reponen, Ph.D.
Monika Safford, M.D.
Erika Saunders, M.D.
Leslie Shen, Ph.D.

Ruth Shim, M.D., M.P.H.
Michelle Stevenson, M.D.,
M.S.
Kyla Terhune, M.D., M.B.A.
Susan Thibeault, Ph.D.
Alexia Torke, M.D., M.S.
Alison Walker, M.D., M.P.H.
Judy Yee, M.D.

2019 – 2020

Cory Abate-Shen, Ph.D.
Lilian Abbo, M.D.
Ngozi Anachebe, Pharm.D., M.D.
Ann Anderson Berry, M.D., Ph.D.
Evelyn Anthony, M.D.
Anuja Antony, M.D., M.P.H.,
M.B.A., F.A.C.S.
April Armstrong, M.D.
Maryam Asgari, M.D., M.P.H.
Karen Ballen, M.D.
Kathleen Barnes, Ph.D.
Julie Bauman, M.D., M.P.H.
Jerica Berge, Ph.D., M.P.H.
Stephanie Blank, M.D.
Jennifer Boardman, Ph.D.
Rachel Buchsbaum, M.D.
Nichole Carlson, Ph.D.
Chiquita Collins, Ph.D.
Deborah Conway, M.D.
Deborah DeWaay, M.D.
Penelope Duerksen-Hughes,
Ph.D.
Angela Ellison, M.D., M.Sc.
Paula Ferrada, M.D.
Lisa Halvorson, M.D.
Andrea Hayes-Jordan, M.D.
Reshma Jaggi, M.D., D.Phil.
Yoon Kang, M.D.
Amy Kind, M.D., Ph.D.
Robyn Klein, M.D., Ph.D.
Purnima Kumar, D.D.S., Ph.D.
Evanthia Lalla, D.D.S., M.S.
B Paige Lawrence, Ph.D.
Men-Jean Lee, M.D.
Elizabeth Leenelle, M.D.
Amber Luong, M.D., Ph.D.
Megan Mahoney, M.D.
Donna Martin, M.D., Ph.D.
Nicole McCoin, M.D.
Peggy McNaull, M.D.
Kathy Miller, M.D.
Jocelyn Mitchell-Williams, M.D.,
Ph.D.
Tiffany Moore Simas, M.D., M.P.H.,
M.Ed.
Nancy Murphy, M.D.

Kristen Nadeau, M.D., M.S.
Mooyeon Oh-Park, M.D. M.S.
Elizabeth Parks, Ph.D.
Melissa Perry, Sc.D., M.H.S.
Laura Phieffer, M.D.
Kristina Reber, M.D.
Michelle Robinson, D.M.D., M.A.
Mithu Sen, M.D.
Judith Simms-Cendan, M.D.
Geeta Swamy, M.D.
Renee Turchi, M.D., M.P.H.
Cornelia Ulrich, M.S., Ph.D.
Louise Walter, M.D.
Marjorie Wang, M.D. M.P.H.
Rachel Whitmer, Ph.D.
Pamela Williams, M.D.
Wendi Wills El-Amin, M.D.

2020 – 2021

Hoda Badr, Ph.D.
Allison Ballantine, M.D.
Patricia Birk, M.D.
Jennifer Bizon, Ph.D.
Elizabeth Bonney, M.D., M.P.H.
Jada Bussey-Jones, M.D.
Michelle Caird, Ph.D.
Alice Chuang, M.D., M.Ed.
Gretchen Diemer, M.D.
Cynthia Downard, M.D., M.M.Sc.
Rebecca Dutch, Ph.D.
Lotte Dyrbye, M.D., M.H.P.E.
Susanna Evans, M.D., F.A.A.F.P.
Angela Fagerlin, Ph.D.
Colleen Fogarty, M.D., M.Sc.
Kristie Foley, Ph.D., M.S.
Beth Fox, M.D., M.P.H.
Samara Ginzburg, M.D.
Sharon Giordano, M.D., M.P.H.
Riki Gottlieb, D.M.D., M.S.
Melissa Haendel, Ph.D.
Irene Hamrick, M.D.
Florette Hazard, M.D.
Caridad Hernandez, M.D.
Janine Higgins, Ph.D.
Sarah Iriana, M.D.
Denise Jamieson, M.D., M.P.H.
Arundhati Jeyabalan, M.D.
Rima Jubran, M.D., M.P.H.,
M.A.C.M.
Helen Kales, M.D.
Amy Kelley, M.D., M.S.H.S.
Catherine Krawczeski, M.D.
Sara Lamb, M.D.
Judith Lichtman, Ph.D., M.P.H.
Alyson McGregor, M.D., M.A.
Kenya McNeal-Trice, M.D.

Raina Merchant, M.D.
Jill Mhyre, M.D.
Elaine Morrato, Dr.PH., M.P.H.
Steffi Oesterreich, Ph.D.
Emily Oken, M.D., M.P.H.
Jacqueline Nwando Olayiwola,
M.D., M.P.H., F.A.A.F.P.
Donna Parker, M.D.
Page Pennell, M.D.
Julie Pilitsis, M.D., Ph.D.
Uma Reddy, M.D., M.P.H.
Nasia Safdar, M.D., Ph.D.
Sinem Sahingur, D.D.S., M.S., Ph.D.
Celia Schiffer, Ph.D.
Julia Segre, Ph.D.
Nancy Sicotte, M.D.
Aimee Smidt, M.D.
Randi Streisand, Ph.D.
Kimberly Templeton, M.D.
Stephanie Terezakis, M.D.
Julie Thacker, M.D.
Britta Thompson, Ph.D., M.S.
Brownsyne Tucker Edmonds, M.D.,
M.P.H., M.S.
Barbara Van de Wiele, M.D.
Amy Waer, M.D.
Teresa Waters, Ph.D.
Bessie Young, M.D., M.P.H.
Wei Zhou, M.D.

2021 – 2022

Leslie Appiah, M.D.
Kristen Atkins, M.D.
Erika Banks, M.D.
Scarlett Bellamy, Sc.D.
Cathy Bradley, Ph.D.
Amy Brooks-Kayal, M.D., F.A.A.N.,
F.A.N.A., F.A.E.S.
Shobhina Chheda, M.D., M.P.H.
Carlee Clark, M.D.
Cristin Colford, M.D.
Takesha Cooper, M.D., M.S.
Cindy Crusto, Ph.D.
Katherine Deans, M.D., M.H.Sc.
Shirley Delair, M.D., M.P.H.
Kristina Duffin, M.D., M.S.
Cynthia Emory, M.D.
Ihuoma Eneli, M.D., M.S.
Cathy Eng, M.D.
Heide Ford, Ph.D.
Maria Therese Galang-Boquiren,
D.M.D., M.S.
Rahel Ghebre, M.D., M.P.H.
Nora Gimpel, M.D.
Kristin Hahn-Cover, M.D.
Melinda Hamilton, M.D., M.S.

Jennifer Harvey, M.D.
Memoona Hasnain, M.D.,
M.H.P.E., Ph.D.
Erin Haynes, Dr.PH, M.S.
Holly Hedrick, M.D.
Xuemei Huang, M.D., Ph.D.
Sara Jones, Ph.D.
Maria Kelly, M.D.
Shabaana Khader, Ph.D.
Tara Lagu, M.D., M.P.H.
Clara Lee, M.D., M.P.P.
Jo Anna Leuck, M.D.
Merry Lindsey, Ph.D.
Margaret Maimone, Ph.D.
Judith McKenzie, MD, MPH
Anne McKenzie-Brown, M.D.
Deena McCrae, M.D.
Dana McTigue, Ph.D.
Madhusmita Misra, M.D., M.P.H.
Leslie Morse, D.O.
Susanna Naggie, M.D., M.H.S.
Mangala Narasimhan, D.O.
Alison Netski, M.D.
Erika Newman, M.D.
Teryl Nuckols, M.D., M.S.H.S.
Marcella Nunez-Smith, M.D., M.H.S.
Mildred Olivier, M.D., B.S.
Lisa Prosser, Ph.D., M.S.
Karen Restifo, MD, JD
Marylyn Ritchie, Ph.D.
Jehni Robinson, M.D., F.A.A.F.P.
Michelle Roett, M.D., M.P.H., FAAFP
Rebecca Rogers, M.D.
Sally Santen, M.D., Ph.D.
Julie Silver, M.D.
Carolyn Smith, Ph.D.
Jessica Snowden, M.D., M.S.
Abby Spencer, M.D., M.S.
Joan St. Onge, M.D., M.P.H.
Erica Sutton, M.D.
Erica Teixeira, D.D.S., M.S., Ph.D.
Lindsay Thompson, M.D., M.S.
Veronica Tom, Ph.D.
Judy Tung, M.D.
Audrey Tyrka, M.D., Ph.D.
Achala Vagal, M.D., M.S.
Renuga Vivekanandan, M.D.
Donna Washington, M.D., M.P.H.
Carrie Wieneke, M.D.

2022 – 2023

Debbie Aizenberg, M.D. *
Tomi Akinyemiju, Ph.D., M.S.
Laura Alonso, M.D.
Lisa Auerbach, M.D., M.S., H.P.Ed.
Leah Backhus, M.D., M.P.H.

Amber Barnato, M.D., M.P.H., M.S.
Melissa Bauman, Ph.D.
Mara Becker, M.D., M.S.C.E.
Rinad Beidas, Ph.D.
Erica Bisson, M.D. *
Ghada Bourjeily, M.D., M.A.
Holly Boyer, M.D. *
Biykem Bozkurt, M.D., Ph.D.
Carol Cabral, M.D. *
Diane Chico, Ph.D.
Teena Chopra, M.D., M.P.H. *
Heather Clauss, M.D.
Margaret Conroy, M.D., M.P.H.
Zara Cooper, M.D., M.Sc. *
Katherine Coyner, M.D.
Clara Curiel, M.D.
Suzanne Danhauer, Ph.D.
Tracy de Peralta, D.M.D., Ph.D.,
M.ClinEd.
Louito Edje, M.D., M.H.P.E.
Felicity Enders, Ph.D., M.P.H.
Guang Fan, M.D., Ph.D. *
Dana Farabaugh, M.D.
Ruth Farrell, M.D., M.A.
Andrea Fernandez, MD, MA *
Rosemarie Fernandez, M.D.
Dee Ford, M.D.
Janna Friedly, M.D., M.P.H.
Karen Friedman, M.D., M.S.
Meg Frizzola, D.O.
Marissa Galicia-Castillo, M.D. *
Monika Goyal, M.D., M.S.C.E.
Harminder Grewal, M.D., M.B.B.S.,
D.G.O. *
Elizabeth Grubbs, M.D.
Chanita Halbert, Ph.D.
Patricia Hametz, M.D., M.P.H. *
April Hartman, M.D.
Miriam Hoffman, MD *
Elizabeth Jackson, M.D., M.P.H. *
Vicki Jackson, M.D., M.P.H.
Angela Jefferson, Ph.D.
Ruth Keri, Ph.D.
Srividya Kidambi, M.D., M.S.
KMarie King, M.D., M.S., M.B.A.
Colleen Kraft, M.D.
Jennifer Kraschewski, M.D., M.P.H.
Daniela Ladner, M.D., M.P.H.
Kara Laing, M.D.
Anne Larkin, MD, FACS
Meredith Lind, M.D. *
Kelsey Logan, M.D., M.P.H.
Nathalie May, M.D.
Kathryn McQueen, M.D., M.P.H.
Laxmi Mehta, M.D.
Tracey Milligan, M.D.

Nikita Mirajkar, Ph.D.
 Anna Moore, Ph.D.
 Jeanette Morrison, M.D.
 Radha Nandagopal, M.D.
 Elizabeth Nichols, M.D. *
 Flavia Nobay, M.D.
 Sung-Yun Pai, M.D.
 Pari Pandharipande, M.D., M.P.H.
 Nancy Pandhi, M.D., M.P.H., Ph.D.
 Sara Pasquali, M.D., M.H.S.
 Priscilla Pemu, M.D.
 Flavia Pirihi, D.D.S., Ph.D.
 Kristen Plastino, Pharm.D., M.D.
 Alina Popa, M.D. *
 Erin Pukenas, M.D.
 Carmen Quatman, M.D., Ph.D. *
 Vidya Raman, M.D., M.B.A. *
 Elizabeth Rebello, M.D.
 Heather Reisinger, Ph.D.
 Christine Riedy Murphy, Ph.D.,
 M.P.H.
 Cynthia Rogers, M.D.
 Tamara Rozental, M.D.
 Lauren Sansing, M.D., M.S.
 Deanna Sasaki-Adams, M.D. *
 Yael Schenker, M.D., M.A.S.
 Irini Sereti, M.D., M.H.S.
 Maria Sheakley, Ph.D.
 Cardinale Smith, M.D., Ph.D. *
 Becky Smith, M.D. *
 Shubhika Srivastava, M.D. *
 Jennifer Takagishi, M.D. *
 Vassiliki Tsikitis, MD, MCR, MBA
 Haimanot Wasse, M.D., M.P.H.
 Stacey Watt, M.D., MBA, MHPE *
 Stephanie White, M.D.
 Rebecca Wilcox, M.D.
 Ashley Wysong, M.D., M.S.

2023 – 2024

Jennifer Adams, MD
 Mary Ahn, MD
 Maria Alcaide, MD
 Irene Alexandraki, MD, PhD, MPH
 Lee-Ann Allen, PhD
 Kavita Babu, MD *
 Arna Banerjee, MD, MMHC *
 Sarah Barnhard, MD *
 Elizabeth Barr, PhD *
 Lisa Barroilhet, MD, MS
 Catherine Bradley, MD, MSCE
 April Buchanan, MD
 Irina Burd, MD, PhD
 Cheryl Bushnell, MD, MHS
 Andrea Cedfeldt, MD
 Lina Chalack, MD, MSCS

Lisa Chamberlain, MD, MPH
 Lanla Conteh, MD, MPH, MBA *
 Marie Crandall, MD, MPH
 Carrie Cwiak, MD *
 Julia Dahl, MD *
 Sheetal Desai, MD, MEd *
 Lindsey Douglas, MD, MS *
 Roxana Dronca, MD
 Jan Eberth, PhD
 Susan Evans, MD, MBA *
 Nada Fadul, MD
 Sara Fazio, MD
 Vera Feuer, MD *
 Carrie Francis, MD
 Annette Gadegbeku, MD
 Tiffany Gary-Webb, PhD, MHS
 Elizabeth Gaughan, MD *
 Ingina Genao, MD
 Cynthia Gerhardt, PhD
 Marilyn Glassberg Csete, MD
 Melody Goodman, PhD
 Felicia Goodrum, PhD
 Nicole Guinn, MD, MBA*
 Edith Gurewitsch Allen, MD, MBA,
 M.Ed.
 Suzanne Haney, MD, MS
 Laura Hansen, PhD *
 Nan Hatch, DMD, PhD
 Sarah Hawley, PhD, MPH
 Leslie Heinberg, PhD
 Anna Hemnes, MD
 Heather Herrington, MD *
 Mary Hoffman, MD, MSPH
 Jennifer Hsu, MD
 Eunice Huang, MD, MS *
 Nadia Ismail, MD
 Michaela Jansen, PharmD, PhD
 Natalie Jeong, DMD, MA
 Hadine Joffe, MD, MSc
 Tarina Kang, MD, MHA *
 Fasiha Kanwal, MD, MSHS
 Nicole Karjane, MD
 Meg Keeley, MD
 Ann Kellams, MD
 Kristen Kelly, MD
 Candice Klug, PhD
 Lyuba Konopasek, MD
 Sandhya Kortagere, PhD
 Diann Krywko, MD
 Monisha Kumar, MD
 Michelle Lall, MD, MHS
 Margaret Larkins-Pettigrew, MD, MEd
 Joyce Lee, MD, MPH *
 Eleni Linos, MD, DrPH
 Amy Locke, MD
 Claudia Lora, MD

Michele Lossius, MD *
 Judette Louis, MD, MPH *
 Jennifer Lucero, MD, MA
 Fauzia Mahr, MD, MBA, MBBS *
 Christina Mangurian, MD, MAS
 Lindsay Mazotti, MD
 Geraldine McGinty, MD, MBA
 Jessica Merlin, MD, PhD, MBA
 Ilhem Messaoudi, PhD
 Caroline Milne, MD, MBA *
 Vineeta Mittal, MD, MBA *
 Emma Morton-Eggleston, MD, MPH
 Aditee Narayan, MD, MPH
 Quyen Ngo-Metzger, MD, MPH
 Linda Niccolai, PhD, ScM
 Tatiana Oberyshyn, PhD
 Princess Ogbogu, MD
 Julie Oyler, MD *
 Natalie Pageler, MD *
 Neesh Pannu, MD, SM
 Sareh Parangi, MD *
 Nuria Pastor-Soler, MD, PhD
 Erika Petersen, MD
 Karin Peterson, PhD
 Camiron Pfennig, MD, MHPE *
 Jennifer Philips, MD, PhD
 Julie Phillips, MD, MPH
 Yanina Purim-Shem-Tov, MD, MS
 Jill RachBeisel, MD *
 Marizen Ramirez, PhD, MPH
 Kristin Ray, MD, MS *
 Barbara Rehmann, MD
 Raquel Reinbolt, MD *
 Milagros Rosal, PhD, MS
 Hilary Ryder, MD, MS
 Basmah Safdar, MD, MSc
 Julie Samora, MD, PhD, MPH, MPA *
 Soma Sengupta, MD, PhD, MBA *
 Neomi Shah, MD, MPH, MSc
 Shalini Shah, MD MBA *
 Zarine Shah, MD *
 Erin Shaughnessy, MD MSHCM *
 Beth Shaz, MD, MBA *
 Tina Simpson, MD, MPH
 Diane Sliwka, MD *
 Lucy Spalluto, MD, MPH *
 Rachel Stanley, MD, MHSA
 Stephanie Staras, PhD, MSPH
 Kristan Staudenmayer, MD, MS *
 Laura Stroud, PhD
 Annemarie Stroustrup, MD, MPH
 Rulla Tamimi, ScD
 Lisa Tannock, MD
 Barbara Taylor, MD, MS
 Rebecca Toonkel, MD
 Shelley Tworoger, PhD

Ndidi Unaka, MD, Med *
 Corey Ventetuolo, MD, MS
 Jamie Wagner, DO, MBA *
 Tisha Wang, MD
 Alana Welm, PhD
 Andrea Wendling, MD
 Sarah Wiehe, MD, MPH
 Sandra Wong, MD MS
 Sarah Wood, MD
 Maame Yaa Yiadom, MD, MPH,
 MSCI *
 Jameela Yusuff, MD, MPH *
 Karen Zur, MD

2024 - 2025

Anita Afzali, MD, MPH, MHCM *
 Neera Ahuja, MD *
 Elena Aikawa, MD, PhD
 Andrea Anderson, MD, MEd
 Rebecca Aslakson, MD, PhD
 Lee Atkinson-McEvoy, MD *
 Abeer Azzuqa, MD *
 Megan Bair-Merritt, MD, MSCE *
 Seema Baranwal, MD
 Sarah Benish, MD *
 Marian Betz, MD, MPH
 Sylvia Botros-Brey, MD, MSCI
 Irena Boyce, PhD *
 Jenny Boyd, MD
 Debra Boyer, MD, MHPE
 Katharina Busl, MD, MS
 Leigh Cantrell, MD, MSPH *
 Kathryn Carlson, MD, MMHC *
 Amy Caruso Brown, MD, MSCS,
 MSCS
 Tara Catanzano, MD
 Michelle Cespedes, MD, MS
 Debbie Cheng, ScD
 Lisa Chow, MD, MS
 Elizabeth Chuang, MD, MPH
 Cathleen Colon-Emeric, MD, MHS
 Julia Cooper, PhD
 Adrienne Dade, MD
 Hongying Dai, PhD
 Cori Daines, MD
 Hollis Day, MD, MS, MHPE
 Caroline Dealy, PhD
 Sarah Diamond, MD *
 Danita Eatman-Daniels, PhD
 Danielle Ehret, MD, MPH *
 Heather Fagan, MD *
 Joanna Fair, MD, PhD
 Laura Fanucchi, MD, MPH
 Brenna Farmer, MD, MBA, M.S. *
 Cristina Ferrone, MD
 Christine Finn, MD *

Gloria Fleming, MD
 JoAnne Flynn, PhD
 Emily Fondahn, MD *
 Laura Gelfman, MD, MPH *
 Sabina Gesell, PhD
 Lisa Gilmer, MD
 Jean Goodman, MD, MBA
 Amelia Grover, MD
 Ruchi Gupta, MD, MPH
 Divya Gupta, MD *
 Meilan Han, MD
 Karen Hauer, MD, PhD
 Carrie Heike, MD, MS
 Jennifer Helderman, MD, MS *
 Gina Hendren, MD
 Tabia Henry Akintobi, PhD, MPH
 Amy Hermes, MD, PhD *
 Carrie Herzke, MD, MBA *
 Karen Horneffer-Ginter, PhD
 Leslie Hulvershorn, MD, MSc
 Tara Huston, MD
 Juana Hutchinson-Colas, MD, MBA
 Suzanne Jan de Beur, MD
 Naudia Jonassaint, MD, MHS, MBA
 *

Monika Joshi, MD
 Anita Joy-Thomas, BDS, PhD
 Jessica Kalender-Rich, MD, MHA *
 Michelle Kim, MD *
 Melissa Kirkwood, MD *
 Meghan Lane-Fall, MD, MSHP
 Lisa Lang, DDS, MS, MBA
 Binnaz Leblebicioglu, DDS, MS, PhD
 Grace Lee, MD, MPH *
 Madelene Lewis, MD
 Judith Lin, MD, MBA
 Machelie Linsmeyer, Ed.D.
 Amy Lu, MD, MPH *
 Quan Ly, MD *
 Teresa Malcolm, MD, MBA *
 Erica Marsh, MD, MSCI
 Katherine Mason, MD
 Susan Matulevicius, MD, MSCS
 Hilitt Mechaber, MD
 Mary Melo, DDS, PhD
 Anna Miller, MD
 Amy Miller, MD *
 Eydie Miller-Ellis, MD
 Julie Moldenhauer, MD *
 Jessica Mong, PhD
 Viviane Nasr, MD, MPH *
 Susanne Nicholas, MD, PhD, MPH
 Bethany Niell, MD, PhD
 Sabrena Noria, MD, PhD *
 Danielle Ompad, PhD
 Jennifer O'Toole, MD, MEd

Nimisha Parekh, MD, MPH
 Kavita Parikh, MD
 Omrana Pasha-Razzak, MD, MSPH
 Catherine Passaretti, MD *
 Anisha Patel, MD, MSPH, MSHS
 Toral Patel, MD *
 Gopi Patel, MD, MS *
 Carmem Pfeifer, DDS, PhD
 Kristen Pierce, MD
 Vanessa Poliquin, MD
 Christy Porucznik, PhD
 Stacy Potts, MD, MEd *
 Archana Pradhan, MD, MPH
 Aurora Pryor, MD, MBA
 Loretta Que, MD
 Kelly Quesnelle, PhD
 Caroline Reinke, MD, MSHP *
 Valerie Reinke, PhD
 Maria Rodriguez, MD, MPH
 Larissa Rodriguez, MD
 Faye Rogers, PhD
 Ulka Sachdev, MD
 Ruxana Sadikot, MD
 Ankita Sagar, MD, MPH, FACP *
 Bodour Salhia, PhD
 Rinarani Sanghavi, MD, MBA *
 Erica Saphire, PhD, MBA
 Courtney Scaife, MD *
 Nirali Shah, MD
 Noa'a Shimon, MD, MPH *
 Durga Singer, MD, MA
 Sonali Smith, MD
 Angela Smith, MD, MS, FACS
 Carla Spagnoletti, MD, MS
 Lindsay Strowd, MD
 Misha Syed, MD, MEd
 Anna Taranova, MD, MS *
 Mylin Torres, MD
 Christin Traba, MD, MPH
 Constance Tucker, MA, PhD
 Heidi Twedt, MD *
 Jamie Ullman, MD *
 Camille Vaughan, MD, MS
 Brandee Waite, MD
 Valencia Walker, MD, MPH
 Deneen Wellik, PhD
 Suzanne Wenderoth, MD *
 Theresa Werner, MD *
 Heather Whitson, MD
 Crystal Wright, MD *
 Joy Wu, MD, PhD
 Jin Xiao, DDS, PhD

* Denotes Executive Leadership in
 Health Care (ELH) program



honoring

D. WALTER COHEN, DDS, AND HIS VISIONARY SPONSORSHIP OF WOMEN



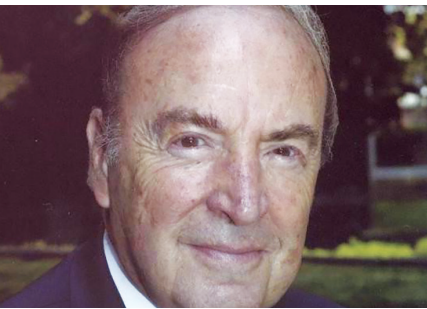
Nancy D. Spector, MD
Executive Director, Executive Leadership in Academic Medicine

D. Walter Cohen, DDS, the founder of Drexel University College of Medicine's *Hedwig van Ameringen* Executive Leadership in Academic Medicine® (ELAM®) program for women in academic medicine, dentistry, public health and pharmacy, epitomized what it means to be a sponsor. He sponsored the development of ELAM and continued to support it right up until his passing. Sponsorship is a key path to reaching gender equity and is recognized as a critical piece in the puzzle of how to help advance women's career. Dr. Cohen saw the importance of this this early on, and the more than 1,600 graduates of the ELAM program, their institutions and their communities are the beneficiaries of his remarkable vision.

When Dr. Cohen founded ELAM in 1995, he recognized that transforming the face of academic medicine would require significant culture change and persistent efforts to sustain the success of women leaders. The ELAM program that he created preserves Drexel University College of Medicine's strong heritage of advancing women in medicine. Drexel's College of Medicine is the successor to the Woman's Medical College of Pennsylvania, the first medical school in the world for women,

which was founded as the Female Medical College of Pennsylvania in 1850. Hannah Longshore received her medical degree from the Female Medical College in 1851 and became Philadelphia's first woman physician in 1853. A member of the first graduating class, Ann Preston, later became dean of Woman's Medical College of Pennsylvania, the first woman dean of a medical school anywhere. Anandibai Joshi graduated in 1886 from Woman's Medical College of Pennsylvania at the age of 19, becoming the first Indian female physician. Eliza Grier graduated from Woman's Medical College of Pennsylvania in 1897, and in 1898 she became the first African American woman admitted to practice medicine in Georgia.

Building on this legacy, in 1995, Dr. Cohen and ELAM's co-founders Page Morahan,



Dr. D.
Walter
Cohen





PhD, and Patricia Cormier, EdD, conducted a needs assessment of medical school deans, and out of that assessment ELAM was established with its first class of 25 fellows from schools of medicine. In 1996, the first two ELAM fellows from dental schools were accepted and the American Association of Dental Schools endorsed ELAM. It was due to Dr. Cohen's advocacy of ELAM that Patricia Kind and her mother, Hedwig van Ameringen, provided a partial endowment for ELAM in its third year. His early leadership and strong continued support made the program the success that ELAM is today.

Dr. Cohen was a leader who made a concrete, measurable impact on the number of women in academic leadership positions. ELAM alumnae, or "ELUMs" as Dr. Cohen coined them, are now in high-level leadership positions at 300 institutions around the country and the world. 94 fellows from dental schools have graduated from ELAM. Five of these women are now deans of U.S. dental schools, and ELUM Karen P. West, DMD, MPH, is the president and CEO of the American Dental Education Association. In addition, 28 ELUMs are deans at medical schools and 13 ELUMs are deans at public health/population health schools. At our 2018 graduation, Dr. Cohen said that ELAM was his proudest achievement.

Dr. Cohen was also one of the founders of the Lynn Yeakel Institute for Women's Health and Leadership at Drexel University College of Medicine. In his wife's memory, he helped to endow the Betty Cohen Chair in Women's Health at the medical college. This was the first endowed chair in women's health in the world.

Throughout his years as president of the Medical College of Pennsylvania, then chancellor of Allegheny University of the Health Sciences, Dr. Cohen was an advisor, a faculty member, a fundraiser, and a champion. He shared the depth and range of his leadership experiences with our ELAM fellows as a panelist on our school of medicine case study as well as by teaching sessions on fund raising, development and institutional advancement.

Dr. Cohen's office was right down the hall from mine and he was there just two days before he passed away. I will miss his remarkable memory, the elegant afternoon teas we shared at the Rittenhouse Hotel as we talked about advancing women's leadership, and his generosity. His loss is large, but his legacy is larger. We're grateful for his stalwart commitment to women's leadership which helped to change the landscape of institutions around the world.

Adapted from tribute originally published in *Compendium*. Copyright © 2019 to AEGIS Publications, LLC.



in memory of

ELAM Graduates:

Susan Anderson, M.D.
ELAM 2014-2015

Deborah Bowen, Ph.D.
ELAM 2009-2010

Judith Buchanan, Ph.D., D.M.D.
ELAM 2001-2002

Linda Crnic, Ph.D.
ELAM 2003-2004

Theola Douglas, D.D.S., MBA
ELAM 1999-2000

Connie Drisko, D.D.S.
ELAM 2001-2002

Kimberly Ephgrave, M.D.
ELAM 2002-2003

Karen Gale, Ph.D.
ELAM 2003-2004

Tana Grady-Weliky, M.D.
ELAM 2001-2002

Karen Marcdante, M.D.
ELAM 1997-1998

Meridith Marks, M.D., M.Ed.
ELAM 2003-2004

Janet McElhaney, M.D.
ELAM 2001-2002

Edith Mitchell, M.D.
ELAM 2008-2009

Martha Morris, Sc.D.
ELAM 2008-2009

Ana Murphy, M.D.
ELAM 2001-2002

Carolyn Reed, M.D.
ELAM 1999-2000

Pamela Sklar, M.D., Ph.D.
ELAM 2016-2017
Alice Speer, M.D.
ELAM 1997-1998

Patricia Thomas, M.D.
ELAM 2000-2001

Rebecca Twersky, M.D.
ELAM 1998-1999

Pamela Williams, M.D.
ELAM 2000-2001

Sandra Willsie, D.O., M.A.
ELAM 1999-2000

Nancy Zahniser, Ph.D.
ELAM 2005-2006

Zofia Zukowska, M.D., Ph.D.
ELAM 2006-2007

Other ELAM Community Members

Elias Abrutyn, M.D.

Doris Bartuska, M.D.

Steven Berk, M.D.

Carole Bland, Ph.D.

Stuart Bondurant, M.D.

Gilbert Bradham, M.D.

John Chapman, M.D., J.D.

Neil Cherniack, M.D.

D. Walter Cohen, D.D.S.

John Daly, M.D.

Dominick DePaola, D.D.S., Ph.D.

Carolyn Desjardins, Ph.D.

Linda DeVore, R.D.H., M.A.

Anna Epps, Ph.D.

Gary Gabriele, Ph.D.

Elizabeth Garrett, Ph.D.

Nancy Gary, M.D., M.A.C.P.

Thomas Gilmore, A.B., M.Arch.

Mary Howett, Ph.D.

John Hutton, M.D.

Judith Katz, Ph.D.

Patricia Kind

June Klinghoffer, M.D.

Oksana Korzeniowski, M.A.

Thomas Langfitt, M.D.

Laura Lynch

William Maxted, M.D.

Robert McCollum, M.D., D.P.H.

John McDonald, M.D.

Eugene Orringer, M.D.

Evelyn Pintz, M.D.

Robert Raszkowski, M.D., Ph.D.

Allan Rosenfield, M.D.

James Schroeder, M.D.

Estherina Shems, M.D.

Janice Smith, M.B.A, Ph.D.

Susan Smyth, MD PhD

Bonita Stanton, M.D.

Edward Stemmler, M.D.

Patreece Thompson, M.D.

Lynn Yeakel, M.S.M.

elam faculty (1995-2025)

Stephanie Abbuhl, M.D.
Linda Abriola, Ph.D.
Jean-Marie Alves-Bradford, M.D.
Susan Ambrose, D.A.
Christina Amon, Sc.D., P.E.
Sharon Anderson, M.D.
Valerie Arkoosh, M.D., M.P.H.
Donna Arnett, Ph.D., M.S.P.H.
Nancy Aronson, Ph.D.
Carol Aschenbrenner, M.D.
Kathryn Atchison, D.D.S., M.P.H.
Barbara Atkinson, M.D.
Victoria Austin
David Bachrach, M.B.A.
Linda Bachrach
Bart Bailey, M.B.A.
L'Tanya Bailey, D.D.S., M.S.
Margaret Bailey, Ph.D., P.E.
John Baker, II, Ph.D.
Margaret Banks, Ph.D.
Suzanne Barbour, Ph.D.
Jill Baren, M.D., M.S., M.B.A.,
F.A.C.E.P., F.A.A.P.
Paul Batalden, M.D.
Douglas Bauer
Diana Beattie, Ph.D.
Koren Bedeau, Ph.D.
Bettina Beech, Dr.P.H., M.P.H.
Phyllis Beemsterboer, M.S., Ed.D.
B. Behrens, M.B.B.S.
John Benson, Jr., M.D.
Nathan Berger, M.D.
Francine Berman, Ph.D.
Janet Bickel, M.A.
Theresa Bischoff
Ann Bonham, Ph.D.
Joseph Bordogna, Ph.D.
Jo Boufford, M.D.
Gaylen Bradley, Ph.D.
Barbara Bregman, Ph.D.
Delores Brisbon
Ken Broadhurst, MHSA, PCC
Ann Brown, MD, MHS
Erika Brown, Ph.D.
Roger Bulger, M.D.

Joanna Cain, M.D.
Sally Camper, Ph.D.
Elizabeth Cannon, Ph.D.
Elinor Cantor, Ph.D., M.B.A.
Gayle Capozzalo
Inga Carboni, Ph.D.
Adela Casas-Melley, M.D.
Joan Cattie, C.P.A.
Latha Chandran, M.D., M.P.H.
Archana Chatterjee, MD, PhD
Ann Chinnis, M.D., M.S.H.A.
Jan Clement, Ph.D.
Jane Clifford, Ph.D.
D. Walter Cohen, D.D.S.
PonJola Coney, M.D.
Joanne Conroy, M.D.
Nancy Cook, M.S.
Patricia Cormier, Ed.D.
Linda Cottler, Ph.D., M.P.H., F.A.C.E.
Deborah Crawford, Ph.D.
Nily Dan, Ph.D.
David Danner, Ed.D.
Stephen Davis, M.P.A., M.S.W.
Donna De Carolis, Ph.D.
Joyce De Leo, Ph.D.
Terrence Deal, Ph.D.
Deborah Deas, M.D., M.P.H.
Sandra Degen, Ph.D.
Michele Deverich
John DiBiaggio
Cindy DiBiasi
Luisa DiPietro, D.D.S., Ph.D.
Stephen Director, Ph.D.
Deborah Diserens, M.A., M.Phil.
Verdi DiSesa, M.D., M.B.A.
Teresa Dolan, D.D.S., M.P.H.
Gloria Donnelly, Ph.D., R.N.
Glenda Donoghue, M.D.
Jean Dowdall, Ph.D.
Connie Drisko, D.D.S.
Rhetaugh Dumas, Ph.D.
Jeffrey Dunn, M.D., M.B.A., F.A.C.S.
Pamela Eibeck, Ph.D.
Richard Eisenstaedt, M.D.
Barbara Eiser, M.A., M.C.P., P.C.C.

Cynthia Epperson, M.D.
Anna Epps, Ph.D.
Eddie Erlandson, M.D.
Anthony Esposito Jr., C.P.A.
Karin Esposito, M.D., Ph.D.
Clyde Evans, Ph.D.
Cherae Farmer-Dixon, D.D.S., M.S.P.H.
Philip Farrell, M.D., Ph.D.
Janet Fleetwood, Ph.D.
Amy Fleischer, Ph.D.
Daniel Fogel, Ph.D.
MaryBeth Formby,
Julie Freischlag, M.D.
Linda Fried, M.D., M.P.H.
Amy Friedman, M.D.
Stewart Friedman, Ph.D.
Elena Fuentes-Afflick, M.D., M.P.H.
Susan Furth, M.D., Ph.D.
Gary Gabriele, Ph.D.
Carey Gallagher, M.B.A.
Patricia Gallagher, Ph.D., P.E.
Vanessa Gamble, M.D., Ph.D.
Nancy Gary, M.D., M.A.C.P.
Alice Gast, Ph.D.
Jessica Geiben Lynn, M.A.L.D.
Lois Geist, M.D.
Deborah German, M.D.
Harry Gibbs, M.D.
Thomas Gilmore, A.B., M.Arch.
Amira Gohara, M.D.
Jessi Gold, MD, MS
Marla Gold, M.D.
Larry Goldstein, M.S.
Rose Goldstein, M.D., C.M.
Jim Goodman, J.D.
Barbara Graves, Ph.D.
Bruce Gresh, Ph.D.
Sara Grethlein, M.D., M.B.A, FACP
Deborah Griffin
Maryellen Gusic, MD
Leona Haas, M.S.
Donna Hammond, Ph.D.
Nancy Hardt, M.D.
Sandra Harris-Hooker, Ph.D.
Charles Haughton, M.S.H., R.D.

Jeanne Heard, M.D., Ph.D.
 Eve Higginbotham, M.D.
 Joanne Hilden, M.D.
 Susan Hingle, M.D.
 Karen Holbrook, Ph.D.
 Harriet Hopf, M.D.
 Leo Hopf
 Sharon Hostler, M.D.
 Joseph Hughes, Ph.D.
 Sharon Hull, M.D., M.P.H.
 Susan Hutson, Ph.D.
 John Hutton, M.D.
 Robin Jarrett, Ph.D.
 Jesse Joad, M.D., M.S.
 Ann Jobe, M.D., M.S.N.
 W. Brad Johnson, Ph.D.
 Harry Jonas, M.D.
 Linda Jones, Ph.D.
 Robert Jones, Ph.D.
 Cheryl Junker
 Theodore Kantner, M.D.
 Nadine Kaslow, Ph.D., A.B.P.P.
 Denise Kassebaum, D.D.S., M.S.
 Judith Katz, Ed.D.
 Nadine Katz, M.D.
 Ruth Katz, J.D., M.P.H.
 Sheila Katz, M.D., M.B.A.
 Robert Kegan, Ph.D.
 John Kelly, M.D.
 Joseph Keyes, Jr., J.D.
 Annette Khaled, Ph.D.
 Karen Kim, M.D.
 Darrell Kirch, M.D.
 Maria Klawe, Ph.D.
 Lynn Kochanek,
 Klod Kokini, Ph.D.
 Margaret Kripke, Ph.D.
 Ferne Kuhn, M.Ed.
 Elisabeth Kunkel, M.D.
 Joan Lakoski, Ph.D.
 Howard Landesman, D.D.S., M.E.d
 Pascale Lane, M.D.
 Thomas Langfitt, M.D.
 Winifred Lanoix, Ed.D.
 Sara Laschever
 Christy Lawson, M.P.H.
 Cathy Lazarus, M.D.
 Carol Lefebvre, DDS, MS

Debra Leonard, M.D., Ph.D.
 Janis Letourneau, M.D.
 Allen Lichter, M.D.
 Frank Linnehan, Ph.D.
 Carol Lippa, M.D.
 Anne Litwin, Ph.D.
 David Logan
 Ana Lopez Fuentes, D.M.D., M.P.H.
 Karen Lu, M.D.
 Kate Ludeman, Ph.D.
 Deidra Lyngard, M.F.A.
 Richard MacDonald, M.D.
 Diane Magrane, M.D.
 Sharmila Makhija, M.D., M.B.A.
 William Mallon, Ed.D.
 Denise Marbach, C.P.A.
 Lilly Marks
 Shannon Marquez, Ph.D., M.Eng.
 Sally Mason, Ph.D.
 Cheryl McCartney, M.D.
 Sharon McDade, Ed.D.
 Margaret McGoldrick, M.B.A., M.S.,
 M.Phil.
 Richard McKnight, Ph.D.
 Sue McNeil, Ph.D.
 Donna McNelis, Ph.D.
 Martha Medrano, M.D., M.P.H.
 Louis Meindl
 Carolyn Meltzer, M.D.
 Laurence Merlis, M.B.A.
 Edward Miller, M.D.
 Alicia Monroe, M.D.
 Patricia Monteleone, M.D., M.B.A.,
 M.H.A.
 Teresa Moore Griffin
 Page Morahan, Ph.D.
 Mary Moran, M.D.
 Catherine Morrison, J.D.
 Leslie Morrison, M.D.
 Andrew Mozenter, M.S.
 Donna Murasko, Ph.D.
 Karin Muraszko, M.D.
 Cherry Murray, Ph.D.
 Thomas Nasca, M.D., F.A.C.P.
 Sabina Nawaz, M.S.
 Allen Neims, M.D., Ph.D.
 Kathleen Nelson, M.D.
 Lois Nora, M.D., J.D., M.B.A.

Karen Novielli, M.D.
 Ana Núñez, M.D.
 Mal O'Connor, Ph.D.
 Olufunmilayo Olopade, M.B.B.S.
 Michael O'Mahoney,
 Lynn Oppenheim, Ph.D., M.B.A.
 Eliza Orleans
 Janis Orlowski, M.D.
 Karen Osborne
 Marian Osterweis, Ph.D.
 Karen Otto
 Ana Pajor, Ph.D.
 Alyssa Panitch, Ph.D.
 Cynthia Paris
 Kamala Patel, Ph.D.
 Carol Pearson, Ph.D.
 Steven Peitzman, M.D.
 Elaine Pelley, M.D.
 Howard Peterson, MHA
 Linda Phillips, M.D.
 Stephanie Pincus, M.D., M.B.A.
 Vivian Pinn, M.D.
 Etta Pisano, M.D.
 Paul Plsek, M.S.
 Susan Pollart, M.D., M.S.
 A. Popp, M.D.
 Deborah Powell, M.D.
 Valerie Purdie Greenaway, PhD
 Loretta Raider, M.Ed.
 Swati Rao, M.D.
 Vijay Rao, M.D.
 Michael Reed, B.D.S., Ph.D.
 Ana Reyes, Ph.D.
 Rosalyn Richman, M.A.
 Stephen Rimar, M.D., M.B.A.
 Noreen Robertson, D.M.D.
 Carolyn Robinowitz, M.D.
 Sally Rockey, Ph.D.
 Sally Rosen, M.D., M.F.S.
 Kim Rosenfield
 Arthur Rubenstein, M.B.B.Ch.
 Carol Rumack, M.D.
 Jeanne Ryer, M.S.
 Deepak Sadagopan
 Vinod Sahney, Ph.D.
 Debbie Salas-Lopez, M.D., M.P.H.
 Daniel Schidlow, M.D.
 Laura Schweitzer, Ph.D.

Hélène Seiler, M.S., M.C.C.
Darshana Shah, Ph.D.
Susan Shaman, M.A.
Dan Shapiro, Ph.D.
Virginia Shepherd, Ph.D.
Paula Shireman, M.D., MS, MBA
Sally Shumaker, Ph.D.
Susan Shurin, M.D.
Cathie Siders, Ph.D.
Marilyn Sifford, M.S.
Patricia Simmons, M.D.
Jeanne Sinkford, D.D.S., Ph.D.
Susan Skochelak, M.D., M.P.H.
Judith Skog, Ph.D., M.S.
David Smith, Ph.D.
Janice Smith, M.B.A, Ph.D.
William Smith, D.Phil.
Roberta Sonnino, M.D.
Aradhana Sood, M.D., M.S.H.A.
Jeannette South-Paul, M.D.
Harold Sox, M.D., M.A.C.P.
Jean Spaulding, M.D.
Nancy Spector, M.D.
Lisa Staiano-Coico, Ph.D.
Laura Steinberg, Ph.D.

Edward Stemmler, M.D.
Tony Stovall
Judith Sturnick, Ph.D.
Anthony Suchman, M.D., M.A., F.A.C.P.
Ciro Sumaya, M.D., M.P.H.T.M.
Scott Sumner, M.B.A.
Robert Swanton, M.B.A., M.A.
Michele Szkolnicki, R.N., BSN, MS,
FACHE
Goldie Taylor
Lisa Tedesco, Ph.D.
Amanda Termuhlen, M.D.
Patricia Thomas, M.D.
Melissa Thomas-Hunt, Ph.D.
Patreece Thompson, M.D.
Ann Thor, M.D.
Luanne Thorndyke, M.D.
Noel Tichy, Ph.D.
Jill Tillman, MSN, BN
Claire A. Tillman-Shaffer
Linda Toth, D.V.M., Ph.D.
Stanley Trooskin, M.D.
Samuel Ashby Turner, Jr., Ph.D., PCC
Sharon Turner, D.D.S., J.D.
Elisabeth Van Bockstaele, Ph.D.

Linda Vanasupa, Ph.D.
Michael Vergare, M.D.
Richard von Rueden, M.D.
Mary Lou Voytko, Ph.D.
Peter Walker, M.D.
James Walters, Ph.D.
Steven Wartman, M.D., Ph.D.
Cheryl Watson, Ph.D.
Karan Watson, Ph.D., P.E.
Valerie Weber, M.D., M.S.
Robert Weidner, M.B.A., F.A.C.H.E.
Dennis Westlind, PhD, JD
Sharon Whiting, M.B.B.S.
Leslie Will, D.M.D., M.S.D.
John Williams, Jr., M.D., Ed.D.
John Williams, D.M.D., M.B.A.
Penny Williamson, Sc.D.
Sandra Willsie, D.O., M.A.
Anthony Windebank, M.D.
Linda Wingate, M.Ed.
Lynn Yeakel, M.S.M.
Verna Yiu, M.D.
J. Scott Young, Ph.D., NCC, LPC

PINNACLE AWARD



Awardee:
Katalin Karikó, PhD

In recognition of **Dr. Katalin Karikó's** outstanding leadership contributions and trailblazing achievements.

ELUM COMPASS AWARD

Awardees:

Louito C. Edje, MD, MHPE (ELAM '23)

Amy P. Murtha, MD (ELAM '15)



Dr. Louito Edje was selected as an ELUM Compass Awardee in recognition of her extraordinary embodiment of the quadruple aim, using her personal experience during the pandemic to become a national

voice for vaccine advocacy and equitable care, while maintaining direct patient engagement and contributing to the global conversation on public health. She has led transformative innovations in graduate medical education, including founding a new residency program to preserve primary care access in her community and shaping national training standards that will guide over 160,000 future physicians. Her unwavering commitment to physician well-being is evident through programs like Physician as Artist and her leadership in integrating generative AI to reduce clinician burnout, all while cultivating humanism and mentorship through both large-scale initiatives and personal, meaningful gestures.



Dr. Amy Murtha was selected for the ELUM Compass Award for her outstanding embodiment of the Quadruple Aim—enhancing individual care, improving population health, using healthcare resources wisely, and fostering

joy in work. Her groundbreaking research in maternal-fetal medicine has led to significant advances in the prevention and management of preterm birth, while her leadership has expanded access to comprehensive women's healthcare and driven systemic improvements in academic medicine. Dr. Murtha's unwavering commitment to mentorship, wellness, and equity has cultivated inclusive environments that support the well-being and professional growth of clinicians, scientists, and students alike.

The ELUM Compass award is presented to an ELUM whose work and activities are trail blazing toward some or all of the following quadruple aims:

- Improving the health of populations
- Enhancing the experience of care for individuals
- Modeling appropriate use of health care resources
- Attaining joy in work

Through substantial and sustained commitment, this individual has imagined, created, refined or implemented innovations that enhance the well-being of society. She may have bettered the delivery of care through broadening access, removing barriers, advancing the quality of outcomes, or lessening the burden of interventions. The individual ennobles her profession through personal action, and program building that prevents burnout, enhances self-care and supports

the humanism of physicians, dentists, scientists and others engaged in the art of medicine and the practice of science.

TRANSFORMATIONAL LEADERSHIP AWARD

Awardees:

Julie A. Freischlag, MD (ELAM '97)

Deborah C. German, MD (ELAM '96)

Ana N. López Fuentes, DMD, MPH (ELAM '08)



Dr. Julie Freischlag

was selected as a Transformational Leadership Awardee in recognition of her groundbreaking and visionary leadership as the first female chair of surgery in the U.S., her unwavering commitment to mentorship and inclusivity, and her

profound cultural impact across academic medicine. Through her compassionate, empowering leadership style, she has transformed institutions, promoted diverse talent, and inspired countless individuals to pursue excellence and equity in medicine and health sciences.



Dr. Deborah German

was selected as a Transformational Leadership Awardee for her visionary leadership in founding the University of Central Florida College of Medicine, transforming it from an idea into a nationally respected institution with

strong community partnerships and a culture of equity and excellence. She has championed diversity and inclusion through mentorship, leadership development programs, and innovative healthcare initiatives that address underserved populations. Her legacy includes a robust graduate medical education system, impactful interprofessional collaborations, and groundbreaking contributions to the future of academic medicine in Florida.



Dr. Ana López-Fuentes

was selected as a Transformational Leadership Awardee for her visionary leadership, resilience, and dedication to cultural transformation, particularly in times of crisis, as demonstrated by her ability

to guide her institution through the aftermath of a devastating hurricane while maintaining stability and hope. As a mentor and advocate, she openly shares her leadership experiences and challenges, inspiring and supporting a diverse and inclusive network of future leaders in dental education and beyond. Through her national influence, including leadership in the American Dental Education Association, she continues to champion gender equity and the advancement of underrepresented populations, shaping a more just and equitable future in health sciences.

This award is presented to an individual who has demonstrated outstanding and visionary leadership that has contributed significantly to cultural transformation. This individual encourages, inspires, mentors and sponsors a diverse, inclusive and equitable group of clinicians, scientists, educators and staff. This transformational leader motivates others to innovate and create change that will help grow and shape the future success of women and under-represented in medicine and the health sciences leading to a more just and equitable culture.

INSTITUTIONAL AWARD FOR THE ADVANCEMENT OF WOMEN IN MEDICINE AND THE SCIENCES

Awardees: University of Colorado School of Medicine Anschutz Medical Campus
University of Utah School of Medicine



School of Medicine
UNIVERSITY OF COLORADO
ANSCHUTZ MEDICAL CAMPUS

The University of Colorado Anschutz Medical Campus was selected for an Institutional Award for the Advancement

of Women in Medicine and the Sciences due to its long-standing, exceptional support of women's leadership through sustained participation in the ELAM program and the development of impactful, locally driven leadership training initiatives for women faculty. With 36 ELUMs contributing in high-level roles and over 500 faculty trained through its programs, CU-AMC has cultivated a strong culture of advancement, equity, and leadership for women in medicine and science.



HEALTH
UNIVERSITY OF UTAH

The University of Utah School of Medicine is receiving an Institutional Award for the Advancement of Women in Medicine and the Sciences in recognition of its

commitment to creating an environment where women are empowered to thrive and achieve their full potential. The institution has taken a multi-faceted approach to ensure that gender equity is woven into the fabric of their institutional culture, policies, and practices. At the heart of their commitment is their robust mentorship and sponsorship of the Executive Leadership in Academic Medicine (ELAM) and Executive Leadership in Health Care (ELH) programs. Since their first ELAM Fellow in 1998, they have supported thirty women in participating in the career altering program.

This award is given to an institution, organization, or health care system that has demonstrated through word, deed and outcomes a commitment to assuring equitable access to educational and career opportunities, as well as the highest offices of the professions.

LAURA LYNCH ELAM/ELH COMMUNITY IMPACT AWARD



Awardee:

Archana Chatterjee, MD,
PhD (ELAM '08)

Dr. Archana Chatterjee

was selected as the 2025 Laura Lynch ELAM/ELH Community Impact Awardee for her unwavering dedication to the ELAM/

ELH community through mentorship, leadership, and advocacy that consistently uplifts fellows, alumnae, and faculty while advancing the program's mission. As a nationally recognized leader in academic medicine and gender equity, she has created and led impactful DEI initiatives, served as a trusted advisor to numerous rising leaders, and contributed to institutional and national policy shaping the future of women in medicine. Her influence extends through public speaking, scholarly work, and leadership in organizations such as AAMC and CWAMS, making her a powerful force in promoting equity, professional development, and lasting systemic change.

The Laura Lynch ELAM/ELH Community Impact Award recognizes an individual or individuals who have made a significant and positive impact on the ELAM/ELH community. Recipients demonstrate professionalism, commitment and unwavering dedication to fellows, ELUMs, faculty, staff and/or other community members, inspiring others to use their talents and energy to advance the ELAM/ELH program and make a difference in achieving gender equity in academic medicine and/or hospital systems.

HONORS

FOUNDERS CIRCLE

In honor of the visionary founders of ELAM who helped to change the landscape of institutions around the world



D. Walter Cohen, DDS



Patricia Cormier, EdD



Page S. Morahan, PhD



Rosalyn C. Richman, MA

LONGITUDINAL CONTRIBUTIONS TO CURRICULUM



Mary Anne Delaney, MD
(ELAM '08)

Dr. Mary Anne Delaney is being honored for her significant contributions to ELAM's finance curriculum and the positive impact these contributions have had on the program fellows and ELUMs.



Maryellen Gusic, MD
(ELAM '09)



Luanne Thorndyke, MD
(ELAM '02)

Dr. Maryellen Gusic and **Dr. Luanne Thorndyke** are being recognized for their impactful contributions to the ELAM Institutional Action Project curriculum and the meaningful influence these efforts have had on program fellows, ELUMs and institutions.

FOUNDATIONAL IMPACT



Lilly Marks

Ms. Lilly Marks has been a guiding presence since the earliest days of ELAM, sharing her vision, generosity, and an unshakable belief in the program's mission. Her contributions are not just part of the program's history, but they are at its foundation.

PROGRAM CHAMPION OVER TIME



Elizabeth L. Travis, PhD
(ELAM '00)

Dr. Elizabeth Travis is being honored as a steadfast champion of ELAM who has nurtured the program its growth with care, insight, and unwavering commitment. Her influence is woven into the fabric of the program.



Bettina M. Beech, DrPH,
MPH (ELAM '12)

OUTSTANDING PARTNER IN LEADERSHIP

Dr. Bettina Beech is being recognized for her longtime partnership with ELAM as a trusted advisor, Learning Community Advisor, frequent panelist, and thought partner.



FROM THE BEGINNING ELAM PARTNERS

30 years, 30 alumnae. In the last 30 years, University of Utah Health has supported 30 women through ELAM. Some are now at other institutions, and many have stayed. Each is an example of exceptional leadership, wherever they are.



As ELAM celebrates three decades of leadership, we recognize that true success lies not just in achievements, but in the lives we've impacted along the way.

Cheers to 30 Years!

THE SPECTOR FAMILY

Jeffrey, Nancy, Zachary, Paula, Tyler and Hannah



UNIVERSITY of MARYLAND
SCHOOL OF MEDICINE



**Proud to
celebrate**
the Drexel ELAM
program on its
30th year and the
impact of women
in leadership
positions in the
health sciences.



Amanda
Termuhlen, MD
Career and Leadership Coaching

The Executive Leadership in Academic Medicine (ELAM) Fellowship Program

For three decades, ELAM has empowered women in academic medicine, dentistry, public health, and pharmacy to lead with vision, resilience, and purpose.

Today we celebrate the extraordinary journey of ELAM alumnae-trailblazers who have transformed institutions and shaped the future of healthcare.

Congratulations on thirty years of leadership, impact, and innovation-looking forward to many more to come!

Amanda M Termuhlen MD, ELAM Class of 2010



CONGRATULATIONS, ELAM, ON 30 YEARS OF EXCELLENCE!

The AAMC celebrates the remarkable achievements of the Executive Leadership in Academic Medicine (ELAM) program at Drexel University to increase the representation of women in health care leadership.



Celebrating ELAM's
30-year legacy of
transforming the landscape
of women leaders in
Academic Medicine,
Healthcare Professions, and
Health Systems.
CONGRATULATIONS!

Erika T. Brown, PhD
ELAM 2015



EXECUTIVE LEADERS CREATED HERE

BRING ON TOMORROW

 **INDIANA UNIVERSITY**
SCHOOL OF MEDICINE

 **INDIANA UNIVERSITY**
SCHOOL OF DENTISTRY

Visit iu.edu



OF ELAM EXCELLENCE

Congratulations to ELAM and its powerful community of women leaders for three decades of transformative impact!

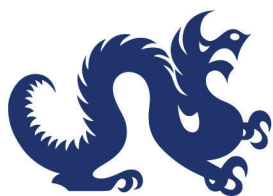
Keck School of Medicine of USC

Congratulations to ELAM on its 30th Anniversary

Proud of our ELAM/ELH fellows and alumni.

Margaret H. Baron, MD, PhD; 2013
 Nina A. Bickell, MD, MPH; 2009
 Stephanie V. Blank, MD; 2020
 Yvette Calderon, MD; 2014
 Michelle S. Cespedes, MD, MS; 2025
 Angela Diaz, MD, PhD, MPH; 2001
 Lindsey C. Douglas, MD, MS; 2024
 Lisa Edelmann, PhD; 2015
 Laura P. Gelfman, MD; 2025
 Monica Kraft, MD; 2018
 Madhu Mazumdar, PhD; 2012
 Sarah E. Millar, PhD; 2014
 Maria L. Padilla, MD; 1998
 Gopi Patel, MD; 2025
 Lynne D. Richardson, MD; 2009
 Neomi Shah, MD, MPH, MS; 2024
 Cardinale B. Smith, MD, PhD; 2023
 Barbara G. Vickrey, MD, MPH; 2013
 Karen S. Zier, PhD; 2002





DREXEL UNIVERSITY
College of
Medicine



30 Years of Impact

Drexel University College of Medicine is proud of ELAM's three decades of preparing women for senior leadership roles in schools of medicine, dentistry, public health and pharmacy. Today, more than 1,500 program alumnae (ELUMs) hold high-level positions — from department head through university president — at 300 U.S. and Canadian academic health centers. Congratulations to ELAM for its 30 years of far-reaching impact and for the ELUMs who drive organizational change.

drexel.edu/medicine/elam

CELEBRATING 30 YEARS OF EMPOWERING WOMEN

CHOP is a proud supporter of Executive Leadership in Academic Medicine and celebrates the program's three decades of advancing women in health sciences leadership positions.

chop.edu



© 2025 The Children's Hospital of Philadelphia
2487 ELAMS 27/02/2025/009-25

CELEBRATING OUR
AMAZING
2025 ELUMS!



*We are so very proud of your
accomplishments and look
forward to your future
contributions to academic
medicine and science!
Leaders @ Best*



Dr. Meilan Han

Dr. Michelle Kim

Dr. Erica Marsh

Dr. Durga Singer

“

We have the power to heal, to advocate,
and to innovate. To the next generation
of women in medicine: Embrace your
passion, trust your knowledge, and
let your compassion guide you.”

Denise Jamieson, MD, MPH

University of Iowa Vice President for Medical Affairs
and Tyrone D. Artz Dean, Carver College of Medicine

IOWA

Carver College
of Medicine



**FIND
YOUR
FUTURE**



TEXAS TECH UNIVERSITY
HEALTH SCIENCES CENTER.



Congratulating
ELAM/ELH for thirty
years of courage,
leadership and
innovation.



Donna N. McNelis, PhD

SPENCER STUART RECOGNIZES EXCEPTIONAL LEADERS

SpencerStuart

www.spencerstuart.com



The University of Texas Medical
Branch is proud to recognize its
faculty who are
ELAM fellows and ELUMs:

Abbey B. Berenson, 2003
Susan Chubinskaya, 2014
Kathryn A. Cunningham, 2000
Lisa A. Elferink, 2011
Celeste C. Finnerty, 2019
Nisha J. Garg, 2015
Kristene K. Gugliuzza, 2002
Lois A. Killewich, 2004
Marilyn Marx, 2001
Joan E. Nichols, 2012
Misha F. Syed, 2025
Cheryl S. Watson, 2005

**Congratulations to
ELAM** for 30 years of
advancing women's
leadership in academic
health centers.



UNIVERSITY of
ROCHESTER
MEDICAL CENTER

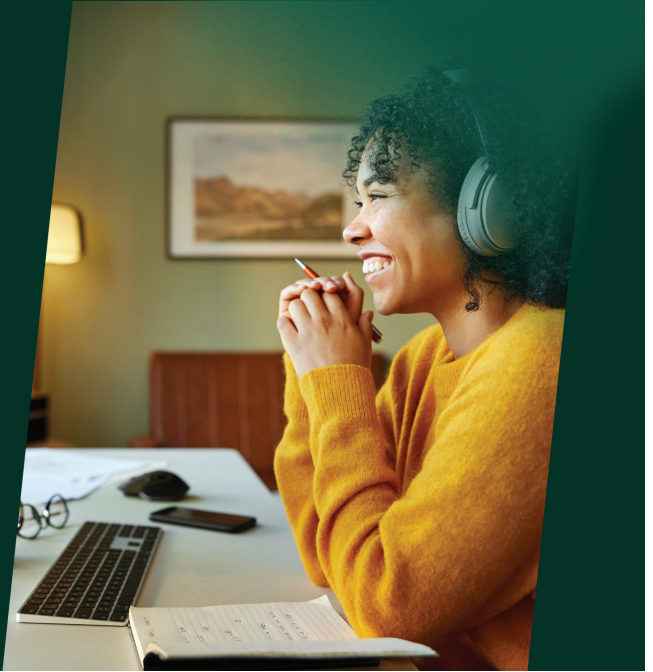


BE MORE THAN

The impact we create spans
entire organizations, but
always starts with people.

Korn Ferry is a global organizational consulting firm, bringing together strategy and talent to drive superior performance for our clients. We work with clients to design their organizational structures, roles, and responsibilities. We help them hire the right people and advise them on how to reward, develop, and motivate their workforce. And we help professionals navigate and advance their careers.

Get started at kornferry.com



Proudly championing
women in academic medicine

Visit us online at medicine.washu.edu.





KATZ SCHOOL OF MEDICINE

The Lewis Katz School of Medicine proudly congratulates the **ELAM fellowship program** in its mission to advance women in leadership.

We honor the vision, expertise, and trailblazing spirit of women physician leaders shaping the future of academic medicine.

“It is not easy to be a pioneer
but oh, it is fascinating!”



-Elizabeth Blackwell, MD

@katztemplemed



Executive Leadership in Academic Medicine

30th Anniversary



University of Chicago ELUM's

Left to right, top to bottom:
Julie Oyler, MD (ELH '24), Stacie Levine, MD (ELAM '18), Sonali Smith, MD (ELAM '25), Deborah Burnett, MD (ELAM '09)
Deborah Nelson, PhD (ELAM '96), Olufunmilayo I. Olopade, MD (ELAM '03), Shabaana A. Khader, PhD (ELAM '16)

Opus Partners⁺

Opus Partners is an independent executive search firm that conducts senior-level searches for clients in higher education, academic medicine, and the broader not-for-profit sector. We are committed to excellence in search.

opuspartners.net

Philadelphia Charlottesville Portland Chicago



Congratulations to ELAM on its 30th anniversary!

Opus Partners is a proud supporter
of the program and all its members



DREXEL UNIVERSITY
**Executive Leadership in
Academic Medicine**
College of Medicine



Celebrating 30 years of ELAM's legacy at the University of Michigan School of Dentistry

Empowering women to lead and transform academic dentistry.

Go Blue!

Changing the world
for 30 years and counting

Congratulations,
ELAM/ELH community!

It's been the privilege of a lifetime.

Sharon Hull, MD, MPH, PCC,
ELAM Class of 2008

 Metta Solutions



**College of
Medicine**

UNIVERSITY OF CENTRAL FLORIDA

CONGRATULATIONS ELAM

on your 30th anniversary.

From the UCF College of Medicine.

med.ucf.edu

CELEBRATING OUR
AMAZING
2025 ELUMS!



*We are so very proud of your
accomplishments and look
forward to your future
contributions to academic
medicine and science!
Leaders @ Best*



Dr. Meilan Han

Dr. Michelle Kim

Dr. Erica Marsh

Dr. Durga Singer



For 30 years, ELAM has **empowered women leaders** in health care, driving progress and shaping the future of academic medicine.



Breaking barriers while breaking ground

*The newly independent CUNY School of Medicine applauds
ELAM for 30 years of its commitment to fostering
women's leadership roles in health sciences*

CUNY School of Medicine ELUMS

Keeping the underrepresented top of mind

Carmen Renée Green, MD - President & Dean

Lisa Coico, PhD - Senior Advisor to the Dean

Maria D. Lima, PhD - Senior Associate Dean, Research & Strategy

Lisa Auerbach, MD - Associate Dean Undergraduate Medical Education

cuny.medicine.edu



Modern Healthcare

440 UNDER 2025



Tonika Lam, PhD
*Global Practice Leader,
Academic Medicine
Senior Client Partner,
Healthcare Services
Korn Ferry*



School of Medicine

UNIVERSITY OF COLORADO
ANSCHUTZ MEDICAL CAMPUS

Congratulations to ELAM on 30 years of leadership excellence!

In proud recognition of our ELAM Fellows, Faculty, and ELUMs:

Jennifer Adams, MD
Marsha S. Anderson, MD
Leslie Appiah, MD
Maryam Asgari, MD, MPH
Emmy Betz, MD, MPH
Laura Borgelt, PharmD, MBA
Cathy Bradley, PhD
Suzanne Brandenburg, MD
Brenda Bucklin, MD
Marisha Burden, MD, MBA
Evalina Burger, MD
Colleen Conry, MD
Julia Cooper, PhD

Robin R. Deterding, MD
Lotte Dyrbye, MD, MHPE
Neill Epperson, MD
Heide Ford, PhD
Laurie E. Gaspar, MD
Melissa Haendel, PhD
Janine Higgins, PhD
Joanne M. Hilden, MD
Denise K. Kassebaum, DDS, MS
Elizabeth Kovacs, PhD
Jean S. Kutner, MD, MPH/MSPH
Anne Libby, PhD
Lela A. Lee, MD

Lilly Marks (ELAM Faculty)
Myra Muramota, MD, MPH
Kristen Nadeau, MD, MS
Ann-Christine Nyquist, MD, MSPH
Judy Regensteiner, PhD
Jane E. B. Reusch, MD
Angie Ribera, PhD
Carol Rumack, MD
Nanette F. Santoro, MD
Ann D. Thor, MD
Margaret Wierman, MD
Shanta Zimmer, MD

Sponsored by the Dean's Office in association with our departments:

Anesthesiology | Biomedical Informatics | Dermatology | Emergency Medicine | Family Medicine | Immunology and Microbiology | Medicine |
Neurology | Neurosurgery | Obstetrics and Gynecology | Ophthalmology | Orthopedics | Otolaryngology — Head & Neck Surgery | Pathology |
Pediatrics | Pharmacology | Physiology and Biophysics | Psychiatry | Radiation Oncology | Radiology | Surgery

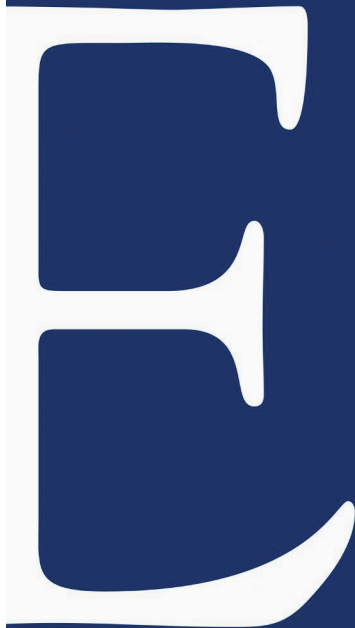


Thrive: Offices for the Faculty Experience

SCHOOL OF MEDICINE

UNIVERSITY OF COLORADO **ANSCHUTZ MEDICAL CAMPUS**

We are proud of our current and former faculty **ELAM** and **ELH** fellows and **ELUMs**:



Shari Barkin, MD, MSHS

Erica Brownfield, MD

Jada Bussey-Jones, MD, FACP

Penny Castellano, MD, FACOG

Amy Chen, MD, MPH, FACS

Carrie Cwiak, MD, MPH

H. Hughes Evans, MD, PhD

Monica Farley, MD

Kathy Griendling, PhD

Divya Gupta, MD

Sheryl Heron, MD, MPH

Deb Houry, MD, MPH

Reshma Jagsi, MD, DPhil

Denise Jamieson, MD, MPH

Nadine Kaslow, PhD

Colleen Kraft, MD, MSc

Michelle Lall, MD, MHS

Lian Li, PhD

Anne Marie McKenzie-Brown, MD

Carolyn Meltzer, MD

Lisa Tedesco, PhD

Mylin Torres, MD

Camille Vaughan, MD

Sandra Wong, MD, MS



EMORY | SCHOOL OF MEDICINE

UNIVERSITY
OF
CALIFORNIA
HEALTH

Congratulations on

30 years

We are proud to celebrate this milestone and honor the incredible ELAM community—past, present, and future.

Here's to 3 decades of excellence—and many more to come!



ADEA congratulates
ELAM
on
30 years
and celebrates the more
than 1,500 ELUMs in
senior leadership roles
at institutions
around the world!

Congratulations to three decades of ELAM leaders

CFAR 

is proud to sponsor
ELAM's 30th
Anniversary Celebration

Your exceptional leadership paves the way
for the next generations of women leading healthcare

WittKieffer



Congratulations ELAM!

Here's to an amazing **30 years**
of advancing women leaders!

From your colleagues at WittKieffer



ACP[®]

American College of Physicians
Leading Internal Medicine, Improving Lives



Sheetal Desai MD, MSED
ELAM 2024
UCI Department of Medicine



Madhu is the queen of
making it reign.

Love,

ELH LC 6 (2024)

Carrie Cwiak, Cami Pfennig,
Liz Gaughan, Nicole Guinn,
Susan Evans, Michele Lossius



The Center for Food Allergy & Asthma Research, Yobee, and Dr. Ruchi Gupta are proud to support and celebrate 30 years of ELAM—empowering women leaders in academic medicine and beyond!



LOVE • NATURE • SCIENCE



CFAAR
RESOURCES



elam

Executive Leadership in Academic Medicine

The ELAM Program, Drexel University College of Medicine

2900 W. Queen Lane, Philadelphia, PA 19129

P: 215.991.8240 • F: 215.991.8171 • E: elamprogram@drexel.edu • W: drexel.edu/elam



DREXEL UNIVERSITY

**Executive Leadership in
Academic Medicine**

College of Medicine