

Creating a Culture of Innovation at Rush University Medical Center

Anu K Antony, MD, MPH, MBA, Dr. Sherine Gabriel, President, Dr. Badri Krishnan, Dean
Dr. Ranga Krishnan, CEO, ELAM Institutional Mentor

BACKGROUND

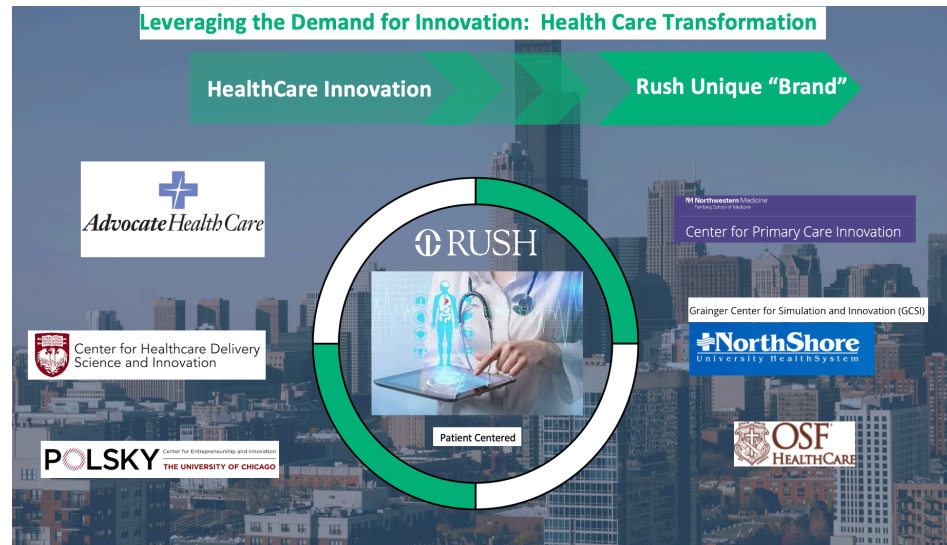
- Rush University System for Health has embarked on a comprehensive philanthropic campaign, with a working goal of \$650 million.
- Great momentum — approximately \$270 million has already been raised.
- Six strategic priorities identified: bone and joint, brain health/neuroscience, cancer, education/workforce, health equity, and innovation and discovery.

OBJECTIVE

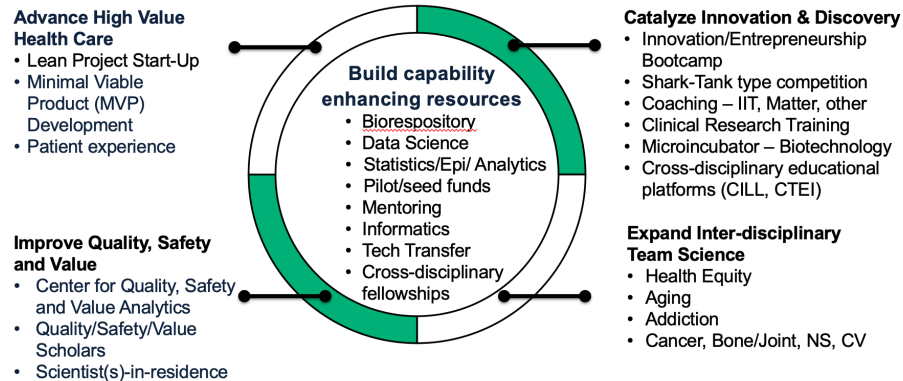
Accelerate innovation and discovery across patient care, research, education and health equity, with meaningful solutions to society's greatest health concerns.

APPROACH

- Transform the health care experience and advance novel person-centered, high value models of health care delivery
- Advance groundbreaking discoveries, from personalized treatments, to creative, practical healthcare solutions leveraging AI, predictive analytics, emerging infection and disaster preparedness and other strategies to uncover barriers to health
- Catalyze healthcare innovation and discovery by creating an academic environment and infrastructure that nurtures talented young investigators and seasoned research faculty alike propelling promising ideas and yielding life-changing discoveries



Rush Institute for Innovation & Discovery (RI²D):



Partners and Models of Excellence:

Partners: Matter, IIT, UIC, Innovation Horizons
Models: Pennovation Center, TMC Innovation, Microincubators



DISCUSSION

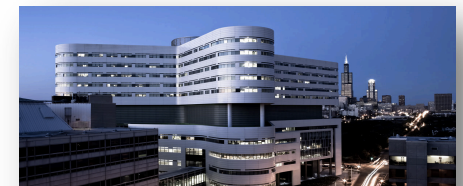
- Innovation efforts siloed
- Identify key stakeholders (faculty, key opinion leaders, Rush leadership including Deans, Chairs, and University leaders).
- SBIR/STTR grant mechanisms
- Lean Innovation / Minimum Viable Product / Innovation Advisory Council
- Educational efforts to operationalize innovation efforts (cross-disciplinary)
- Center for Pandemic Preparedness

SUMMARY

- Opportunity for coordinating efforts and scaling innovation, pivot as pandemic needs manifest - reconceptualize
- RI2D defining priorities - incorporating internal and external partners, legal mechanisms to facilitate research, patent prosecution, and virtual platforms for transforming culture

ACKNOWLEDGMENTS

Presented at the 2020 ELAM®Leaders Forum supported by the Offices of the CEO, President and Dean.



Excellence is just the beginning.