

Abstract: 2017 ELAM Institutional Action Project Symposium Project

Title: The Center for Health Equity Transformation (CHET)

Name and Institution: Nancy E. Schoenberg, Ph.D. University of Kentucky, College of Medicine

Mentor/Collaborator: Robert DiPaola, MD, Dean, UK College of Medicine
Jenna Hatcher, Ph.D., Co-Director of CHET, UK College of Nursing

Background: Kentuckians suffer among the highest rates of the nation's leading causes of disease, with rural, racial/ethnic and lower socioeconomic status groups disproportionately burdened. UK's new health disparities research facility; strategic plan; enhanced research funding to improve health equity; and a critical mass of stellar UK researchers align to support the development of CHET. Nationally, universities have made significant investments in health equity research and training through health equity research centers.

Purpose/Objectives: CHET will generate and disseminate knowledge to reduce inequitable health outcomes by facilitating and enhancing innovative, high quality, transdisciplinary and impactful research and training.

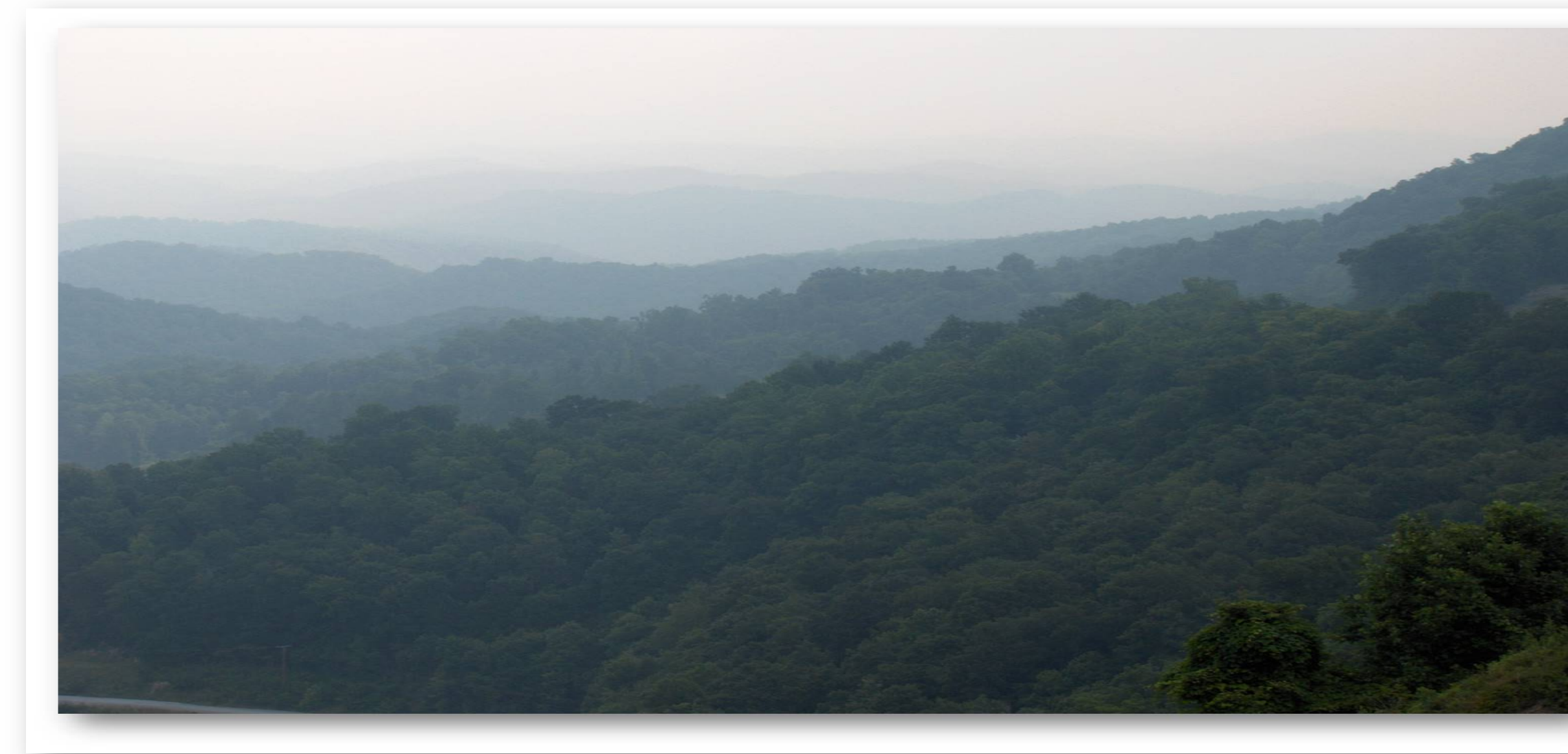
Methods/Approach: CHET will provide enrichment through scholarly enrichment, and publication, presentation, and grant assistance. CHET will contain 3 core facilities: (1) biostatistics and research design; (2) technology-mediated health interventions; and (3) community outreach and connectivity.

Objective: Achieve health equity through enhancing			
Training	Evaluation metric	Research	Evaluation metric
Identify & engage junior scholars	2017: 10 scholars 2018: 15 scholars 2019 & beyond: 20 scholars	Identify & engage faculty affiliates	# of affiliates; distribution across university
Offer internships in health equity	2017: 1 intern 2018: 2 interns 2019 & beyond: 4 interns	Conduct seed grant competition	2 seed grants per year, increasing by 2 awards each year
Develop a student ambassador program for health promotion	2019: 4 students to engage in health promotion projects in their home communities	Encourage collaboration across disease groups	Document new research collaborations (projects, publications, presentations, grants) across 2+ diseases
Activities related to both training & research		Evaluation metric	
Use of biostatistical & research design core		# Consultations. After 3-2019: % effort on grants	
Use of technology-mediated health intervention core		# Consultations. After 3-2019: % effort on grants	
Use of community outreach and connectivity core		# Consultations. After 3-2019: % effort on grants	
Provide scholarly enrichment through well attended lectures and workshops		Offer 4 high profile lectures per year & 2 workshops, with attendance of at least 25 people.	
Offer logistical support for publications, presentations, & grants		Provide >10 faculty/grad students with materials & consultations for grants & scholarly products	
Enhance productivity on health equity-related grantsmanship, publications, & presentations		Apply for extramural funding (T32, PRIDE (NIH) program, Center grants), pubs, presentations.	
Increase awareness of CHET		Website hits; program attendance	
Increase diversity in hiring and graduate students		2 underrepresented faculty & graduate students	

Impact: Bringing together established and emergent scholars, we aspire to improve health equity in Kentucky and beyond.

Background

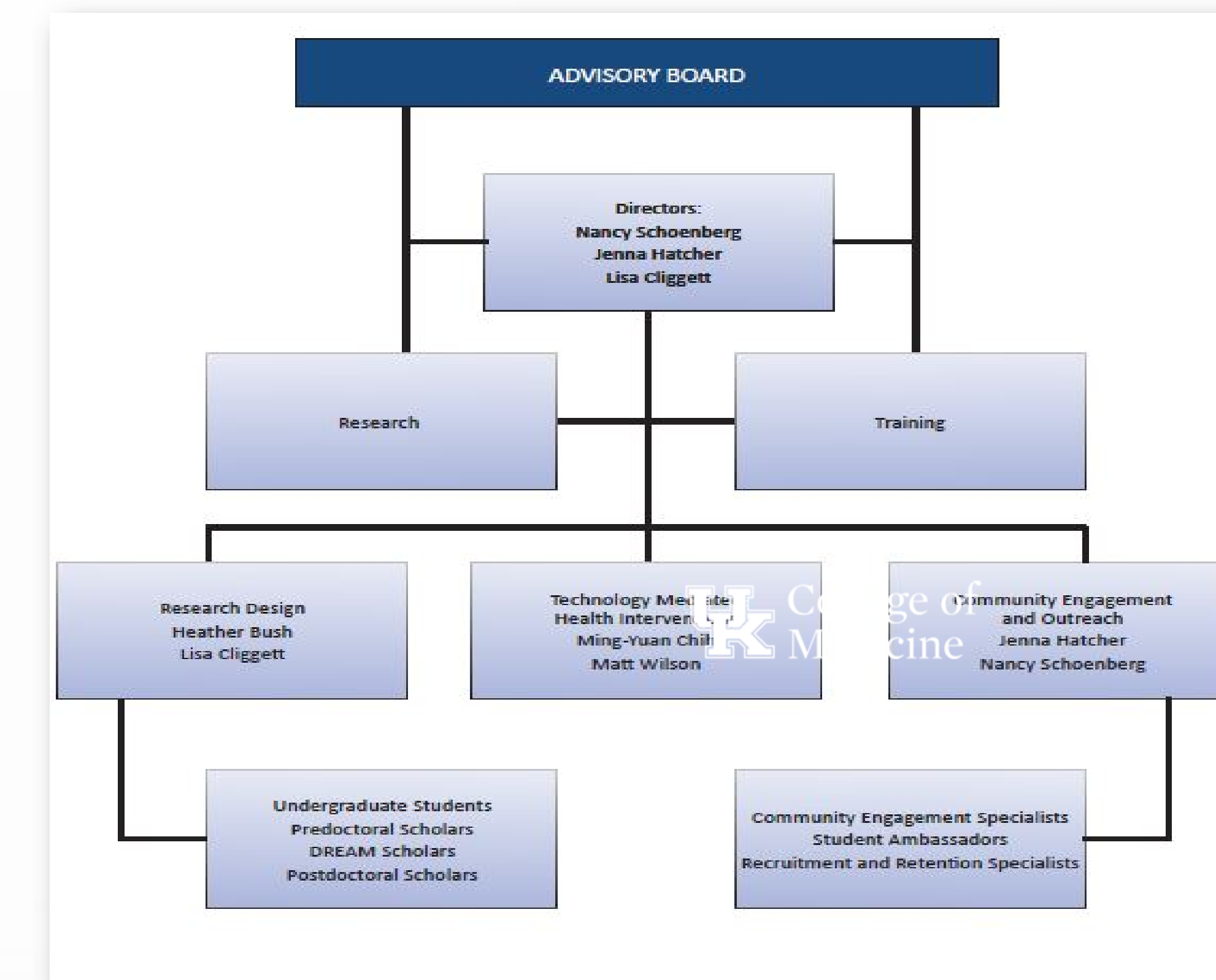
Kentuckians suffer among the highest national rates of morbidity and mortality from cardiovascular disease, cancer, substance abuse, diabetes, and obesity. The burden of these diseases falls disproportionately on rural, racial/ethnic and sexual minorities, and lower socioeconomic status groups. A confluence of circumstances optimizes the present time to bring together essential resources to improve health equity, including the Kentucky legislature's major investment in a health disparities research facility (\$265 million research building); implementation of UK's strategic plan (emphasizing community engagement, transdisciplinary research, and student success); new calls from foundations and federal agencies to combat health disparities; and a critical mass of stellar UK faculty and students. Most UK benchmarks and aspirational universities have made significant investments in health equity research and training through such centers, enhancing scholarly productivity and facilitating recruitment of underrepresented minorities.



Kentucky's health inequities necessitate a coordination effort

KY Rank		KY Rank	
Cancer deaths	50	Preventable hospitalizations	50
Heart attack	49	Children in poverty	49
Drug deaths	48	Outcomes	47
Stroke	45	Overall health	45
Diabetes	45		
CV death	43		
Obesity	39		

Source: United Health Foundation, America's Health Rankings, 2015 Annual Report



Organizational Chart for the Center for Health Equity Transformation

Aims & metrics for evaluation

Enhance the capacity of UK researchers to effectively compete for numerous funding opportunities to conduct high impact health equity research	
Aim	Metric
Enhance faculty engagement in health equity programming	# of affiliates; attendance at workshops, lectures, and events; # of applications for pilot funding
Enhance trans/multidisciplinary collaboration	# of Colleges and Centers of affiliates; bibliometric analyses; network depiction of collaborations across units; evidence of team science (e.g., MPI grants)
Increase health equity scholarly products	# of CHET-originated publications and presentations
Increase health equity grant activity	# of CHET-originated extramural grants submitted; # of CHET-originated extramural grants funded (success rate)
Grow the number, capacity, and synergy of health equity researchers through training and professional development to undertake innovative, transdisciplinary science	
Aim	Metric
Involve students (undergraduates and graduates) in health equity programming and research	# of majors and course attendance (Health, Society and Population and CPH's Bachelor of Public Health); attendance at CHET seminars, workshops, events
Recruit and retain graduate students and faculty for under-represented populations	Recruit and retain at least four underrepresented minority graduate students and one faculty member annually
Obtain training grants	# of CHET-originated training grants submitted and # of CHET-originated grants funded (success rate)
Increase health equity publications and presentations among students and trainees	# of CHET-originated peer-reviewed publications and presentations



Purpose, objectives, & strategies:

Purpose:

With members representing all 16 UK Colleges, CHET will coordinate transdisciplinary, translational health equity research and training efforts across diseases and behaviors; rectify our current competitive disadvantage in attracting and retaining traditionally underrepresented students and faculty; and eventually enhance our focus on global health inequities.

Objectives & Strategies:

- (1) Grow the number, capacity, and synergy of health equity researchers through training and professional development to undertake innovative, transdisciplinary science
- (2) Enhance capacity of current UK researchers to effectively compete for numerous funding opportunities to conduct high impact health equity research



CHET activities, objectives, and personnel

Objectives: Enhance health equity research productivity & promote health equity training

Provide scholarly enrichment and technical assistance (Key Personnel: CHET directors, affiliates, guest scholars).

Activities:

- Seminar series, methods workshops
- Pilot funding
- Customized boilerplate materials
- Research consultations
- Grant review
- Access to databases and data sources

Provide access to unique cores to increase scholarship

Activities:

- Research design: Heather Bush & Lisa Cliggett
- Technology-mediated health interventions: Ming Chih & Matt Wilson
- Community engagement and outreach: Jenna Hatcher & Nancy Schoenberg

Foster an inclusive community of scholarly excellence by promoting educational and professional opportunities

Activities:

- Provide education and professional development opportunities, including access to majors and courses (Lisa Cliggett, Katie Cardarelli); DREAM scholars program (Jenna Hatcher); Student Ambassador Program (Nancy Schoenberg, Mark Swanson)
- Expand underrepresented minority faculty and graduate student hiring and retention (Jenna Hatcher)
- Obtain training grants (Lisa Cliggett, Heather Bush, Nancy Schoenberg, affiliates)

Summary & next steps

CHET is committed to training the next generation of health researchers in foundational transdisciplinary knowledge to achieve health equity transformation, ensuring that Kentuckians, and those beyond, will have better chances for genuinely improved health outcomes. Through three dynamic core functions (research design, technology mediated interventions, and community outreach and engagement), we will enhance research and training opportunities.

In the future, we will expand our mission by:

- Earning UK Center designation
- Receiving extramural support to enhance productivity and training
- Increasing our attention to focus on addressing global health equity

Acknowledgements: Support has been provided by UK's College of Medicine, most especially Dean Robert DiPaola, Associate Dean Michael Rowland, Department of Medical Behavioral Science Chair Carl Leukefeld; UK's College of Nursing; and UK's College of Arts & Sciences.

