

ABSTRACT: 2013 ELAM Institutional Action Project Poster Symposium

Project Title: Clinical / Translational Research Scholarship (CTRS) Program at Texas Tech University Health Sciences Center – Amarillo Campus

Name and Institution: Rakhshanda Layeequr Rahman; Texas Tech University Health Sciences Center-Amarillo

Collaborators: School of Medicine, Clinical Research Unit, Faculty Development Unit and School of Pharmacy

Background, Challenge or Opportunity: Texas Tech University Health Sciences Center (TTUHSC) Amarillo campus has six clinical departments in the School of Medicine; and three departments in the School of Pharmacy (SOP) with a total of 88 faculty members combined. There are a total of 19 full professors, 25 associate professors and 44 assistant professors in both schools on the clinical (non-tenure) track. Whereas basic science faculty is heavily engaged in research, it has been difficult to increase productivity on the clinical and translational research side. This is evidenced by an average of 38 clinical/translational publications per year. Informal discussions with faculty members highlight several barriers that hinder progress in this area including lack of structured mentorship, statistical research design help and lack of accountability.

Purpose/Objectives: the overarching goal of the CTRS program is to build a research collaborative between the School of Medicine and the School of Pharmacy that would enhance the research profile for both schools.

Methods/Approach: The strategic approach taken for the CTRS program is: (i) identify the alignment of the project with mission and priority through tier I stakeholder dialogues (president and provost), (ii) gauge level of interest through survey of tier III stakeholders (clinical non-tenure track faculty), (iii) Identification of key personnel and support systems for project development, and (iv) Presentation of project plan to the tier II stakeholders (regional dean and department chairs). The project will focus on curriculum development targeting barriers identified by the faculty members and identification of mentor faculty with specific expertise. The gaps in available resources that are not available within the system and require additional funding and hiring will be identified. This comprehensive proposal will then be submitted to the office of the provost for funding request with a plan to pilot the project at the beginning of FY2014 (9/1/2013).

Outcomes and Evaluation: The CTRS project will be evaluated using both descriptive and analytical variables. Faculty survey will be conducted annually to assess satisfaction with research support system and curriculum. This will provide coincident indicator for quality improvement. Leading indicators will be the percent increase in rate of clinical / translational publications, % increase in grant dollars, and time to promotion for non-tenured faculty members.



Clinical / Translational Research Scholarship (CTRS) Program

Rakhshanda Layeequr Rahman - Texas Tech University Health Sciences Center, Amarillo

“Presented at the 2013 ELAM® Leader’s Forum”

Background

- Texas Tech University Health Sciences Center (TTUHSC) Amarillo Campus has 6 department in the School of Medicine (SOM) and 3 departments in the School of Pharmacy (SOP)
- Academic Faculty Ranks (non-tenure track)
 - ✓ Professors 19
 - ✓ Associate Professors 25
 - ✓ Assistant Professors 44
- # of clinical/translational publication 38/yr.
- Combined SOM/SOP NIH Rank 106/138

Vision

The Texas Tech University Health Sciences Center will be recognized nationally as a top-ranked health sciences university

Mission

To improve the health of people by providing educational opportunities for students and healthcare professionals, advancing knowledge through scholarship and research, and providing patient care and service

Tenure and Promotion Guidelines

... The criteria and areas of performance to be considered in the tenure and promotion decision processes are

- Teaching
- Scholarship
- Clinical Service
- Academically-related Public Service

...faculty is expected to demonstrate excellence in one area (clinical, teaching or scholarship) with meaningful participation in at least one other area...

Challenge

- Barriers to research commitment (faculty focus group)
 - ✓ Time commitments competing between research and maintaining clinical revenues
 - ✓ Lack of specific targeted mentorship to foster research
 - ✓ Lack of disease or specialty focused collaborative teams between SOM and SOP
 - ✓ Lack of emphasis by institutional hierarchy

Objectives

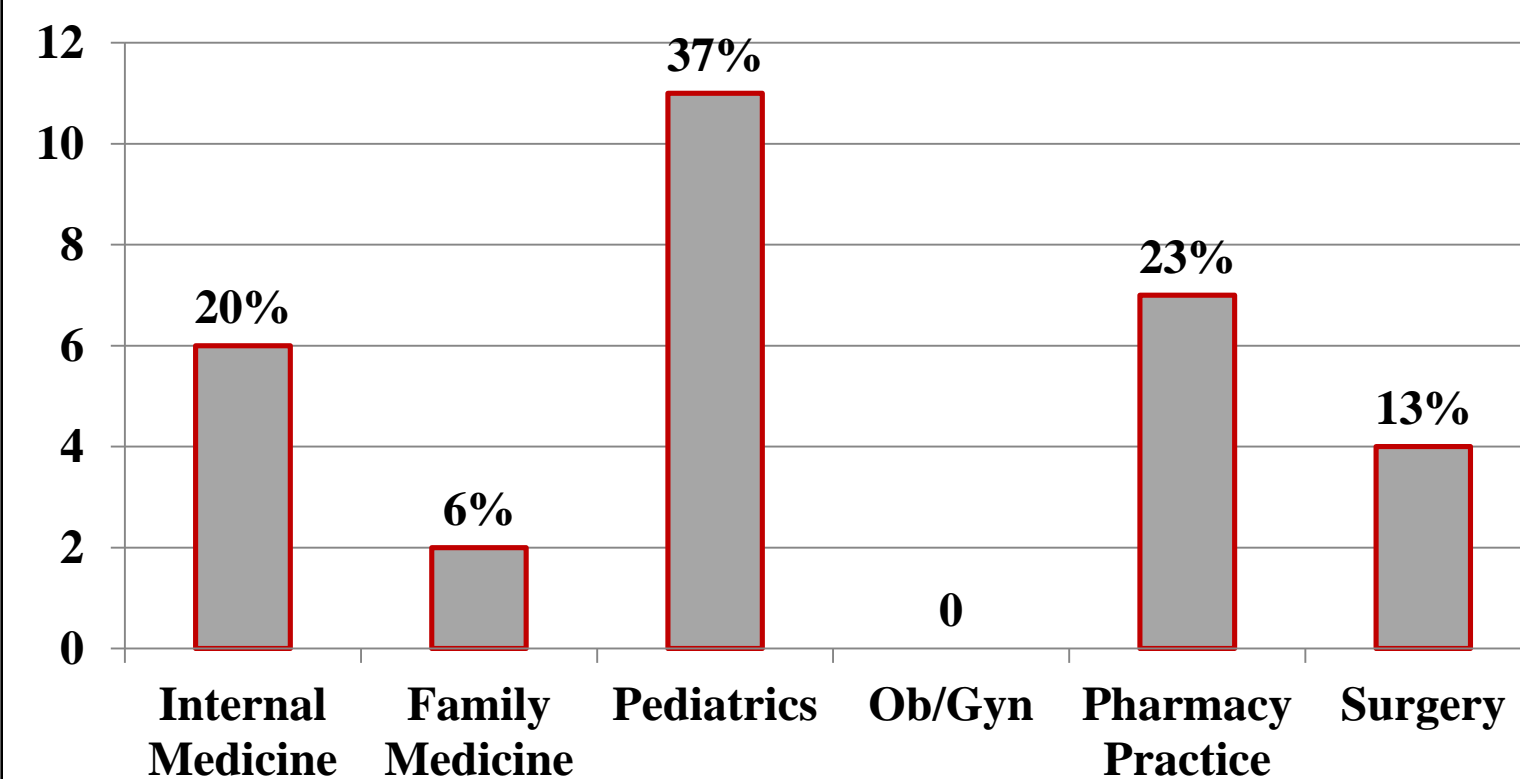
The overarching goal of the CTRS program is to build a research collaborative between SOM and SOP that would enhance the research profile of the schools. The specific purpose is to provide a targeted structured mentorship to the junior-mid level faculty such that:

1. Clinical questions are developed and translated into research protocols, conduct of high quality scientific research, and results in publications and enhanced funding
2. Research efforts of faculty members are supported by department chairs and aligned with individualized plans for tenure and promotion 106/138

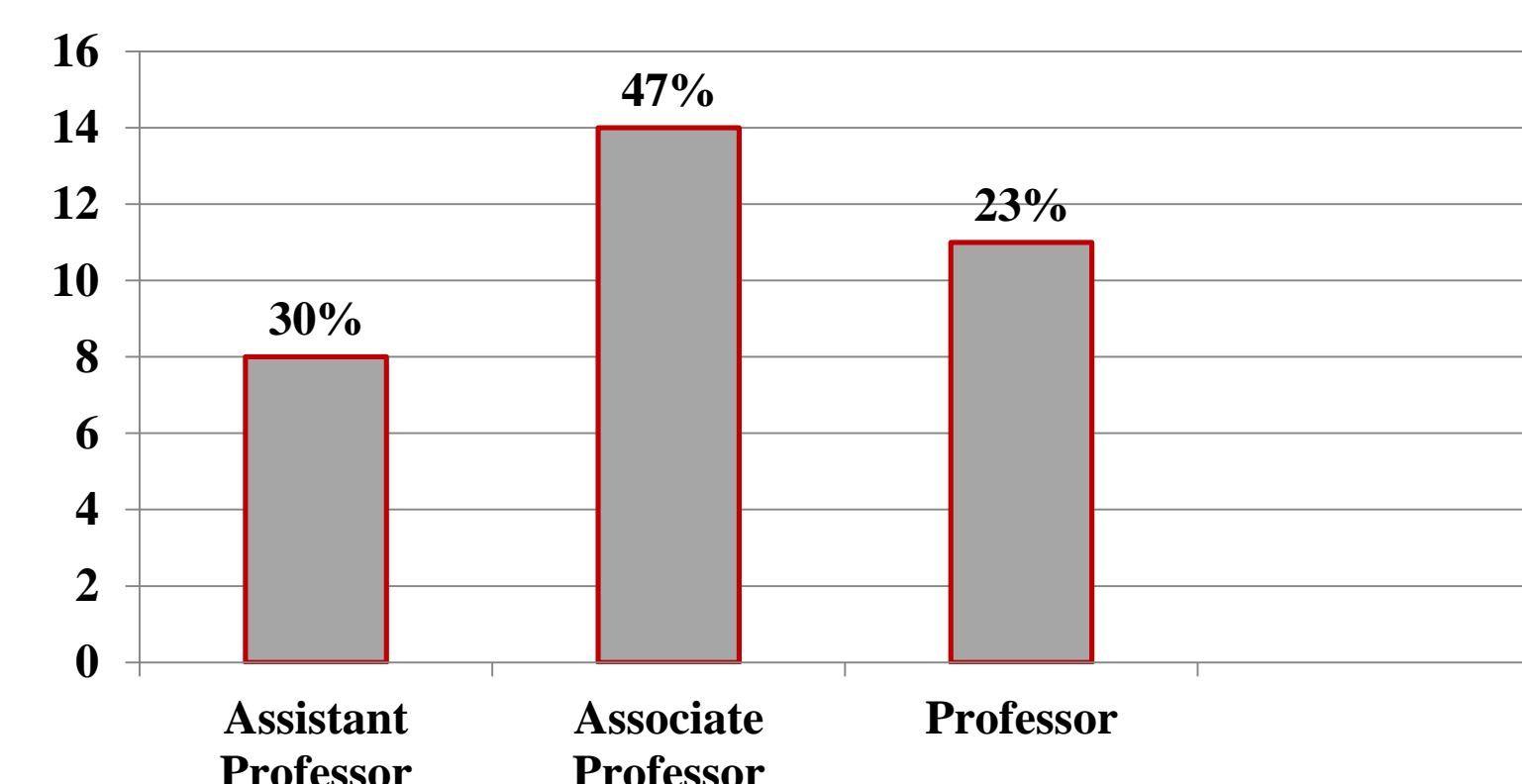
Methods

1. Needs Assessment (focus group, faculty survey)

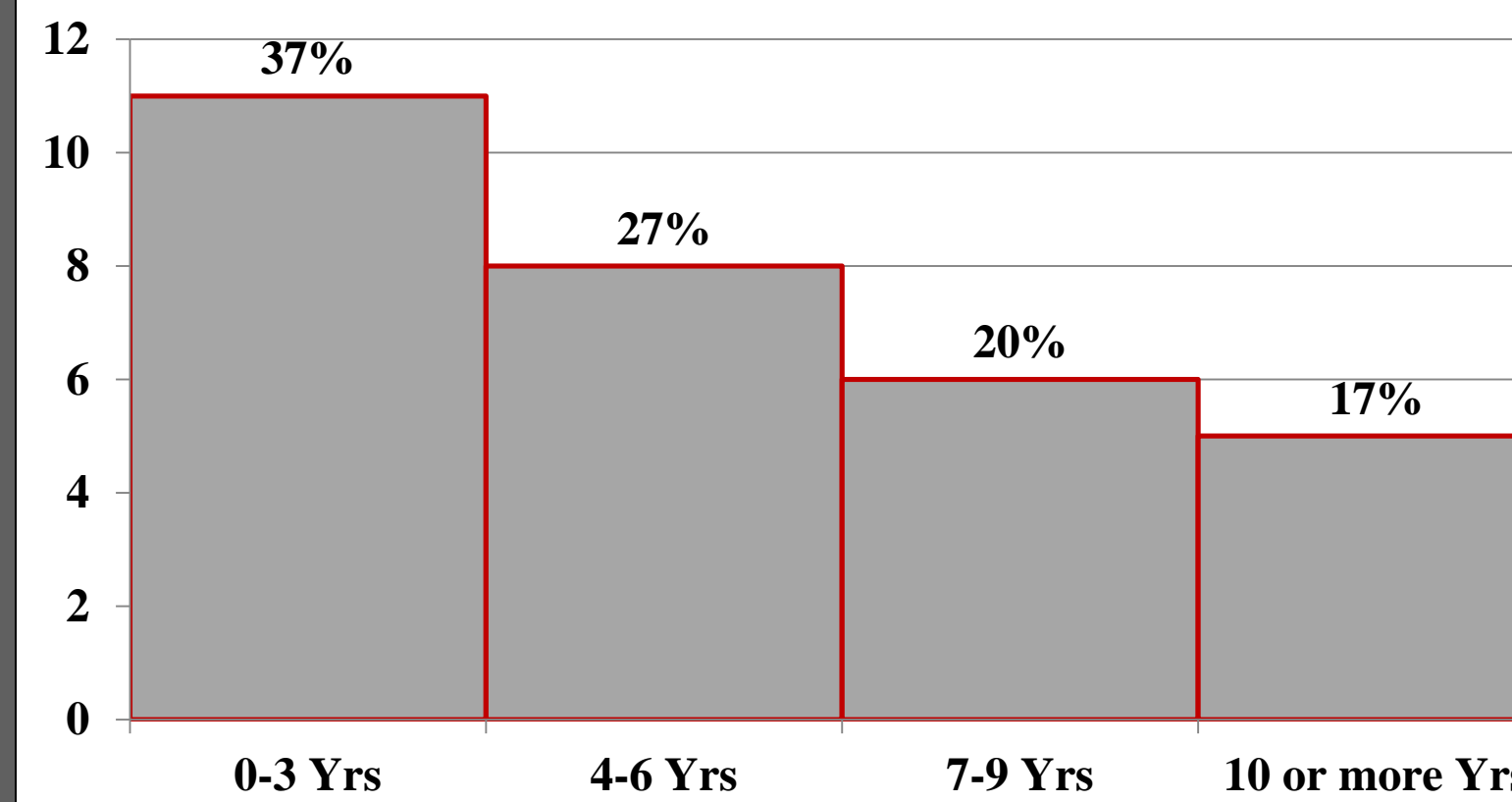
Number of Responders From SOM and SOP



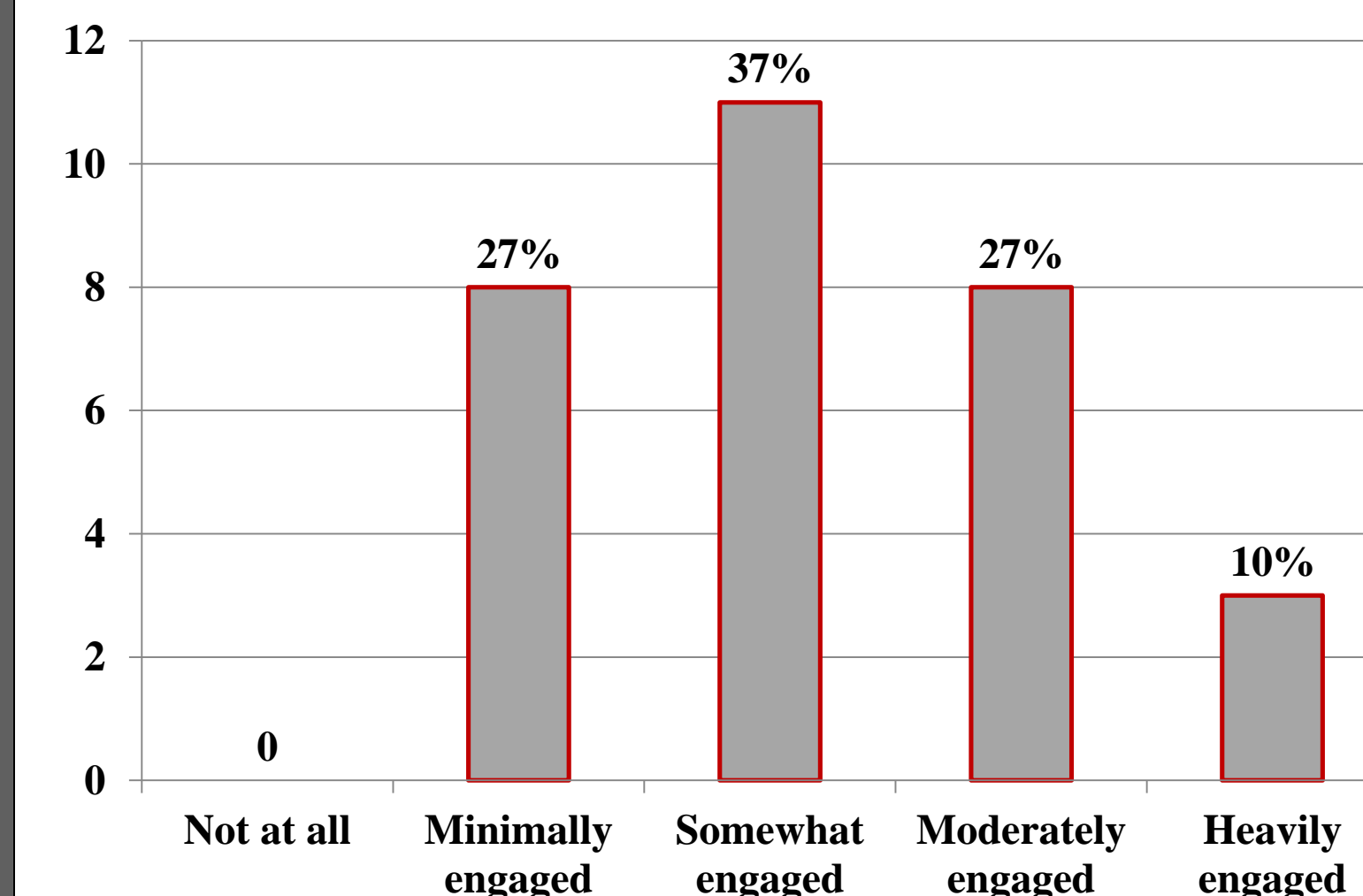
Academic Ranks of Responders



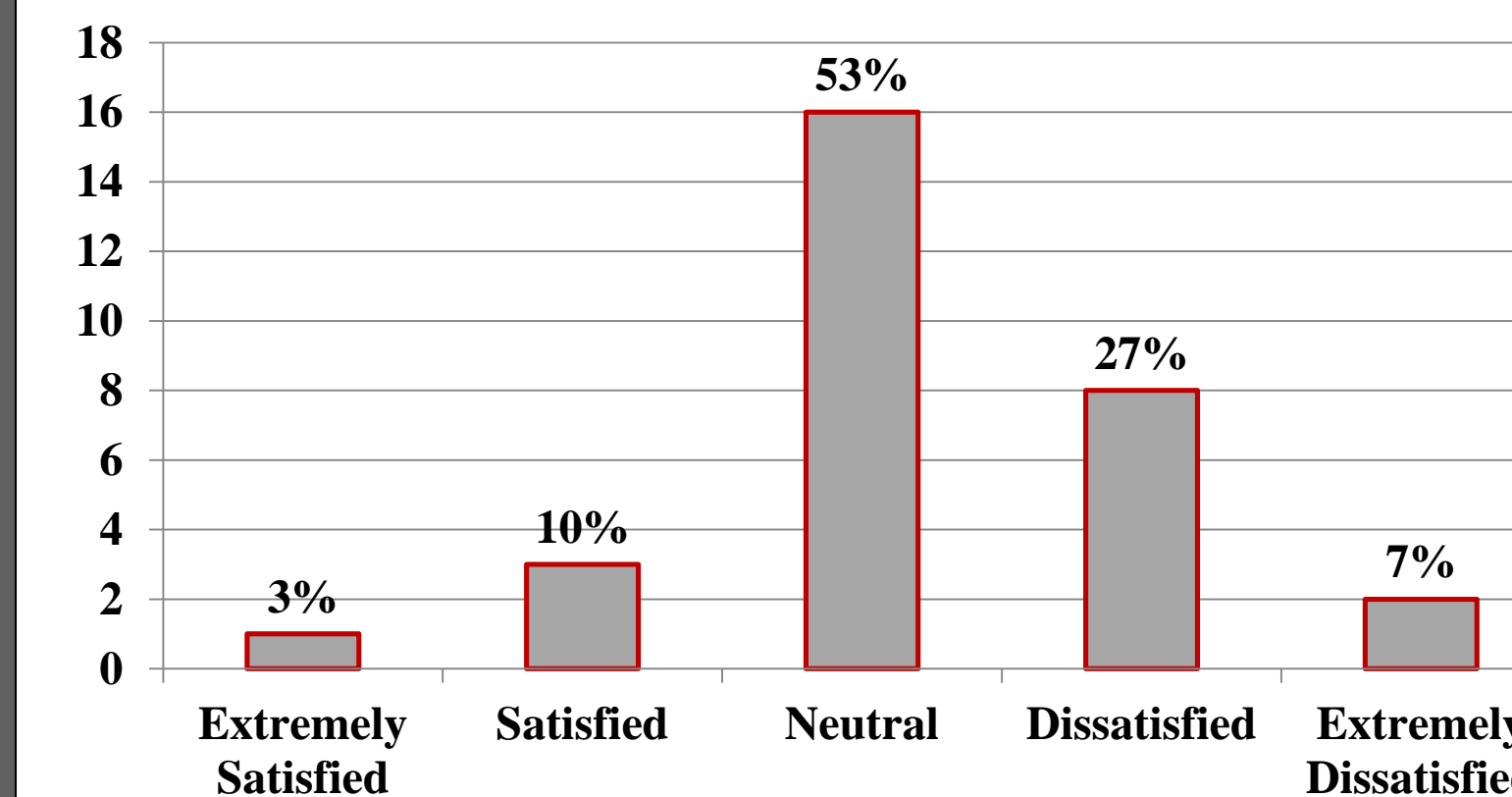
Years in Current Position



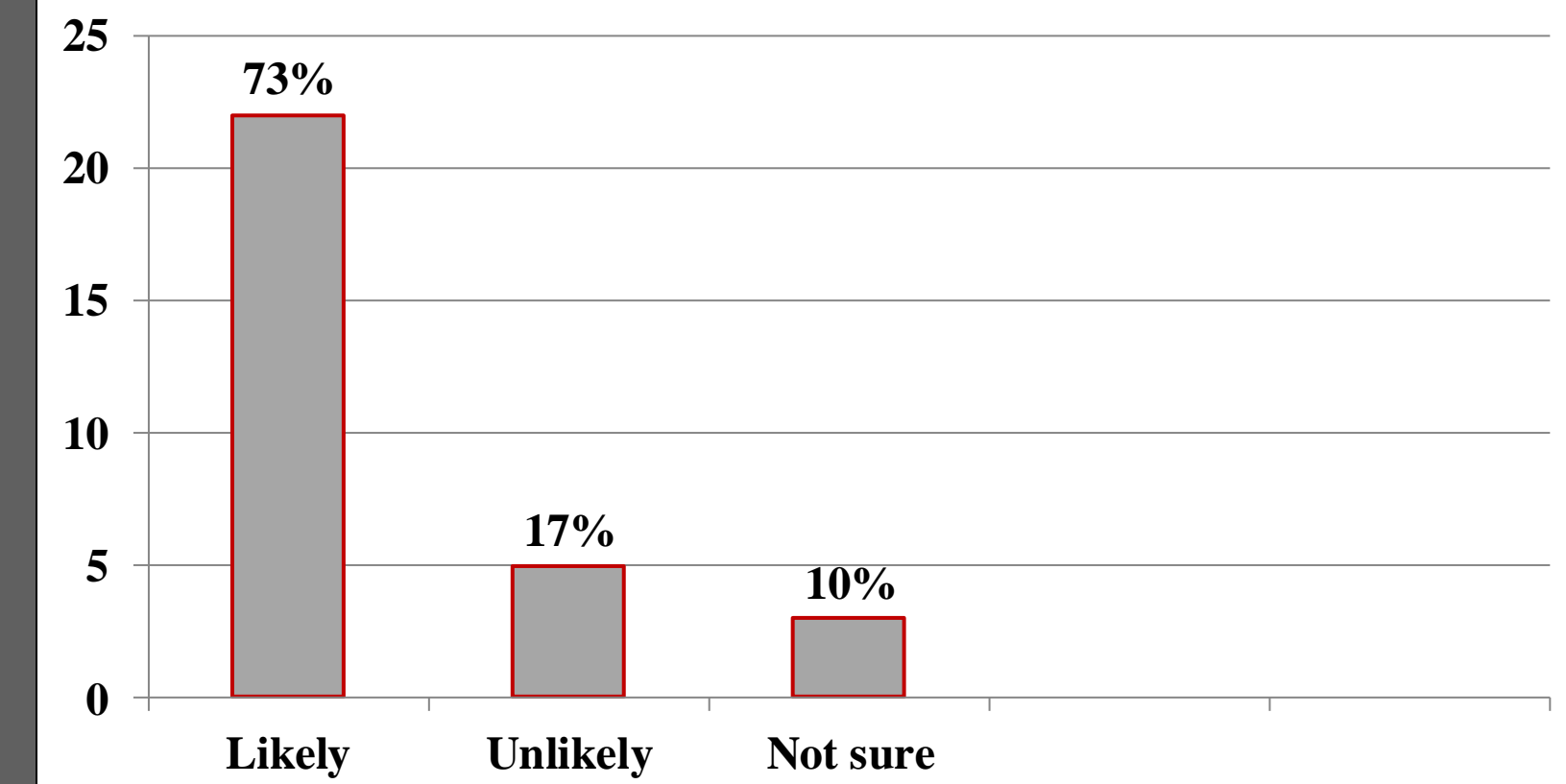
Level of Engagement in Research



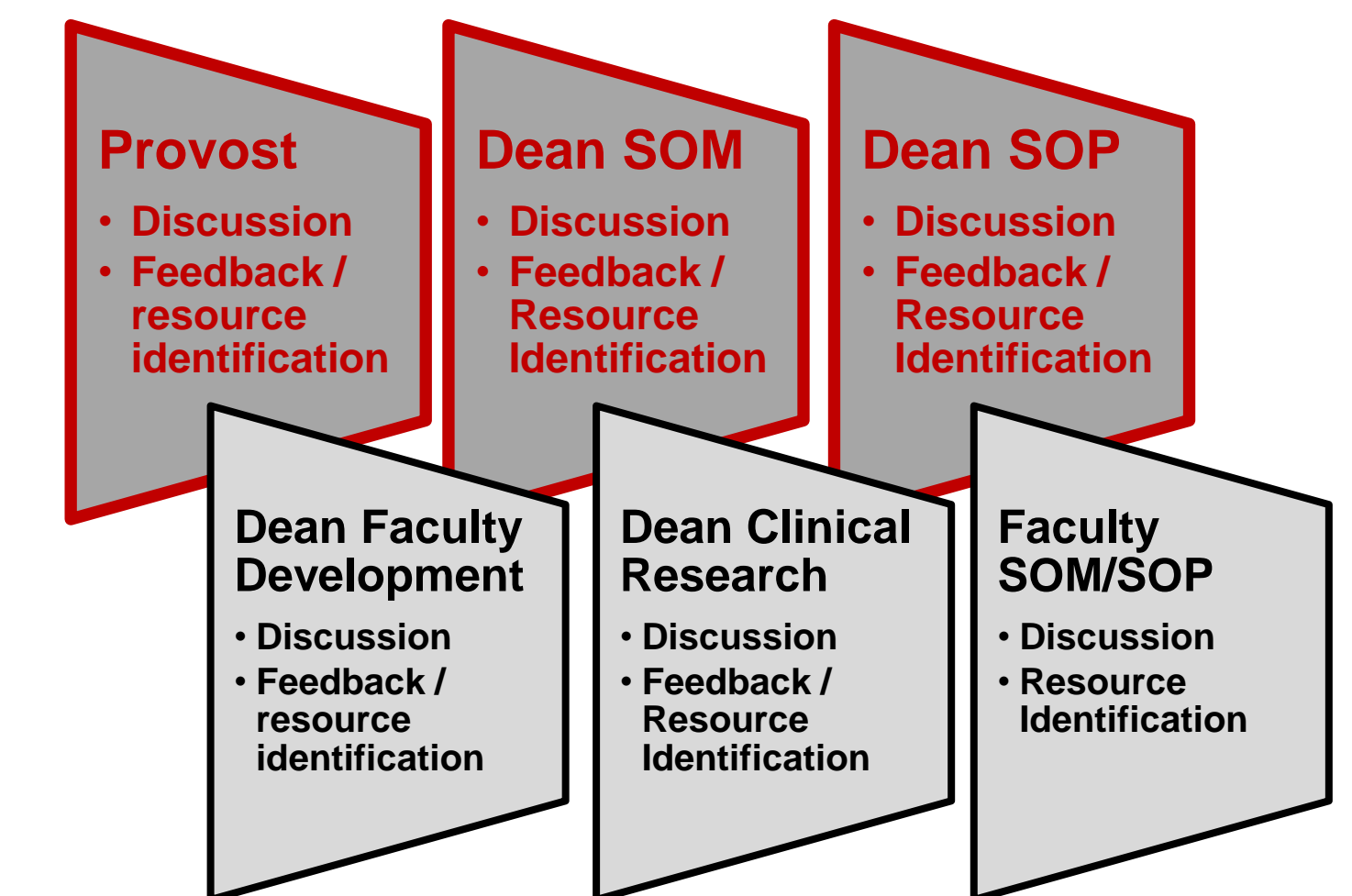
Satisfaction With Current Research Infrastructure



Likelihood for Participation in the CTRS Program



2. Stakeholder Dialogues



3. Resource Identification (found pilots)

- Clinical Research Unit
- Faculty Development Program (SOM and SOP)
- Institutional Review Board
- Deans Funds for research Mission

4. Proposal Development
5. Proposal Submission / Garner Funding

Expected Outcome

1. Qualitative indicators
 - faculty satisfaction
 - level of participation / engagement
2. Quantitative indicators
 - % increase in publications
 - % increase in grant dollars,
 - time to promotion