

ABSTRACT: 2013 ELAM Institutional Action Project Poster Symposium

Project Title: Building a Research and Training Program in Hematology and Blood Disorders

Name and Institution: Margaret H. Baron, MD, PhD, Mount Sinai School of Medicine

Collaborators: Steven Burakoff, MD (Director, Tisch Cancer Institute, TCI); Janice Gabrilove, MD (Director, Hematology-Oncology Clinical Fellowship); Ronald Hoffman, MD (Director, Myeloid Malignancies Program); William Oh, Division Chief, Hematology and Medical Oncology

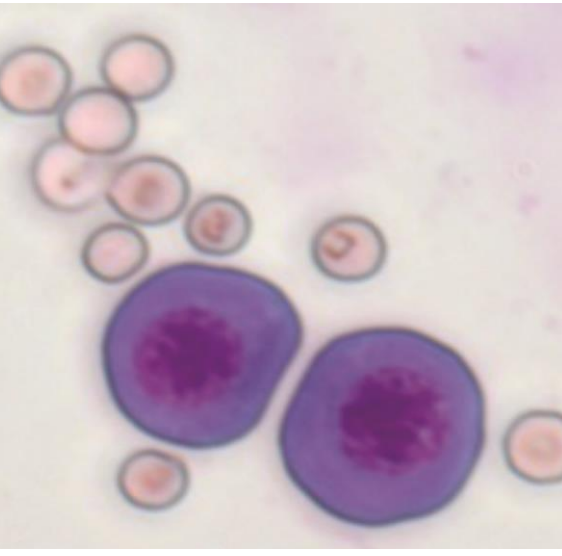
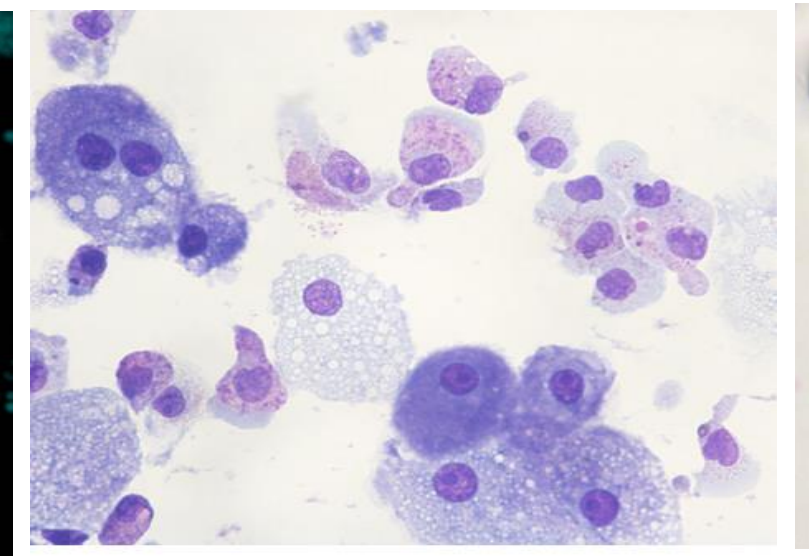
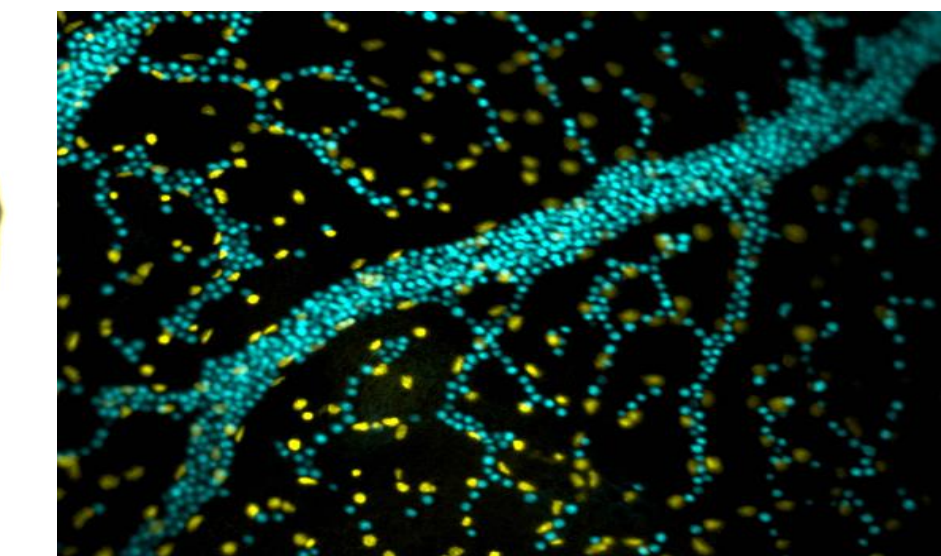
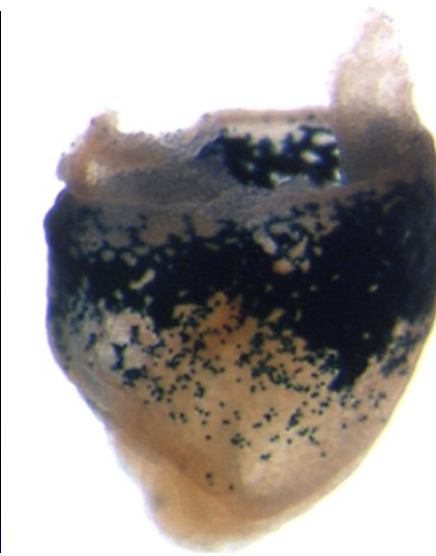
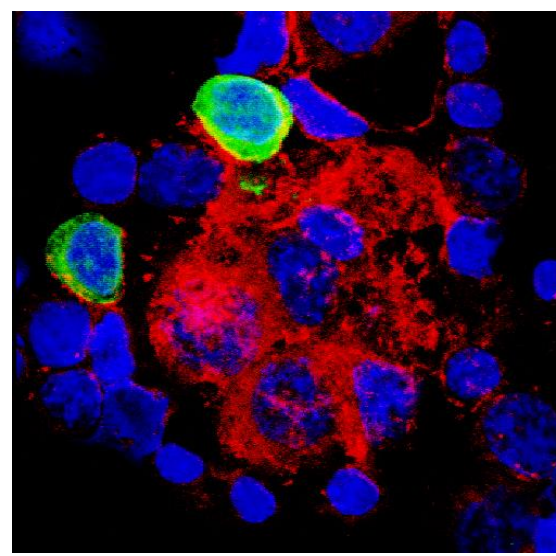
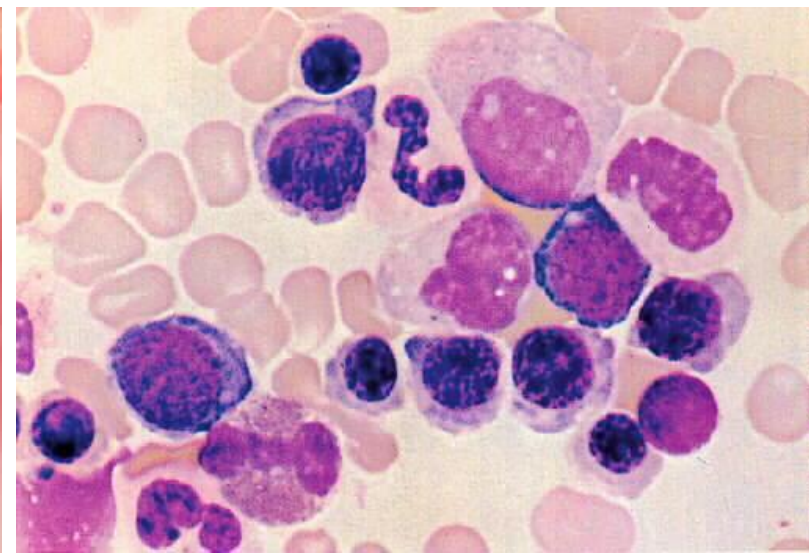
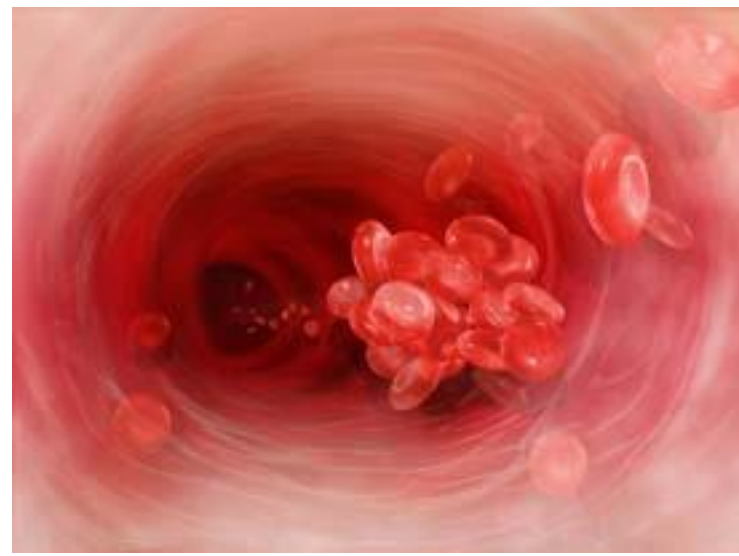
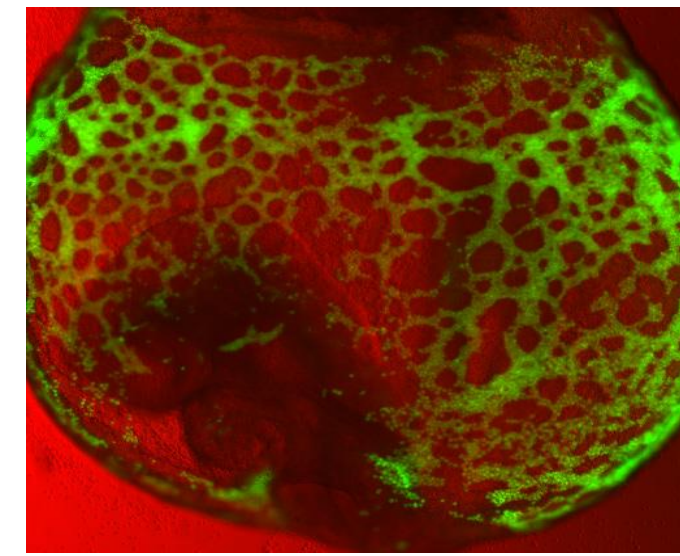
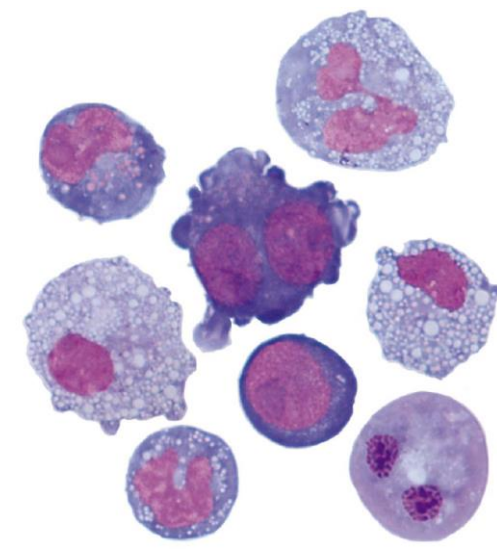
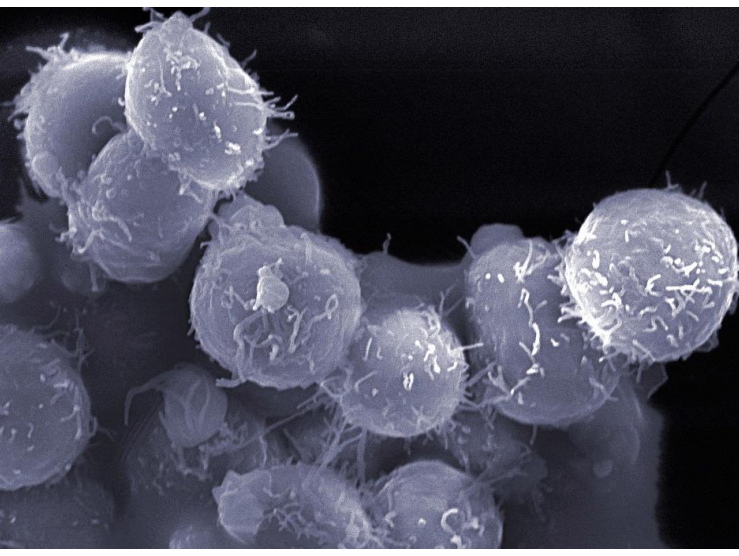
Background and Challenge: Despite considerable progress in elucidating the molecular and cellular mechanisms underlying human hematologic development and disease, a concerted effort is needed to translate increased knowledge into improved diagnostic, treatment, and preventive modalities in medical practice. Although the availability of biomedical research funding in the U.S. has been contracting, there has been an increasing emphasis by the NIH and other agencies on translational, multidisciplinary research. In response to this challenge, a new multidisciplinary Program in Hematology and Blood Disorders (PIHBD) is being established at Mount Sinai to increase our effectiveness in adapting to the current funding environment and to train the next generation of leaders in Hematology research. **Opportunity:** The PIHBD will benefit from the ongoing efforts of the TCI at Mount Sinai to recruit new research and clinical faculty with expertise in leukemia and hematopoietic stem cell biology. It will actively engage all members of the current faculty who are conducting hematology-related research to undertake vigorous discussions with their clinical colleagues about opportunities for major interdisciplinary research initiatives and collaborations that could lead to new translational research grant applications.

Purpose/Objectives: The program, with five components that are being developed concurrently, will build a community of researchers in the broad area of Hematology and Blood Disorders that will be closely integrated with an existing NIH funded T32 Postdoctoral Research Training Program in Molecular and Cellular Hematology (Program Director, MHB) and with the Clinical Fellowship in Hematology-Oncology (Program Director, JG). The T32 grant can fund both postdoctoral and clinical fellows. It will serve as the hub of basic, translational, and clinical hematology research at Mount Sinai by providing an interdepartmental exchange forum to stimulate interactions across the traditional lines of basic, translational, and clinical hematology-related research (benign and malignant).

Methods/Approach: *I. Exchange forum:* Designed to stimulate interactions across the traditional lines of basic, translational and clinical hematology-related research, the format, time and frequency of the forum will be determined at a dinner meeting in early April, 2013. The Forum will provide an opportunity for clinicians to bring interesting clinical questions to the attention of researchers and for basic and translational scientists to establish new collaborations to leverage funding opportunities for translational research. *II. Translational research awards:* Seed funds for new collaborations between clinicians and researchers in benign hematology will be made available by the TCI (4 grants) to supplement an existing TCI Development Fund program for cancer-related projects. *III. Faculty recruits:* To fill gaps in the areas of leukemia and hematopoietic stem cell biology, efforts are ongoing to recruit new faculty with clinical and/or research interests in these disciplines. *IV. Clinical Fellowship in Hematology-Oncology:* To attract more applicants interested in research, thereby increasing the pipeline for T32 eligible trainees, clinical fellows may now choose single board certification in Hematology or Oncology, reducing clinical training period and accelerating entrance into the lab. Beginning July 2014, new fellows will be required to spend at least one year in a laboratory. *V. T32 Research Training Program in Molecular and Cellular Hematology:* A new monthly Research and Career Development Meeting for trainees and program mentors will begin in late spring, 2013. An annual Hematology Research Symposium will be initiated in fall, 2013. With its theme and speakers to be selected by the T32 trainees, the symposium will include an afternoon meeting of T32 trainees, mentors, and members of the T32 External Advisory Board to discuss trainee research and career goals.

Outcomes and Evaluation: The invitation to a planning meeting for the Forum has been enthusiastically received by faculty, with ~25 confirmed attendees. Metrics for Program evaluation: collaborative publications, research grants, successful translation of findings to clinical care, increased numbers of applicants with research background to clinical fellowship program, and assessment of success (publications and positions obtained) of T32 and clinical fellowship trainees.

Margaret H. Baron, MD PhD, Division of Hematology and Medical Oncology, Tisch Cancer Institute, Icahn School of Medicine at Mount Sinai
Collaborators/Mentors: Steven Burakoff, MD (Director, Tisch Cancer Institute, TCI); William Oh, Division Chief, Hematology and Medical Oncology;
Ronald Hoffman, MD (Director, Myeloid Malignancies Program); Janice Gabrielove, MD (Director, Hematology-Oncology Clinical Fellowship)



BACKGROUND AND CHALLENGE:

Availability of biomedical research funding in the U.S. has been contracting. Increasing emphasis by the NIH and other agencies on translational, multidisciplinary research.

RESPONSE TO CHALLENGE:

New multidisciplinary Program in Hematology and Blood Disorders.

GOALS:

(1) To increase our effectiveness in adapting to the current funding environment and (2) to train the next generation of leaders in Hematology

PURPOSE/OBJECTIVES:

Establish new multidisciplinary Program in Hematology and Blood Disorders that will serve as the hub of basic, translational, and clinical hematology research at Mount Sinai.

METRICS FOR PROGRAM EVALUATION:

Collaborative publications, new research funding, new clinical trials, increased numbers of clinical Heme-Onc fellows with research background, and success (publications and positions obtained) of T32 and clinical fellowship trainees.

METHODS:

I. Exchange Forum:

Meeting designed to stimulate interactions across traditional lines of basic, translational and clinical hematology-related research. Establish new collaborations, leverage funding opportunities for translational research. Create thematic Working Groups.

II. Translational Research Awards:

TCI seed funds for 4 new collaborations among clinicians and researchers.

III. Faculty Recruits:

Fill gaps in leukemia and hematopoietic stem cell research.

IV. Clinical Fellowship in Hematology-Oncology:

To attract more applicants interested in research, thereby increasing the trainee pipeline for our NIH T32 training grant in Hematology Research, clinical fellows may now choose single board certification in Hematology or Oncology, reducing clinical training period and accelerating entrance into the lab. Beginning July 2014, new fellows will be required to spend at least one year in a laboratory.

V. T32 Research Training Program in Molecular and Cellular Hematology:

New monthly Research and Career Development Meeting for trainees and program mentors (begin late spring, 2013). Annual Hematology Research Symposium (Fall, 2013). Theme and speakers to be selected by the T32 trainees; will include afternoon research and career development meeting of T32 trainees, mentors, and members of the T32 External Advisory Board.



Icahn School of Medicine at Mount Sinai



Leon and Norma Hess Center for Science and Medicine
A strength of Mt Sinai is the proximity of research and clinical facilities