



DREXEL UNIVERSITY
College of
Medicine
Office of Faculty

New Faculty Orientation Guide

2022-2023





INTRODUCTION

On behalf of the Office of Faculty, we would like to welcome you to the College of Medicine! The following guide will provide a general overview of our college and features helpful resources and videos from key leaders across our institution.

If you have any questions, please contact us at COM.FAFD@drexel.edu.

The Office of Faculty



Our History

The Legacy Center is the repository for the records and heritage of Drexel University College of Medicine and its predecessor institutions, including Woman's Medical College of Pennsylvania (W/MCP) and Hahnemann University.

Mission Statement

The Legacy Center's mission is to identify, collect, preserve, and make accessible records and special collections that have historical, administrative, and intrinsic value reflecting the history of Drexel University College of Medicine, its predecessor and related institutions and special collections on women in medicine and on homeopathic medicine. The mission includes interpreting these materials and conducting educational outreach for an audience of scholars, K-12 and higher education students, lifelong learners, and others all over the world.



CoM_Archives@drexel.edu



<https://drexel.edu/legacy-center/>



Drexel College of Medicine: Our History

Margaret Graham

Director, Legacy Center Archives & Special Collections



CLICK HERE TO LEARN MORE

DREXEL UNIVERSITY COLLEGE OF MEDICINE TIMELINE



Homeopathic Medical College of Pennsylvania established; later renamed Hahnemann Medical College.

1848

1850 Female Medical College of Pennsylvania established in the same building; later renamed Woman's Medical College (WMC)

A graduate of the first class, Ann Preston becomes dean of Female Medical College of Pennsylvania (renamed WMC) and the first woman medical school dean in the world.

1865

1888 Hahnemann Professor Rufus B. Weaver finishes the first dissection of the complete nervous system, which wins a gold medal at the Columbian Exposition of 1893.



Susan La Flesche Picotte graduates from Woman's Medical College, the first Native American to earn a medical degree.

1889

1891 Drexel Institute of Art, Science and Industry founded.

Eliza Grier, born into slavery, graduates from Woman's Medical College, one of the nation's early African American female doctors.

1897

1938 Catharine Macfarlane, WMC 1898, establishes one of the first uterine cancer screening programs in the nation.



Hahnemann admits its first female students.

1941

1957 Charles Philamore Bailey, MD, Hahnemann '32, appears on the cover of *Time* magazine for his innovative work in cardiac surgery, including the first closed-heart repair of stenosis of the mitral valve.



The last teacher of homeopathy, Garth Boericke, retires, ending the last homeopathy course at the school.

1959

1970 Woman's Medical College changes its name to Medical College of Pennsylvania (MCP) and becomes co-ed.



Drexel Institute becomes Drexel University.

1970

Hahnemann Medical College gains university status as Hahnemann University.

1981

1976 MCP launches the Medical Humanities program (then known as Teaching Program in Human Values in Medicine), one of the first of its kind.



Institute for Women's Health & Leadership established at MCP. Women's Health Education Program launched, the first women's health curriculum in a U.S. medical school.

1993

1988 MCP and its affiliate hospitals join Allegheny Health System.

The Executive Leadership in Academic Medicine (ELAM) program for women accepts its first class of 25 Fellows. More than 1,000 ELAM alumnae hold leadership positions in institutions around the world today.

1995

1993 Hahnemann joins Allegheny Health System. The two medical schools are merged and named MCP Hahnemann School of Medicine, the largest private medical school in the country.



MCPHU School of Medicine becomes Drexel University College of Medicine.

2002

1998 Tenet Healthcare Corporation acquires Allegheny's hospitals; Drexel University agrees to operate the colleges of medicine, nursing and public health under the name MCP Hahnemann University.



The Graduate School of Biomedical Sciences and Professional Studies established.

2013

2010 The state-of-the-art Independence Blue Cross Medical Simulation Center opens.



Tower Health and Drexel agree to develop a four-year regional medical campus in West Reading, Pa., near Reading Hospital.

2018

2014 Kaiser Permanente Sacramento becomes a regional medical campus, joining Abington Memorial Hospital, Allegheny General Hospital, and WellSpan York Hospital.



Foundations and Frontiers is a four-year curriculum that has been divided into three phases. Phase One (years 1 and 2) lays the groundwork for basic and clinical science. Phase Two (year 3) allows medical students to apply their patient care knowledge and skills to a variety of clinical settings. Phase Three (year 4) focuses on advanced clinical skills and preparation for residency.

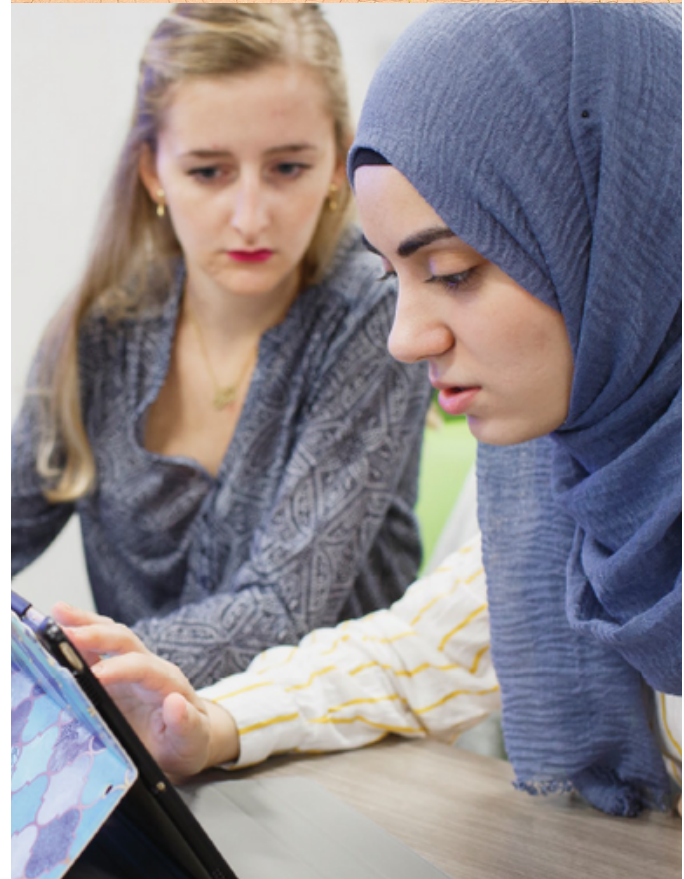
Phase 1

The 18-month "Foundations" phase includes basic and clinical science courses that integrate multiple disciplines. Medical students also spend time in non-traditional classroom settings working in teams to apply knowledge to clinical problems. This phase of the curriculum also includes multiple experiences in our state-of-the-art simulation center working with high-fidelity mannequins and standardized patients. The basic science content begins with an introduction to cells and tissues and then proceeds into organ-based blocks with a focus on normal processes. During the second year, medical students revisit the major organ systems with a focus on abnormal processes.

Lectures, conferences, laboratory, simulation and other team learning formats develop and extend the principles introduced in the case throughout the week.

A longitudinal practicum experience extends through the Foundations phase, and exposes medical students to patients in varied community settings. This course provides experiences in chronic care, service learning and inter-professional education and is combined with a social justice and health disparities curriculum.

During four 1-week blocks, medical students will be immersed in the "Frontiers" portion of the curriculum. This includes cutting-edge areas such as healthcare informatics, population health, quality and patient safety, healthcare economics, and principles of translational research.





DREXEL UNIVERSITY
College of
Medicine

CAMPUSES



- University City Campus
- Queen Lane Campus
- West Reading Campus
- Center City Campus

Drexel University College of Medicine
at Tower Health Campus Overview



Karen Restifo, MD, JD
*Regional Vice Dean
West Reading*



[CLICK HERE TO LEARN MORE](#)



PHASE 2

The one-year long "Applications" phase allows medical students to practice their patient care knowledge and skills in a variety of clinical settings. This year starts with participation in a two-week structured session, "Intersession I: Transition to the Clinical Years," which focuses on skills needed for medical students to function effectively on the wards.

During the third year, medical students rotate through clerkships in surgery, internal medicine, family medicine, pediatrics, psychiatry, neurology, ambulatory medicine and obstetrics and gynecology. To enhance the diversity of their clinical experience, medical students work with faculty members at multiple sites in metropolitan centers, working-class neighborhoods, suburbs, inner city areas and rural communities. All third-year clerkships take place on Drexel's academic campuses. Assignments for third year are based on the results of a lottery system, although medical students can elect year-long assignments at our regional campuses



PHASE 3

The "Transitions" phase focuses on advanced clinical skills and preparation for residency. The fourth year curriculum is structured within "Pathways" – an advising system that gives medical students a well-rounded educational experience and also prepares them for their chosen specialty area. All medical students have a faculty adviser who works with the student to balance the structure and flexibility of their learning needs, helps prepare the student to enter postgraduate training with confidence and works to maximize the guidance and counseling available from preceptors.

The advisers help medical students focus their preparation for graduate medical education and careers. The Pathway program also gives medical students experience in fields of interest other than the one that is likely to be their career path. Medical students take both required courses and electives in the Pathway system.



REGIONAL MEDICAL CAMPUS AFFILIATES



Allegheny Health Network
Pittsburgh/West Pennsylvania



Cape Fear Valley Health Network
Fayetteville, North Carolina



Crozer-Chester Medical Center
Upland, Delaware County, Pennsylvania



Kaiser Permanente - Bay Area
San Leandro, Alameda County, California



UPMC Harrisburg
Harrisburg/Central Pennsylvania



Tower Health - Reading Hospital
Reading, Berks County, Pennsylvania



WellSpan York Hospital
York, York County, Pennsylvania

AFFILIATED HOSPITALS/HEALTH SYSTEMS
PEDIATRIC TRAINING AT ST. CHRISTOPHER'S HOSPITAL FOR CHILDREN



St. Christopher's Hospital for Children

A PARTNERSHIP OF TOWER HEALTH AND DREXEL UNIVERSITY

Regional Medical Campuses have all the required 3rd and 4th year clerkships. The health organizations below offer medicine, family medicine, obstetrics and gynecology, neurology, pediatrics, psychiatry and surgery.

On December 15, 2019, Tower Health and Drexel University completed the acquisition of St. Christopher's Hospital for Children. The partnership between Tower Health and Drexel University ensures that St. Christopher's will remain a source of health and healing, medical education and research, and jobs and economic benefit for its Philadelphia neighborhood and the broader region just as it has for the last 144 years.

Introduction to the Drexel Regional Clinical Campus Model



Charles B. Cairns, M.D.

Walter H. and Leonore Annenberg Dean College of Medicine

Professor of Medicine and Emergency Medicine

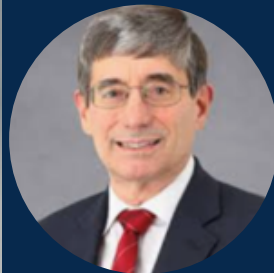
Senior Vice President, Medical Affairs



[CLICK HERE TO LEARN MORE](#)



Overview of Research at Drexel University College of Medicine



Kenny J. Simansky, PhD

Senior Vice Dean for Research

Professor of Pharmacology & Physiology



[CLICK HERE TO LEARN MORE](#)

[Download PowerPoint Presentation](#)

The Office of the Senior Vice Dean for Research serves to support clinical and basic research activities, works with departments and interdisciplinary programs to develop and implement research, facilitates translational research and promotes mentoring to advance the training of physicians/scientists.

SEARCH FACULTY BY RESEARCH

Last Name

Research Interests

Need More Options?
[Advanced Search](#)

SEARCH



DREXEL UNIVERSITY
Graduate School of
**Biomedical Sciences
and Professional Studies**
College of Medicine



The Graduate School of Biomedical Sciences and Professional Studies offers over 40 doctoral, master's and professional development programs. These academic programs emphasize real-world experience and help guide students to make career decisions that best fit their abilities and evolving needs.

Students are mentored by and work with world-renowned faculty members from the Graduate School and other Drexel colleges including Engineering, Arts and Sciences, Dornsife School of Public Health, Close School of Entrepreneurship, Thomas R. Kline School of Law, Westphal College of Media Arts and Design and LeBow College of Business. This innovative, multidisciplinary approach provides students with a career-focused learning experience and extensive training in their chosen fields.

Introduction to the Graduate School of Biomedical Sciences and Professional Studies



Elisabeth Van Bockstaele, PhD

Senior Vice President, Graduate and Online
Education Dean, Graduate School of Biomedical
Sciences and Professional Studies



[Click here to learn more](#)

COLLEGE OF MEDICINE BYLAWS

Standing Committees of the Faculty: *Committees with Department Level Elections*

- Advisory Council on Committees
- Steering Committee of the Faculty
- Bylaws Committee
- Finance, Planning and Development Committee

COM faculty-wide nominations and elections

- Committee for Diversity and Inclusive Excellence
- Continuing Medical Education Committee
- Education Coordinating Committee
- Faculty Appointments & Promotions Committee
- Mediation & Grievance Panel
- Medical Student Admissions Committee
- Sabbatical Committee
- Student Appeals Committee
- Student Evaluation and Promotion Committee
- Tenure Committee
- Women in Medicine and Science Committee

Introduction to Standing Committees of the Faculty



Michele Kutzler, PhD

*Associate Dean for Faculty
Professor of Medicine and Microbiology &
Immunology*



[CLICK HERE TO LEARN MORE](#)



DREXEL UNIVERSITY
College of
Medicine
Office of Faculty

2022-2023 Faculty Professional Development & Funding Opportunities

The Office of Faculty provides numerous professional development and funded opportunities each academic year. With most deadlines falling in the spring semester, here's a look ahead at the coming year.

Information and more details will be posted on the Office of Faculty website. If you have any questions, please feel free to contact us at COM.FAFD@drexel.edu.

For more information:



Caitlin Curcio, MS

Director of Faculty Affairs & Faculty Development

**PROFESSIONAL DEVELOPMENT
FUNDING OPPORTUNITIES**



November 2022

Faculty Launch- Applications due

November 2022

COMmon Grounds-*junior faculty*

February 6, 2023

New Faculty Orientation

February 2023

Professional Enrichment and Growth (PEG) Grant Applications due

March 2023

Mary DeWitt Pettit, MD Fellowship Applications due

March 2023

COMmon Grounds-*all faculty*

March-April 2023

Faculty Award Nominations

March-May 2023

COM Faculty Elections

June 2, 2023 (tentative)

Faculty Professional Development Day & Faculty Award Ceremony

Overview of DUCOM Appointments & Promotions Process



[CLICK HERE TO LEARN MORE](#)



Alison Carey, MD

*Associate Professor, Pediatrics and Microbiology
and Immunology*

Chair, Appointments & Promotions Committee

QUESTIONS ABOUT A&P? CONTACT THE OFFICE OF FACULTY



Kyong Park

Regional Campus and Affiliate Coordinator

Office of Faculty

COM.FAFD@drexel.edu

Additional Resources

- Appointments & Promotions website
- Assistant Professor Appointment Application for Clinical Campuses
- Clinical Faculty Appointment Guidelines for Qualified Ranks

**Workshops related to promotion
will be held in the next few months!**



FACULTY DATABASE

The screenshot shows the 'Personal Demographics' section of the Faculty Database. On the left is a navigation menu with categories like 'Faculty Search', 'Quick Reports', and 'Faculty Summary'. The main area contains a form with fields for 'Names', 'Name Pronunciation- Phonetic Spelling', 'Date of Birth', 'Gender', 'Pronouns', and 'Ethnicity'. A sidebar on the left lists various profile sections such as 'Personal Demographics', 'Addresses & Contacts', 'Administrative Teaching Roles', 'Checklist', 'KP Information', 'Faculty Classifications', 'Center/Institute', 'FTE Information', 'Mission Areas', 'Documentation', 'User IDs', 'Notes', 'Curriculum Vitae', and various training and certification options.

Benefits to Faculty

- Search for potential collaborators across DUCOM
- Apply for a promotion electronically
- Complete an electronic Faculty Annual Review
- Access your CV in DUCOM format--
publications will automatically pull in!

Introduction to the Faculty Database System




Alli Cain

Assessment and Database Coordinator
Office of Faculty



[Click here to learn more](#)



ADDITIONAL RESOURCES

Office of Faculty

- [Advantages of a Faculty Appointment](#)
- [Non-Employee Associate Form](#)

Drexel Library

- [Health Sciences Library](#)

Clinical Education

- [Resources for Educators](#)
- [Faculty and Resident Portal](#)

DUCOM Communications

- [Marketing & Communications Overview](#)
- [Communications Playbook](#)





DREXEL UNIVERSITY

College of
Medicine

Office of Faculty



Nancy Spector, MD
Senior Vice Dean of Faculty



Michele Kutzler, PhD
Associate Dean of Faculty



Donna McNelis, PhD
Associate Dean for Professionalism
and Continuing Education



Tamar Simpson, MBA
Office of Faculty Administrator



Caitlin Curcio, MS
Director of Faculty Affairs &
Faculty Development



Arlene Padolina
Executive Assistant



Alli Cain
Database and Program
Assessment Coordinator



Kyong Park
Regional Campus and Affiliate
Coordinator



COM.FAFD@drexel.edu



267-359-2389



drexel.edu/medicine/faculty-and-staff/office-of-faculty/