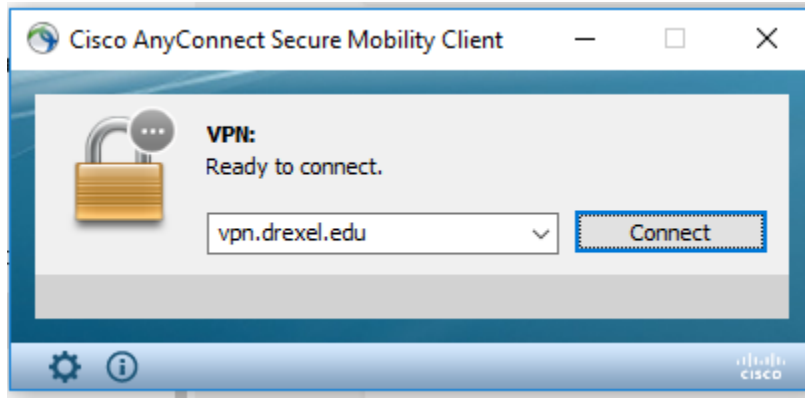


CONNECTING TO DREXEL VPN

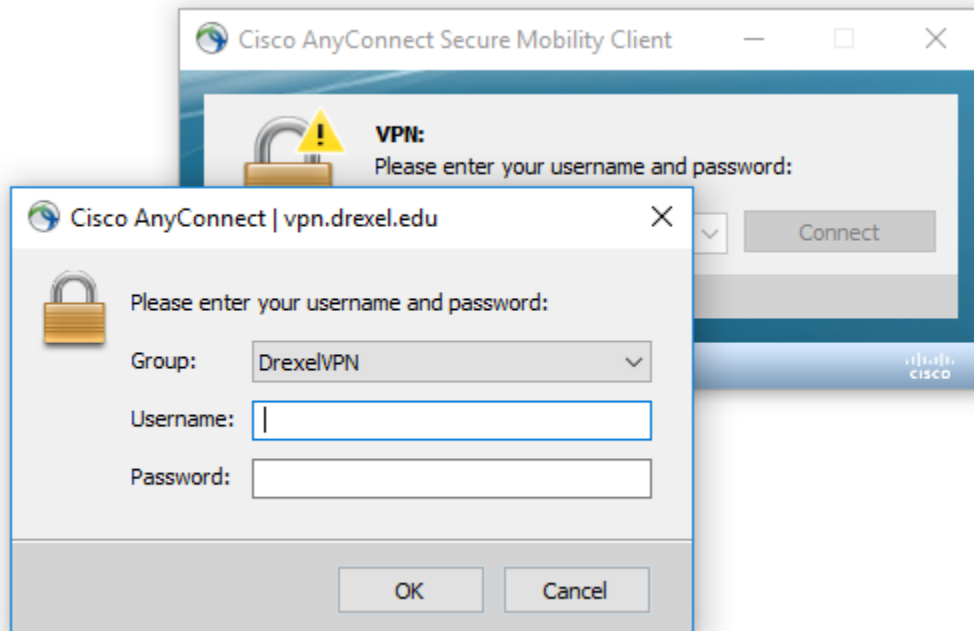
FOR WINDOWS PC USERS:

CONNECTING WITH MICROSOFT AUTHENTICATOR OR PHONE CALL

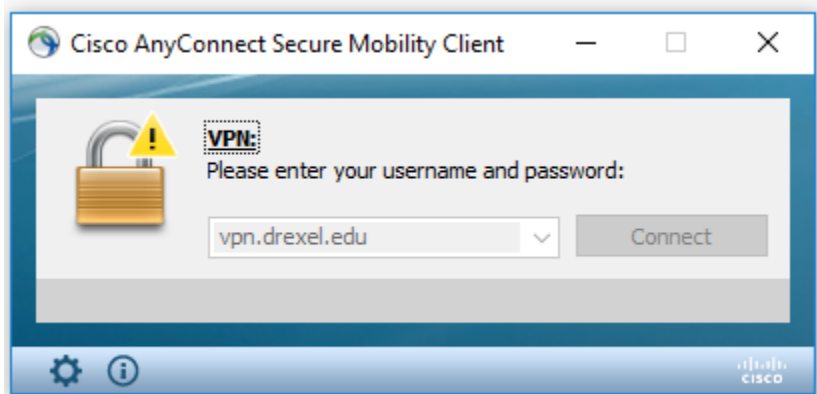
1. Open Cisco AnyConnect and confirm that your VPN server address is set to vpn.drexel.edu



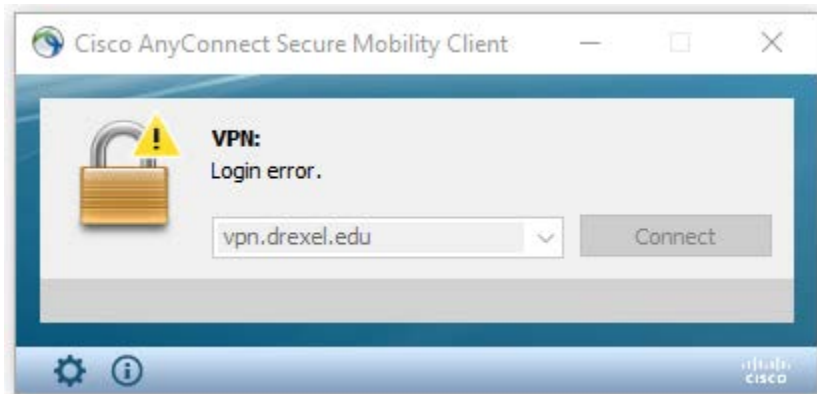
2. Select, "Connect" to log in and enter your Drexel credentials (abc123 format).



3. If you have configured your Microsoft Authenticator App to send an approval notification or to call you to approve sign-in, you should see the login box disappear, but the connection box will remain greyed out; waiting for you to approve or receive the phone call.



4. If you fail to approve or deny the login request, you will see the following, and the login credential box will reappear for another attempt.

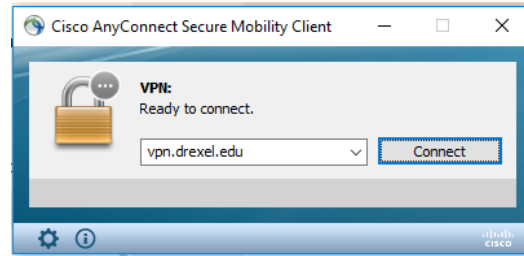


5. If your authentication was successful, the Cisco AnyConnect client will proceed with the connection.

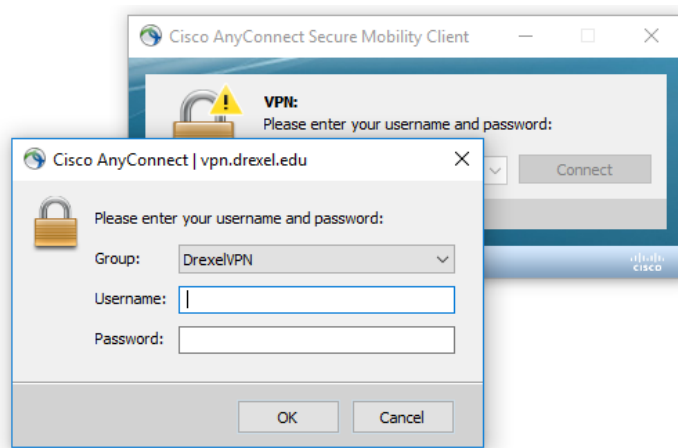


CONNECTING WITH AUTHENTICATION CODE

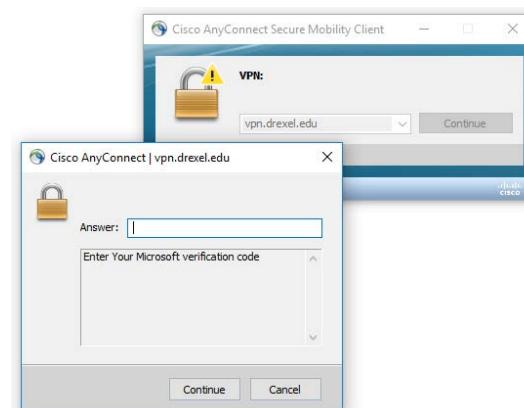
1. Open Cisco AnyConnect and confirm that your VPN server address is set to vpn.drexel.edu



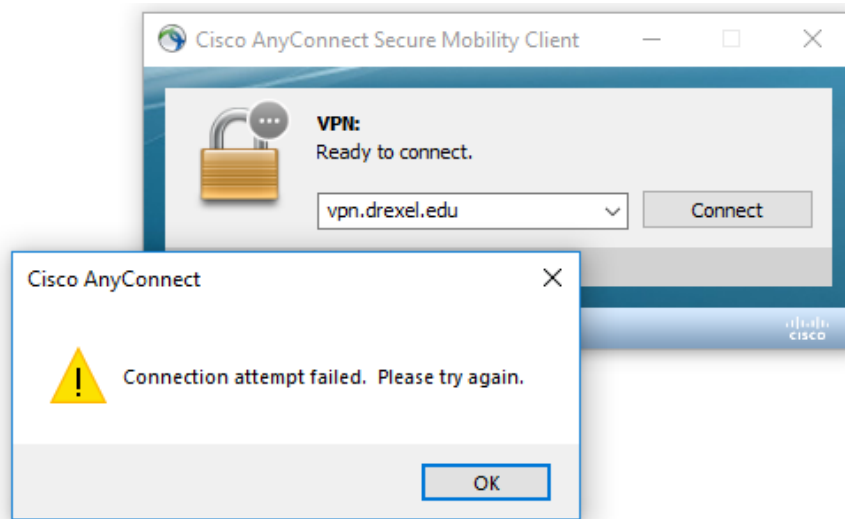
2. Select, "Connect" to log in and enter your Drexel credentials (abc123 format).



3. If your account is set up to use a six-digit authentication code when you sign in, you will see a box appear asking you to "Enter Your Microsoft Verification code".



- If you fail to enter the code or too much time elapses during code entry, you will see the following; then, the login credential box will reappear for another attempt.



- If your authentication was successful, the Cisco AnyConnect client will proceed with the connection.

