

CENTER FOR FAMILY INTERVENTION SCIENCE

College of Nursing and Health Professions
Drexel University



Annual Report

2017-2018 Academic Year

Sept. 01, 2017 – Aug. 30, 2018

TABLE OF CONTENTS

A LETTER FROM THE DIRECTOR	3
AN INTRODUCTION TO THE CENTER	4
WHAT IS FAMILY INTERVENTION SCIENCE?	4
OUR MISSION	4
WHO WE ARE.....	4
WHAT WE DO.....	4
WELCOME NEW MEMBERS	6
SPEAKER SERIES.....	7
PROMISE ZONE	8
ATTACHMENT-BASED FAMILY THERAPY TRAINING PROGRAM	9
FAMILY INTERVENTION RESEARCH	10
DREXEL AREAS OF RESEARCH EXCELLENCE (DARE).....	10
ASSISTANT PROFESSOR PROFESSIONAL AND RESEARCH DEVELOPMENT	10
FAMILY INTERVENTION GRANT SUBMISSIONS AND FUNDING.....	11
PARTNERSHIPS AND CONNECTIONS	13
FAMILY INTERVENTION RESEARCH PUBLICATIONS	14
CENTER INITIATIVES FOR NEXT YEAR.....	18
CENTER INFRASTRUCTURE DEVELOPMENT.....	18
RESEARCH	18
EDUCATION	18
PRACTICE	18
CENTER DIRECTORY	19

A LETTER FROM THE DIRECTOR

REFLECTIONS ON OUR FIRST YEAR

In the summer of 2017, the Center for Family Intervention Science received its formal designation in the College of Nursing and Health Professions at Drexel University. A small group of faculty helped conceptualize the Center's vision, which recognizes the importance of a family-centered perspective to service, education, and research development, implementation and dissemination. Through much hard work, I am proud to say much of this vision for the launch of the Center has been realized.

Dr. Lisa Chiarello from Physical Therapy and Rehabilitation Sciences has been instrumental in her role as Associate Director, focusing on the development of Center infrastructure and research proposals. Dr. Laura N. Gitlin, our new Dean of the College of Nursing and Health Professions, has injected family-centered expertise and philosophy into our College's research, education and service initiatives. And lastly, nothing would have moved forward without the initiative and diligence of Cameron McConkey.

With all this support, we have several accomplishments to look back on from this year that are reviewed in this report. The Center achieved its two primary objectives for its first year: building infrastructure to support research, education, and service activities through the development of policies and procedures, recruitment of new members, sponsorship of a student internship, and expansion of web and social media presence; and establishing new partnerships and collaborations both within and external to the Drexel University community.

Three important programs should be highlighted:

1. We initiated a web-based Speaker Series where five different faculty gave short lectures on family-centered treatment research and care within their specialty areas. We archived all the talks on our new YouTube station and website.
2. We wrote a research proposal in response to an internal University grant announcement. This project would support Center infrastructure and four pilot studies. The grant planning process galvanized the team and many of its ideas and goals.
3. We started a strong collaboration with the West Philadelphia Promise Zone and Promise Neighborhood projects. Both these project will set the stage for future research collaborations.

These projects and others have helped consolidate the goals and mission of our first year as a Center. The table is now set for many new projects and expansion of faculty membership. I look forward to developing more collaborations between faculty, providers and community members and launching some new family-centered treatment research. I welcome your input, participation, and enthusiasm.

Sincerely,



Guy Diamond, PhD
Director, Center for Family Intervention Science



AN INTRODUCTION TO THE CENTER

WHAT IS FAMILY INTERVENTION SCIENCE?

In the broadest sense, our science focuses on understanding how family members and caregivers can contribute to the health and wellbeing of patients. The term “caregiver” refers to any appropriate person that has primary responsibility for supporting and providing care for someone. Interventions with families and caregivers can focus on the caregiver-patient-provider relationship, the caregiver-patient relationship, and/or the wellbeing of the caregiver(s) themselves.

OUR MISSION

The mission of the Center for Family Intervention Science at Drexel University is to study and disseminate family-centered care models that promote strengths, resources, and community engagement, particularly for vulnerable or marginalized families. We aim to improve the well-being of children and adults with medical, developmental or behavioral health conditions through interprofessional research, education, and practice.

WHO WE ARE

Members of the Center consist of a diverse group of professionals, including research scientists, educators, and practitioners at Drexel University, as well as collaborating service providers and organizations from the City of Philadelphia and around the world. Drexel faculty represent a wide range of disciplines including:

- Counseling & Family Therapy
- Health Systems & Sciences Research
- Nursing
- Nutrition
- Physical Therapy & Rehabilitation Sciences
- Psychology

Our interprofessional collaborations provide a rich and creative context for promoting family-centered care interventions across the life span. Funding for research, educational, and clinical programs has come from federal, state and private foundation sponsors.

WHAT WE DO

Our family intervention approaches take many forms, including:

- Prevention and Health Promotion
- Family and Community Engagement
- Collaborative and Integrated Care
- Intervention Development, Implementation and Dissemination

We recognize that family development and growth takes place in the context of social and environmental determinants of health. These contexts might include race, ethnicity, gender, sexuality, accessibility, transportation, socioeconomic status, education, immigration status, and neighborhood

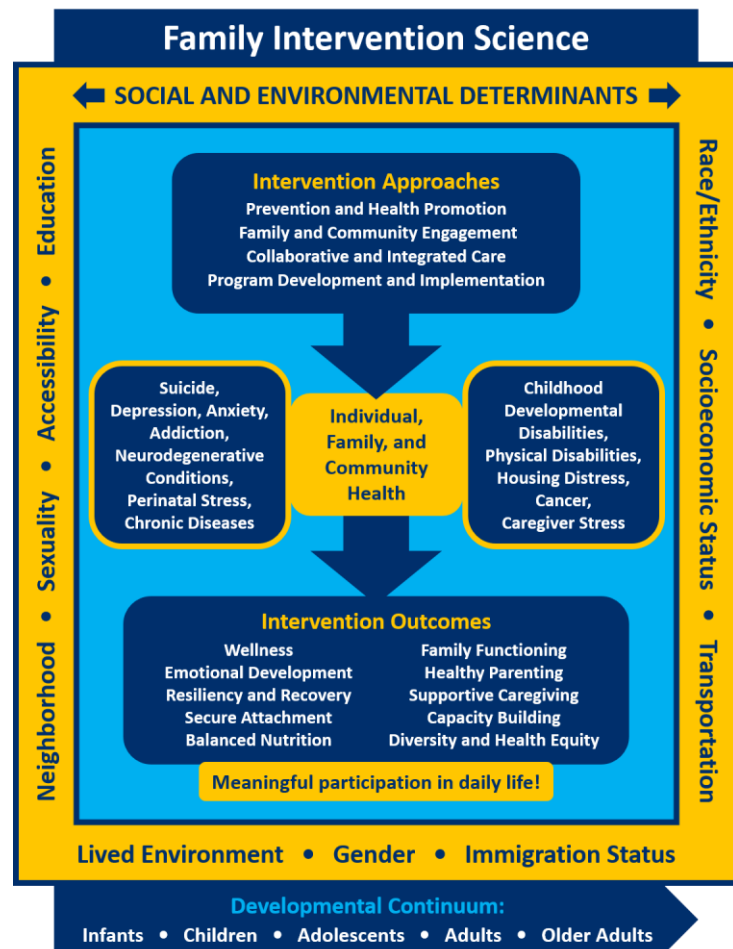
and lived environment. Attention to these contexts becomes central to our theories, clinical work, and research design, implementation and interpretation.

Projects in the Center promote behavioral and physical health and wellness with an appreciation for the interplay between the two domains. Collectively, our programs and research initiatives address:

- Suicide, Depression, Anxiety
- Addiction
- Neurodegenerative Conditions
- Perinatal Stress
- Chronic Diseases
- Childhood Developmental Disabilities
- Physical Disabilities
- Housing Distress
- Cancer
- Caregiver Stress

Our programs aim to increase meaningful family involvement in daily life through outcomes of:

- Wellness
- Emotional Development
- Resiliency and Recovery
- Secure Attachment
- Balanced Nutrition
- Family Functioning
- Healthy Parenting
- Supportive Caregiving
- Capacity Building
- Diversity and Health Equity



The Center is committed to working with diverse populations of families throughout the life span in both University and Community settings, including behavioral health clinics, primary care offices, hospitals, emergency rooms, pediatric rehabilitation clinics, schools, homes, and neighborhoods.

WELCOME NEW MEMBERS

This year, the Center added two new Core Faculty members and brought on a new Research Operations Manager. In the coming year, we anticipate adding a number of new faculty, particularly new collaborators in Drexel University's College of Medicine (DUCOM).

BRANDY-JOE MILLIRON, PHD

Dr. Milliron, Assistant Professor of Nutritional Sciences, joined the Center as a Core Faculty member in July 2018. She is interested in working with Center faculty to incorporate caregiving and behavioral health research strategies into her work with individuals with cancer and their families. Dr. Milliron also serves on the College's Board of Diversity, Equity and Inclusion and serves as CNHP's representative on Drexel's Committee on University-Community Partnerships.



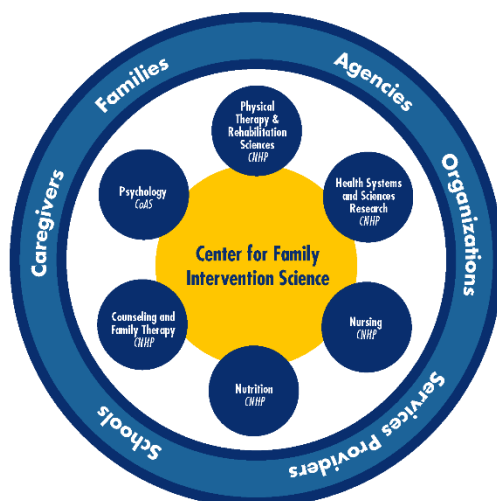
JOAN BLOCH, PHD, CRNP, FAAN

Dr. Bloch, Associate Professor of Nursing, joined the Center as a Core Faculty member in July 2018. She brings an expertise in global and maternal and child health, and is interested in working with Center faculty in implementation science initiatives to improve birth outcomes, women's health and urban health care systems. Dr. Bloch has a strong community and health system network, which will be vital to future programming and research.



CAMERON MCCONKEY

Cameron McConkey joined the Center in September 2017 as the Research Operations Manager. Cameron is also an Executive MPH student in the Dornsife School of Public Health. Since joining the Center, Cameron has been involved in a number of LGBTQ-based initiatives, including a grant submission to the Philadelphia Department of Public Health and programming through the College's Board of Diversity, Equity and Inclusion.



INTERESTED IN JOINING THE CENTER?

Contact the Director, Guy Diamond, for more information about ways to get involved!

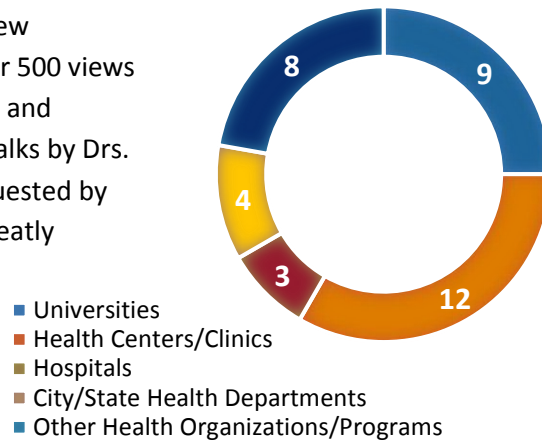
(215) 571-3420 | gd342@drexel.edu

SPEAKER SERIES

As part of our first year objectives, we launched a web-based and in-person speaker series to provide a platform for Center faculty to discuss themes of family intervention science across disciplines. Starting in February 2018, we hosted and archived five 40-minute talks, ranging in topic from community engagement to maternal and perinatal health.

Overall, our inaugural speaker series added over 100 new subscribers to our Center mailing list, currently has over 500 views on YouTube, and reached a diverse panel of healthcare and education systems (see graphic to the right). Of note, talks by Drs. Jaime Slaughter-Acey and Lisa Chiarello were both requested by Universities for inclusion with curriculum, which will greatly enhance visibility of our Center's work, particularly in intersectional perinatal health and pediatric family engagement.

If you would like to incorporate talks into curriculum or programing, please contact the Center Director, Guy Diamond at gd342@drexel.edu, and we can arrange for a sharing of the material and a connection to the faculty speaker for follow-up dialogue and questions.



ACADEMIC YEAR 2017-18

Access to our Speaker Series archived videos can be found on our website: www.drexel.edu/familyintervention

- | | |
|------------------------------|--|
| • Dr. Loretta Sweet-Jemmott: | "Building Health Communities Together" |
| • Dr. Jaime Slaughter-Acey: | "Intersectionality and Perinatal Health" |
| • Dr. Guy Diamond: | "Family Engagement for Youth Suicide" |
| • Dr. Lisa Chiarello: | "Family-Centered Care and Engagement" |
| • Dr. Bobbie Posmontier: | "Mother Baby Connections" |

ACADEMIC YEAR 2018-19

In the 2018-19 academic year, we plan to host six talks, opening in October with a lecture from the Dean of the College of Nursing and Health Professions, Dr. Laura N. Gitlin. Please save the date and be on the lookout for additional information about speakers and registration!

- | | |
|-----------------------------|---------------------|
| • October 25 th | Dr. Laura N. Gitlin |
| • November 15 th | Dr. Robert Palisano |

Additional dates in 2019: January 24th, February 28th, April 25th, and May 27th

Lectures are held on the fourth Thursday of the month from 12:00-1:00PM. Zoom links for live web-based attendance are provided upon registration. Lunch is provided!

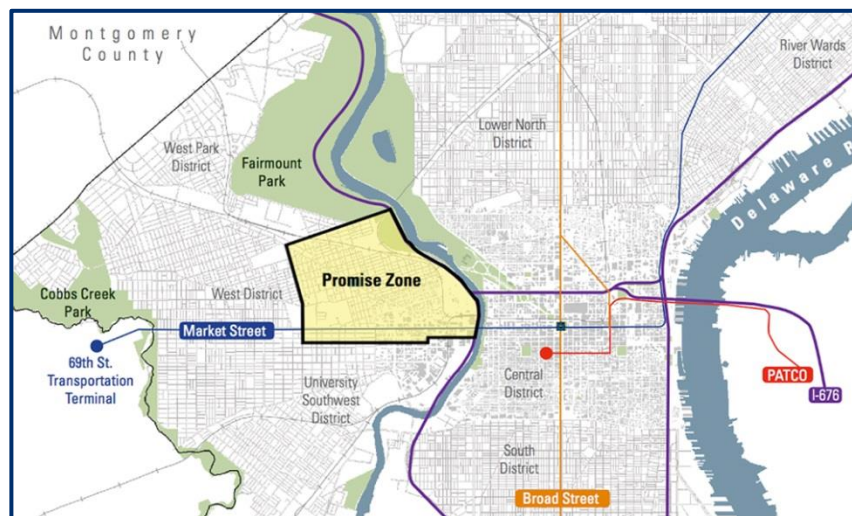
PROMISE ZONE

This year has brought the Center for Family Intervention Science and the West Philadelphia Promise Zone and Promise Neighborhood together in some exciting and meaningful partnerships. We are grateful to the City of Philadelphia’s Director of Place-Based Initiatives, Samantha Porter, for her diligence, commitment and support; without her and her team, much of this work would not be possible.

WHAT IS THE PROMISE ZONE AND NEIGHBORHOOD?

The **Promise Zone** is a federal designation that supports collaboration and integration of services with identified community needs for all ages. The Promise Zone aims to reduce poverty, increase health and wellness, support public safety, improve education, preserve quality affordable housing, and bring greater opportunity for

people living in the Promise Zone. The area of the West Philadelphia Promise Zone is roughly two square miles – bounded by the Schuylkill River to the east, Girard Avenue to the north, 48th Street to the west, and Sansom Street to the south. The West Philadelphia Promise Zone is now one of twenty-two Promise Zones that serve urban, rural, and tribal areas across the country.



Adapted from *The Triangle*

The **Promise Neighborhood** is a federally-funded grant from the Department of Education to accomplish similar goals in the West Philadelphia community, with a particular focus on educational readiness and innovative school-based programming.

PROMISE ZONE BEHAVIORAL HEALTH COMMITTEE

Earlier in 2018, Dr. Guy Diamond, Director of the Center for Family Intervention Science, became co-chair of a joint Behavioral Health Committee for both the Promise Zone and Neighborhood. This committee brings together academics, providers, and community members to collectively solve some of the health disparities in these neighborhoods. The committee met four times this academic year and brought together over 50 stakeholders. In early meetings, the group put together a **Behavioral Health Asset Map**, which will inform future activities of the group and be shared with the community.

ATTACHMENT-BASED FAMILY THERAPY TRAINING PROGRAM

The ABFT Training Program at the Center for Family Intervention Science has had a productive academic year in terms of training and supervision. We have conducted 25 workshops for a total of 52 days of trainings. In the United States, we held workshops in 7 states and 15 cities including 2 workshops in Philadelphia. Internationally, we conducted workshops in 6 countries and 9 cities. We have also conducted over 26 different supervision groups (minimum 11 sessions each). In all this year, we have trained over 700 therapists and frontline mental health professionals.

BELGIUM TRAINING CENTER

In October 2017, the first ABFT international training program at KU Leuven University in Leuven Belgium welcomed its first class of 21 students. The Belgium training team was trained by the ABFT Training Program to run this program. They have just completed their first year of training and look forward to welcoming a second class in October 2018.

ABFT IN RESIDENTIAL AND INTENSIVE OUTPATIENT SETTINGS

The ABFT Training Program continues to expand the ways in which ABFT is utilized. In July of 2018, we secured a training contract with Newport Academy to make ABFT the organizing treatment throughout their residential and intensive outpatient (IOP) treatment programs. This will be the first time that ABFT is systematically utilized within residential and IOP settings. Not only will all family therapists utilize ABFT as their family therapy modality, but the organization is adopting ABFT as their milieu framework. Over the next year, we will be working with Newport Academy to implement ABFT principles into their intake procedures, parent orientation program, group therapy, and milieu environment. We have already conducted 2, 3-day introductory ABFT workshops and are under contract to conduct 5 supervision groups and 2, 3-day advanced workshops with them.

NEW PRODUCT LINES

The ABFT Training Program continues to expand our product line. We have conducted several ABFT webinars this year, both 1-day and 3-part webinar series. We are also developing a college program to be utilized within psychology and couples and family therapy masters and doctoral programs. Four university programs have already committed to utilizing this program beginning summer 2019. Finally, this year we partnered with Center for Adolescent Substance Use (CASA) to produce 20 therapy training videos. The partnership with CASA has allowed us to hire actors and produce the therapy videos. CASA will use these videos in a research study. We will use the videos in online trainings and as an additional resource to clinicians that have attended our in-person trainings.

For more information about ABFT workshops and events, please visit www.drexel.edu/abft or contact the ABFT Clinical Training Director, Dr. Suzanne Levy, at sal89@drexel.edu.



FAMILY INTERVENTION RESEARCH

DREXEL AREAS OF RESEARCH EXCELLENCE (DARE)

This year, the Center for Family Intervention Science submitted a DARE proposal titled, “**Families FIRST: Family Interprofessional Research and Service Team**”. This proposal includes four pilot studies, each led by members of the Center, to advance three areas of family intervention research with marginalized populations (i.e., women experiencing postpartum depression, homelessness, and substance use), as well as family-centered experiential learning in the College of Nursing and Health Professions. The proposal brought together twenty investigators across four Drexel Colleges and three outside universities and organizations. Overall, the proposal would support funding for:

- CNHP Staff: \$86,242
- CNHP Students: \$36,683

Funding decisions will be made in mid- to late-September, but some program initiatives are already underway, including a robust partnership with the West Philadelphia Promise Zone. One of the aims of this proposal is to build infrastructure and partnerships for dissemination of CNHP science and services with the West Philadelphia community. While we hope to hear good news about funding, the grant planning process galvanized the team and many of its ideas and goals; we plan to seek additional funding mechanisms for all of the proposed studies and community partnerships outlined in our DARE submission.

ASSISTANT PROFESSOR PROFESSIONAL AND RESEARCH DEVELOPMENT

In September 2017, we offered Assistant Professors in the Center \$750 for professional development, which we plan to continue as an annual program. We see the professional development of early investigators and their students as a critical component of supporting the advancement of family intervention research programs at Drexel. Although not limited to these opportunities, we encouraged faculty to use these funds to supplement costs, such as conference registrations and travel, books, application/publication fees, student support, etc. Highlighted below are a few case examples.

Dr. Stephanie Krauthamer-Ewing Sends Ph.D. Student to Conference

In the spring of 2018, Dr. Stephanie Krauthamer-Ewing sent her doctoral student and graduate research assistant, Katherine Dilks (Counseling and Family Therapy), to the Society for Prevention Research’s 26th annual conference in Washington D.C. Katherine was selected to present a poster titled, “Moderators of Role-Confusion in Depressed Mothers and Their Children in a Low-Income Minority Sample”. The Center covered her travel, registration and lodging to promote her development as a young scientist.

Dr. Jess Chou Supplements Cost of Advanced Statistics Course

The Center was also happy to support the continuing education of Dr. Jessica Chou, who used her professional development funds to take a multilevel and mixed models programming course in July 2018. Dr. Chou will use the training to support her program development and evaluation in the field of substance use disorder for women and their families.

FAMILY INTERVENTION GRANT SUBMISSIONS AND FUNDING

The following section highlights a number of grant submissions across Center membership, excluding the submission of our DARE proposal, which is outlined above. Center-associated faculty and directors, as well as their role on project, are listed in **bold**.

Funded

Chiarello, L. (Co-PI), Palisano, R. (Co-PI). (2017-18). Preparing Children with Cerebral Palsy for Successful Community Participation: A Pilot Study on the Feasibility and Effectiveness of Participation-based Outpatient Tele-Rehabilitation. *CanChild Centre for Childhood Disability Research*.

Total award: \$10,000CA

Milliron, B. (Co-I). (2018-19). Immunization and Factors Influencing Vaccine Hesitancy in Tajikistan. *United Nations Children's Fund (UNICEF)*.

Total award: \$146,441USD

Milliron, B. (PI). (2018-19). Optimizing healthful nutrition of cancer caregivers and survivors. *Sidney Kimmel Cancer Center*.

Total award: \$25,000USD

Slaughter-Acey, J. (PI). (2018-20). Shades of Color: The impact of skin tone on African American women and their birth outcomes. *Russel Sage Foundation*.

Total award: \$6,496USD

Slaughter-Acey, J. (PI). (2018). A Preliminary Investigation into Color Inequalities: The relationship between shades of skin color and birth outcomes in African American women. *Drexel University Summer Research Award*.

Total award: \$35,000

Under Review

Jeffries, L., Effgen, S., McCoy, S., **Chiarello, L. (Co-PI)**, Fiss, A. (2019-23). Preparing Students with Physical Disabilities for Transition: Relationship of School-Based Physical Therapy Services to Student Outcomes. *Institute of Education Sciences*

Total requested: \$1,400,000USD

Krauthamer-Ewing, S. (PI). (2019-21). The Role of Reflective Functioning in Recovery for Teens At Risk for Suicide. *National Institutes of Mental Health*.

Total requested: \$154,261USD

CNHP – Dean's Relevant Rapid Response Grant

1. **Chou, J. (PI)**, Lynch, L., **Krauthamer-Ewing, S. (Co-I)**, Wilkins, E. (2018-19) Exploration of the Person of the Therapist (POTT) Model.
Total requested: \$5,000USD
2. **Posmontier, B. (PI)**, **Chiarello, L. (Co-I)**, Nasser, J., **Geller, P. (Co-I)**, Horowitz, J. (2018-19). Cortical Hemodynamic Response among Infants of Mothers With and Without Postpartum Depression.
Total requested: \$7,000USD

Not Funded

Diamond, G. (PI), McConkey, C. (Project Manager). (2018-21). Dragon Strong: A Comprehensive Suicide Prevention Program for the Drexel University Community. *Substance Abuse and Mental Health Services Administration (SAMHSA)*.

Total request: \$295,320USD

Diamond, G. (PI). (2018-20). Attachment-Based Family Therapy (ABFT) for Adolescent Bulimia Nervosa: A Treatment Development Study. *National Eating Disorder Association*.

Total request: \$100,00USD

Diamond, G. (Distinguished Investigator). (2018-19). Attachment based family therapy for college students struggling with suicidal thoughts and behaviors. *American Foundation for Suicide Prevention*.

Total request: \$123,958USD

McConkey, C. (Project Coordinator). (2018). Families as “Little Communities”: Building Resources and Capacity for Trans and Gender Nonconforming Parents. *Philadelphia Department of Public Health*.

Total request: \$6,991USD

Mensing, J., **Diamond, G. (Co-I)**, Peebles, R., Bellamy, S., Gallop, R. (2018-22). Body Trust® Wellness versus Cognitive Behavioral Therapy: A non-inferiority trial of two internet-based guided self-help programs for binge eating. *Department of Defense*.

Total requested: \$6,099,709USD

Slaughter-Acey, J. (Co-PI), Krauthamer-Ewing, S. (Co-PI), Bloch, J. (Co-I), Sheller, S., Hudson, K. (2018-19). Developing and Piloting the Family Care Curriculum: Parenting in the Context of Race, Class, and Homelessness. *Urban Health Collaborative*.

Total requested: \$35,000USD

CNHP Internal Grants - \$25,000USD

1. **Posmontier, B. (PI), Chiarello, L. (Co-I).** (2018-19). Cortical hemodynamic response among infants of mothers with and without postpartum depression.
2. **Chou, J. (PI)**, Cooper-Sadlo, S., Mancini, M. (2018-19). Exploration of Intergenerational Transmission of Substance Use.
3. **Slaughter-Acey, J. (Co-PI), Krauthamer-Ewing, S. (Co-PI), Bloch, J. (Co-I)**, Sheller, S., Hudson, K. (2018-19). Developing and Piloting the Family Care Curriculum: Parenting in the Context of Race, Class, and Homelessness.

PARTNERSHIPS AND CONNECTIONS

The following section highlights some of the ways in which the Center for Family Intervention Science has connected members of the Center to Drexel University partners, as well as community based organizations. Our collective network, across disciplines, is vital to the development and implementation of family-based solutions to complex health problems.

Internal

New to the College of Nursing and Health Professions, Dr. Jessica Chou brings an exciting family focus to the area of substance use disorder treatment program development, implementation and evaluation. Through initial meetings coordinated by the Center's Director, Dr. Guy Diamond, Dr. Chou was quickly able to network with two investigators in Drexel University's College of Medicine Department of Psychiatry: Drs. David Bennett and Barbara Schindler.



This initial partnership has been incredibly fruitful. Dr. Chou is now an active collaborator of the Caring Together Program, initially established in 1991 by Dr. Schindler, which helps women and their children overcome substance abuse and start a new life without drugs and alcohol. The program utilizes a multi-phase, multi-disciplinary approach to treat the addiction and any other issues which may have caused or resulted from using.

Drs. Bennett, Chou, and Schindler worked as co-investigators to develop a pilot study for the Center's Families FIRST proposal and the Center is now considering membership for both Drs. Bennett and Schindler to continue their collaboration with the Center for Family Intervention Science.

External

We developed over twenty new partnerships with community-based organizations this year to support the research agenda of faculty and program directors of the Center. These organizations span past the City of Philadelphia into the tristate area and beyond, including New York, Washington D.C. and California.

Our network of community-based organizations include—early intervention programs for young children and their families, outpatient pediatric rehabilitation sites, hospital systems, intensive outpatient and hospital step down programs, nutrition and food security service agencies, and more.

These partnerships will assist to promote the visibility of the Center, expand the Center's research and service referral network, and set forth opportunities for future implementation and dissemination science projects.

FAMILY INTERVENTION RESEARCH PUBLICATIONS

The following section highlights the breadth of family-centered intervention and engagement publications across the departments and faculty that comprise the Center for Family Intervention Science. Center-associated faculty and directors are listed in **bold**. Publications are listed in alphabetical order by last name of first author.

Alghamdi, M., **Chiarello, L., Palisano, R.,** McCoy, S. (2017). Understanding participation of children with cerebral palsy in family and recreational activities. *Research in Developmental Disabilities*.

Almasri, N., AN, M., **Palisano, R.** (2018). Parents' Perception of Receiving Family-Centered Care for Their Children with Physical Disabilities: A Meta-Analysis. *Physical and Occupational Therapy in Pediatrics*.

An, M., **Palisano, R.,** Yi, C., **Chiarello, L.,** Dunst, C., Gracely, E. (2017). Effects of a Collaborative Intervention Process on Parent Empowerment and Child Performance: A Randomized Controlled Trial. *Physical and Occupational Therapy in Pediatrics*.

An, M., **Palisano, R.,** Yi, C., **Chiarello, L.,** Dunst, C., Gracely, E. (2018). Effects of a Collaborative Intervention Process on Parent-Therapist Interaction: A Randomized Controlled Trial. *Physical and Occupational Therapy in Pediatrics*.

Aravena, J., Albala, C., **Gitlin, L.** (2018). Measuring change in perceived well-being of family caregivers: validation of the Spanish version of the Perceived Change Index (PCI-S) in Chilean dementia caregivers. *International Journal of Geriatric Psychiatry*.

Armstrong, N., **Gitlin, L.,** Parisi, J., Roth, D., Gross, A. (2018) Association of physical functioning of persons with dementia with caregiver burden and depression in dementia caregivers: an integrative data analysis. *Aging Mental Health*.

Arthur, P., **Gitlin, L.,** Kairalla, J., Mann, W. (2017). Relationship between the number of behavioral symptoms in dementia and caregiver distress: what is the tipping point? *International Psychogeriatrics*.

Bartlett, D., McCoy, S., **Chiarello, L.,** Avery, L., Galuppi, B. (2018). A collaborative approach to decision making through developmental monitoring to provide individualized services for children with cerebral palsy. *Physical Therapy*, Early online.

Bloch, J., Cordivano, S., Gardner M., Barkin, J. (2018). Beyond bus fare: deconstructing prenatal care travel among low-income urban mothers through a mix methods GIS study. *Contemporary Nursing*.

Brawner, B., **Jemmott, L.,** Wingood, G., Reason, J., Mack, N. (2018). HIV/STI Prevention Among Heterosexually Active Black Adolescents With Mental Illnesses: Focus Group Findings for Intervention Development. *Journal of the Association of Nurses in AIDS Care*.

Chiarello, L., Bartlett, D., **Palisano, R.,** McCoy, S., Jeffries, L., Fiss, A., Wilk, P. (2018). Determinants of playfulness of young children with cerebral palsy. *Developmental Neurorehabilitation*.

Chou, J. & Diamond, R. A Multicultural Application of Attachment Theory with a Chinese Immigrant Family: Contextual and Developmental Adaptations. (2018). *In Race and Ethnicity: International Perspectives, Challenges and Issues of the 21st Century*.

Chou, J., Zand, D., Pierce, K., Pennington, L., Dickens, R., Michael, J. McNamara, D., White, T. (2018). Social Support, Family Empowerment, Substance Use, and Perceived Parenting Competency during Pregnancy for Women with Substance Use Disorders. *Substance Use and Misuse*.

Clemson, L., Laver, K., Jeon, Y., Comans, T., Scanlan, J., Rahja, M., Culph, J., Low, L., Day, S., Cations, M., Crotty, M., Kurrle, S., Piersol, C., **Gitlin, L.** (2018). Implementation of an evidence-based intervention to improve the wellbeing of people with dementia and their carers: study protocol for 'Care of People with dementia in their Environments (COPE)' in the Australian context. *BMC Geriatrics*.

De Olivia, A., Radanovic, M., Homem de Mello, P., Buchain, P., Dias Vizzotto, A., Harder, J., Stella, F., Piersol, C., **Gitlin, L.**, Forlenza, O. (2018). An intervention to reduce neuropsychiatric symptoms and caregiver burden in dementia: Preliminary results from a randomized trial of the tailored activity program-outpatient version. *International Journal of Geriatric Psychiatry*.

Gitlin, L., Arthur, P., Piersol, C., Hessels, V., Wu, S., Dai, Y., Mann, W. (2018). Targeting Behavioral Symptoms and Functional Decline in Dementia: A Randomized Clinical Trial. *Journal of the American Geriatrics Society*.

Gitlin, L., Kales, H., Marx, K., Stanislawski, B., Lyketos, C. (2017). A randomized trial of a web-based platform to help families manage dementia-related behavioral symptoms: The WeCareAdvisor™. *Contemporary Clinical Trials*.

Giurgescu, C., Fahmy, L., **Slaughter-Acey, J.**, Nowak, A., Caldwell, C., Misra, D. (2018). Can support from the father of the baby buffer the adverse effects of depressive symptoms on risk of preterm birth in Black families? *AIMS Public Health*.

Hansen, B., Hodgson, N., Budhathoki, C., **Gitlin, L.** (2018). Caregiver Reactions to Aggressive Behaviors in Persons With Dementia in a Diverse, Community-Dwelling Sample. *Journal of Applied Gerontology*.

Hansen, B., Hodgson, N., **Gitlin, L.** (2018). African-American caregivers' perspectives on aggressive behaviors in dementia. *Dementia (London)*.

Ibrahim, M., Jin, B., Russon, J., **Diamond, G.**, Kobak, R. (2018) Predicting Alliance for Depressed and Suicidal Adolescents: The Role of Perceived Attachment to Mothers. *Evidence-Based Practice in Child and Adolescent Mental Health*.

Ibrahim, M; Russon, J., **Levy, S., Diamond, G.** (2018). Promoting parental acceptance of bisexuality: A case study of attachment-based family therapy. *Journal of Family Psychotherapy*.

Ibrahim, M., Russon, J. & **Diamond, G.** (2017). Attachment-based family therapy for depressed and suicidal adolescents: Development, research and clinical practice. *Handbook of Suicidal Behaviour*.

Ibrahim, M., Russon, J., **Levy, S., & Diamond, G.** (2018). Promoting parental acceptance of bisexuality: A case study of attachment-based family therapy. *Journal of Family Psychotherapy*.

Kales, H., **Gitlin, L.**, Stanislawski, B., Myra Kim, H., Marx, K., Turnwald, M., Chiang, C., Lyketsos, C. (2018). Effect of the WeCareAdvisor™ on family caregiver outcomes in dementia: a pilot randomized controlled trial. *BMC Geriatrics*.

King, G., Schwellnus, H., Keenan, S., **Chiarello, L.** (2018). Youth engagement in pediatric rehabilitation: Service providers' perceptions in a real-time study of solution-focused coaching for participation goals. *Physical and Occupational Therapy in Pediatrics*, Early Online.

- King, G., **Chiarello, L.**, Thompson, L., McLarnon, M., Smart, E., Ziviani, J., Pinto, M.. (2017). Development of an observational measure of therapy engagement for pediatric rehabilitation. *Disability and Rehabilitation*, Early online.
- Momplaisir, F., Aaron, E., Bosset, L., Anderson, E., Tatahmentan, M., Okafor V., Kemembin, A., **Geller, P.**, Jemmott, J., Brady, K. (2018). HIV care continuum outcomes of pregnant women living with HIV with and without depression. *AIDS Care*.
- Nitor, J., **Slaughter-Acey, J.**, Giurgescu, C., Misra, D. (2018). Symptoms of Depression and Preterm Birth Among Black Women. *The American Journal of Maternal/Child Nursing*.
- Novelli, M., Machado, S., Lima, G., Cantatore, L., Sena, B., Rodrigues, R., Rodrigues, C., Canon, M., Piersol, C., Nitrini, R., Yassuda, M., **Gitlin, L.** (2018). Effects of the Tailored Activity Program in Brazil (TAP-BR) for Persons With Dementia: A Randomized Pilot Trial. *Alzheimer Disease & Associated Disorders*.
- Petroka, K., Campbell-Bussiere, R., Dychtwald, D., **Milliron, BJ.** (2017). Barriers and facilitators to healthy eating and disease self-management among older adults residing in subsidized housing. *Nutrition and Health*.
- Polenick, C., Struble, L., Stanislawski, B., Turnwald, M., Broderick, B., **Gitlin, L.**, Kales, H. (2018). "I've learned to just go with the flow": Family caregivers' strategies for managing behavioral and psychological symptoms of dementia. *Dementia (London)*.
- Polenick, C., Struble, L., Stanislawski, B., Turnwald, M., Broderick, B., **Gitlin, L.**, Kales, H. (2018). "The Filter is Kind of Broken": Family Caregivers' Attributions About Behavioral and Psychological Symptoms of Dementia. *Journal of the American Geriatrics Society*.
- Regier, N., **Gitlin, L.** (2018). Dementia-related restlessness: relationship to characteristics of persons with dementia and family caregivers. *International Journal of Geriatric Psychiatry*.
- Sadlo, S., Mancini, M., Meyer, D., & **Chou, J.** (2018). Mothers talk back: Exploring the experiences of formerly incarcerated mothers. *Contemporary Family Therapy*.
- Samus, Q., Black, B., Reuland, M., Leoutsakos, J., Pizzi, L., Frick, K., Roth, D., **Gitlin, L.**, Lyketsos, C., Johnston, D. (2018). MIND at Home-Streamlined: Study protocol for a randomized trial of home-based care coordination for persons with dementia and their caregivers. *Contemporary Clinical Trials*.
- Santens, T., **Levy, S., Diamond, G.**, Braet, C., Vyvey, M., Heylboeck, E., Bosmans, G. (2017). Exploring acceptability and feasibility of evidence-based practice in child welfare settings: A pilot study with attachment-based family therapy. *Psychologica Belgica*.
- Santens, T., Claes, L., **Diamond, G.**, Bosmans, G. (2018). Depressive symptoms and self-harm among youngsters referred to child welfare: The role of trust in caregiver support and communication. *Child Abuse & Neglect*.
- Sheller, S., Hudson, K., **Bloch, J.**, Biddle, B., **Krauthamer-Ewing, ES.**, **Slaughter-Acey, J.** (2018). Family Care Curriculum: A Parenting Support Program for Families Experiencing Homelessness. *Journal of Maternal and Child Health*.
- Slaughter-Acey, J.**, Talley, L., Stevenson, H. Misra, D. (2018). Personal versus Group Experiences of Racism and Risk of Delivering a Small-for-Gestational Age Infant in African American Women: a Life Course Perspective. *Journal of Urban Health*.

Spivey, S., Muruthi, B., & **Chou, J.** (2018). Karen refugees: Finding place in the family. *Journal of Feminist Family Therapy*.

Suplee, P., **Bloch, J.**, Hillier, A., Herbert, T. (2018). Using Geographic Information Systems to Visualize Relationships Between Perinatal Outcomes and Neighborhood Characteristics When Planning Community Interventions. *Journal of Obstetrics, Gynecologic & Neonatal Nursing*.

Tian, Y., Holzman, C., **Slaughter-Acey, J.**, MArgerison-Zilko, C., Luo, Z., Todem, D. (2018). Maternal Socioeconomic Mobility and Preterm Delivery: A Latent Class Analysis. *Journal of Maternal and Child Health*.

Vick, J., Amjad, H. Smith, K., Boyd, C., **Gitlin, L.**, Roth, D., Roter, D., Wolff, J. (2018). "Let him speak:" a descriptive qualitative study of the roles and behaviors of family companions in primary care visits among older adults with cognitive impairment. *International Journal of Geriatric Psychiatry*.

Wolff, J., Roter, D., Boyd, C., Roth, D., Echavarria, D., Aufill, J., Vick, J., **Gitlin, L.** (2018). Patient-Family Agenda Setting for Primary Care Patients with Cognitive Impairment: the SAME Page Trial. *Journal of Geriatric Internal Medicine*.

CENTER INITIATIVES FOR NEXT YEAR

CENTER INFRASTRUCTURE DEVELOPMENT

1. Recruit 2-4 new faculty into the Center from the College of Nursing and Health Professions, the College of Medicine, the School of Public Health and/or the College of Arts and Sciences.
2. Form a Family Caregiver Committee at the College of Nursing and Health Professions.
 - a. Explore how family-centered care is taught in College curriculum.
 - b. Explore if and how the College might offer training and certification programs for family members, community-based professionals, and paraprofessional community workers.
3. Form an academic advisory board of 6-10 experts that will meet twice a year to provide recommendations and feedback on Center research, education and practice initiatives.

RESEARCH

1. Carry out the research mission of Families FIRST, the Center's DARE proposal (if funded).
2. Continue development of community partnerships and solidify relationships between key systems and the Center's broader mission; two systems we are currently working with include:
 - a. West Philadelphia Promise Zone
 - b. Behavioral Health in the City of Philadelphia

Planned grant submissions:

1. Resubmit a College Suicide Prevention grant. Substance Abuse and Mental Health Services Administration. Target date: Feb 2019 (Diamond)
2. Submit community engagement grant in partnership with the Promise Zone. National Institute for Nursing Research R01. Target date: Feb 2019 (Diamond and Jemmott)
3. Resubmit Garret Lee Smith Suicide Prevention Grant. Target date: May 2019 (Diamond)
4. Submit capacity building grant for LGBTQIA+ behavioral health services. National Institute for Mental Health R01. Target date: June 2019 (Diamond and Jemmott)

EDUCATION

1. Develop a program unit focused on dissemination and implementation science under the leadership of Dr. Loretta Jemmott.
 - a. Create a working group in the College and across the University for faculty interested in dissemination and implementation science.
 - b. Launch the first Drexel University Dissemination and Implementation Science Institute in the summer of 2019.
2. Host year two of our speaker series and begin to invite outside speakers to the Center and College community.

PRACTICE

1. Expand our family-based clinical services with a focus on transgender and gender diverse youth, victims of violence, college students and youth struggling with suicidal ideation.
2. Host an Attachment-Based Family Therapy training program for eight Ph.D. and masters students.

CENTER DIRECTORY

GUY DIAMOND, PHD

Director, Center for Family Intervention Science
Associate Professor, Counseling and Family Therapy
gd342@drexel.edu
#suicide #depression #familytherapy

LISA CHIARELLO, PT, PHD, FAPTA

Assoc. Director, Center for Family Intervention Science
Professor, Physical Therapy and Rehabilitation Sciences
lc38@drexel.edu
#pediatricrehabilitation #familyengagement

CAMERON MCCONKEY

Manager, Center for Family Intervention Science
cm3526@drexel.edu
#lgbthealth #healthequity #healthpolicy

LAURA N. GITLIN, PHD, FAAN

Dean, College of Nursing and Health Professions
Distinguished University Professor
lng45@drexel.edu
#aging #dementia #sociology

ROBERT PALISANO, PT, SCD, FAPTA

Associate Dean of Research, College of Nursing and Health Professions
Distinguished Professor, Physical Therapy and Rehabilitation Science
rjp33@drexel.edu
#physicaldisabilities #neurodevelopmentaldisabilities

LORETTA JEMMOTT, PHD, RN, FAAN

Vice President, Health and Health Equity
Professor, Division of Graduate Nursing
lsj33@drexel.edu
#communityengagement #healthequity #HIV/AIDS

CONTACT US

Center for Family Intervention Science
3020 Market Street, Suite 510
Philadelphia, PA 19104
(215) 571-3420
www.drexel.edu/familyintervention

TITA ATTE, MPH, CPH

Director of Mental Health Screening
ta63@drexel.edu
#behavioralhealth #screening #integratedcare

JOAN BLOCH, PHD, CRNP, FAAN

Associate Professor, Division of Graduate Nursing
jrb68@drexel.edu
#womenshealth #chronicstress #maternalchildhealth

JESSICA CHOU, PHD, LPC

Assistant Professor, Counseling and Family Therapy
jlc563@drexel.edu
#substanceabuse #addiction #womenshealth

PAMELA GELLER, PHD

Associate Professor, Psychology
pg27@drexel.edu
#womenshealth #motherbabyconnections

STEPHANIE KRAUTHAMER-EWING, PHD, MPH

Assistant Professor, Counseling and Family Therapy
sewing@drexel.edu
#emotionaldevelopment #attachment #childdevelopment

SUZANNE LEVY, PHD

Director of Clinical Training, ABFT Training Program
sal89@drexel.edu
#suicide #depression #familytherapy

BRANDY-JOE MILLIRON, PHD

Assistant Professor, Nutrition Sciences
bm645@drexel.edu
#nutrition #wellness #healing #cancercaregiving

BOBBIE POSMONTIER, PHD, CNM, PMHNP-BC

Associate Professor, Division of Graduate Nursing
bp98@drexel.edu
#postpartumdepression #motherbabyconnections

JAMIE SLAUGHTER-ACEY, PHD, MPH

Assistant Professor, Health Systems and Sciences Research
jcs396@drexel.edu
#intersectionality #race #skincolor #maternalchildhealth