



DREXEL UNIVERSITY

Dornsife

School of Public Health

2025

APPLIED PRACTICAL EXPERIENCE

GUIDEBOOK FOR MPH STUDENTS:
EXAMPLES OF PROJECTS AND
DELIVERABLES

Table Of Contents

01 Requirements

02 Location

03 Industry

04 Departments

05 Next Steps



REQUIREMENTS

As part of the curriculum, DSPH MPH students must complete a 120-hour [Applied Practical Experience \(APE\)](#), a supervised, hands-on practice opportunity designed to help students apply public health skills in real-world settings. This experience typically occurs in the spring or summer of the first year.

Students may complete their APE within a DSPH community partner organization, their current workplace, or any other approved external site. MPH students may secure placements through independent networking, support from a faculty mentor, or opportunities posted on [Symplicity](#) or [Handshake](#). Additional guidance on finding projects or internships can be found in the [Internship and Job Search](#) resources on DASH.

The APE must result in at least two deliverables that demonstrate attainment of five CEPH [Foundational Competencies](#), with the option to address two additional [Major Competencies](#).

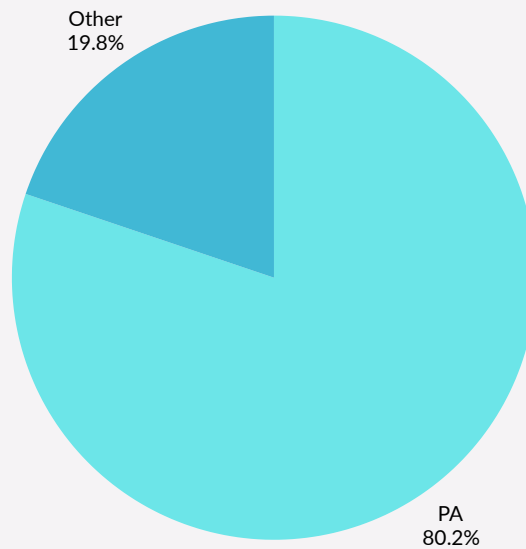
The APE is distinct from the Integrated Learning Experience (ILE) because it lasts only one term and does not need to relate to the student's major or primary program focus.

This project guide features examples of past student APE projects and is organized by location, industry, department, and topic. Students are encouraged to explore these examples for inspiration, to understand what may be feasible, and to spark conversations with faculty mentors. Please note that the availability of similar opportunities cannot be guaranteed each year.

Students with questions about opportunities similar to those listed in the guide should consult their faculty mentor or academic advisor.

LOCATION

This section highlights where APEs were completed, showcasing geographic trends of placement settings.



80% of APEs occurred in Pennsylvania.

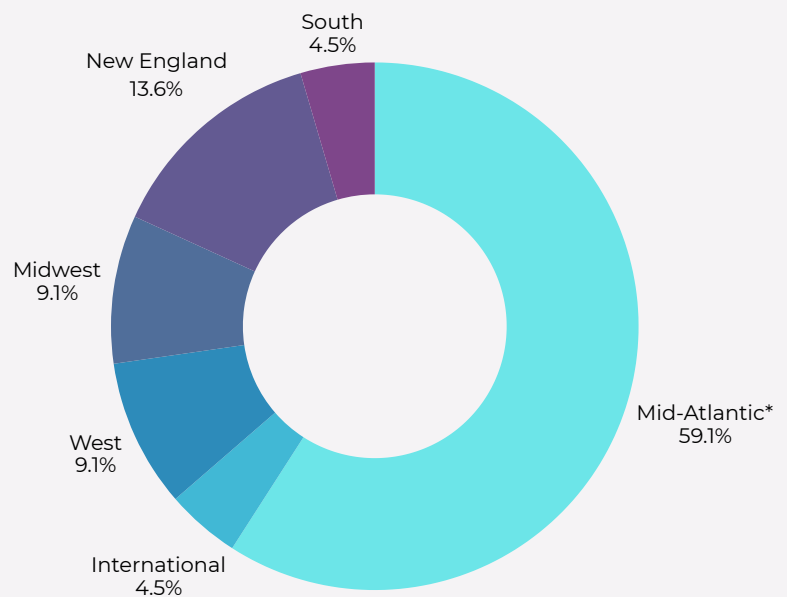
60% of APES occurred in Philadelphia.

Domestic: AK, CA, CT, D.C., GA, IL, MA, MD, MO, NJ, NY, VA

International: Peru

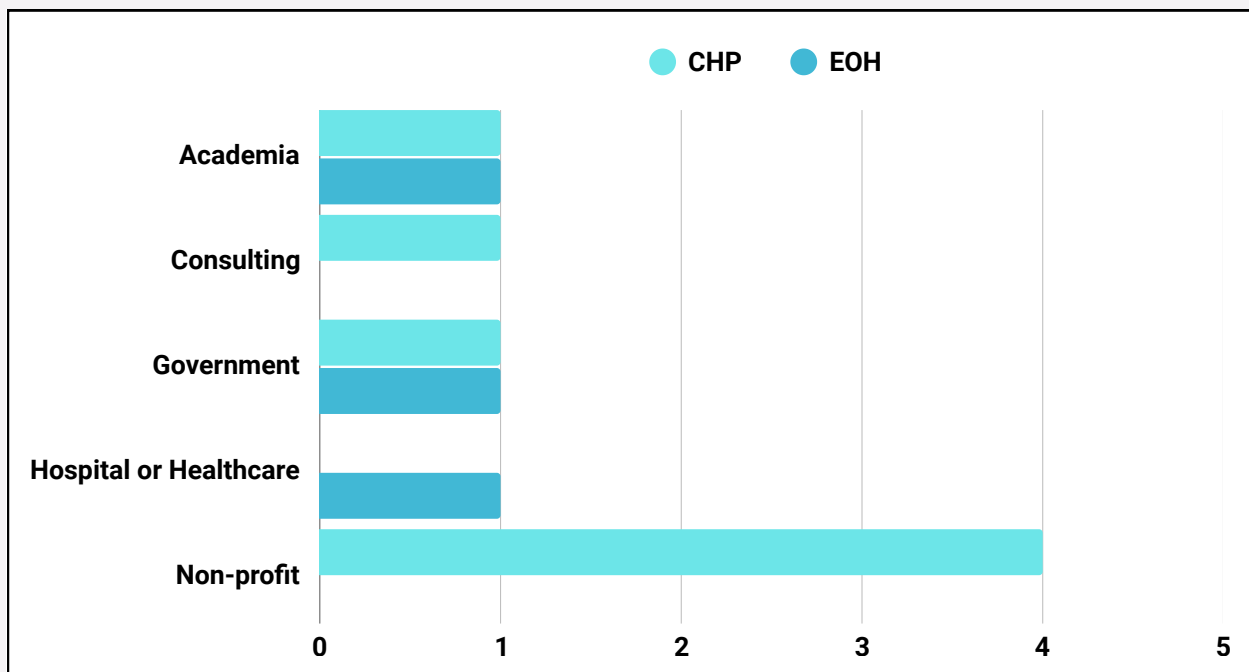
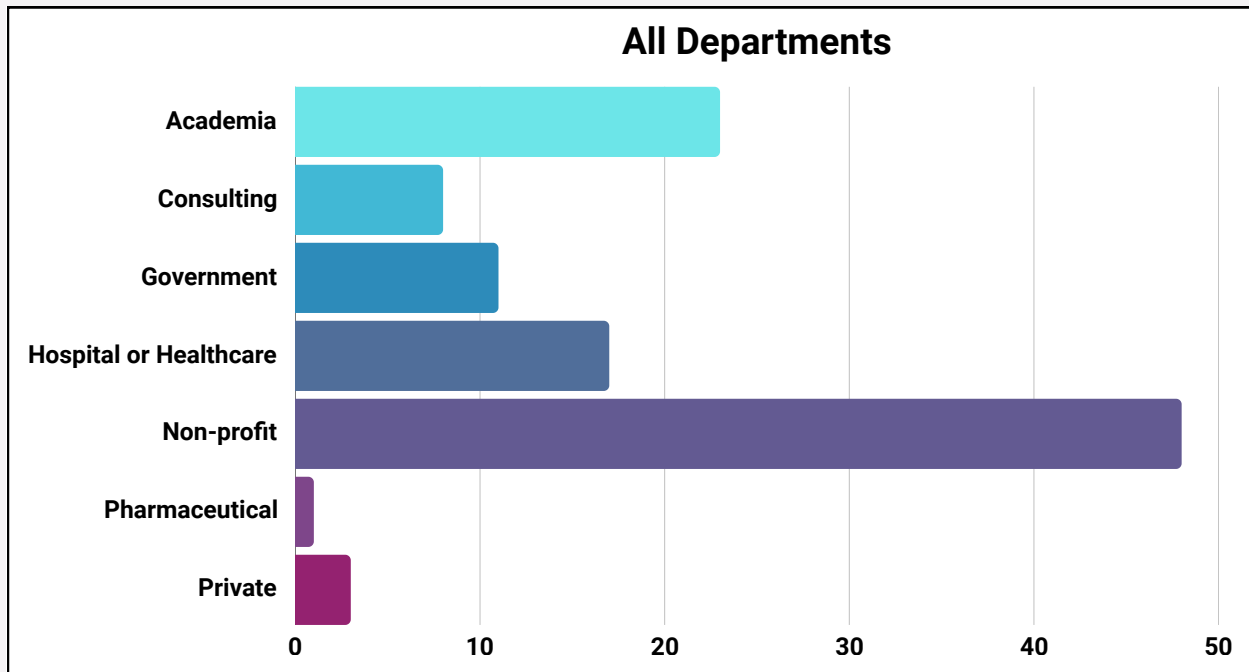
Some placements are remote.

*excludes PA

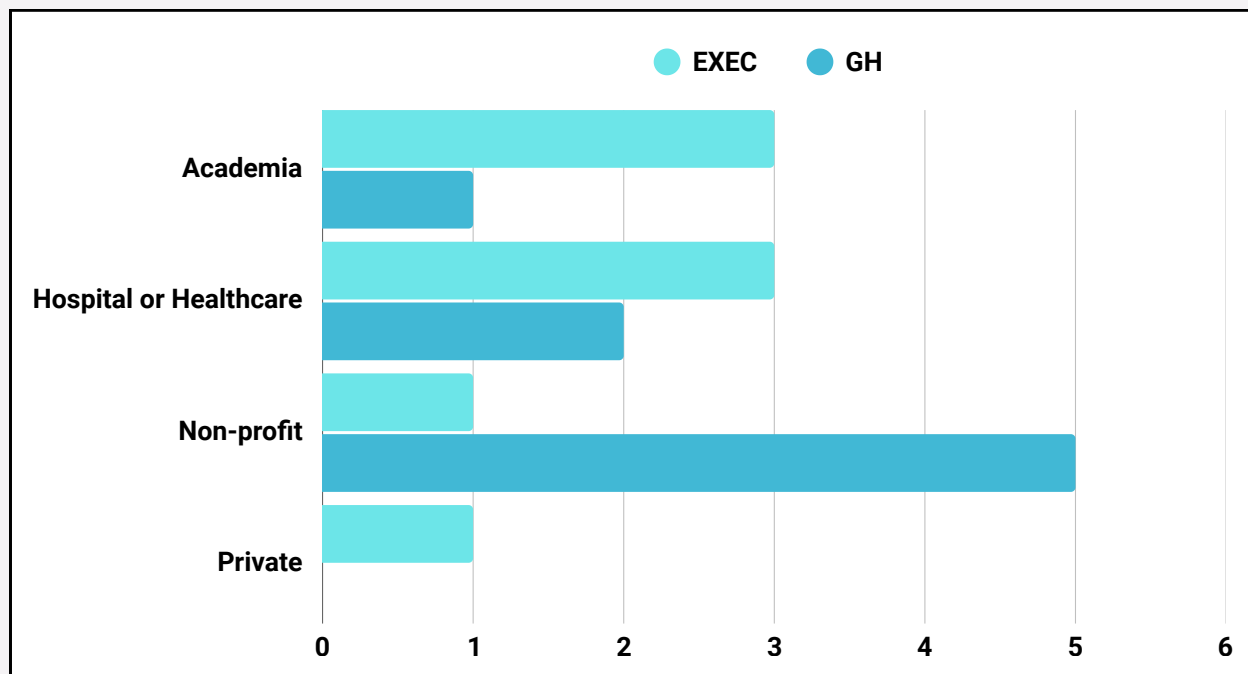
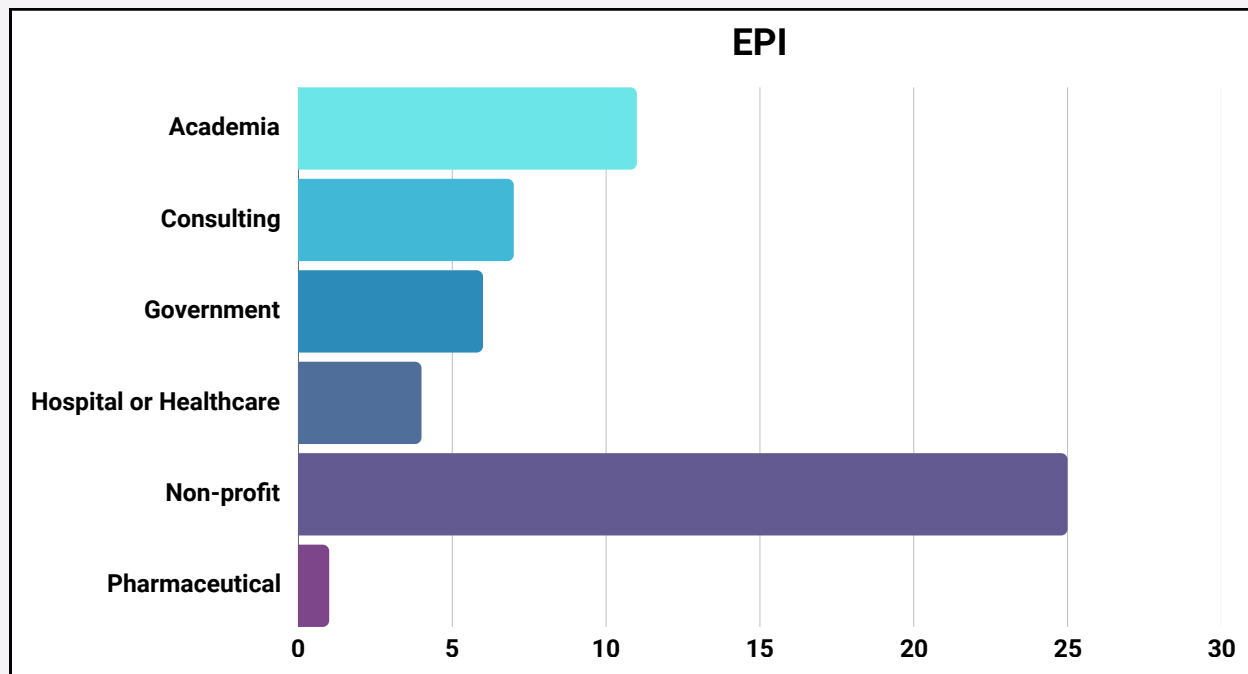


INDUSTRY

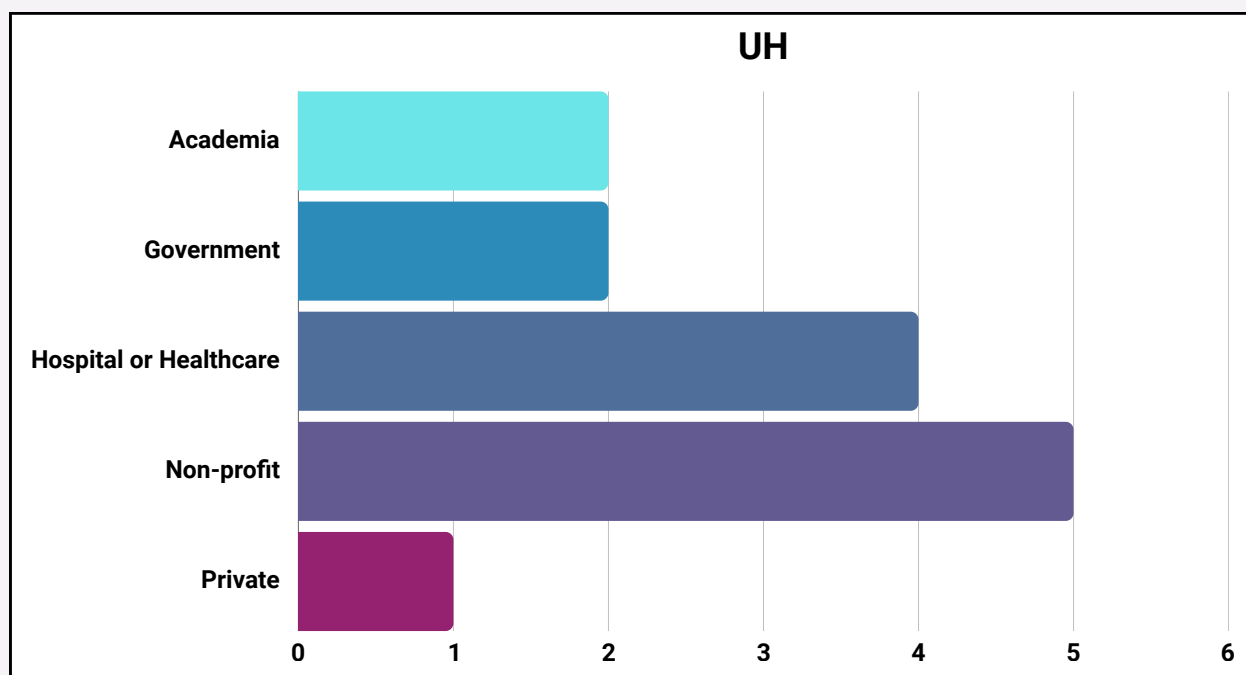
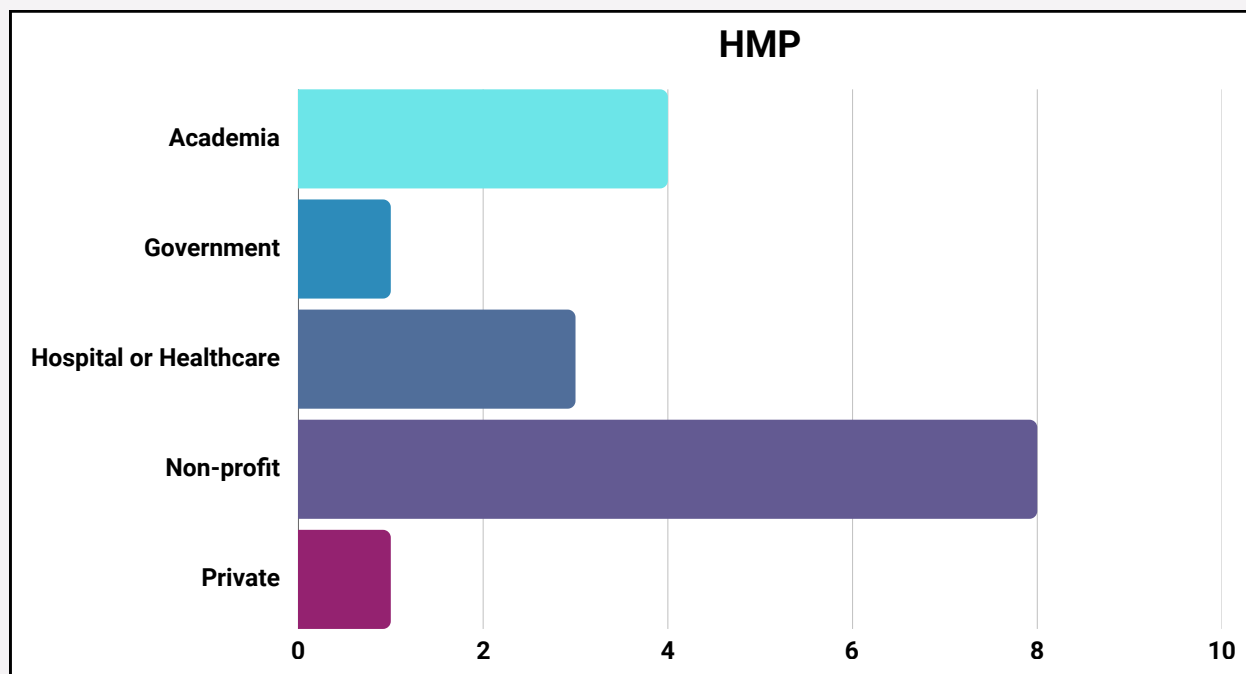
This section categorizes host organizations by industry to illustrate the range of public health sectors students engaged with.



INDUSTRY



INDUSTRY





Community Health and Prevention

Listed below are APE sites, deliverables, competencies, and topics, organized across the seven MPH departments. An overview of deliverable categories are listed on the last page of the department section. A full description of the competencies is available on the requirement page.

Organizations

A Book a Day, ACG Health, Broad Street Love (Bridging the Gap), Drexel University, MamaBird, Philadelphia Department of Public Health, Sunrise

Deliverables

- Media and Outreach Products
- Presentations and Training Resources
- Reports and Assessments
- Research and Data Projects

Competencies

- Evidence-based Approaches to Public Health: 1, 2, 3, 4
- Public Health & Health Care Systems: 6
- Planning & Management to Promote Health: 7, 8, 9, 11
- Leadership: 16
- Communication: 18, 19, 20
- Interprofessional Practice: 21

Topics

- Black adult cigarillo use
- Diaper and period poverty
- Doula planning
- NICU family literacy and bonding
- Opioid overdose hotspots
- Poverty
- Youth trauma-informed health education



Environmental and Occupational Health

Organizations

Drexel HOPE, Philadelphia Gas Works

Deliverables

- Media and Outreach Products
- Policy and Advocacy Documents
- Presentations and Training Resources
- Reports and Assessments

Competencies

- Evidence-based Approaches to Public Health: 1, 4
- Planning & Management to Promote Health: 7, 8, 9, 11
- Policy in Public Health: 15
- Communication: 18, 19
- Interprofessional Practice: 21

Topics

- Climate resilience and flood-management in Amazon cities
- Hepatitis A/B
- Workplace safety

Epidemiology

Organizations

A Book a Day, A.J. Drexel Autism Institute, ACG Health, American Federation of Teachers, Augusta University, Blue Zone Projects, Bridging the Gaps, Carthage Area Hospital - Infectious Control Department, Center for Leadership, Development and Advocacy, Inc., CHFI Global Health - Uganda, Children's Hospital of Philadelphia, Coco Life Inc., Delaware County Health Department, Drexel University - College of Computing and Informatics, Drexel University - Medical Cannabis Research Center, Drexel University - Ubuntu Center, Drexel University - Urban Health Collaborative, Educators 4 Education, George Washington University - Center for Health and Health Care in Schools, Inova Health System - Inova Fairfax Medical Campus, Ledge Light Health District, Loaves and Fishes Food Pantry, Lutheran Settlement House, National Kidney Foundation, Penn Medicine - Perelman Center for Advanced Medicine, Philadelphia Department of Public Health - Environmental Health Services; HIV Health Division, Prevention Point Philadelphia, Stanford Medicine, Tender Grassroots, Town of Agawam Department of Health, Verrica Pharmaceuticals, Women for Healthy Environment, Women Who Never Give Up Inc.

Deliverables

- Educational and Communication Materials
- Media and Outreach Products
- Policy and Advocacy Documents
- Presentations and Training Resources
- Proposals and Plans
- Reports and Assessments
- Research and Data Projects

Competencies

- Evidence-based Approaches to Public Health: 1, 4
- Planning & Management to Promote Health: 7, 8, 9, 11
- Policy in Public Health: 15
- Communication: 18, 19
- Interprofessional Practice: 21

Epidemiology

Topics

- Added-sugar menu warning label
- Autism
- Black health
- Black maternal health
- Blue zones
- Child and family health
- Climate and health
- Climate research (SALURBAL)
- Clinical medical record
- COVID & flu vaccination status
- Dermatology pharmaceutical operations
- Diabetes education in rural Uganda
- Digital midwifery EMR evaluation
- Driver's education health curriculum
- Environmental justice and criminal justice reform
- Flu & pneumonia mortality trends
- Food insecurity
- Food pantry
- Harm reduction
- Healthy Childcare Champion Program
- Hepatitis
- Hepatitis A/C and refugee children
- HIV
- HIV/substance-use
- Hospital infection prevention: hand hygiene
- Hypertension in rural Uganda
- Kidney disease
- Kidney health
- Mandatory reporting and educational neglect
- Medical cannabis qualitative review
- Medicare and Medicaid
- Menstrual product access
- Molecular epidemiology
- Mosquitos and ticks
- NICU family literacy & bonding
- Orthopedic oncology patients
- Race/ethnicity data equity (Pan-DIASPORA)
- Travel-abroad program systematic review
- Violence intervention and trauma-informed services
- Women re-entry health navigation



Executive

Organizations

Capital Health Medical Center, Charles River Laboratories, Children's Hospital of Philadelphia, Drexel University Dornsife School of Public Health, Drexel University Urban Health Collaborative, Goucher College, National Nurse-led Care Consortium, Saint Peter's University Hospital Population Health Department

Deliverables

- Educational and Communication Materials
- Media and Outreach Products
- Policy and Advocacy Documents
- Presentations and Training Resources
- Proposals and Plans
- Reports and Assessments
- Research and Data Projects

Competencies

- Evidence-based Approaches to Public Health: 2, 3, 4
- Public Health & Health Care Systems: 6
- Planning & Management to Promote Health: 7, 8, 11
- Policy in Public Health: 13, 15
- Leadership: 16
- Communication: 18, 19, 20
- Interprofessional Practice: 21

Topics

- AmeriCorps Nursing Fellowship program
- Emerging cultural leaders
- Opioid response and community engagement
- R1 study data documentation
- Stillbirth prevention and bereavement support
- Workplace safety



Global Health

Organizations

American Foundation for Suicide Prevention - Greater Philadelphia Chapter, Center for Leadership, Development, and Advocacy, Drexel University Ubuntu Center, Educators 4 Education, Loaves and Fishes Food Pantry, Tender Grassroots, Thomas Jefferson University - Hematology Clinic; SKCC

Deliverables

- Educational and Communication Materials
- Presentations and Training Resources
- Proposals and Plans
- Reports and Assessments
- Research and Data Projects

Competencies

- Evidence-based Approaches to Public Health: 2, 3, 4
- Public Health & Health Care Systems: 5, 6
- Planning & Management to Promote Health: 7, 8, 9, 10
- Policy in Public Health: 13, 14
- Leadership: 16
- Communication: 18, 19
- Interprofessional Practice: 21

Topics

- Black culturally competent suicide prevention outreach
- Cancer screening
- Driver's Education curriculum
- Food pantry
- Hepatitis B and HPV in Uganda
- Menstrual product
- Sickle cell
- Urban agriculture health



Health Management and Policy

Organizations

AmeriBest Home Care, Cancer Epidemiology Education in Special Populations, Center for Leadership, Development and Advocacy, Inc., Children's Hospital of Philadelphia, Drexel University - Dornsife School of Public Health; Urban Health Collaborative, Educators 4 Education, Headen Research Group, Independence Blue Cross, Infectious Disease Society of America, Jefferson Health, Maryland Department of Health & Office of Children and Youth with Special Health Care Needs, Philadelphia Corporation for Aging, Tender Grassroots, Uplifme, Vive Peru, Women for a Healthy Environment

Deliverables

- Educational and Communication Materials
- Policy and Advocacy Documents
- Presentations and Training Resources
- Proposals and Plans
- Reports and Assessments
- Research and Data Projects

Competencies

- Evidence-based Approaches to Public Health: 1, 2, 3, 4
- Public Health & Health Care Systems: 5, 6
- Planning & Management to Promote Health: 7, 8, 9, 11
- Policy in Public Health: 12, 13, 14, 15
- Leadership: 16
- Communication: 18, 19
- Interprofessional Practice: 21
- Systems Thinking: 22



Health Management and Policy

Topics

- Aging services program
- Cervical cancer
- Childcare
- Children in bereavement
- Community health needs
- Health literacy barriers (medicare population)
- Home care client services
- Homeless shelter locations
- Hospitality worker benefits
- Infection prevention workflow & policy
- Infectious diseases workforce development
- Juvenile diversion curriculum
- Maternal & child health
- Maternal health
- Parasite prevention
- Professional development
- Uganda children nutrition



Urban Health

Organizations

Alaskan AIDS Assistance Association, American Dental Hygienists' Association, Center for Adolescent and Young Adult Health, Centerpoint Independence Medical Center, Children's Hospital of Philadelphia, CraftNOW Philadelphia, Drexel University Dornsife School of Public Health, Educators 4 Education, Hamilton Township Division of Health, The Hun School of Princeton, New Jersey Department of Health, Renewal Church, Repisodic

Deliverables

- Educational and Communication Materials
- Media and Outreach Products
- Policy and Advocacy Documents
- Presentations and Training Resources
- Reports and Assessments
- Research and Data Projects

Competencies

- Evidence-based Approaches to Public Health: 2, 3, 4
- Public Health & Health Care Systems: 6
- Planning & Management to Promote Health: 7, 8, 9
- Policy in Public Health: 12, 13, 14, 15
- Leadership: 16
- Communication: 18, 19, 20
- Interprofessional Practice: 21
- Systems Thinking: 22



Urban Health

Topics

- Alcohol-involved sexual violence prevention
- Dating violence prevention
- Dental hygienist autonomy
- Faith-based social connection & health literacy
- Health literacy
- HIV/AIDS
- Insurance prior-authorization rules
- Public health accreditation preparation
- Sex/gender differences in African child morbidity
- Type 2 diabetes risk factors in youth
- Uninsured/unhoused
- Urban driver's education
- WIC food delivery unit
- Youth art camp mental health

Deliverable Categories

1. Research and Data Projects (research, survey, data collection/analysis/visualization, literature review)
2. Reports and Assessments (evaluation, needs assessment, case study, summary)
3. Proposals and Plans (grant, policy, or action planning document)
4. Policy and Advocacy Documents (brief, memo, paper, op-ed, policy revision)
5. Educational and Communication Materials (toolkit, manual, brochure, pamphlet, guideline)
6. Media and Outreach Products (infographic, flyer, newsletter, social media, website, video)
7. Presentations and Training Resources (slide deck, poster, webinar, lesson plan, curricula, logic model, facilitator guide)

APE Example

Shannon Lennon, MPH Urban Health

Shannon completed the APE at the Hun School of Princeton, a private day and boarding school for students in grades 6-12 and post-graduate education.

Shannon collaborated with other disciplines to address the health literacy needs and well-being of our boarding student population.

Deliverables:

- Research and Data Projects (research, survey, data collection/analysis/ visualization, literature review): **literature review**
- Media and Outreach Products (infographics, flyers, newsletters, social media, websites, videos): **infographic**

Foundational Competencies:

- Evidence-based Approaches to Public Health: 3, 4
- Planning & Management to Promote Health: 11
- Communication: 18, 19

NEGATIVE IMPACTS OF SUBSTANCE USE

Physical Health

Substances such as alcohol and marijuana can impact brain development and weaken your immune system

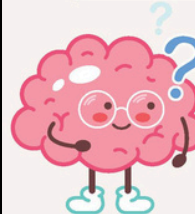
1



Mental Health

Substance use can make mental health conditions such as anxiety and depression worse over time

2



Emotional Well-Being

Using alcohol and other substances can strain our relationships with friends, family and romantic partners

3



Be Mindful

Reflect on why you might choose to drink alcohol or use substances and how it impacts your relationships, school work, and daily life

4



Stay Safe

Use the buddy system, have a sober friend, have a plan, know the risks, and look out for one another

5



Ask for Help

Resources are available on and off campus. Hun has an amnesty policy for those struggling with substance use.

6



Nurses are available 24/7, 7 days a week in The Levine Family Health Center.
Counselors are available by appointment during school hours.
healthservices@hunschool.org / counseling@hunschool.org.

Call/Text 988.

APE Example

Nadege Mudenge, MPH Epidemiology

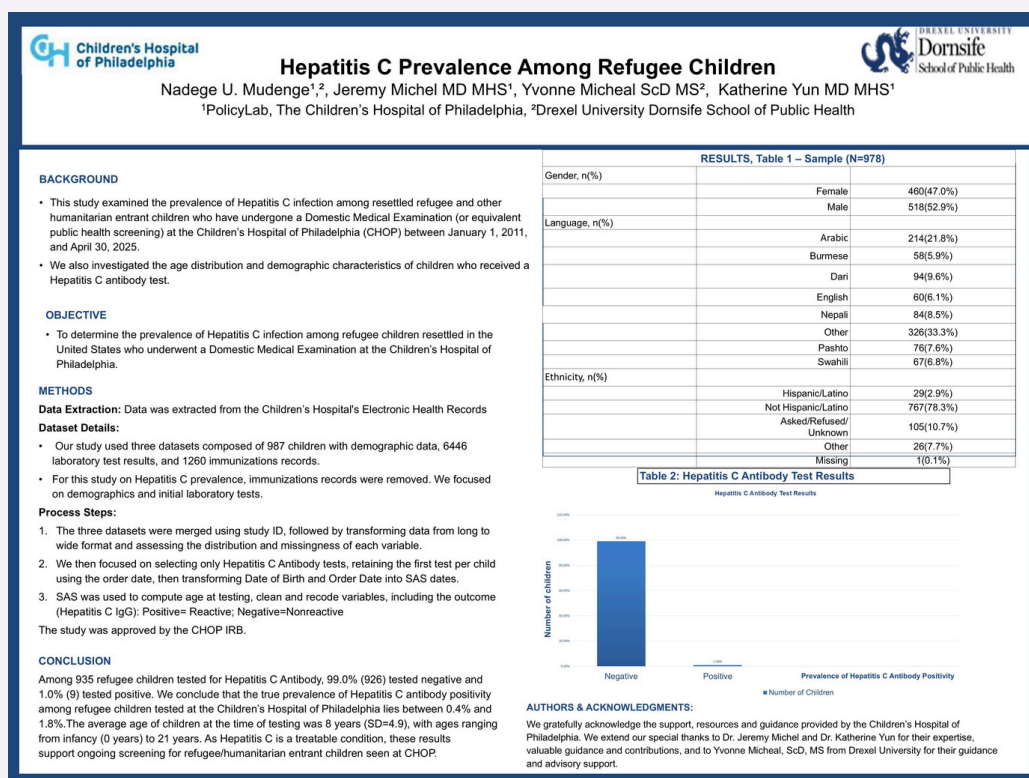
Nadege completed the APE at the Children's Hospital of Philadelphia's Refugee Child Health Program. RCHP ensures that newly-arrived refugee and other humanitarian entrant children have a healthy start in the United States by providing medical exams, screenings for infectious conditions, and immunizations.

Deliverables:

- Presentations and Training Resources (slide deck, posters, webinars, lesson plans, curricula, logic models, facilitator guides): **PowerPoint**
- Presentations and Training Resources (slide deck, posters, webinars, lesson plans, curricula, logic models, facilitator guides): **Academic poster**

Foundational Competencies:

- Evidence-based Approaches to Public Health: 1, 3, 4
- Planning & Management to Promote Health: 11
- Communication: 19



NEXT STEPS

PROFESSIONAL DEVELOPMENT SERIES (PDS)

The PDS consists of career-themed workshops designed to aid in your career preparation journey by allowing time for you to improve components of your professional life.

In order to complete the APE, it is required that all first year MPH students* complete the Professional Development Series workshops. To learn more about this requirement, please visit the [DASH PDS page](#).

*The following programs are excluded from this requirement: BA/MPH, BS/MPH, MD/MPH, JD/MPH, and EMPH.

TIMELINE

The APE fulfills the PBHL 500 course requirement (after the successful completion of PBHL 510 & 511) and should be completed before starting. Students should review this document for important deadlines and due dates in order to secure approval for the APE.

Note: International Students must complete and submit Curricular Practical Training (CPT) paperwork by the end of the current term before the term they would like to complete their APE in. See [form](#).

For additional information, please visit the [DASH APE page](#) or contact [Tariem Burroughs](#), *Executive Director of External Partnerships*.



Contact us

Phone

267.359.6000

Email

askdornsife@drexel.edu

Website

www.drexel.edu/dornsife

Address

Nesbitt Hall, 2nd floor
3215 Market Street
Philadelphia, PA 19104