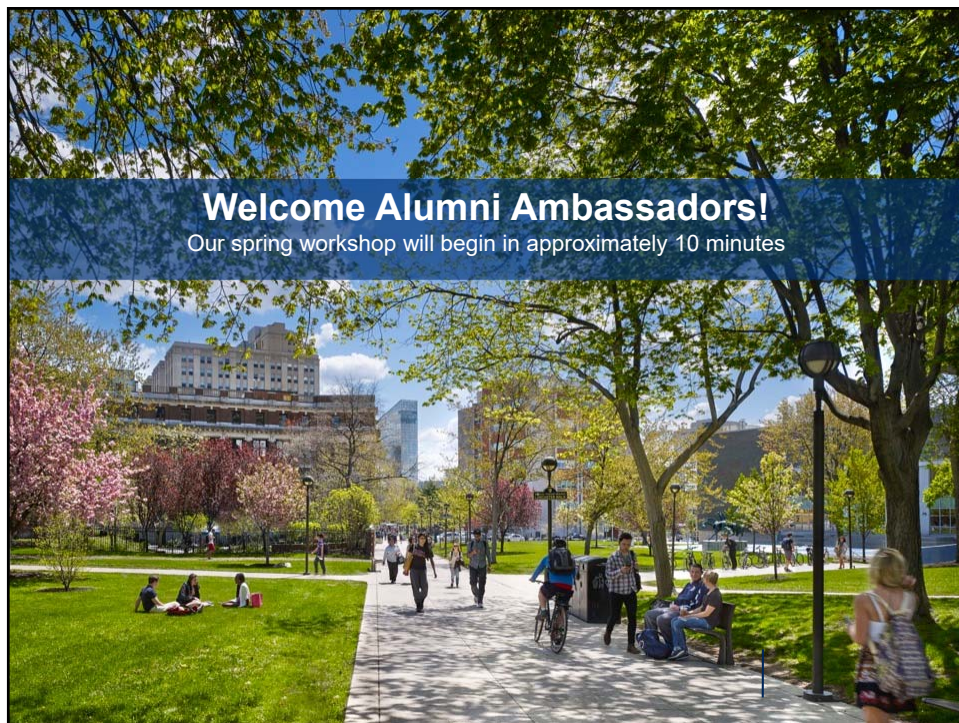
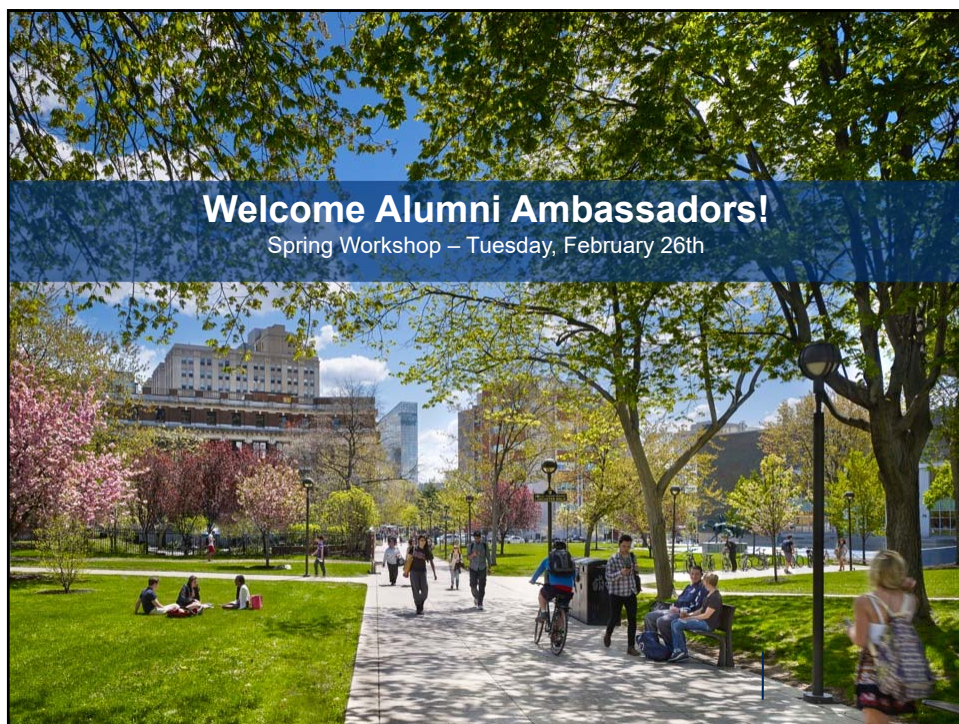




1



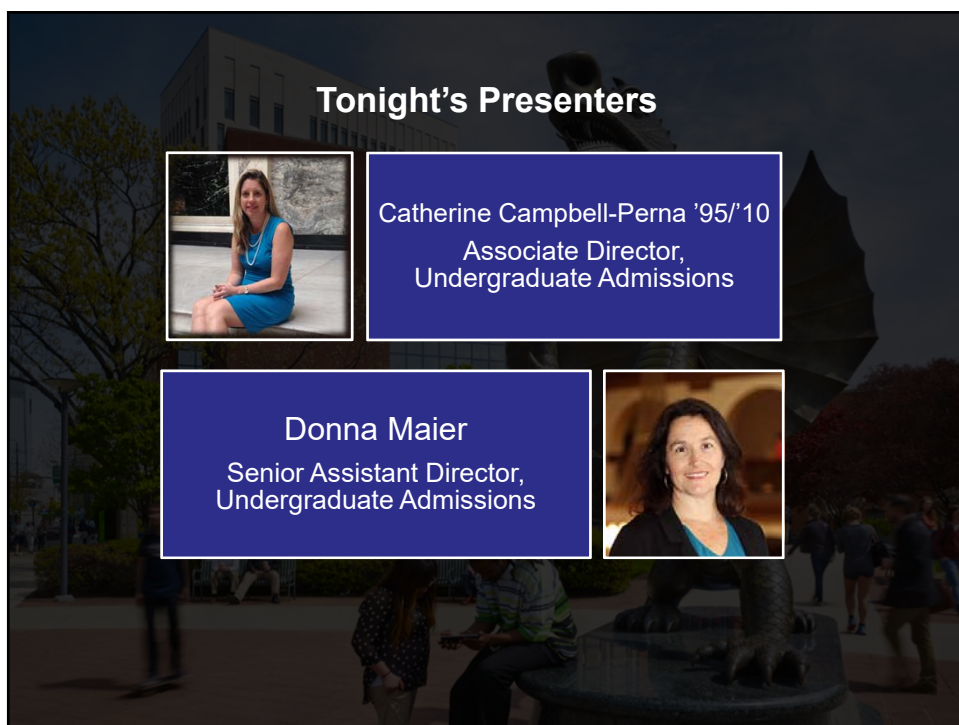
2



Welcome Alumni Ambassadors!

Spring Workshop – Tuesday, February 26th

3



Tonight's Presenters

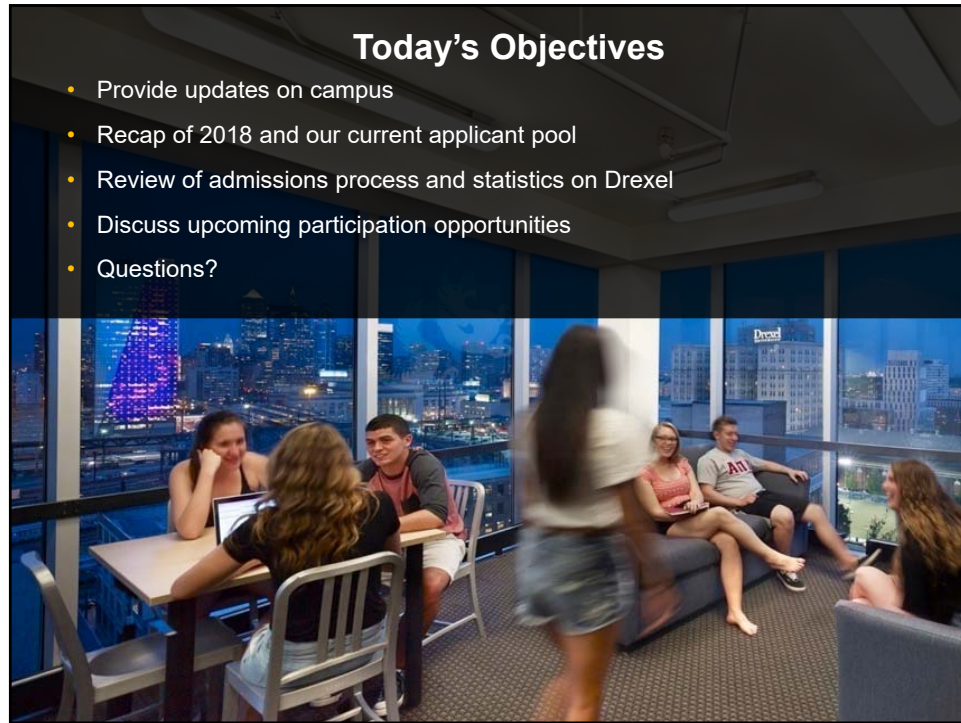


Catherine Campbell-Perna '95/'10
Associate Director,
Undergraduate Admissions

Donna Maier
Senior Assistant Director,
Undergraduate Admissions



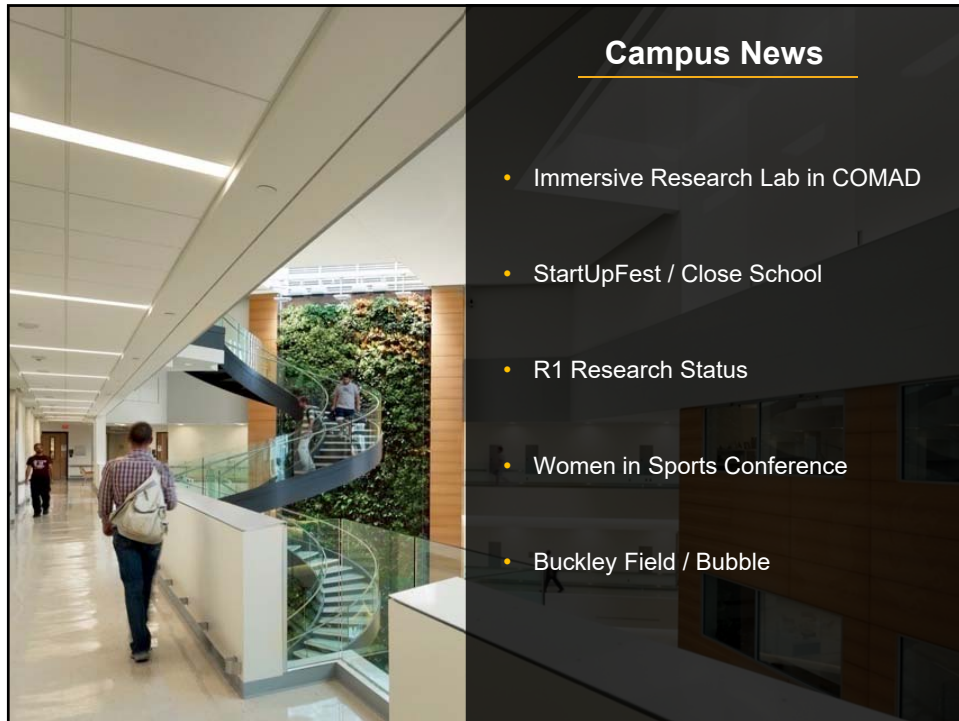
4



5



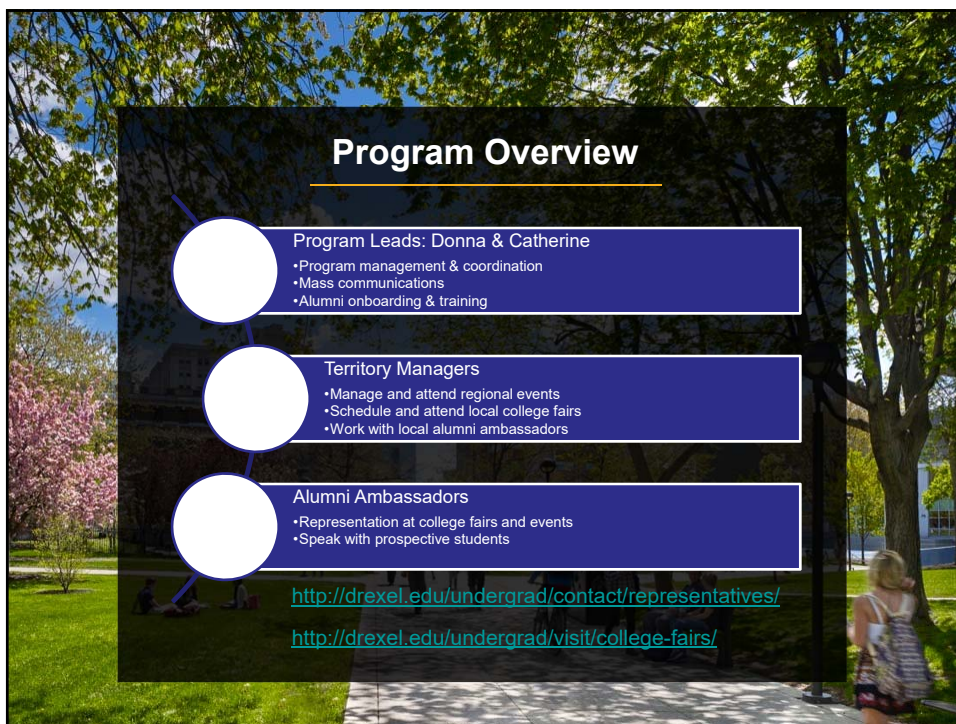
6



7



8

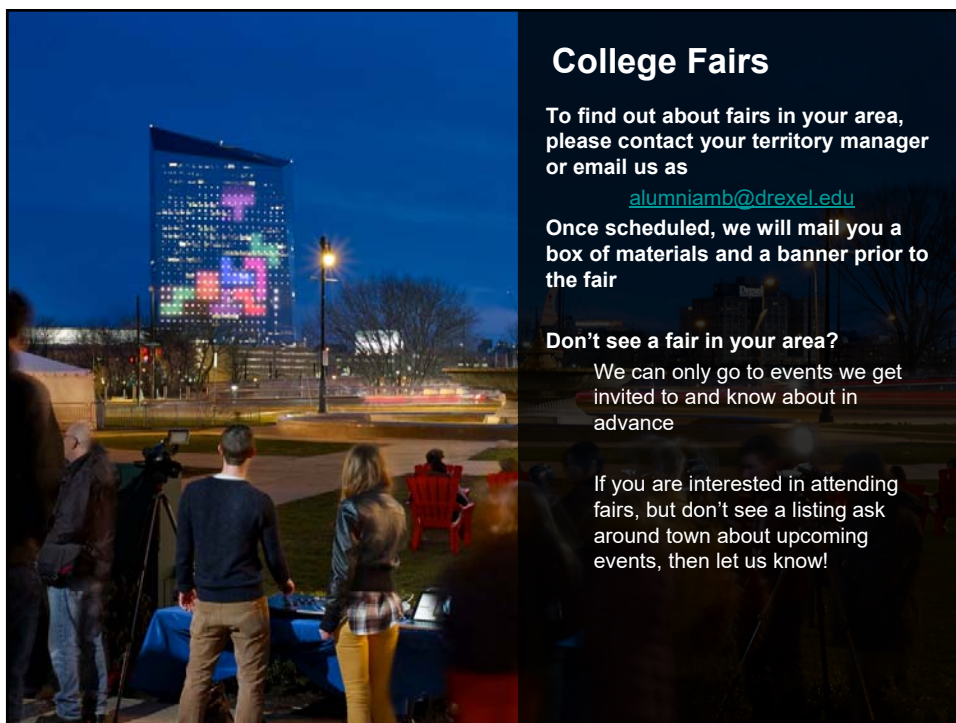


Program Overview

- Program Leads: Donna & Catherine**
 - Program management & coordination
 - Mass communications
 - Alumni onboarding & training
- Territory Managers**
 - Manage and attend regional events
 - Schedule and attend local college fairs
 - Work with local alumni ambassadors
- Alumni Ambassadors**
 - Representation at college fairs and events
 - Speak with prospective students

<http://drexel.edu/undergrad/contact/representatives/>
<http://drexel.edu/undergrad/visit/college-fairs/>

9



College Fairs

To find out about fairs in your area, please contact your territory manager or email us as alumniamb@drexel.edu

Once scheduled, we will mail you a box of materials and a banner prior to the fair

Don't see a fair in your area?

We can only go to events we get invited to and know about in advance

If you are interested in attending fairs, but don't see a listing ask around town about upcoming events, then let us know!

10

College Fairs

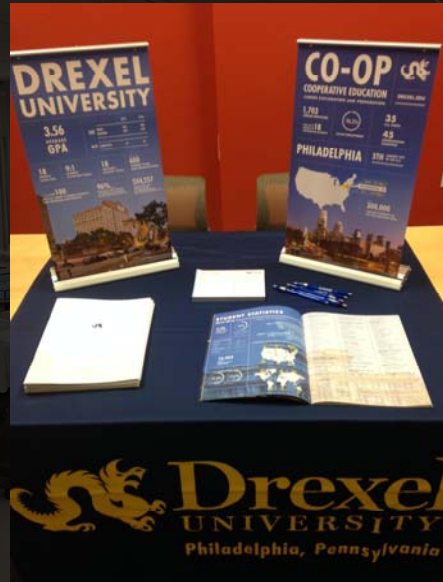
Represent Drexel at local high schools!

Preparing for the college fair :

- Plan extra time to arrive and set-up
- Dress appropriately (Usually business casual, Blue and Gold always looks good)
- Re-read your fact sheets and make sure you have all of your materials
- Stay behind your table
- Remember your nametag

Post-college fair

- Mail us the Inquiry Cards you collected
- Fill out the fair survey and provide us with your feedback
- You are welcome to give the students your contact information for follow-up
- Let us know about any difficult questions



11

Ask-A-Dragon

Respond to individual phone or email inquiries from prospective students

Students initiate contact by selecting you from our online listing

Check out the website at:

<http://www.drexel.edu/undergraduate/contact/ask-an-alum/>

To add or update your info

email: alumniamb@drexel.edu




12



Admissions Process Overview

13



Application checklist

- ✓ Application- Common Application
- ✓ Application Fee- \$50
- ✓ High School Transcripts
- ✓ Test Scores
- ✓ Essay
- ✓ 2 Letters of Recommendation
- ✓ Supplemental Materials
 - ✓ Writing Supplement
 - ✓ Portfolio
 - ✓ Auditions
- ✓ CSS Profile & FAFSA

<http://www.drexel.edu/undergrad/apply/freshmen-instructions/>

14

Test Flexible Policy

- SAT or ACT reasoning test
- Two SAT II subject tests
- Two AP test scores
- International Baccalaureate Diploma or Two IB-High Level Exams
- National Exam Results



15

Application Types

Early Decision

Binding application decision that allows students to be notified of their application decision at an earlier date. If a student is offered admissions, they must attend Drexel University and withdrawn other applications.

Early Action

Non-binding application decision that allows students to be notified of their application decision at an earlier date

By applying early, students will receive a decision of admission, denial, or deferral to regular decision about a month and a half after the deadline.

Regular Decision

Non-binding application to Drexel. This is the last deadline for students to apply for admission.

Every major will have seats open for students applying regular decision.

16

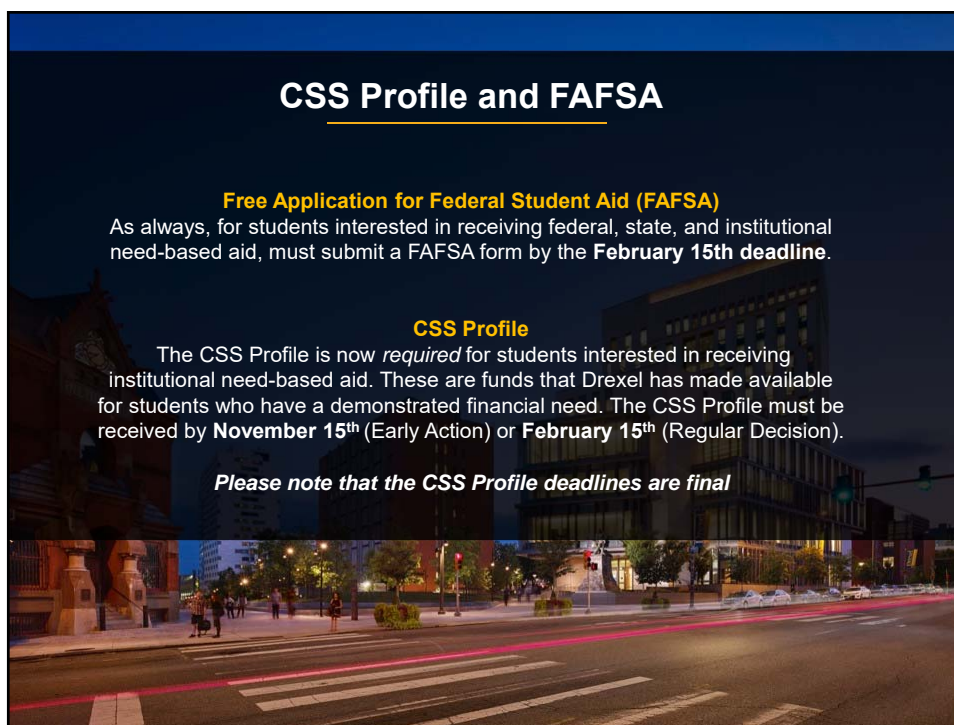


Freshman Admission Deadlines

1 Nov	15 Jan	15 Feb	15 Feb	1 May
Early Decision/ Early Action	Regular Decision	CSS Profile Due	FAFSA	Enrollment Form & Tuition Deposit
CSS Profile Due Nov 15				

CSS profile is required for institutional need-based aid

17



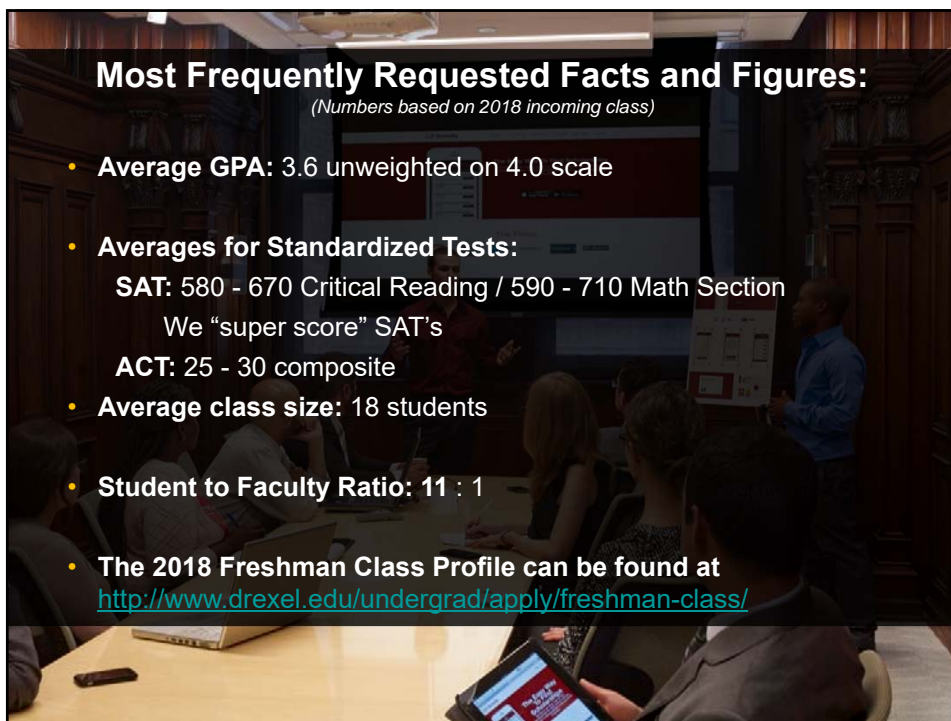
CSS Profile and FAFSA

Free Application for Federal Student Aid (FAFSA)
As always, for students interested in receiving federal, state, and institutional need-based aid, must submit a FAFSA form by the **February 15th deadline**.

CSS Profile
The CSS Profile is now *required* for students interested in receiving institutional need-based aid. These are funds that Drexel has made available for students who have a demonstrated financial need. The CSS Profile must be received by **November 15th** (Early Action) or **February 15th** (Regular Decision).

Please note that the CSS Profile deadlines are final

18

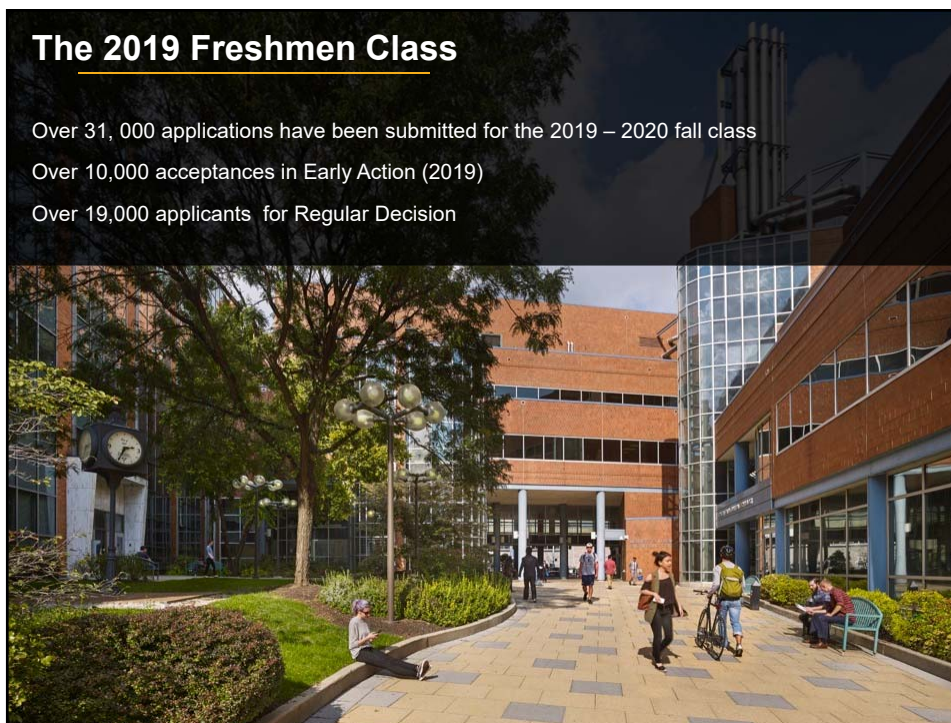


Most Frequently Requested Facts and Figures:

(Numbers based on 2018 incoming class)

- **Average GPA:** 3.6 unweighted on 4.0 scale
- **Averages for Standardized Tests:**
 - SAT:** 580 - 670 Critical Reading / 590 - 710 Math Section
 - We "super score" SAT's
 - ACT:** 25 - 30 composite
- **Average class size:** 18 students
- **Student to Faculty Ratio:** 11 : 1
- **The 2018 Freshman Class Profile can be found at**
<http://www.drexel.edu/undergrad/apply/freshman-class/>

19



The 2019 Freshmen Class

Over 31,000 applications have been submitted for the 2019 – 2020 fall class

Over 10,000 acceptances in Early Action (2019)

Over 19,000 applicants for Regular Decision

20

Most Frequently Requested Facts and Figures:

(Numbers based on 2018 incoming class)

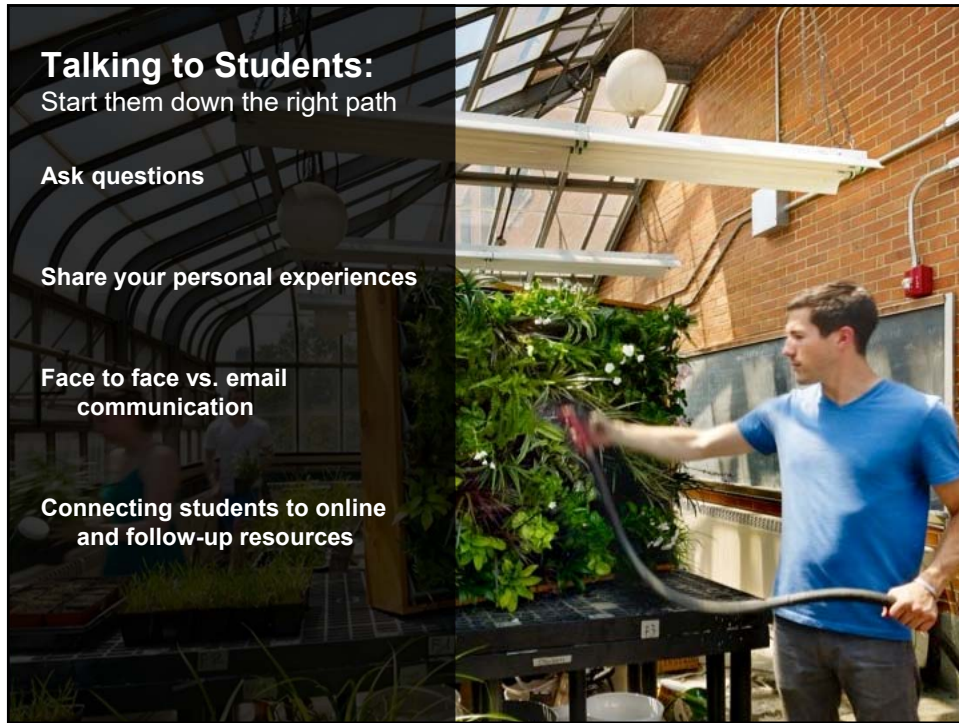
- **Drexel is a residential campus.** For the first two years, Drexel students must live in Drexel residence halls or on-campus apartments.
- **Co-op placement rate:** 98.2% of students receive a co-op placement
- **Average Co-op Salary:** over \$18,000
- **Drexel offers special advising tracks for students interested in medical, healthcare, and law graduate programs.** Advising tracks are open to all students.
- **Advanced Placement (AP) policy:** We will accept AP test scores of 4 and 5 for college credit, academic advisor will determine awarded credit after acceptance.
- **Scholarship amounts:** The ranges vary based on the applicant pool. Encourage the student to submit the FAFSA and CSS Profile for complete consideration for Financial Aid

21

Connecting with Students



22



23




24

Alumni Ambassadors

- Alumni Weekend 2019
May 16th to May 18th
<https://drexel.edu/alumni/events/alumniweekend/>
- Alumni Campus Crawl
May 18th
- Drexel After Dark
Philadelphia Museum of Art
May 18th




25



Donna Maier
dmm454@drexel.edu
215.895.1639

Catherine Campbell-Perna
catherine@drexel.edu
215.895.6713
alumniamb@drexel.edu



26