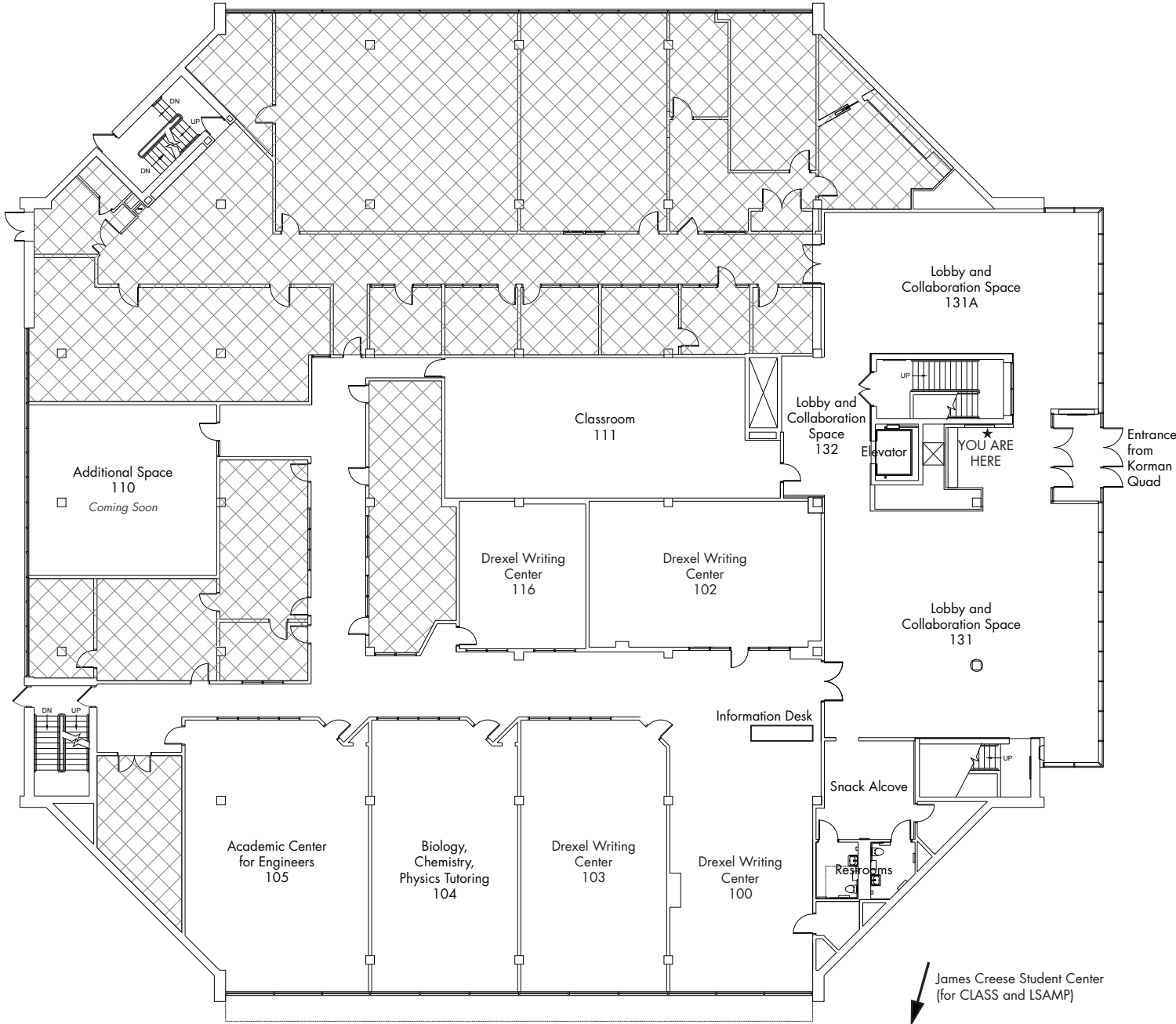
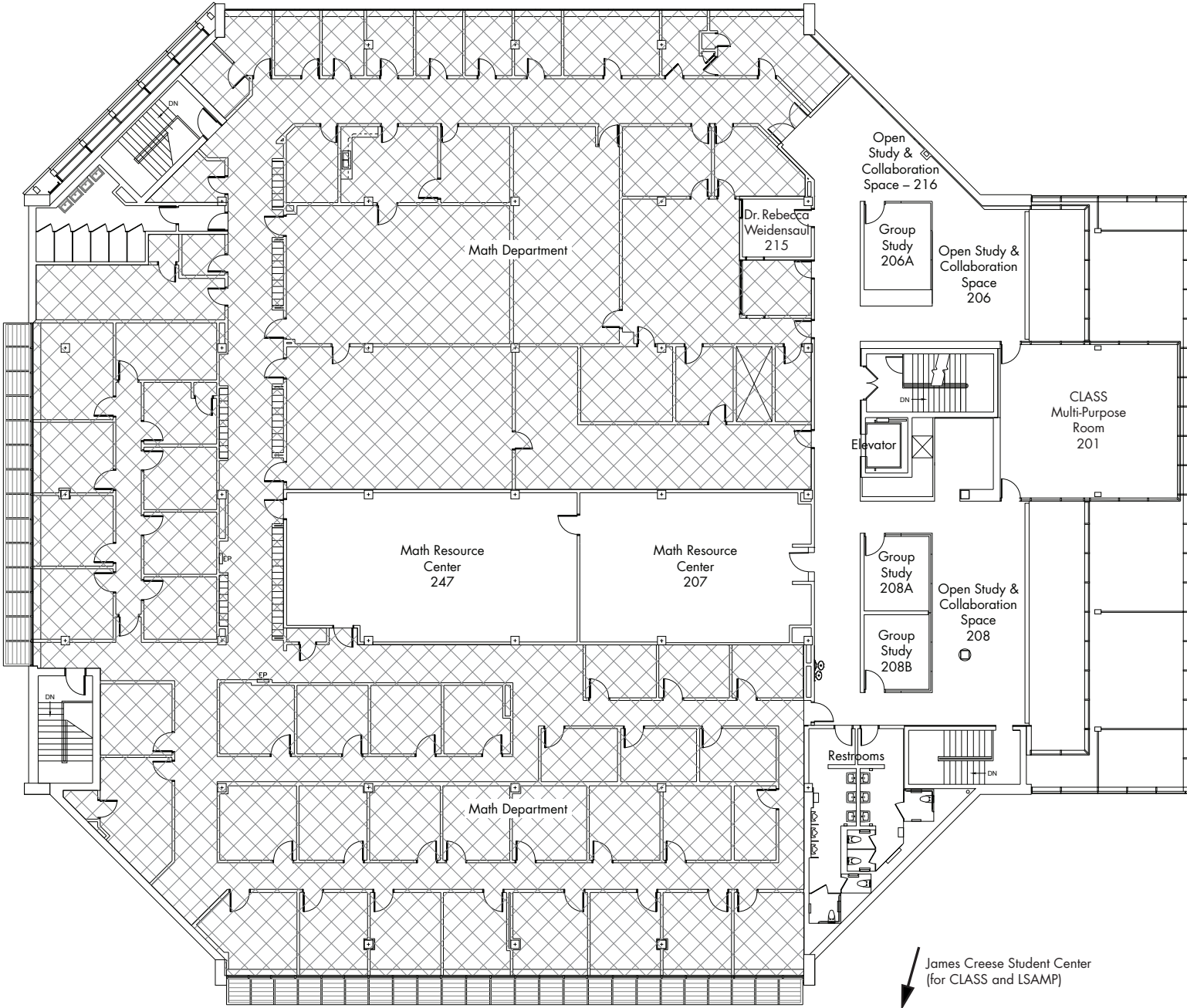


Drexel University – Academic Resource Center



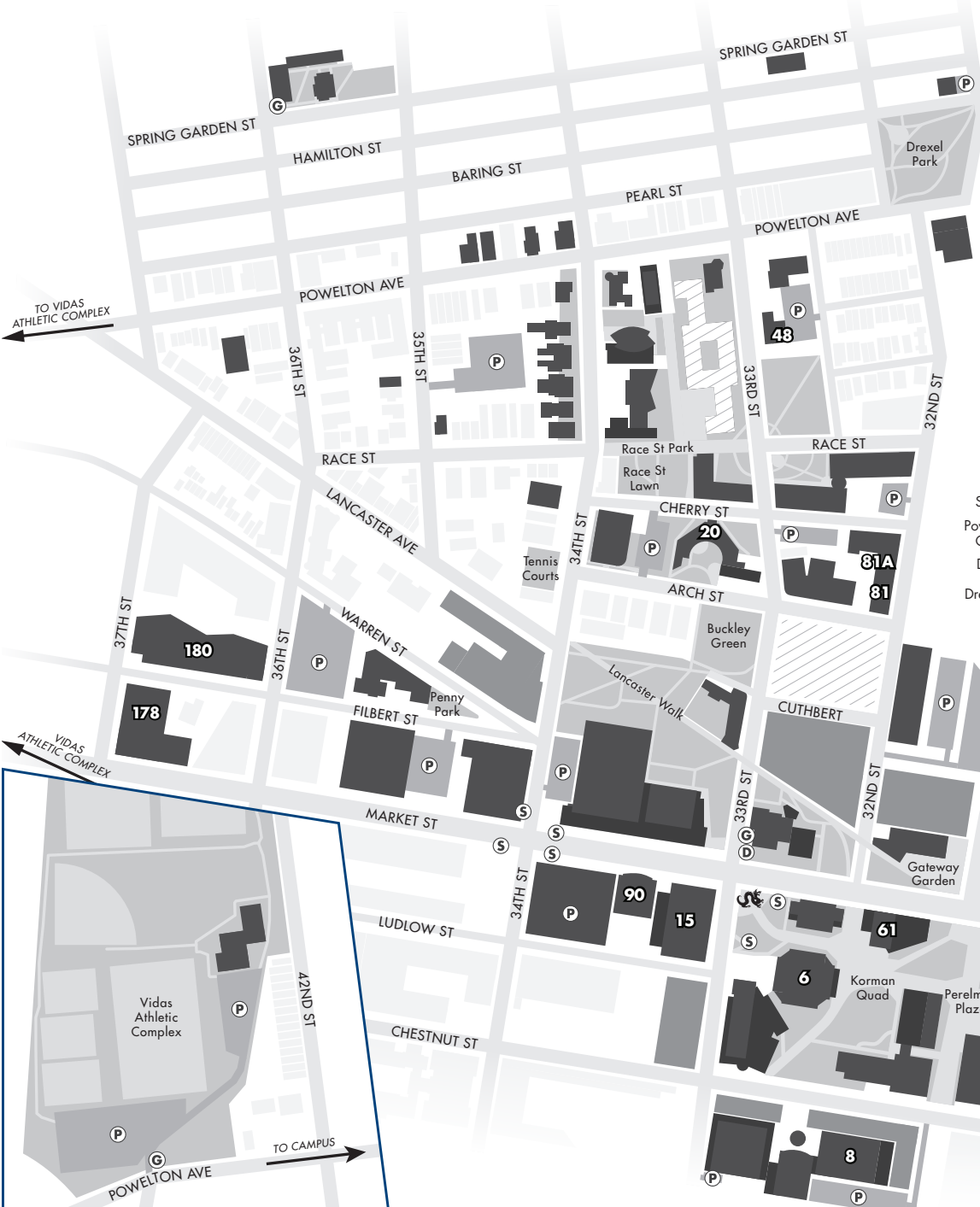
- Academic Center for Engineers 105
- Additional Space (Coming Soon) 110
- Biology Tutoring 104
- Chemistry Tutoring 104
- CLASS Multi-Purpose Room 201
- Classroom 111
- Dr. Rebecca Weidensaul 215
- Drexel Writing Center 100, 102, 103, 116
- Group Study 206A, 208A, 208B
- Information Desk 101
- Lobby and Collaboration Space . . . 131, 131A, 132
- Math Resource Center 207, 247
- Math Department 209 - 298
- Open Study & Collaboration Space . 206, 208, 216
- Physics Tutoring 104
- Restroom 100C, 100D, 200, 204
- Snack Alcove 100E

Drexel University – Academic Resource Center



- Academic Center for Engineers 105
- Additional Space (Coming Soon) 110
- Biology Tutoring 104
- Chemistry Tutoring 104
- CLASS Multi-Purpose Room 201
- Classroom 111
- Dr. Rebecca Weidensaul 215
- Drexel Writing Center 100, 102, 103, 116
- Group Study 206A, 208A, 208B
- Information Desk 101
- Lobby and Collaboration Space . . . 131, 131A, 132
- Math Resource Center 207, 247
- Math Department 209 - 298
- Open Study & Collaboration Space . 206, 208, 216
- Physics Tutoring 104
- Restroom 100C, 100D, 200, 204
- Snack Alcove 100E

Drexel University – Resources Around Campus



While most academic support services at Drexel can be found at the ARC in the Korman Center (Building 6), there are several other resources and offices around campus that can help you access the tools that best fit your individual needs. Use this map to help you navigate these resources – and stop by the ARC Help Desk in Korman if you'd like assistance figuring out where you can go next to get started.

| SERVICE | BUILDING |
|--|---------------------|
| Career Counseling | 81 – Suite 110 |
| Center for Learning and Academic Success Services | 8 – Suite 032 |
| Nursing, Public Health, and Biomedical Sciences Tutoring | |
| STEM Support | 8 – Suite 032 |
| Louis Stokes Alliance for Minority Participation Bridge to the Doctorate | |
| Disability Resources | 1 – Suite 228 |
| Center for Autism and Neurodiversity | 8 – Suite 048 |
| Drexel University Libraries | 15 |
| English Language Center | 48 |
| Cyber Learning Center | 178 – Room 1066 |
| Center for Inclusive Education and Scholarship | 8 – Suite 222 |
| Business Tutoring | 61 – Third floor |
| Undergraduate Research and Enrichment Programs | 20 – Second Floor |
| Graduate College | 1 – Suite 301 |
| Thomas R. Kline School of Law Academic Skills Program | 90 – Room 351 & 353 |
| College of Medicine Academic Support | 180 |