



Office of Research & Innovation Newsletter • June 2022

In this issue:

- A Note from the Executive Vice Provost for Research & Innovation
- News & Announcements
- Funding Opportunity Resources
- Events & Education
- Online Resources and Links



A Note on Research Development



Dear Colleagues,

Historic approaches to obtaining sponsored research awards include pursuing every opportunity, approaching each opportunity in the same way, and a "go it alone" single faculty member approach. As federal agencies continue to shift dollars toward **large and complex** opportunities that require multiple PIs from a variety of disciplines, the historic approaches to pursuing sponsored research are not productive.

This tide change began as far back as 1985 with programs like the National Science Foundation Engineering Research Centers that support convergent research, education, and technology that lead to strong societal impacts.

In 2014, the establishment of the National Network for Manufacturing Innovation, now known as Manufacturing USA, initiated by the President's Council of Advisors on Science and Technology brings together industry, academia, and federal partners within a grown network of advanced manufacturing

institutes to increase U.S. manufacturing competitiveness and promote a sustainable national research and development infrastructure. The interagency work team included the Advanced Manufacturing National Program Office, Department of Commerce, Department of Education, Department of Defense, Department of Energy, National Aeronautics and Space Administration, National Science Foundation, and the U.S. Department of Agriculture. Today, there are sixteen manufacturing innovation institutes that are public-private partnerships with a common goal to secure the future of U.S. manufacturing through innovation.

In 2021 led by the National Science Foundation, and in partnership with U.S. Department of Agriculture National Institute of Food and Agriculture, U.S. Department of Homeland Security, Amazon, Intel, and Accenture, funded eleven new National AI Research Institutes. More recently, the National Institute of Health issued a new solicitation in the Brain Initiative effort that requires team-research that bridges across institutional silos that promote diverse perspectives from fields such as computational biology, physics, engineering, mathematics, computer and data science, and bioethics.

These **large and complex** opportunities:

- require cross-disciplinary, cross-unit, cross-institutional, and/or cross-sector teams and coordination
- typically demand institutional cost-sharing and/or infrastructural investments
- occur inconsistently and often unpredictably because of longer award timeframes and changing funder priorities
- entail a more complicated budget exercise, as grants typically exceed \$1 million
- include significant education and outreach components that necessitate dedicated staff and community engagement expertise
- frequently limit the number of submissions allowed per institution

There are many benefits associated with **large and complex** federal awards:

- provides greater funding over longer timeframe
- paves the way to create innovative new disciplines, methods, and curriculum
- gains experience and credibility as responsible stewards of federal funds
- enhances reputation for the institution and researchers
- strengthens of relationships with federal agencies and partners
- increases institutional competitiveness for future awards

The Office of Research & Innovation is standing up a research development team to help position the institution to be more competitive for **large and complex** awards, and to adjust our existing resources to support the pursuit of large and complex awards. This includes refining institutional research strategy, developing research partners, adapting research services and resources, and supporting building research teams.

The framework for research development services consists of four tactical areas:

- use data and analytics to drive research strategy
- better position the institution with pre-RFP interventions
- tailor resources to support team development
- proposal development services to improve submission quality

Informed by the work of EAB's University Research Forum, this framework complements Drexel 2030 and the provost's priority to help drive the implementation of the strategic plan. In its pilot stage, this team will focus its efforts on areas of excellence and opportunity identified by university leadership with the goal of providing services that add value across the university and emphasize support for interdisciplinary research to help increase externally funded research at Drexel.

As we begin the journey to establish the Research Development unit within the Office of Research & Innovation, a small group of faculty and administrators participated in an initial retreat led by EAB that focused primarily on the first three tactical areas. We will be working over the summer to prepare to launch in the new academic year.

Questions? Email researchdevelopment@drexel.edu¹

Sincerely,

Gwynne Grasberger

Assistant Vice Provost, Research Development

and

Aleister Saunders, Ph.D.

Executive Vice Provost, Research & Innovation

Professor

¹<mailto:researchdevelopment@drexel.edu>

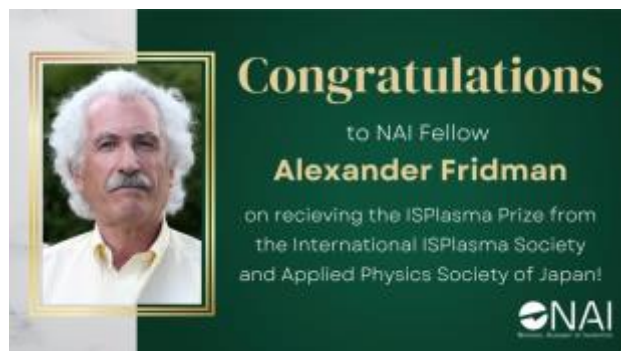
News and Announcements



The 2022 IPlasma Prize Goes to...

Congratulations to Alexander Fridman on being awarded the 2022 IPlasma Prize² from The International IPlasma and Applied Physics Society of Japan!

The ISPlasma Prize is the highest recognition awarded by the Organizing Committee of ISPlasma/IC-PLANTS for outstanding achievements in the field of Plasma Science and its Applications as well as great contribution towards the continued success of ISPlasma/IC-PLANTS.



²https://drexel.edu/nyheiminstitute/newsandevents/news/2022/April/The_ISPlasma_Prize_-_Fridman/

2021-22 Drexel Research, Scholarship and Creativity Awards & Provost Awards for Teaching, Scholarship, and Professional Service

As a means of supporting the ongoing development of our research, scholarship, and creative activities, as well as recognizing excellence in teaching and professional service, the Office of Research & Innovation and the Office of Faculty Advancement and Undergraduate Affairs are pleased to announce the recipients of the 2021-2022 Research, Scholarship and Creativity Awards and the 2021-2022 Provost Awards for Teaching, Scholarship and Professional Service. See full list of awardees here ³!



A Reminder on Research Integrity

As we approach the summer research months, the Office of Research & Innovation in partnership with the Graduate College, would like to provide reminders of our shared values and commitments to the responsible conduct of research.

The Responsible Conduct of Research (RCR) reminds us as researchers/scholars, trainees, mentors and mentees, we need to foster a research environment that is ethical, promotes and maintains integrity, encourages public confidence in science, is used to create progress for the public good and enables researchers of all levels to work together in a safe and welcoming environment. In addition to our annual course offerings on RCR⁴ and ORI led RCR workshops⁵, below are additional resources and trainings that will help promote and maintain scholarly integrity that our institution requires:

- Mentorship

As mentors and mentees, we have shared responsibilities in advancing scientific and scholarly inquiry. Here are some resources for mentors and mentees:

1. The Association of American Medical Colleges (AAMC) has published guidance on the Appropriate Treatment of Research Trainees⁶ (AToRT). Mentors and Mentees are encouraged to read the report and discuss the principles outlined to increased continued dialogue around building our research spaces together. Additionally, AAMC is hosting a webinar on AToRT July 18, 2022 which is open to all REGISTER HERE⁷
2. Guidebook for Teaching Selected Responsible Conduct of Research Topics to Diverse Groups⁸
3. The University offers membership to the National Center for Faculty Development and Diversity⁹ which offers a wide range of resources and training for mentors and mentees.

³<https://drexel.edu/provost/news-events/announcements/2022/May/faculty-awards/>

⁴<https://drexel.edu/graduatecollege/professional-development/rcr/>

⁵<mailto:researchintegrity@drexel.edu>

⁶https://www.aamc.org/media/56841/download?utm_source=sfmc&utm_medium=email&utm_campaign=greatgand&utm_content=newsletter

⁷<https://aamc-org.zoom.us/meeting/register/tJMkfu6rrDMsGNQ9hvD8AMoFnY6pr7rcDIYC>

⁸[https://ori.hhs.gov/images/ddblock/Alexander.RCR Guidebook.BW_.pdf](https://ori.hhs.gov/images/ddblock/Alexander.RCR%20Guidebook.BW_.pdf)

- Authorship

Authorship is the primary way that researchers are recognized for their contributions in a research project. Have authorship discussions early and often to ensure all contributors expectations are aligned. ORI provides authorship agreement templates as well as mediates the process for authorship disputes. Information can be found on our RCR Toolkit¹⁰.

- Data Management

Sound data management practices are not only encouraged but required by many of the federal funding agencies that require data management plans when submitting for a grant.

1. The University offers our community LabArchives¹¹ for both research and classroom training.
2. The University Libraries¹² offers data management resources for the research and student community.
3. NIH has issued a new Data Management and Sharing policy¹³ which goes into effect on January 25, 2023. NIH hosts regular Webinars and Training¹⁴ regarding data sharing

- Research Environment

Finally, we want to remind the members of our community that we are here to help you navigate not only the responsible conduct of research, but questions and issues that may arise centering research integrity, harassment and bullying, or even just general questions.

You may reach our teams at

Researchintegrity@drexel.edu¹⁵

URCF Research Showcase

The University Research Computing Facility (URCF) held a research showcase on May 25, 2022 that included a student poster competition, in-person and pre-recorded presentations from Drexel faculty and a workshop focused on getting started in high-performance computing. The URCF is home to Picotte, Drexel's high-performance scientific computing cluster and secure storage system. Picotte is the result of a combined \$1.2 million investment funded by both Drexel and the National Science Foundation's Major Research Instrumentation (MRI) program. Named in honor of Susan La Flesche Picotte, the first Native American to earn a medical degree and a Drexel alum, Picotte is housed in Drexel's state-of-the-art 1,600-sq.ft. data center.

Bryan Berman (CAEE) was awarded Best Poster for his presentation titled "Influence of HVAC systems on aerosol partitioning and chemical processing."

⁹<https://www.facultydiversity.org/dashboard>

¹⁰<https://drexel.edu/research/compliance/rcr/toolkit/>

¹¹<https://drexel.edu/research/resources/electronic-research-notebooks/>

¹²<https://libguides.library.drexel.edu/dataresources/dmp#s-lg-box-20345851>

¹³<https://grants.nih.gov/grants/guide/notice-files/NOT-OD-21-013.html>

¹⁴<https://datascience.nih.gov/nih-data-sharing-and-reuse-seminar-series>

¹⁵<mailto:Researchintegrity@drexel.edu>

Felix Agbavor (Biomed) received Runner Up for “Predicting dementia from spontaneous speech using large language models.”

Congratulations to Bryan and Felix on their awards and thank you to all who participated.



New NIH Data Management and Sharing Policy - Informational Webinar

NIH has unveiled this new policy that all NIH funded projects must abide by. The policy becomes effective January 25, 2023. The new policy requires Investigators to (i) submit a Data Management and Sharing plan outlining how scientific data and any accompanying metadata will be managed and shared, taking into account any potential restrictions or limitations; and (ii) Comply with the Data Management and Sharing plan approved by the funding Institute or Center (IC).

NIH is holding a webinar series this summer to explain the new policy. Use the link ¹⁶to sign up for alerts about this webinar.

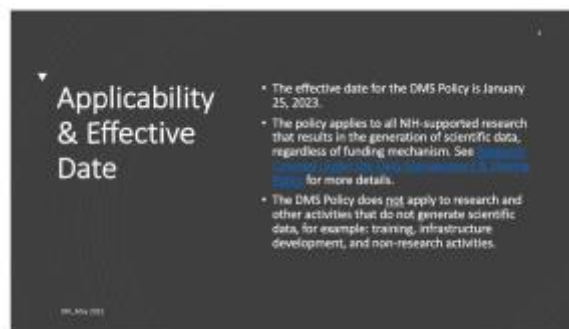
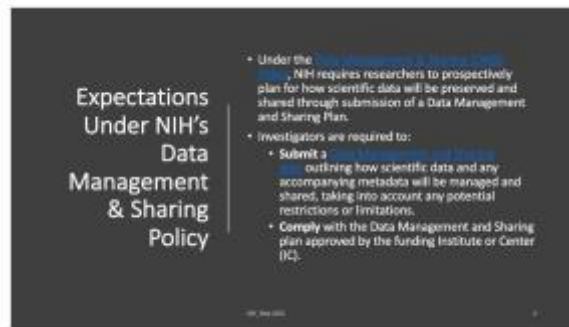
1 - NIH.gov¹⁷

Overview of New NIH Data Management and Sharing Policy

Learn more about the New NIH Policy with this brief slide presentation¹⁸ that contains hyperlinks to relevant NIH documents/sites and existing Drexel resources to support data management and sharing. Use this link ¹⁹to access hyperlinks in the slides.

¹⁶<https://sharing.nih.gov/about/learning/DMS-Update>

¹⁷<https://sharing.nih.gov/about/learning/DMS-Update>



¹⁸[https://drexel0-my.sharepoint.com/personal/cng45_drexel_edu/Documents/Apps/Microsoft Forms/Newsletter Submission-March 2022 \(Copy\)/Upload Any Related Images or Documents/NIH Data Management and Sharing Policy Overvi_Aleister Saunders.pdf](https://drexel0-my.sharepoint.com/personal/cng45_drexel_edu/Documents/Apps/Microsoft%20Forms/Newsletter%20Submission-March%202022%20(Copy)/Upload%20Any%20Related%20Images%20or%20Documents/NIH%20Data%20Management%20and%20Sharing%20Policy%20Overvi_Aleister%20Saunders.pdf)

¹⁹[https://drexel0-my.sharepoint.com/personal/cng45_drexel_edu/Documents/Apps/Microsoft Forms/Newsletter Submission-March 2022 \(Copy\)/Upload Any Related Images or Documents/NIH Data Management and Sharing Policy Overvi_Aleister Saunders.pdf](https://drexel0-my.sharepoint.com/personal/cng45_drexel_edu/Documents/Apps/Microsoft%20Forms/Newsletter%20Submission-March%202022%20(Copy)/Upload%20Any%20Related%20Images%20or%20Documents/NIH%20Data%20Management%20and%20Sharing%20Policy%20Overvi_Aleister%20Saunders.pdf)

Research Covered by the 2023 Data Management & Sharing Policy

- Applies to **all research, funded or conducted in whole or in part by NIH**, that results in the generation of **scientific data**.
 - **Scientific Data** is defined as data commonly accepted in the scientific community as of sufficient quality to validate and replicate research findings, regardless of whether the data are used to support scholarly publications.
 - **Scientific data includes** any data needed to validate and evaluate research findings.
 - **Scientific data does not include** laboratory notebooks, preliminary analyses, completed user reports for use, drafts of scientific papers, plans for future research, peer reviews, communications with colleagues, or physical objects such as laboratory specimens.
- This includes all NIH-supported research regardless of funding level, including:
 - Extramural (grants)
 - Extramural (contracts)
 - Intramural research projects
 - Other funding agreements
- The DMS Policy does not apply to research and other activities that do not generate scientific data, for example training, infrastructure development, and non-research activities.

19, June 2023

2

Foreign Collaboration

- Policies related to data sharing vary across countries.
- Investigators from foreign institutions and U.S. investigators collecting data in other countries should familiarize themselves with the policies governing data sharing in the countries in which they plan to work and to address any specific limitations in the plan in their application.
- For more information, view this [video](#).

19, June 2023

3

Compliance

- During a research project's funding period, compliance with the DMS plan will be determined by the NIH Institute or Center. After the end of the funding period, non-compliance with the DMS plan may be taken into account by NIH for future funding decisions for the recipient institution.
- Generating large-scale genomic data? NIH's Genomic Data Sharing (GDS) policy may also apply to your research. See our [GDS page](#) to learn more.

19, June 2023

4

Learn more- Sign up for NIH Webinars

A Conversation with NIH:
Implementation of the New Data Management and Sharing Policy

SWE THE DATA:
2. PART WEBINAR
Coming Summer 2023

NIH | <https://nlb.grants.nih.gov/?r=424684m1V23XXX065527>

19, June 2023

5

Existing University Libraries Resources

- Libraries staff provide guidance for OncoRx University researchers, faculty, staff and students in the following areas:
 - Data Management Plans (DMPs)
 - [DMP Hub](#)
 - [Data Management](#)
 - [Data Management and Compliance](#)
 - [Research Data Management and Compliance](#)

19, June 2023

NSF establishes new Directorate for Technology, Innovation and Partnerships (TIPs)

NSF Director Sethuraman Panchanathan announced in mid-March a new directorate within the U.S. National Science Foundation focused on Technology, Innovation and Partnerships, or TIP, during his session on Reinvigorating Science and Technology for the Future of U.S. Innovation. This new directorate — NSF's first in more than 30 years — builds upon the agency's commitment over seven decades to serve as a beacon of U.S. innovation, advancing the frontiers of research and education across all fields of science and engineering. TIP is a critical first step that will accelerate the development of new technologies and products that improve Americans' way of life, grow the economy and create new jobs, and strengthen and sustain U.S. competitiveness for decades to come. Read here²⁰.



NIH gains new power to police sexual harassment

NIH calls the policy a “major step” to close loopholes that have allowed institutions to hide harassment cases from the agency. “There’s no question that we’re going to be hearing about cases that we either would not have heard about at all, or only after a substantial delay,” says NIH Deputy Director for Extramural Research Michael Auer. Observers welcome the law, but they note that NIH’s reporting requirements still fall short of those at the National Science Foundation (NSF). That could leave the agency in the dark about some ongoing investigations. See full article here²¹.



²⁰https://www.nsf.gov/news/news_summ.jsp?cntn_id=304624

²¹<https://www.science.org/content/article/nih-gains-new-power-police-sexual-harassment>

2023 AAAS Awards & Prizes- Honoring Excellence in Science

Nominations are now open for nine of AAAS' awards that honor scientists, engineers, innovators, public servants and authors for their contributions to science and society.

The following awards are accepting nominations between April 15 and June 30, 2022:

AAAS David and Betty Hamburg Award for Science Diplomacy

AAAS Award for Scientific Freedom and Responsibility

AAAS Early Career Award for Public Engagement with Science

AAAS Mani L. Bhaumik Award for Public Engagement with Science

AAAS Mentor Award AAAS Lifetime Mentor Award AAAS Newcomb Cleveland Prize

AAAS Philip Hauge Abelson Prize

Nominations for the AAAS/Subaru SB&F Prize for Excellence in Science Books will be open between April 15 and July 8. Visit site²² for more details.



Awards for Early-Career Scientists- Science Magazine

Science magazine sponsors a number of different awards for early career scientists/investigators. If you are <35 years old explore these options²³. Deadlines are this summer and fall.

²²<https://www.aaas.org/aaas-awards>

²³<https://www.science.org/content/page/prizes-and-awards>



Office of Sponsored Programs



In an effort to increase communication regarding ORI policies, check this section monthly for highlighted changes or friendly reminders regarding policy.

Proposal Submission Timeline Reminder

In 2015, the Office of Research & Innovation adopted a proposal submission timeline policy to ensure appropriate institutional review of all outgoing research proposals.

The policy is available at: <https://drexel.edu/research/submission/deadlines/>

Submission of proposals in this timeline allows:

- sufficient time for proposal preparation and routing
- review of institutional risk and compliance reviews
- corrections and institutional approvals.

- ensures that OSP is not inundated with multiple last-minute proposal reviews and allows for advance workload planning

Last-minute proposal reviews and submissions increase the likelihood of mistakes, misunderstandings, non-compliant proposals, and – worst case – late submissions.

Where there are multiple submissions due on the same day, OSP’s practice is to work on proposals under the proposal submission timeline policy, and to work on the rest of the out-of-policy submissions in the order that they are received.

We appreciate the major investment that faculty and their teams make in preparing proposals. OSP’s goal is to ensure that 100% of proposals are compliant with sponsor requirements and submitted in a timely manner. We thank you in advance for helping us meet that goal.

Please reach out to your grants program administrator²⁴ with questions.

Funding Opportunity Resources



Funding search tools:

Pivot-RP²⁵

Funding Institutional²⁶

²⁴<https://drexel.edu/research/about/find-program-administrator/>

²⁵https://pivot-proquest-com.ezproxy2.library.drexel.edu/funding_main

Limited Submissions and Intramural Funding Portal²⁷

For access and the best user experience, sign in with your Drexel credentials and use Drexel VPN when not on campus.

Questions? Email researchdevelopment@drexel.edu²⁸

Fulbright-Hays Faculty Research Abroad Fellowship Program

The Office of Global Engagement is seeking faculty applicants who are interested in applying for the Fulbright-Hays Faculty Research Abroad Fellowship Program. The Fulbright-Hays FRA Program provides fellowships through institutions of higher education (IHEs) to faculty members who propose to conduct research abroad in modern foreign languages and area studies to improve their skill in languages and their knowledge of the culture of the people of these countries. Projects should seek to advance scholarly research in the applicant's area of research as well as their language acquisition. To be eligible for the FRA, applicants must meet the absolute priority - **a research project that focuses on one or more of the following geographic areas: Africa, East Asia, Southeast Asia and the Pacific Islands, South Asia, the Near East, Central and Eastern Europe and Eurasia, and the Western Hemisphere (excluding the United States and its territories).**

Guidelines for application materials are attached. **Faculty who would like to submit a proposal as part of the Drexel package should email Adam Zahn, Director, Global Engagement (alz26@drexel.edu)²⁹ who is managing the process of submitting to the G5 portal. by June 3, 2022, Deadline to submit application materials internally is July 1, 2022.**

Funds support: travel expenses to and from the residence of the fellow and the country or countries of research, a maintenance stipend for the fellow related to their academic year salary, and an allowance for research-related expenses overseas such as books and photocopying, tuition, affiliation fees, local travel, and other incidental expenses.

Eligible Applicants: Institutions of higher education (IHEs) in the United States are eligible to apply for grants under this program. As part of the application process, **eligible faculty submit their individual research narratives and application forms to their home IHE.** The IHE compiles all eligible individual applications for inclusion in the institutional application that is submitted to the U.S. Department of Education.

In addition to the absolute priority that research projects must focus on one or more of the geographic areas mentioned under program features, for FY 2022, the FRA program has the following competitive preference priorities:

²⁶<https://nam10.safelinks.protection.outlook.com/?url=https%3A%2F%2Fwww.fundinginstitutional.com%2F&data=04|01|cng45%40drexel.edu|62890f12584f43d7561f08d96ca3ee21|3664e6fa47bd45a696708c4f080f8ca6|0|0|637660273588061669|Unknown|TWfPbGZsb3d8eyJWljoimC4wLjAwMDAiLCJQIjoiv2luMzliLCJBTiI6lk1haWwiLCJXVCi6Mn0%3D|1000&sdata=7D1NvmHylYoNp%2F4vyq96CU%2B7oLp7KIHBTRwdsK6zkzo%3D&reserved=0>

²⁷<https://nam10.safelinks.protection.outlook.com/?url=https%3A%2F%2Fdrexel.infoready4.com%2F&data=04|01|cng45%40drexel.edu|62890f12584f43d7561f08d96ca3ee21|3664e6fa47bd45a696708c4f080f8ca6|0|0|637660273588071628|Unknown|TWfPbGZsb3d8eyJWljoimC4wLjAwMDAiLCJQIjoiv2luMzliLCJBTiI6lk1haWwiLCJXVCi6Mn0%3D|1000&sdata=aOPZwQl1dD6WjFZMwm2YtF8OHotPQM7I8QhHbtWYb4%3D&reserved=0>

²⁸<mailto:researchdevelopment@drexel.edu>

²⁹<mailto:alz26@drexel.edu>

1.) Competitive Preference Priority 1— Focus on Less Commonly Taught Languages (1 point) 2.) Competitive Preference Priority 2— Thematic Focus on Academic Fields -Applications that propose research projects in modern foreign languages and area studies with an academic focus on any of the following academic fields: Science (including climate change), technology, engineering (including infrastructure studies), mathematics, computer science, education (comparative or international), international development, political science, public health (including epidemiology), or economics (2 points) 3.) Competitive Preference Priority 3— Promoting Equity in Student Access to Educational Resources and Opportunities (2 points) Projects implemented by one of the following entities:

- Historically Black colleges and universities
- Minority-serving institutions; or
- Tribal colleges and universities

2022-2023 Teck-Kah Lim Graduate Student Domestic Travel Subsidy Award Application

Summary:

The Graduate College and Graduate Student Association³⁰ offer a limited number of Teck-Kah Lim Graduate Student Domestic Travel Subsidy Awards annually to encourage graduate student presentation at academic meetings and conferences held within the United States and territories (including Puerto Rico)* *and/or* for virtual presentation. These opportunities not only strengthen the academic and professional skills of our student presenters, preparing them to be leaders in their fields, but also increase the awareness of the exceptional graduate student research happening at Drexel.

Please note that this application is for travel between July 1, 2022 and June 30, 2023.

Click here ³¹for more details!

Deadline: 6/30/2022

NIH PAR-20-103: Collaborative Program Grant for Multidisciplinary Teams (RM1 - Clinical Trial Optional)

Summary:

This funding opportunity announcement (FOA) is designed to support highly integrated research teams of three to six PD/PIs to address ambitious and challenging research questions that are important for the mission of NIGMS and are beyond the scope of one or two investigators. Collaborative program teams are expected to accomplish goals that require considerable synergy and managed team interactions. Project goals should not be achievable with a collection of individual efforts or projects. Teams are encouraged to consider far-reaching objectives that will produce major advances in their fields. Applications that are mainly focused on the creation, expansion, and/or maintenance of community resources, creation of new technologies or infrastructure development are not appropriate for this FOA. This FOA is being reissued to allow submission of applications that include NIH defined clinical trials. NIGMS will not accept clinical trials that are designed to test safety and efficacy of interventions (Phase I,

³⁰<https://drexel.edu/graduatecollege/resources/graduate-student-association/>

³¹<https://drexel.edu/graduatecollege/research-funding/travelsubsidy/>

Phase II, Phase III) for the purpose of future clinical treatment and/or regulatory approval in response to this FOA.

Click here for more details: <https://drexel.infoready4.com/#competitionDetail/1849414>

Deadline: 7/27/2022

Proposal Development Tip

Do you need to secure an institutional letter of support or commitment for your proposal submission?

Institutional letters of support are sometimes required by funding agencies as evidence of institutional commitment. To learn more about the process, visit Prepare³² on the Office of Research & Innovation website. Questions? Email researchdevelopment@drexel.edu³³

Events and Education



Philadelphia Flower Show 2022: Volunteers requested

The 2022 Philadelphia Flower Show will be held **June 11th thru the 18th**. Volunteering at the Philadelphia Flower Show is a fun way to support PHS and your community! Whether it's greeting guests upon arrival, or ensuring guests have the information they need to make the most of their Show experience, PHS volunteers have always played an important role in the Philadelphia Flower Show. No previous experience is necessary – they will give you the training you need.

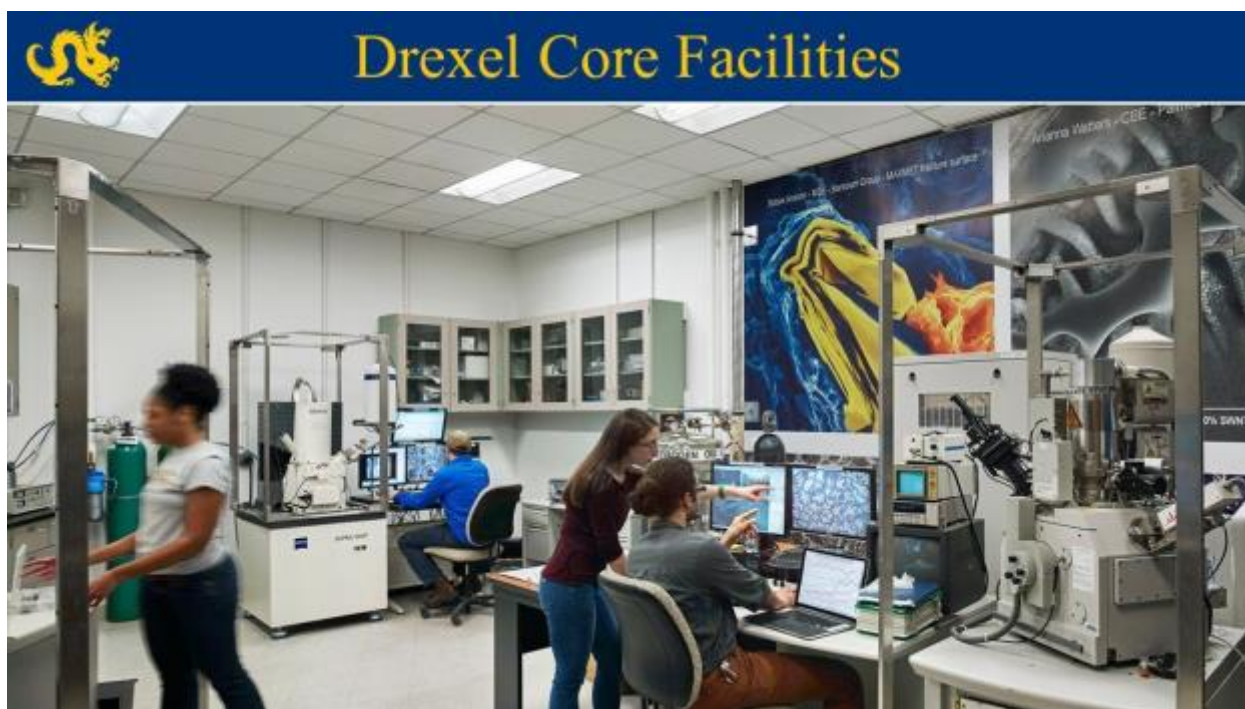
³²<https://drexel.edu/research/proposal/prepare/letter-of-support/>

³³<mailto:researchdevelopment@drexel.edu>

BEAD is hoping to come together to support the Philadelphia Flower Show as a group. One of our board members, Sierra will be volunteering from 2pm-5pm on Monday, June 13th as an access ambassador. If you are interested, you can sign up independently on the PHS website. There are several volunteer opportunities to choose from. Click here ³⁴ to sign up and for more details.



Online Resources and Links



-
- *Office of Research & Innovation* ³⁵
 - *Find Your Pre-Award Program Administrator* ³⁶
 - *Resources and Forms* ³⁷

³⁴<https://phsonline.org/the-flower-show/participate/volunteer>

³⁵<https://drexel.edu/research>

³⁶<https://drexel.edu/research/about/find-program-administrator/>

- [Response to the COVID-19 Pandemic and Research Ramp-Up Guidance](#)³⁸
 - [Contact members of the Office of Research & Innovation](#)³⁹
-

Contact Us



We want to hear from YOU! Let us know what you like (or don't like) about our newsletter and which research administration topics you'd like to learn more about. All feedback is welcome. Contact Us ⁴⁰.

To locate a resource contact in the Office of Research & Innovation visit this page⁴¹.

Office of Research & Innovation | 1505 Race Street | Philadelphia, PA 19102 | drexel.edu/research⁴²

This message was sent to all Faculty and Staff, as well as Drexel Graduate students, via Drexel Announcement Mail and has been approved by Aleister J. Saunders, PhD, Executive Vice Provost for Research and Innovation.

³⁷<https://drexel.edu/research/resources/documents-and-forms/>

³⁸<https://drexel.edu/research/resources/response-to-covid-19-pandemic/>

³⁹<https://drexel.edu/research/about/contact/>

⁴⁰<mailto:crystal.n.gatling@drexel.edu>

⁴¹<https://drexel.edu/research/about/contact/>

⁴²<https://drexel.edu/research>