

INTRODUCING THE

# T-MOBILE® ADVANTAGE™



un-leash

Drexel University! Break up with your carrier and get **up to \$650 per line** for 5 lines. That's right! You can get a trade-in credit of **up to \$300** for your used working devices and reimburse **up to \$350** for your Early Termination Fees per line, once you send in your final bill.


## T-Mobile's Exclusive Discount program the best value in wireless:

- **15% off monthly rate plans for every line on the account.**
- **25% off Accessories**
- No annual service contracts, No Activation Fees and No Overages
- Early Termination Fees reimbursed, to free you from your current service contracts!
- With T-Mobile unRadio, customers can now stream popular music services without it counting against their data bucket.
- Risk-free 20-Day return policy
- Free Shipping with new activations
- Phone upgrades whenever you want with JUMP!
- Smartphone Mobile HotSpot included on all plans
- 200 MB of data free for life on all T-Mobile connected tablets, add a tablet to your Simple Choice voice plan and give it as much 4G LTE data as your smartphone gets.
- T-Mobile offers Free International Data & Texts – T-Mobile eliminates international roaming rates for data and text messages and simplifies calling rates. Available in 130+ countries covering 95% of all roaming traffic.

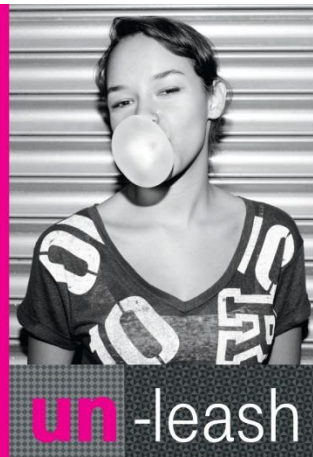
**\*\*Offers not available in store, Exclusive offers are only available on the [dedicated Drexel University Advantage Portal http://goo.gl/E4LqVn](http://goo.gl/E4LqVn) or by calling (866) 464-8662 with promo code: 1823TMOFAV\*\***

## T-Mobile's Simple Choice Plan

Our plans give you unlimited talk, text, and web, so there are no overages while on our network and no annual service contract. You'll also get unlimited global data coverage and texts in 120+ countries- all included in your Simple Choice plan for no extra charge.

Your price after discount.	First line	ADD MORE HIGH-SPEED DATA			NEED MORE LINES?  Add a second line Starting at <b>\$25<sup>50</sup></b> per month Add additional lines Starting at <b>\$8<sup>50</sup></b> per month 5-line maximum
	<b>\$42<sup>50</sup></b> per month	<b>+\$8<sup>50</sup></b> per line /mo.	<b>+\$17<sup>00</sup></b> per line /mo.	<b>+\$25<sup>50</sup></b> per line /mo.	
Talk + Text + Data	Unlimited	Unlimited	Unlimited	Unlimited	
4G LTE Data + Tethering*	Up to 1 GB	Up to 3 GB	Up to 5 GB	Unlimited	
Global Data + Text	Unlimited in 120+ Countries and Destinations				
Stateside International Texting	Unlimited				

# SWITCH TODAY AND WE'LL PAY YOUR EARLY TERMINATION FEES.



## To take advantage of the ETF reimbursement offer:

- Purchase your device online through the Advantage Order Portal or by calling Advantage Direct™ at 1-866-464-8662. Port-in is required.
- Within seven days after receiving your new device, go to [www.t-mobile.com/DeviceRecovery/cell-phone-trade-in.aspx](http://www.t-mobile.com/DeviceRecovery/cell-phone-trade-in.aspx) to complete the trade-in process. Print out the free postage-paid shipping label and mail in your old device. The trade-in value of your old device (up to \$300 per device) will be credited to your monthly bill (within three billing statements).
- As soon as you receive your old carrier's final bill showing your early termination fees, log on to [www.switch2tmobile.com](http://www.switch2tmobile.com) and submit it to us electronically for reimbursement. T-Mobile will send a prepaid MasterCard card within eight weeks covering the eligible ETF amount (up to a maximum of \$350 per line). Note: This must be completed within two calendar months from service activation.

## Eligibility

- You must trade in one device per Early Termination Fee (ETF) reimbursement.
- You must purchase a new device with Equipment Installment Plan (EIP) or pay full price.
- You must port your number from another carrier to a Simple Choice plan for each device.
- All lines must be activated in the same T-Mobile market with the same billing address and area code.

## Here's how you sign up and switch:



Call 1-866-464-8662 and use code: **1823TMOFAV**



Visit your [dedicated Advantage Program Website](#) or visit: <http://goo.gl/E4LqVn> (case sensitive)

**\*\*Offers not available in store, Exclusive offers are only available on the [dedicated Drexel University Advantage Portal](#) <http://goo.gl/E4LqVn> or by calling (866) 464-8662 with promo code: 1823TMOFAV\*\***

## Frequent Asked Questions

- As a **T-Mobile® Advantage™ Program participant**, you will receive a \$25 T-Mobile Advantage Reward Card every time you purchase a new device or tablet. Visit [www.t-mobile.com/advantagerewards](http://www.t-mobile.com/advantagerewards) to sign up.
- **General Questions or Upgrades:** Call Customer Care: (800)937-8997 or Find the nearest T-Mobile Retail store: <http://locator.t-mobile.com>
- **Refer a Friend:** Don't forget you can refer a friend and earn up to \$250! Refer your friend or co-worker to T-Mobile and you can both earn T-Mobile gift cards...up to \$250 a year. That's some serious scratch! Go to <https://referral.t-mobile.com/> to sign up.

If you have any questions feel free to call or write anytime.

**Brian Greene | Senior, Advantage Program Account Manager**

**1265 Drummers Lane, Suite 206 | Wayne, PA 19087 or 401 9th St. NW, Suite 550 | Washington, DC 20004**

**Mobile (610)653-8902 | Email [brian.greene2@t-mobile.com](mailto:brian.greene2@t-mobile.com) | Linked In: <http://www.linkedin.com/in/brianjgreene>**

Limited-time offer; subject to change. Taxes and fees additional. Not all features available on all devices. Eligible device trade-in, new device purchase, qualifying credit, port-in from eligible carriers (incl. AT&T, Verizon, and Sprint), and qualifying postpaid service required. Payments consist of: (1) credit of device trade-in value, and (2) prepaid MasterCard card in amount of Early Termination Fee. Tax on ETF not included. You must submit final bill showing ETF within 2 calendar months of port-in and be active and in good standing with T-Mobile when payment is processed; allow up to 8 weeks. Additional validation may be required. Up to 5 lines; all lines must be activated in same T-Mobile market with same billing address. One reimbursement per subscriber. Check your contract with your carrier for your rights and obligations. MasterCard card is reimbursement on new device, service, or port-in; for any tax implications of payment, consult a tax advisor. **General Terms:** Online or by calling Advantage Direct only. Credit approval, deposit, qualifying service, and \$10 SIM starter kit may be required. T-Mobile and the magenta color are registered trademarks of Deutsche Telekom AG. ©2014 T-Mobile USA, Inc.